

## Manuals+

[Q & A](#) | [Deep Search](#) | [Upload](#)

[manuals.plus](#) /

- › [Hurom](#) /
- › [Hurom H200 Renewed Easy Clean Slow Juicer Instruction Manual](#)

**Hurom H-200-WBBA03**

# Hurom H200 Easy Clean Slow Juicer Instruction Manual

Model: H-200-WBBA03

## 1. INTRODUCTION

---

This manual provides essential information for the safe and efficient operation, maintenance, and troubleshooting of your Hurom H200 Easy Clean Slow Juicer. Please read this manual thoroughly before using the appliance and retain it for future reference.





Image: The Hurom H200 Easy Clean Slow Juicer in white, showcasing its sleek design and compact form factor.

The Hurom H200 is designed to extract juice from various fruits, vegetables, nuts, and seeds using a slow-squeeze technology. This method minimizes oxidation, preserving nutrients and flavor for a higher quality juice.

## 2. IMPORTANT SAFETY INFORMATION

---

To reduce the risk of fire, electric shock, or injury, basic safety precautions should always be followed, including the following:

- Read all instructions before using the appliance.
- Do not immerse the motor base in water or other liquids.
- Ensure the appliance is properly assembled before operation. The juicer will not operate if components are not correctly aligned.
- Keep hands and utensils away from moving parts during operation to prevent injury.
- Always unplug the juicer from the power outlet when not in use, before assembling or disassembling parts, and

before cleaning.

- Do not operate any appliance with a damaged cord or plug, or after the appliance malfunctions or has been dropped or damaged in any manner.
- This appliance is for household use only. Do not use outdoors.
- Do not allow the cord to hang over the edge of a table or counter, or touch hot surfaces.
- Do not place on or near a hot gas or electric burner, or in a heated oven.
- Always ensure the power switch is in the "OFF" position before plugging or unplugging the unit.
- The juicer is equipped with a quiet motor, but it is still important to operate it in a stable environment.
- The product is 100% BPA free.

### 3. PRODUCT OVERVIEW AND COMPONENTS

---

Familiarize yourself with the main components of your Hurom H200 Slow Juicer:



Image: A detailed diagram labeling the key parts of the Hurom H200 Slow Juicer, including the Self-Feeding Hopper, On/Off Switch, Easy Clean Chamber, Juice Spout, Pulp Outlet, Built-In Pulp Container, and BPA-Free, Impact-Resistant ABS Plastic construction.

- **Self-Feeding Hopper:** Designed to accommodate whole-sized fruits and vegetables, reducing prep time.
- **On/Off Switch:** Controls the power to the unit.
- **Easy Clean Chamber:** The main juicing chamber, designed for simplified cleaning.
- **Juice Spout:** Where the extracted juice is dispensed.
- **Pulp Outlet:** Where the dry pulp is expelled.
- **Built-In Pulp Container:** Collects the expelled pulp.
- **Motor Base:** Contains the quiet 150-watt motor.
- **Auger:** The slow-squeezing mechanism that presses produce.
- **Strainer:** Filters the juice from the pulp. The H200 features grooves instead of holes for easier cleaning.

## 4. SETUP AND ASSEMBLY

Assembling your Hurom H200 is designed to be straightforward. Ensure all parts are clean before first use.




		
<p><input checked="" type="checkbox"/> <b>Easy to Assemble</b></p> <p>Takes only seconds to put together with minimal parts.</p>	<p><input checked="" type="checkbox"/> <b>Easy to Use</b></p> <p>Self-feeding hopper allows you to multi-task.</p>	<p><input checked="" type="checkbox"/> <b>Easy to Clean</b></p> <p>Rinse detachable parts without the need for scrubbing.</p>

Image: A composite image demonstrating the easy assembly of the juicer's components, the self-feeding hopper in use with whole fruits, and the simple rinsing process for cleaning.

1. Place the motor base on a stable, flat surface.
2. Insert the inner spinning brush into the chamber.
3. Place the strainer (fine or coarse, depending on desired pulp level) into the chamber, aligning it correctly.
4. Insert the auger into the center of the strainer.
5. Attach the hopper assembly to the top of the chamber, ensuring it clicks securely into place. The unit will not operate if the hopper is not properly seated.
6. Position the juice cup under the juice spout and the pulp container under the pulp outlet.
7. Plug the power cord into a grounded electrical outlet.

## 5. OPERATING INSTRUCTIONS



The Hurom H200 is designed for hands-free juicing with minimal prep.



Image: The Hurom H200 juicer in a kitchen setting, surrounded by fresh produce like pomegranates, apples, beets, pears, grapes, and tomatoes, alongside suggested juice recipes.

### 1. Preparation:

- Wash all fruits and vegetables thoroughly.
- For most produce, pre-cutting is not required due to the large self-feeding hopper. However, very fibrous ingredients (e.g., celery, ginger) may benefit from being cut into smaller pieces to prevent clogging.
- Remove hard pits from fruits (e.g., peaches, plums) and large seeds (e.g., apples) before juicing.
- Peel citrus fruits before juicing.

### 2. Juicing:

- Turn the juicer ON using the On/Off switch.
- Place prepared produce into the self-feeding hopper. The auger will automatically draw the produce down.
- Allow the juicer to process the ingredients at its slow speed. Do not force large quantities of produce into the hopper at once.
- The juice will flow from the juice spout into your collection cup, and the pulp will be expelled into the pulp container.
- For optimal juice extraction, alternate between soft and hard ingredients.

### 3. After Juicing:

- Once all ingredients are processed, allow the juicer to run for a few more seconds to ensure all juice is extracted.
- Turn the juicer OFF and unplug it from the power outlet.

The juicing chamber is designed with a 7-degree tilt to facilitate smooth juice flow and minimize residue, ensuring optimal delivery without mess.



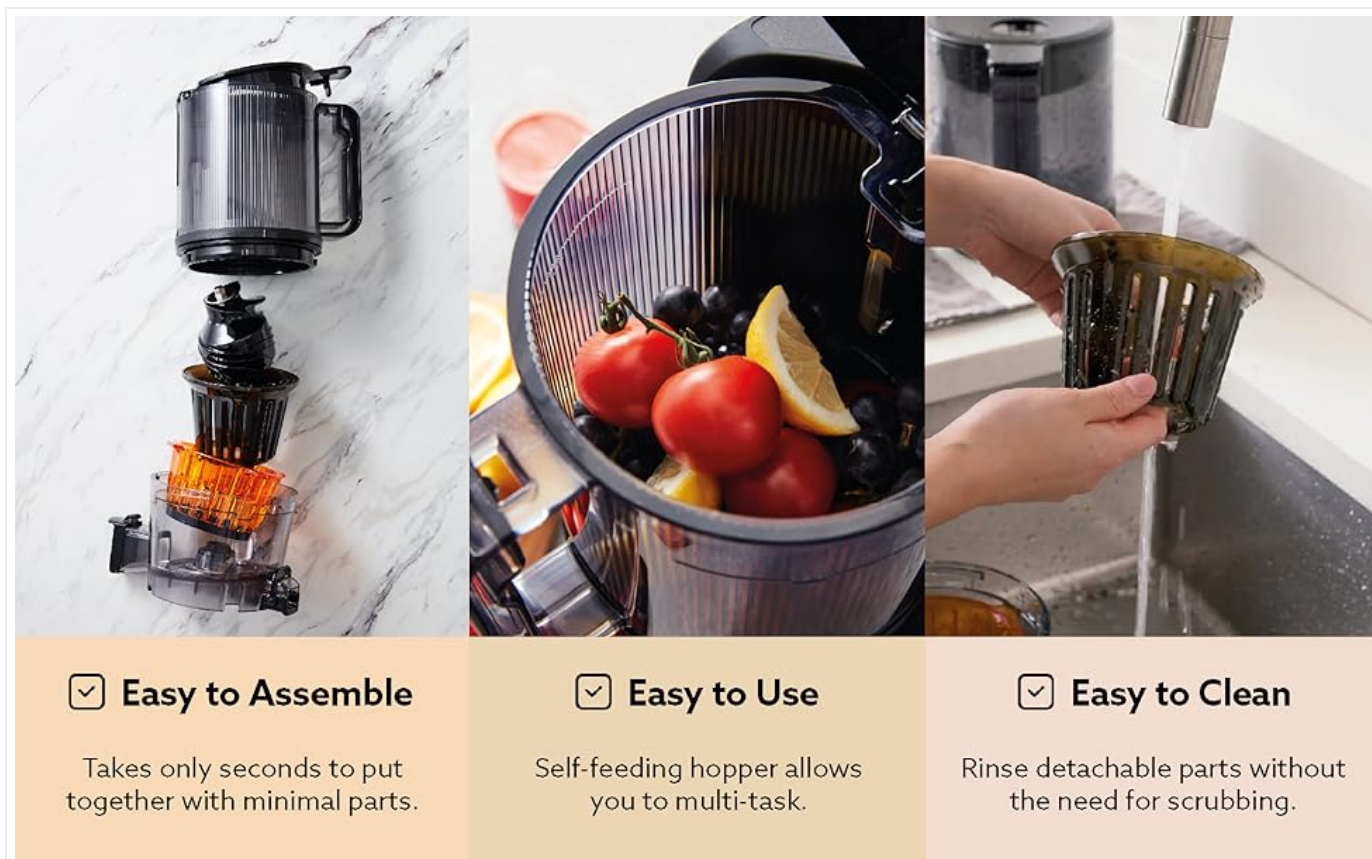
## Optimal Delivery

The chamber is tilted at 7 degrees so that the juice will slide right out without making a mess.

Image: A close-up view of the Hurom H200 juicer's chamber, highlighting its 7-degree tilt designed to ensure all juice slides out easily.

## 6. MAINTENANCE AND CLEANING

Regular cleaning ensures the longevity and optimal performance of your Hurom H200 juicer. The design prioritizes ease of cleaning.



### ✓ Easy to Assemble

Takes only seconds to put together with minimal parts.

### ✓ Easy to Use

Self-feeding hopper allows you to multi-task.

### ✓ Easy to Clean

Rinse detachable parts without the need for scrubbing.

Image: A visual guide demonstrating how to easily rinse the detachable parts of the juicer under running water, emphasizing the grooved strainer design that eliminates the need for scrubbing.

## 1. Disassembly:

- Ensure the juicer is OFF and unplugged.
- Remove the hopper assembly.
- Lift out the auger, strainer, and inner spinning brush from the chamber.
- Separate the chamber from the motor base.

## 2. Cleaning:

- Rinse all detachable parts (hopper, auger, strainer, inner spinning brush, chamber, juice cup, pulp container) under running water immediately after use.
- The strainer features grooves instead of small holes, making it easy to rinse without scrubbing.
- Use the included cleaning brush for any stubborn residue, though typically not required for the strainer.
- All removable parts are designed for hand washing only. *Do not place parts in a dishwasher.*
- Wipe the motor base with a damp cloth. *Never immerse the motor base in water.*

## 3. Drying and Storage:

- Allow all parts to air dry completely before reassembling or storing.
- Store the juicer in a clean, dry place.

## 7. TROUBLESHOOTING

If you encounter issues with your Hurom H200, refer to the following common problems and solutions:

Problem	Possible Cause	Solution
---------	----------------	----------



Problem	Possible Cause	Solution
Juicer does not turn on.	Not plugged in. Parts not assembled correctly. Power outage.	Ensure the power cord is securely plugged into a working outlet. Check that the hopper and chamber are correctly aligned and locked into place. The juicer has a safety mechanism preventing operation if not assembled properly. Check your household's circuit breaker.
Excessive pulp in juice.	Coarse strainer used. Very soft or overripe produce.	Ensure the fine strainer is used for minimal pulp. Process softer produce slowly or mix with firmer ingredients.
Juicer stops during operation / Motor stalls.	Overloading with too much produce. Hard ingredients causing blockage.	Turn off the juicer, unplug it, and clear any blockages. Reassemble and restart. Cut very hard or fibrous ingredients into smaller pieces.
Low juice yield.	Produce not suitable for juicing. Improper feeding.	Ensure ingredients are fresh and suitable for slow juicing. Feed produce at a steady, slow pace.

## 8. PRODUCT SPECIFICATIONS

Feature	Detail
Brand	Hurom
Model Name	H-200
Model Number	H-200-WBBA03
Color	White
Special Feature	BPA Free
Product Dimensions	10"D x 6.9"W x 17.5"H
Finish Type	Matte or non-glossy finish
Recommended Uses	Fruits, Vegetables, Nuts, Seeds
Product Care Instructions	Hand Wash Only
Capacity	0.5 Liters
Maximum Power	150 Watts



Feature	Detail
Power Source	Corded Electric
Blade Material	Acrylonitrile Butadiene Styrene
Voltage	120 Volts
Number of Speeds	1
Dishwasher Safe	No
Item Weight	24.8 pounds
UPC	888253000905
First Available Date	July 28, 2021



## 9. WARRANTY AND SUPPORT





Hurom provides support for its products. For specific warranty details and customer service, please refer to the official Hurom website or contact Hurom America directly.

- **Warranty Information:** Specific warranty terms and conditions are typically provided with your product registration or on the manufacturer's official website.
- **Customer Support:** For technical assistance, parts replacement, or any inquiries regarding your Hurom H200 Slow Juicer, please visit the [Hurom Store on Amazon](#) or the official Hurom website.
- **Returns:** Refer to your retailer's return policy for information on product returns.

© 2025 Hurom. All rights reserved.

### Related Documents - H-200-WBBA03

	<p><a href="#">Hurom H320N Series Slow Juicer User Manual</a></p> <p>Comprehensive user manual for the Hurom H320N Series slow juicer, covering important safety precautions, operating instructions, assembly, disassembly, cleaning, and troubleshooting.</p>
	<p><a href="#">Hurom H-200 Series Juicer Instruction Manual</a></p> <p>Comprehensive instruction manual for the Hurom H-200 Series juicer, covering important safeguards, operating precautions, assembly, usage, disassembly, cleaning, and troubleshooting. Includes guidance on ingredient preparation and filter selection for optimal juicing.</p>

	<p><a href="#">Hurom H310A Series Instruction Manual: Safe Use, Operation, and Cleaning</a></p> <p>Comprehensive instruction manual for the Hurom H310A Series juicer, covering safety precautions, assembly, operation, cleaning, and troubleshooting. Learn how to use your Hurom juicer effectively and safely.</p>
	<p><a href="#">Hurom H310A Juicer: Instruction Manual and User Guide</a></p> <p>This document provides comprehensive instructions for operating, assembling, cleaning, and troubleshooting the Hurom H310A juicer. It includes safety precautions, ingredient preparation guidelines, and maintenance tips for optimal performance.</p>
	<p><a href="#">Hurom H-310A Slow Juicer User Manual</a></p> <p>Comprehensive user manual for the Hurom H-310A Slow Juicer, covering safety precautions, assembly, operation, cleaning, and troubleshooting.</p>
	<p><a href="#">Hurom Juicer H70ST Series User Manual</a></p> <p>Comprehensive user manual for the Hurom H70ST Series Juicer, covering safe usage, assembly, operation, cleaning, and troubleshooting.</p>