

3M 8211

3M Particulate Respirator 8211 N95 Instruction Manual

Model: 8211 | Brand: 3M

1. INTRODUCTION



The 3M Particulate Respirator 8211 N95 is a disposable respirator designed to provide reliable respiratory protection against certain non-oil based particles. It features a foam faceseal and the 3M Cool Flow Valve, making it suitable for comfortable, extended wear in hot and dusty work environments. This manual provides essential information for the proper use and maintenance of your respirator.

2. PRODUCT FEATURES

- **NIOSH Approved:** Certified for at least 95 percent filtration efficiency against certain non-oil based particles.
- **Comfortable Design:** Features a foam faceseal and soft inner material for enhanced comfort. The cup shape design provides spaciousness and durability.
- **Braided Headbands:** A two-strap design with dual point attachment helps ensure a secure and comfortable seal.
- **Adjustable M-Noseclip:** Easily adjusts to reduce pressure points and improve comfort and fit.
- **Proprietary 3M Cool Flow Exhalation Valve:** Designed to reduce heat and moisture build-up inside the respirator, enhancing comfort during long periods of wear.



Braided headbands two-strap design with dual point attachment helps provide a custom and secure seal.

Inside view of the respirator, highlighting the braided headbands and the Cool Flow Valve.

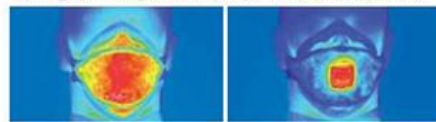


The patented 3M™ Cool Flow™ valve is designed to release your hot, humid exhaled breath quickly, helping to prevent an unpleasant build up of heat inside a respirator - a significant cause of discomfort to respirator wearers.

The 3M Cool Flow valve is used on a range of 3M filtering facepiece respirators including the popular 8511 and 9211 models.

The Cool Flow valve's ability to keep breathing cooler and more comfortable has been demonstrated through testing and thermographic imaging.

Thermographic image measures respirator surface temperature



3M unvalved model

3M Cool Flow valve model

The 3M Cool Flow Valve releases hot, humid exhaled breath, preventing heat build-up inside the facepiece.

3. SAFETY INFORMATION

This respirator is NIOSH (National Institute for Occupational Safety and Health) approved for environments containing certain non-oil based particles and provides at least 95 percent filter efficiency. Breathing hazardous particles can pose a risk to your health. Always ensure proper fit and use according to instructions.



NIOSH Certified Equipment List (CEL) approval ensures product quality and safety standards.

Legal Disclaimer

3M industrial and occupational products are intended, labeled, and packaged for sale to trained industrial and occupational customers for workplace use. Unless specifically stated otherwise on the applicable product packaging or literature, these products are not intended, labeled, or packaged for sale to or use by consumers (e.g., for home, personal, primary or secondary school, recreational/sporting, or other uses not described in the applicable product packaging or literature), and must be selected and used in compliance with applicable health and safety regulations and standards (e.g., U.S. OSHA, ANSI), as well as all product literature, user instructions, warnings, and other limitations, and the user must take any action required under any recall, field action, or other product use notice. Misuse of 3M industrial and occupational products may result in injury, sickness, death, or property damage. For help with product selection and use, consult your on-site safety professional, industrial hygienist, or other subject matter expert. For additional product information, visit www.3M.com.

4. SETUP AND FITTING INSTRUCTIONS

Proper fitting is crucial for effective protection. Follow these steps to ensure a secure seal:

1. **Positioning:** Hold the respirator in your hand with the nosepiece at your fingertips, allowing the headbands to hang freely below your hand.
2. **Placement:** Place the respirator over your nose and mouth. The bottom headband should be positioned around your neck, below your ears. The top headband should be placed across the crown of your head.
3. **Noseclip Adjustment:** Use both hands to mold the M-noseclip to the shape of your nose. Pinching with one hand may result in an improper fit.
4. **Seal Check:** To check the seal, place both hands completely over the respirator and exhale sharply. If air leaks around the edges, readjust the noseclip and headbands until a proper seal is achieved.



Ensure the respirator is positioned correctly over the nose and mouth.

5. OPERATING INSTRUCTIONS

The 3M Particulate Respirator 8211 N95 is designed for use in various applications where protection against non-oil based particles is required. Common uses include:

- Grinding
- Sanding
- Sweeping
- Sawing
- Bagging operations

This respirator can also help reduce inhalation exposures to certain airborne biological particles (e.g., mold, *Bacillus anthracis*, *Mycobacterium tuberculosis*), but it cannot eliminate the risk of contracting infection, illness, or disease.

When to Replace: Discard the respirator and replace it with a new one if it becomes damaged, soiled, or breathing becomes difficult. Always follow your company's safety protocols and local regulations regarding respirator replacement.



Respirator in use during a dusty operation.



6. MAINTENANCE AND STORAGE

The 3M Particulate Respirator 8211 N95 is a disposable product and is not designed to be cleaned or reused. Once used or if breathing becomes difficult, it should be properly discarded.

Storage: Store respirators in their original packaging, away from contaminated areas, dust, sunlight, extreme temperatures, excessive moisture, and damaging chemicals. Ensure the storage area is clean and dry to maintain product integrity.

7. TROUBLESHOOTING

If you experience any issues while using the respirator, consider the following:

- **Air Leakage:** If you feel air leaking around the edges during the seal check, readjust the noseclip and headbands. Ensure the respirator is centered on your face and the headbands are not twisted. Repeat the seal check.
- **Discomfort:** If the respirator feels uncomfortable, ensure the headbands are not too tight or too loose. Adjust the M-noseclip for a better fit over the bridge of your nose.
- **Difficulty Breathing:** If breathing becomes difficult, the respirator may be overloaded with particles. Discard the used respirator and replace it with a new one.
- **Damage:** If the respirator is visibly damaged (e.g., torn material, broken headbands, damaged valve), discard it immediately and use a new one.

If problems persist, discontinue use and consult with your safety supervisor or 3M technical support.

8. SPECIFICATIONS

Attribute	Detail
Product Dimensions	10 x 5 x 6 inches
Item Weight	1.44 ounces
Model Number	8211
Filter Class	N95
Color	White
Number of Items	10 (Pack)
Manufacturer	3M
Date First Available	September 1, 2004

9. WARRANTY AND SUPPORT

3M is committed to providing high-quality personal protective equipment. For specific warranty information or technical support regarding your 3M Particulate Respirator 8211 N95, please visit the official 3M website or contact 3M customer service directly.

For additional product information and resources, please visit: www.3M.com



© 2024 3M. All rights reserved. This manual is for informational purposes only.