

## Eaton BRS225

# Eaton BRS225 225A Lug Kit Instruction Manual

Model: BRS225

## INTRODUCTION

This manual provides essential instructions for the safe and proper installation, operation, and maintenance of the Eaton BRS225 225A Lug Kit. This lug kit is designed for use in BR series load centers and circuit breakers.

Please read this manual thoroughly before proceeding with installation or use. Retain this manual for future reference.

## IMPORTANT SAFETY INFORMATION

**WARNING: Risk of electric shock or fire. Installation and servicing must be performed by qualified personnel only.**

- Always disconnect power at the main service panel before working on electrical equipment.
- Use appropriate personal protective equipment (PPE).
- Verify all connections are secure and torqued to specifications to prevent overheating.
- Ensure all local and national electrical codes are followed.
- Do not use this product for applications other than those specified.

## SETUP AND INSTALLATION

The Eaton BRS225 225A Lug Kit is designed for secure electrical connections within compatible BR series load centers. Follow these steps for proper installation:

### 1. Preparation

- Ensure power to the load center is completely disconnected and verified with a voltage tester.
- Gather necessary tools: screwdriver, torque wrench, wire strippers, and appropriate PPE.

## 2. Inspecting the Lug Kit

Before installation, visually inspect the lug kit for any damage. The kit includes two lugs for a 2-pole connection.



Image: The Eaton BRS225 225A Lug Kit shown in its retail packaging alongside the lug assembly itself. The packaging indicates "Eaton 225 2P Pole Lug Block Kit BRS225" and includes a UPC of 0786676461405.



Image: A side view of the Eaton BRS225 lug kit, highlighting the product label. The label specifies "EATON CAT. NO. BRS225", "225 AMPS - 120/240 VAC", "#2-300 AWG AL/CU", and "REQUIRED TORQUE: 200 LB. IN."

### 3. Conductor Preparation

- This lug kit accepts conductor sizes from 2 AWG (minimum) to 300 KCMIL (maximum).
- It is compatible with both copper and aluminum conductor materials.
- Strip the insulation from the conductor ends to the appropriate length, ensuring full contact within the lug terminal without exposed bare wire beyond the lug.

### 4. Installing Conductors into Lugs

- Insert the prepared conductor into the lug opening.
- Tighten the lug screw using a torque wrench to the specified torque of **200 lb. in.** (pound-inches). Proper torque is critical for a safe and reliable connection.
- Repeat for the second conductor if using a 2-pole configuration.

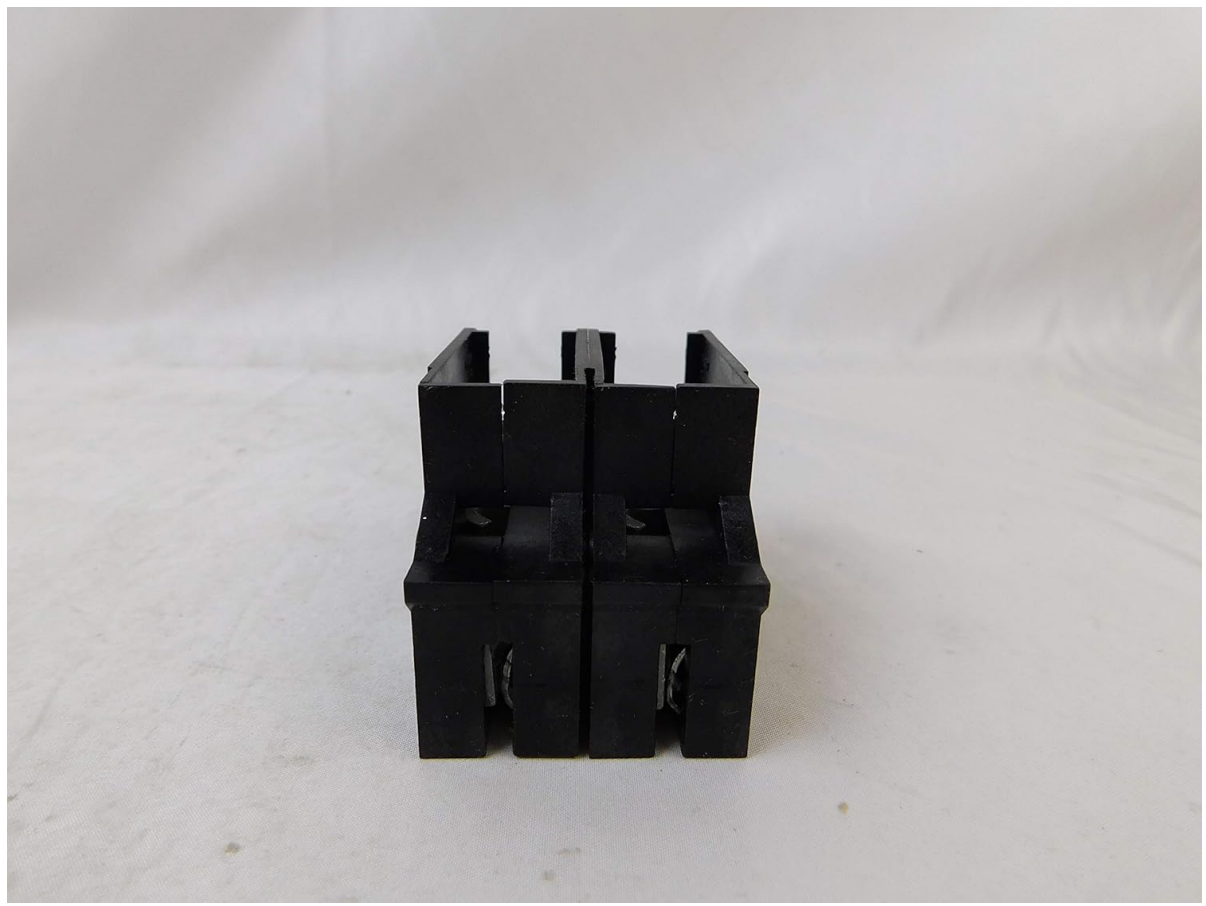


Image: A front view of the Eaton BRS225 lug kit, showing the two terminal openings where conductors are inserted and secured.



Image: A top-down view of the Eaton BRS225 lug kit, illustrating the design of the two individual lug terminals.

## 5. Mounting in Load Center

- Mount the lug kit securely into the designated position within the BR series load center. This kit is designed to occupy the space of a 2-pole breaker.
- Ensure the lug kit is firmly seated and all mounting hardware (if applicable) is tightened.



Image: A rear view of the Eaton BRS225 lug kit, showing the mounting clips or tabs that secure it into a compatible load center.



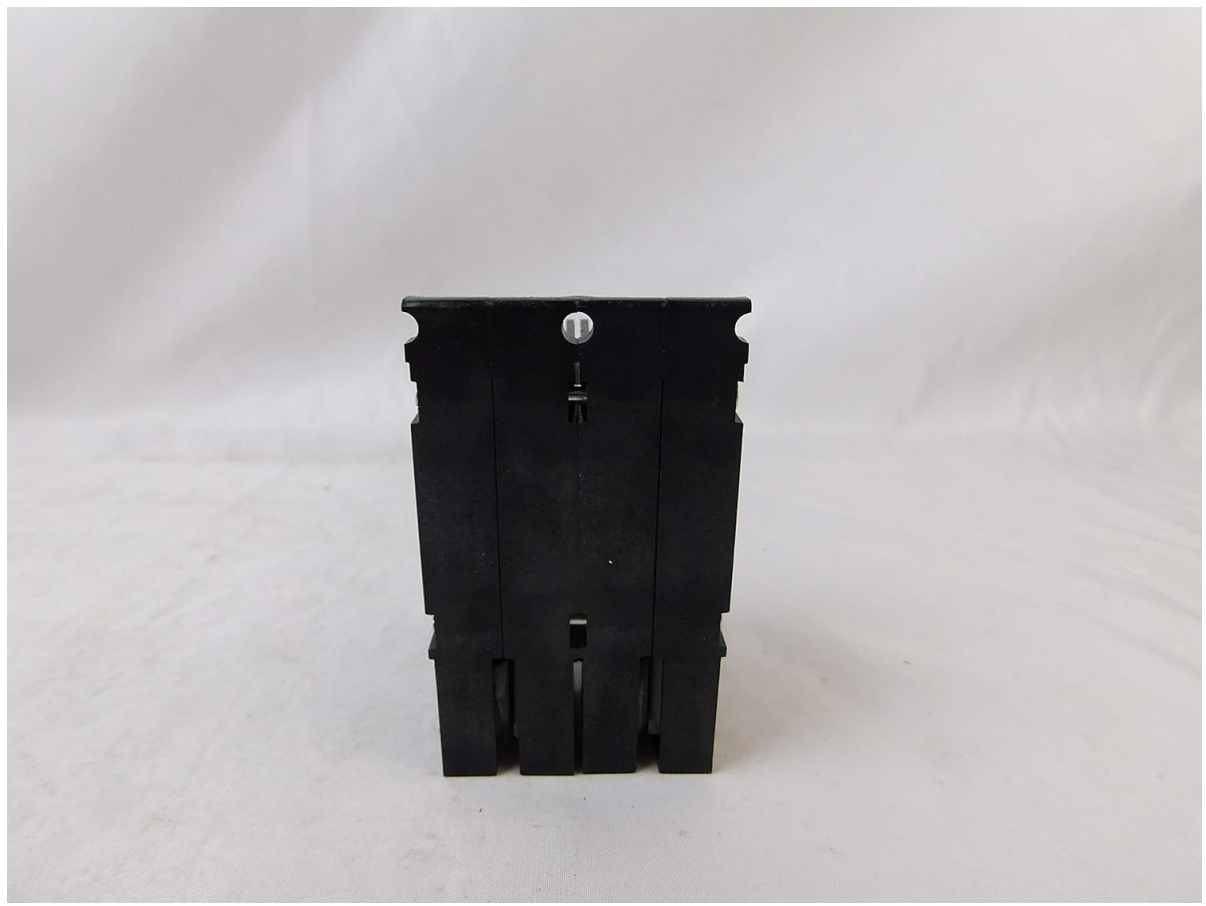


Image: A bottom view of the Eaton BRS225 lug kit, showing the base and structural elements.

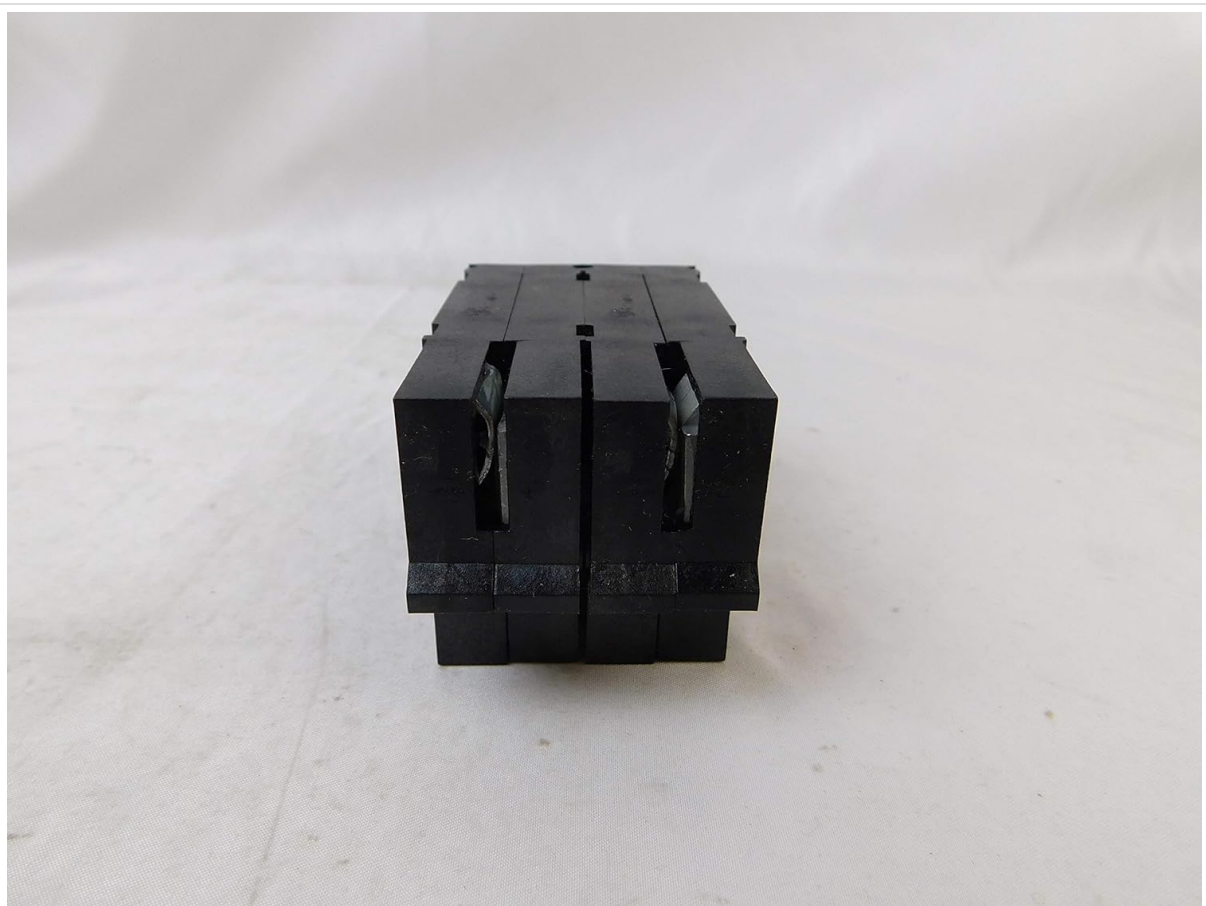


Image: An angled view of the Eaton BRS225 lug kit, providing a comprehensive look at its form factor and terminal design.

## OPERATION

---

The Eaton BRS225 225A Lug Kit functions as a passive electrical connector. Once properly installed and torqued, it provides a secure and reliable connection point for main feeder wires or other high-current applications within the load center. There are no user-operable controls on the lug kit itself.

## MAINTENANCE

---

Regular maintenance is crucial for the longevity and safety of your electrical system. For the Eaton BRS225 225A Lug Kit:

- **Periodic Inspection:** Annually, or as recommended by local codes, have a qualified electrician inspect the lug connections for signs of overheating (discoloration, melting insulation) or loose connections.
- **Re-torque:** If any connections appear loose or show signs of movement, re-torque them to the specified 200 lb. in. after disconnecting power.
- **Cleaning:** Keep the area around the lug kit clean and free of dust, debris, and moisture.

## TROUBLESHOOTING

---

If you experience issues related to the electrical connection, consider the following:

- **Overheating/Discoloration:** This often indicates a loose connection or an undersized conductor. Immediately disconnect power and have a qualified electrician inspect and re-torque connections or replace conductors if necessary.
- **Intermittent Power:** Could be a loose connection. Follow safety procedures to inspect and re-torque.
- **Physical Damage:** If the lug kit appears physically damaged, it must be replaced by a qualified electrician.

**Always consult a qualified electrician for any electrical issues you are unsure about.**

## SPECIFICATIONS

---

Feature	Detail
Model Number	BRS225
Current Rating	225 Amps
Voltage Rating	120/240 VAC
Number of Poles	2
Conductor Size (Min)	2 AWG
Conductor Size (Max)	300 KCMIL
Conductor Material	Copper/Aluminum
Required Torque	200 lb. in.
Compatibility	BR Series Load Centers and Circuit Breakers

Feature	Detail
Item Weight	7 ounces
Package Dimensions	4.41 x 3.66 x 3.46 inches

## WARRANTY INFORMATION

---

The Eaton BRS225 225A Lug Kit comes with a **10-Year Warranty** from the date of purchase. This warranty covers defects in materials and workmanship under normal use and service. For warranty claims or detailed terms and conditions, please contact Eaton customer support.

## CUSTOMER SUPPORT

---

For technical assistance, product inquiries, or support, please visit the official Eaton website or contact their customer service department. Ensure you have your product model number (BRS225) available when seeking support.

Official Eaton Website: [www.eaton.com](http://www.eaton.com)