

RYOBI 000998263

Homelite/Ryobi Sprocket Drum & Bearing Assembly 000998263 Instruction Manual

Model: 000998263

INTRODUCTION

This instruction manual provides essential information for the proper installation and maintenance of the Homelite/Ryobi Sprocket Drum & Bearing Assembly, part number 000998263. This component is a genuine OEM replacement part designed for specific Homelite and Ryobi chainsaw models. Adhering to these instructions and consulting your equipment's original owner's manual will ensure correct fitment and operation.

SAFETY INFORMATION

Always prioritize safety when working with power tools and their components. Failure to follow safety guidelines can result in serious injury or damage to equipment.

- **Disconnect Power:** Before attempting any installation or maintenance, ensure the power tool (e.g., chainsaw) is completely turned off and disconnected from its power source (e.g., spark plug wire removed, battery removed, or unplugged).
- **Wear Protective Gear:** Always wear appropriate personal protective equipment (PPE), including safety glasses, gloves, and sturdy footwear.
- **Consult Owner's Manual:** Refer to the original equipment manufacturer's owner's manual for specific disassembly and assembly procedures for your particular model.
- **Use Correct Tools:** Utilize the correct tools for the job to prevent damage to the part or the equipment.
- **Secure Work Area:** Work in a well-lit, stable, and clean environment.

PACKAGE CONTENTS

The package includes the following genuine OEM replacement part:

- (1) Homelite/Ryobi Sprocket Drum & Bearing Assembly (Part Number: 000998263)

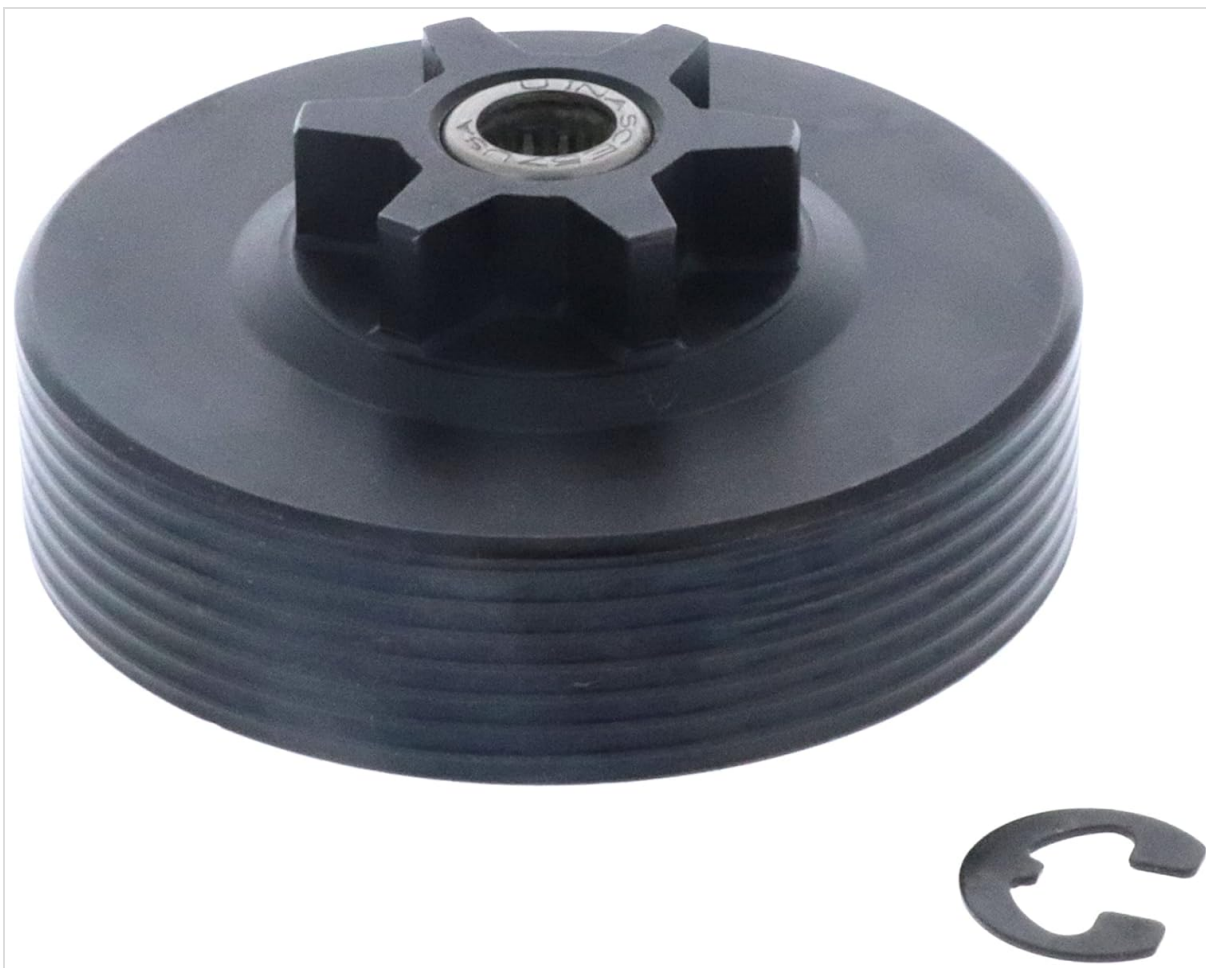


Image: The Homelite/Ryobi Sprocket Drum and Bearing Assembly, part number 000998263. The image displays the black sprocket drum with a star-shaped center and a separate C-clip.

COMPATIBILITY

This sprocket drum and bearing assembly is compatible with a wide range of Homelite and Ryobi chainsaw models. Always verify your specific model number against this list or consult your equipment's owner's manual to ensure proper fitment.

Compatible Models Include:

- Homelite: UT-10848, D3300, UT-10803, UT10868, UT10878, UT10861, 8cc, UT10886, UT10865, UT10866, UT10887, UT10846, UT10884, UT10856, UT10858, UT10885, UT10888, UT10869, UT10867, UT10860, UT10864, UT10862, UT10859, UT10863, w, UT10874, UT10847, UT10941, UT10881, UT10853, UT10883, UT10870, UT10901, UT10880, UT10857, UT10882, UT10854, UT10901B, UT10945, UT10901A -, UT10926-, UT10910-, UT-10817, UT10786 Z3300c, UT-10829, UT10782 Z3300, PS33, UT-10790 All American, UT-10797-R B2014, UT-10934 B2014, UT-10798R B2316, UT-10936 B2316, UT-10798-R1 B2316, UT-10937 B2316, UT-10877 B2718, UT-10938 B2718, UT-10875 B2720, UT-10939 B2720, UT-10876 B2720CC, UT-10940 B2720CC, UT-10779-A D3300, UT-10821 D3300, UT-10784 D3300C, UT-10784-A D3300C, UT-10828 D3300C, UT-10767 D3350B, UT-10767-A D3350B, UT-10768 D3350BC, UT-10768-A D3350BC, UT-10780 D3800, UT-10780-A D3800, UT-10783 D3800C, UT-10769 D3850B, UT-10769-A D3850B, UT-10833 D3850B, UT-10770 D3850BC, UT-10770-A D3850BC, UT-10824 D3850BC, UT-10837 D3850BC, UT-10838 D3850BC, UT-10801 D4150B UT-10802 D4150B, UT-10787 D4550B, UT-10832 D4550B, UT-10836 D4550BC, UT-10774 I3350B, UT-10774-A I3350B, UT-10840 I3350B, UT-10758 I3850B, UT-10758-A I3850B, UT-10808 I4150B, UT-10839 I4150B, UT-10807, UT-10834, UT-10799-R N3014, UT-10932 N3014, UT-10799-R1 N3014, UT-10933 N3014, UT-10800-R N3316, UT-10782-A 20, UT-10786-A 20, UT-10818 20, UT-10759-A 20AV, UT-10771-A 20AV, UT-10781-A 23, UT-10785-A 23, UT-10815 23, UT-10842 23, UT-10772-A 23AV, UT-10820 23AV, UT-10773-A 23AV, UT-10822 23AV, UT-10823 23AV, UT-10804 25AV, UT-10805 27AV, UT-10831 27AV, UT-0825 27AV, UT-10827 27AV, UT-10830 27AV, UT-10835 27AV.

INSTALLATION INSTRUCTIONS

The following are general steps for replacing a sprocket drum and bearing assembly. Specific procedures may vary by chainsaw model. Always consult your chainsaw's owner's manual for detailed, model-specific instructions and diagrams.

1. **Prepare the Chainsaw:** Ensure the chainsaw is turned off, the spark plug wire is disconnected (for gas models), or the battery is removed (for electric models). Place the chainsaw on a stable, flat surface.
2. **Remove Bar and Chain:** Loosen the bar nuts and remove the guide bar and saw chain.
3. **Access Clutch/Sprocket Area:** Remove the clutch cover. Depending on your model, you may need a clutch removal tool to detach the clutch assembly.
4. **Remove Old Sprocket Drum and Bearing:** Once the clutch is removed, the old sprocket drum and bearing assembly can typically be pulled off the crankshaft. Note the orientation of all components.
5. **Inspect Components:** Before installing the new part, inspect the crankshaft, oil pump worm gear, and any other related components for wear or damage. Replace any worn parts as necessary.
6. **Install New Bearing:** Place the new bearing onto the crankshaft.
7. **Install New Sprocket Drum:** Slide the new sprocket drum (part 000998263) onto the crankshaft, ensuring it engages correctly with the oil pump worm gear.
8. **Reassemble Clutch and Cover:** Reinstall the clutch assembly, ensuring it is tightened to the manufacturer's specifications. Replace the clutch cover.
9. **Reinstall Bar and Chain:** Mount the guide bar and saw chain, adjusting chain tension according to your owner's manual.
10. **Test Operation:** Reconnect the spark plug wire or battery. Start the chainsaw and allow it to idle briefly to ensure proper operation. Check for any unusual noises or vibrations.

If you are unsure about any step, it is recommended to seek assistance from a qualified service technician.

MAINTENANCE

Regular maintenance of your sprocket drum and bearing assembly will extend its lifespan and ensure optimal chainsaw performance.

- **Cleaning:** Periodically remove the clutch cover, bar, and chain to clean sawdust, debris, and oil residue from around the sprocket drum and bearing.
- **Lubrication:** Ensure the bearing receives adequate lubrication from the chainsaw's oiling system. Check the oiler output regularly.
- **Inspection:** Inspect the sprocket teeth for wear. Worn or "hooked" teeth can cause premature chain wear and poor cutting performance. Replace the sprocket drum if teeth show significant wear.
- **Bearing Check:** Check the bearing for smooth operation. If it feels rough or makes noise, it may need replacement.

TROUBLESHOOTING

If you experience issues after installing the new sprocket drum and bearing assembly, consider the following:

- **Chain Not Moving or Slipping:**
 - Ensure the sprocket drum is correctly seated on the crankshaft and engaging with the oil pump worm gear.
 - Verify the clutch is properly installed and functioning.
 - Check chain tension.
- **Unusual Noise or Vibration:**
 - Recheck all connections and ensure components are tightened correctly.
 - Inspect the bearing for proper seating and smooth rotation.
 - Ensure the guide bar and chain are installed correctly and not binding.
- **Oil Leakage Around Sprocket:**
 - Verify the oil pump and its seals are intact and properly installed.

- Ensure the clutch cover gasket (if applicable) is in good condition.

For persistent issues, consult your chainsaw's owner's manual or contact a certified service center.

SPECIFICATIONS

Part Number:	000998263
Brand:	RYOBI (Homelite/Ryobi compatible)
Manufacturer:	Homelite
Item Weight:	2.88 ounces
Product Dimensions:	2.5 x 2.5 x 3 inches
Type:	Sprocket Drum & Bearing Assembly
Compatibility:	Refer to the "Compatibility" section and your equipment's owner's manual.

WARRANTY AND SUPPORT

As a genuine OEM replacement part, this sprocket drum and bearing assembly is typically covered under the original equipment manufacturer's warranty for replacement parts. Please refer to the warranty information provided with your original Homelite or Ryobi power tool, or contact the respective manufacturer's customer support for details regarding warranty coverage and technical assistance.

For further support or inquiries, please consult the official Homelite or Ryobi customer service channels.