

## Elster Rex2

# Elster Rex2 Utility Grade kWh Electricity Meter User Manual

Model: Rex2

## 1. INTRODUCTION

---

This manual provides comprehensive instructions for the Elster Rex2 Utility Grade kWh Electricity Meter. This device is designed for accurate measurement of electrical energy consumption in residential and commercial applications. It is suitable for both indoor and outdoor installations and is rated for 240 Volt, 200 Amp, 60Hz service. For safe and proper operation, please read this manual thoroughly before installation and use.

## 2. SAFETY INFORMATION

---

**WARNING:** Installation and servicing of this electricity meter involve high voltage and current. Improper installation or handling can result in serious injury, death, or property damage.

- Always ensure power is disconnected at the main service panel before attempting any installation, inspection, or maintenance.
- Installation must be performed by a qualified and licensed electrician in accordance with all local and national electrical codes.
- Do not attempt to open or tamper with the meter enclosure. There are no user-serviceable parts inside.
- Wear appropriate personal protective equipment (PPE), including insulated gloves and safety glasses.
- Verify all connections are secure and properly insulated before restoring power.

## 3. PRODUCT OVERVIEW

---

The Elster Rex2 meter is a utility-grade electric meter designed for reliable and accurate energy measurement. Key features include:

- **Utility Grade:** Complies with ANSI C12.1 standards for electricity metering.
- **Durable Enclosure:** NEMA 3R rated, allowing for both indoor and outdoor installation.

- **High Capacity:** Capable of handling up to 200 Amp service.
- **Standard Compatibility:** Designed to fit into any standard meter socket.
- **Voltage Rating:** Operates on 240 Volt, 60Hz systems, commonly found in 120/240 Volt service installations.
- **Accurate Measurement:** Provides billing-quality reads for kilowatt-hour (kWh) consumption.



**Figure 1:** Front view of the Elster Rex2 Utility Grade kWh Electricity Meter. This image displays the meter's digital display, the Elster logo, and various identification labels including serial number 12909166, LAN ID 069-0005695056, and FCC ID QZC-RX2EA4. The meter is housed in a clear, protective enclosure.

## 4. SETUP AND INSTALLATION

The Elster Rex2 meter is designed for straightforward installation into a standard meter socket. However, due to the electrical nature of the device, **installation must be performed by a qualified and licensed electrician**. This ensures compliance with all safety regulations and proper functionality.

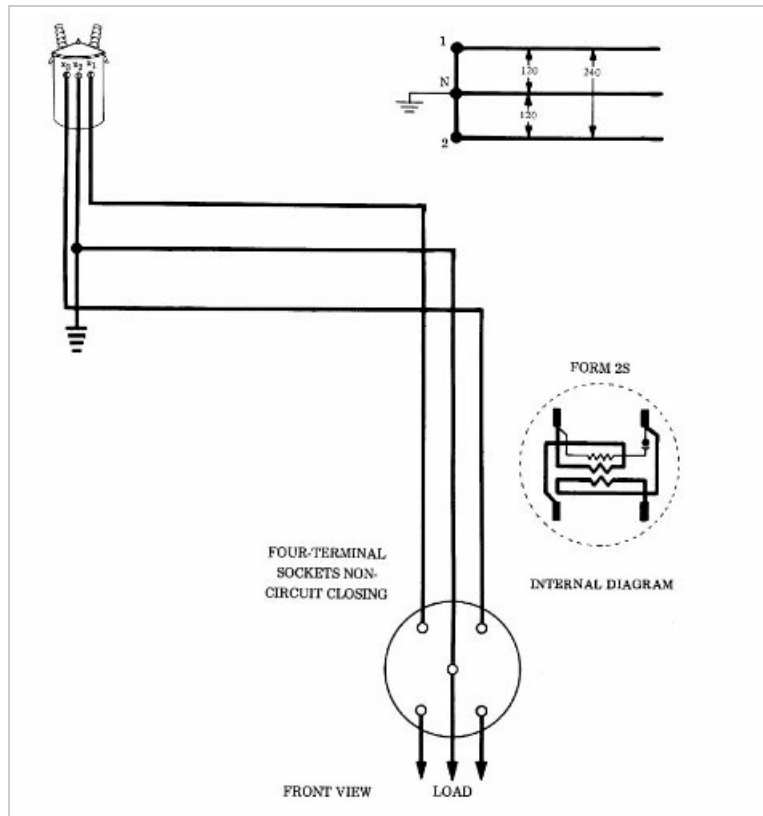
### 4.1 Pre-Installation Checks

- Verify that the meter's voltage and current ratings (240V, 200A, 60Hz) match the electrical service requirements.
- Ensure the meter socket is clean, free of debris, and in good condition.

- Confirm that the main power supply to the meter socket is completely disconnected and locked out.

## 4.2 Installation Procedure (For Qualified Electricians Only)

1. Carefully remove the meter from its packaging.
2. Align the meter's blades with the corresponding terminals in the meter socket.
3. Insert the meter firmly and evenly into the socket until it is fully seated.
4. Secure the meter in place using any retaining clips or locking mechanisms provided by the meter socket.
5. Once the meter is securely installed, the main power supply can be reconnected by the qualified electrician.
6. Verify proper operation by observing the meter's display and ensuring it powers on.



**Figure 2:** Typical wiring diagram for the Elster Rex2 meter (Form 2S) in a four-terminal, non-circuit closing socket. This diagram illustrates the connection points for the incoming lines (1, N, 2) from the transformer and the outgoing lines to the load, along with an internal diagram of the Form 2S meter.

## 5. OPERATING INSTRUCTIONS

The Elster Rex2 meter operates automatically once installed and powered. It continuously measures and records electricity consumption.

### 5.1 Reading the Meter Display

The meter features a digital display that cycles through various readings. The primary reading for energy consumption is typically displayed in kilowatt-hours (kWh).

- **kWh Reading:** This is the cumulative total of electricity consumed. It is usually clearly labeled on the display.
- **Other Readings:** The meter may also display instantaneous demand (kW), voltage, current, and other diagnostic information. These readings typically cycle automatically.



**Figure 3:** Close-up view of the Elster Rex2 meter, highlighting the digital display area and various product labels. The display shows numerical readings, and the labels provide critical information such as serial number 12909166, LAN ID 069-0005695056, and meter specifications (CL200, 240V, 3W, 60Hz, FM 2S).

## 6. MAINTENANCE

---

The Elster Rex2 Utility Grade kWh Electricity Meter is designed for minimal maintenance. As a sealed, utility-grade device, it contains no user-serviceable parts.

- **Cleaning:** If necessary, the exterior of the meter can be wiped with a damp cloth to remove dust or dirt. Do not use abrasive cleaners or solvents.
- **Inspections:** Periodically, a qualified electrician or utility personnel may inspect the meter and its connections for signs of wear, damage, or loose connections.
- **Do Not Open:** Attempting to open the meter enclosure will void any warranty and can expose you to dangerous electrical components.

## 7. TROUBLESHOOTING

---

If you experience issues with your Elster Rex2 meter, consider the following:

- **No Display/No Power:**

- Ensure the main power supply to the meter socket is active.
- Contact a qualified electrician to inspect the meter's connections and the electrical service.
- **Incorrect Readings:**
  - If you suspect inaccurate readings, contact your electricity provider or a qualified electrician for verification and potential calibration.
- **Physical Damage:**
  - If the meter enclosure is damaged, contact your electricity provider or a qualified electrician immediately. Do not attempt to repair it yourself.

For any issues beyond basic observation, it is crucial to contact a qualified electrician or your local utility company. Do not attempt to diagnose or repair electrical equipment yourself.

## 8. SPECIFICATIONS

Feature	Specification
Model Number	Rex2
Voltage Rating	240V
Current Capacity	Up to 200 Amp
Frequency	60Hz
Enclosure Rating	NEMA 3R (Indoor/Outdoor)
Compliance	ANSI C12.1
Product Dimensions	7 x 7 x 5.3 inches
Weight	5 Pounds
Manufacturer	Elster

## 9. WARRANTY AND SUPPORT

Specific warranty details for the Elster Rex2 meter are typically provided at the point of purchase or by the manufacturer. As a utility-grade device, support is often handled through your local electricity provider or a certified electrical contractor.

- For technical assistance, installation questions, or warranty claims, please refer to the documentation provided with your purchase or contact the vendor.
- In case of suspected malfunction or damage, always contact a qualified electrician or your utility company.