

TRIXIE 60446

Trixie Honey & Hopper Glass Water Bottle 250 ml Instruction Manual

1. INTRODUCTION

Welcome to the instruction manual for your Trixie Honey & Hopper Glass Water Bottle 250 ml. This manual provides essential information for the safe and effective use, installation, maintenance, and troubleshooting of your new pet water dispenser. Please read these instructions carefully before first use and retain them for future reference.

2. PRODUCT OVERVIEW

The Trixie Honey & Hopper Glass Water Bottle is designed to provide a reliable and hygienic water source for small animals. Its glass construction ensures durability and easy cleaning, while the metal spout offers bite resistance. The integrated float allows for convenient monitoring of the water level.

Key Features:

- **Capacity:** 250 ml, suitable for various small pets.
- **Material:** Durable glass bottle with a metal cap, straw, and drinking valve for hygiene and longevity.
- **Bite-Resistant Spout:** Designed to withstand chewing from small animals.
- **Water Level Indicator:** Features a float for easy monitoring of water consumption.
- **Secure Attachment:** Includes a tension spring slot and wire holder for stable mounting on cages or hutches.
- **Easy Installation:** Simple to attach and detach for refilling and cleaning.








Image 2.1: The Trixie Honey & Hopper Glass Water Bottle, showcasing its clear glass body, illustrated design, and metal drinking spout. This image provides a full view of the product as it would appear when installed.

3. SAFETY INSTRUCTIONS

Please observe the following safety guidelines to ensure the well-being of your pet and the longevity of the product:

- Always ensure the bottle is securely attached to prevent it from falling and potentially injuring your pet or breaking.
- Regularly inspect the glass bottle for cracks or damage. Discontinue use immediately if any damage is found to prevent injury.
- Check the metal spout and valve for any blockages or wear. Ensure the drinking ball moves freely.
- Keep out of reach of children when not in use or during cleaning.
- This product is intended for small animals. Do not use for purposes other than its intended use.

4. SETUP

Follow these steps to properly set up your Trixie Honey & Hopper Glass Water Bottle:

1. **Unpack Components:** Carefully remove the glass bottle, metal spout assembly, and wire holder from the packaging.
2. **Assemble Spout:** Ensure the metal cap, straw, and drinking valve are securely fitted onto the glass bottle. The metal cap should be tightly screwed onto the bottle opening.
3. **Attach Wire Holder:** Position the wire holder around the neck of the bottle, ensuring it sits snugly in the designated groove. The hooks of the holder should face upwards, ready to attach to the cage.



Image 4.1: The metal wire holder, designed for secure attachment of the water bottle to a cage or hutch. The hooks are visible at the top, ready for installation.

4. **Fill Bottle:** Unscrew the metal cap from the bottle. Fill the bottle with fresh, clean water. Do not overfill.
5. **Re-attach Spout:** Screw the metal cap with the spout assembly back onto the filled bottle tightly to prevent leaks.
6. **Mount to Cage:** Hang the bottle on the outside of your pet's cage or hutch using the wire holder. Ensure the spout is at an appropriate height for your pet to comfortably reach. The tension spring slot provides additional security.







Image 4.2: A close-up view of the metal drinking spout and the base of the glass bottle, illustrating how the spout assembly connects to the bottle and the secure fit for preventing leaks.

5. OPERATING INSTRUCTIONS

Using your Trixie Honey & Hopper Glass Water Bottle is straightforward:

- **Water Supply:** Ensure the bottle is always filled with fresh, clean water. Check the water level daily.
- **Water Level Monitoring:** The yellow float inside the bottle will indicate the current water level. When the float is low, it's time to refill.
- **Drinking Mechanism:** Your pet will drink by licking the metal ball at the end of the spout, which releases water. Ensure your pet understands how to use a ball-valve dispenser.





Image 5.1: The water bottle displaying clear measurement markings (in milliliters) on its side, along with the yellow float that indicates the water level, aiding in easy monitoring.

6. MAINTENANCE AND CLEANING

Regular cleaning is crucial for your pet's health and the product's longevity:

- **Daily Check:** Inspect the water bottle daily for cleanliness and refill with fresh water.
- **Weekly Cleaning:** For thorough cleaning, disassemble the bottle by unscrewing the metal cap.
- **Glass Bottle:** The glass bottle is dishwasher safe. Alternatively, wash by hand with warm, soapy water and a bottle brush. Rinse thoroughly to remove all soap residue.
- **Spout Assembly:** Clean the metal spout, straw, and drinking valve with a small brush (e.g., a pipe cleaner) to remove any debris or algae buildup. Ensure the drinking ball moves freely after cleaning.
- **Drying:** Allow all components to air dry completely before reassembling to prevent mold or bacterial growth.

7. TROUBLESHOOTING

If you encounter any issues with your water bottle, refer to the following common problems and solutions:

- **Leaking:**
 - Ensure the metal cap is screwed on tightly and straight.
 - Check the rubber seal (if present) for proper placement and damage.
 - Sometimes, a new bottle may drip initially until a vacuum forms. Tap the ball valve a few times

to help create the vacuum.

- **No Water Flow:**
 - Check if the drinking ball is stuck. Gently tap it or clean the spout to ensure free movement.
 - Ensure the straw inside the bottle is not blocked or dislodged.
 - Verify that the bottle is filled with water and there is no airlock.
- **Bottle Falling Off Cage:**
 - Ensure the wire holder is correctly installed and securely hooked onto the cage bars.
 - Check that the bottle is properly seated in the wire holder's groove.

8. SPECIFICATIONS

Feature	Detail
Model Number	60446
Capacity	250 Millilitres
Bottle Material	Glass
Spout/Holder Material	Metal
Color	Clear
Dimensions (L x W x H)	10 x 30.5 x 5.5 cm
Weight	330 grams
Recommended Species	Guinea pigs, small rodents, rabbits
Bite Resistance	Yes
Country of Origin	Germany
Indoor/Outdoor Use	Indoor

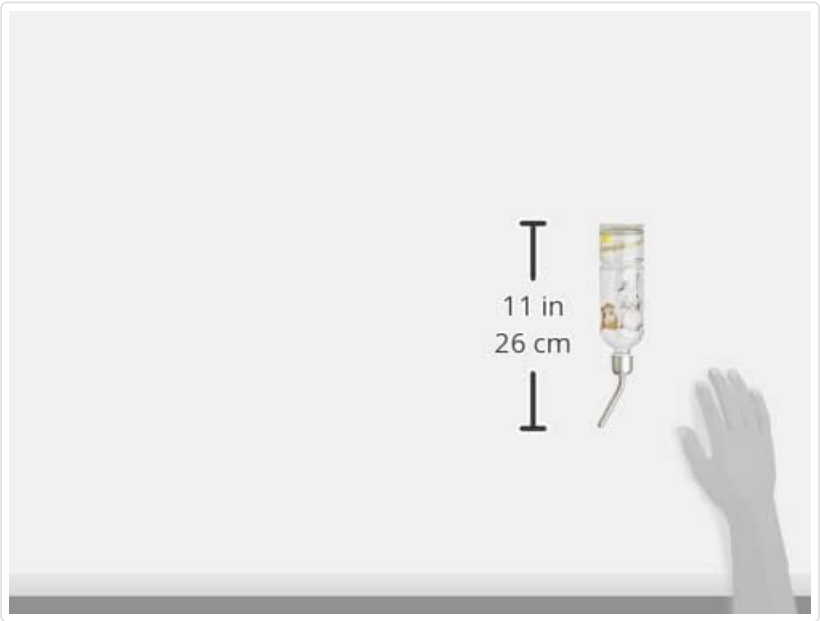


Image 8.1: The Trixie Honey & Hopper Glass Water Bottle shown alongside a human hand, providing a visual reference for its approximate size and dimensions.

9. WARRANTY AND SUPPORT

For warranty information or product support, please refer to the retailer where you purchased the Trixie Honey & Hopper Glass Water Bottle 250 ml or contact Trixie directly through their official website. Keep your proof of purchase for any warranty claims.

Related Documents - 60446

	<p>TRIXIE Vital Dome Pet Drinking Fountain: User Manual and Instructions</p> <p>Comprehensive guide for the TRIXIE Vital Dome pet drinking fountain. Includes setup instructions, operation, cleaning procedures, pet acclimation tips, and technical specifications. Ensures optimal hydration for cats and dogs with fresh, flowing water.</p>
	<p>TRIXIE Polygon Pet Drinking Fountain: Instruction Manual & Setup Guide</p> <p>A comprehensive guide to setting up, using, and maintaining the TRIXIE Polygon pet drinking fountain. Learn how this innovative fountain encourages pets to drink more fresh, oxygenated water. Includes detailed instructions, safety warnings, and cleaning advice.</p>
	<p>TRIXIE 63003 Burrowing Box: Assembly Instructions & Usage Guide</p> <p>Detailed assembly instructions and usage guide for the TRIXIE 63003 Burrowing Box. Learn how to assemble, fill with sand, and maintain this pet digging toy for small animals like rabbits. Includes product care and manufacturer information.</p>
	<p>TRIXIE TX6 Automatic Food Dispenser User Manual and Instructions</p> <p>Detailed user manual for the TRIXIE TX6 Automatic Food Dispenser. Learn how to install batteries, set feeding times, portion sizes, troubleshoot issues, and ensure safe operation for your pet's meals.</p>
	<p>TRIXIE TX1 / TX2 Automatic Pet Feeder User Manual</p> <p>Comprehensive instructions for setting up, using, and maintaining the TRIXIE TX1 and TX2 automatic pet feeders, covering time setting, placement, pet acclimatization, food suitability, and cleaning.</p>



[TRIXIE Pet Carrier Assembly Instructions #39343](#)

Comprehensive guide for assembling the TRIxie #39343 pet carrier. Includes a detailed parts list and step-by-step visual instructions for easy setup.