

E528-2325

Instruction Manual for Generic Emachines E528-2325 Laptop LCD Screen Replacement

Model: E528-2325 | Part Number: LED-1366-768-G-40-15.6-EE9011

- [Introduction](#)[Safety Information](#)[Setup & Installation](#)[Operating](#)[Check](#)[Maintenance](#)[Troubleshooting](#)[Specifications](#)[Warranty & Support](#)

1. INTRODUCTION

This manual provides instructions for the installation, operation, and maintenance of your new Generic 15.6-inch WXGA HD LED Laptop LCD Screen Replacement, compatible with Emachines E528-2325 laptops. Please read this manual thoroughly before attempting installation to ensure proper handling and to prevent damage to the product or your device.

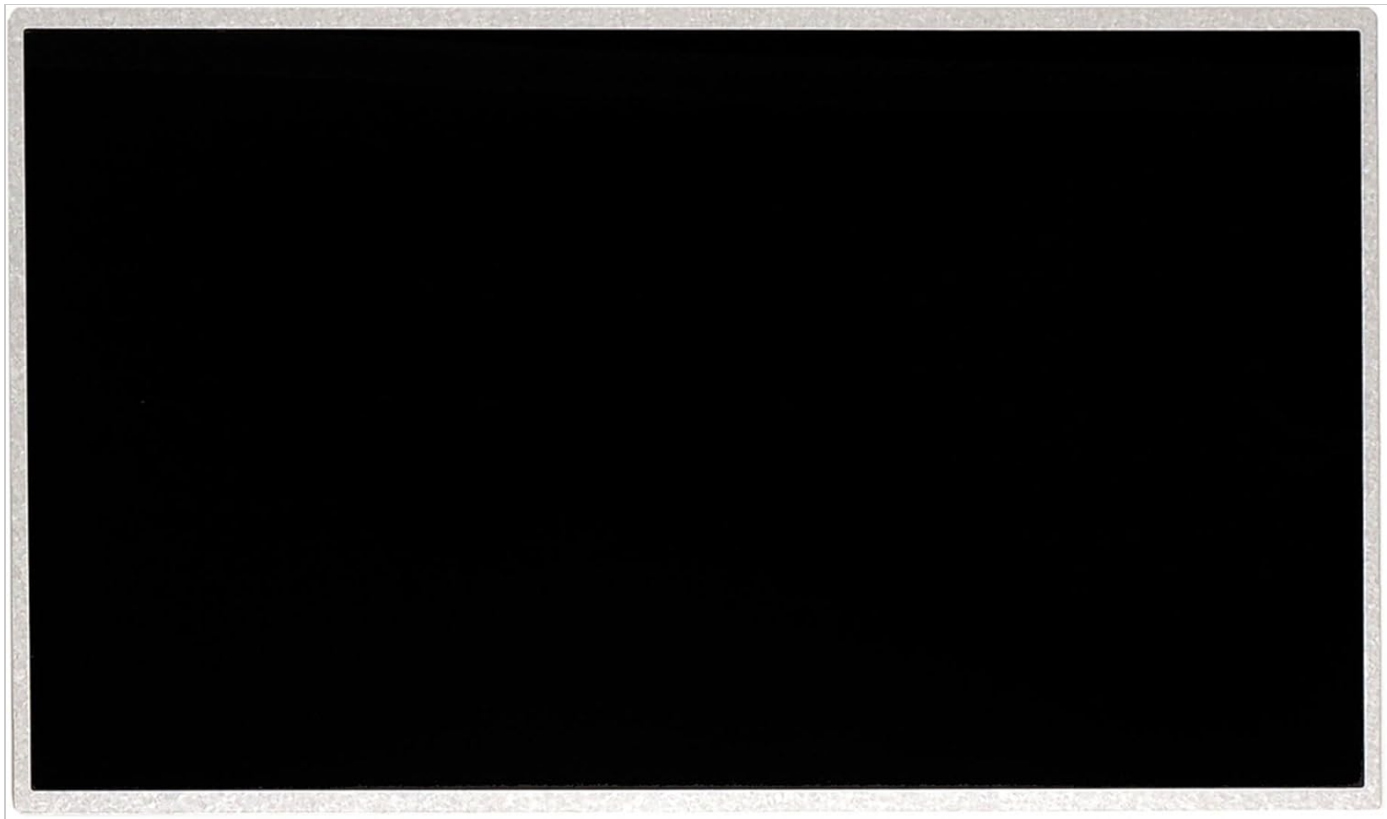


Figure 1: Front view of the replacement LCD screen. This image shows the display surface and the slim bezel.

2. SAFETY INFORMATION

Always observe the following safety precautions:

- **Disconnect Power:** Before beginning any installation, ensure your laptop is completely powered off and unplugged from all power sources. Remove the battery if possible.
- **Static Electricity:** Wear an anti-static wrist strap or frequently touch a grounded metal object to discharge static electricity, which can damage electronic components.
- **Handle with Care:** LCD screens are fragile. Handle the replacement screen by its edges and avoid touching the display surface.
- **Tools:** Use appropriate, non-magnetic tools to avoid damaging screws or internal components.
- **Professional Assistance:** If you are unsure about any step, seek assistance from a qualified technician.

3. SETUP & INSTALLATION

This section outlines the general steps for replacing a laptop LCD screen. Specific disassembly procedures may vary by laptop model. Refer to your laptop's service manual for detailed disassembly instructions.

3.1. Pre-Installation Steps

1. **Power Off:** Shut down your laptop completely and disconnect the AC adapter.
2. **Remove Battery:** If your laptop has a removable battery, remove it.
3. **Prepare Workspace:** Work on a clean, flat, and well-lit surface. Use an anti-static mat if available.
4. **Gather Tools:** You will typically need a small Phillips head screwdriver, a thin plastic prying tool (spudger), and possibly tweezers.

3.2. Screen Removal

1. **Remove Bezel Screws:** Carefully locate and remove any screws securing the plastic screen bezel. These are often hidden under rubber caps.
2. **Pry Off Bezel:** Using a plastic prying tool, gently separate the plastic bezel from the LCD assembly. Work slowly around the edges to avoid breaking plastic clips.
3. **Unscrew Old Screen:** Once the bezel is removed, you will see the old LCD panel secured by screws to the metal mounting brackets. Remove these screws.
4. **Lay Screen Down:** Carefully lay the old screen face-down on the keyboard.
5. **Disconnect Cable:** Gently peel back any tape securing the video cable connector to the back of the old screen. Carefully disconnect the video cable by pulling it straight out from the connector. Do not pull on the wires.

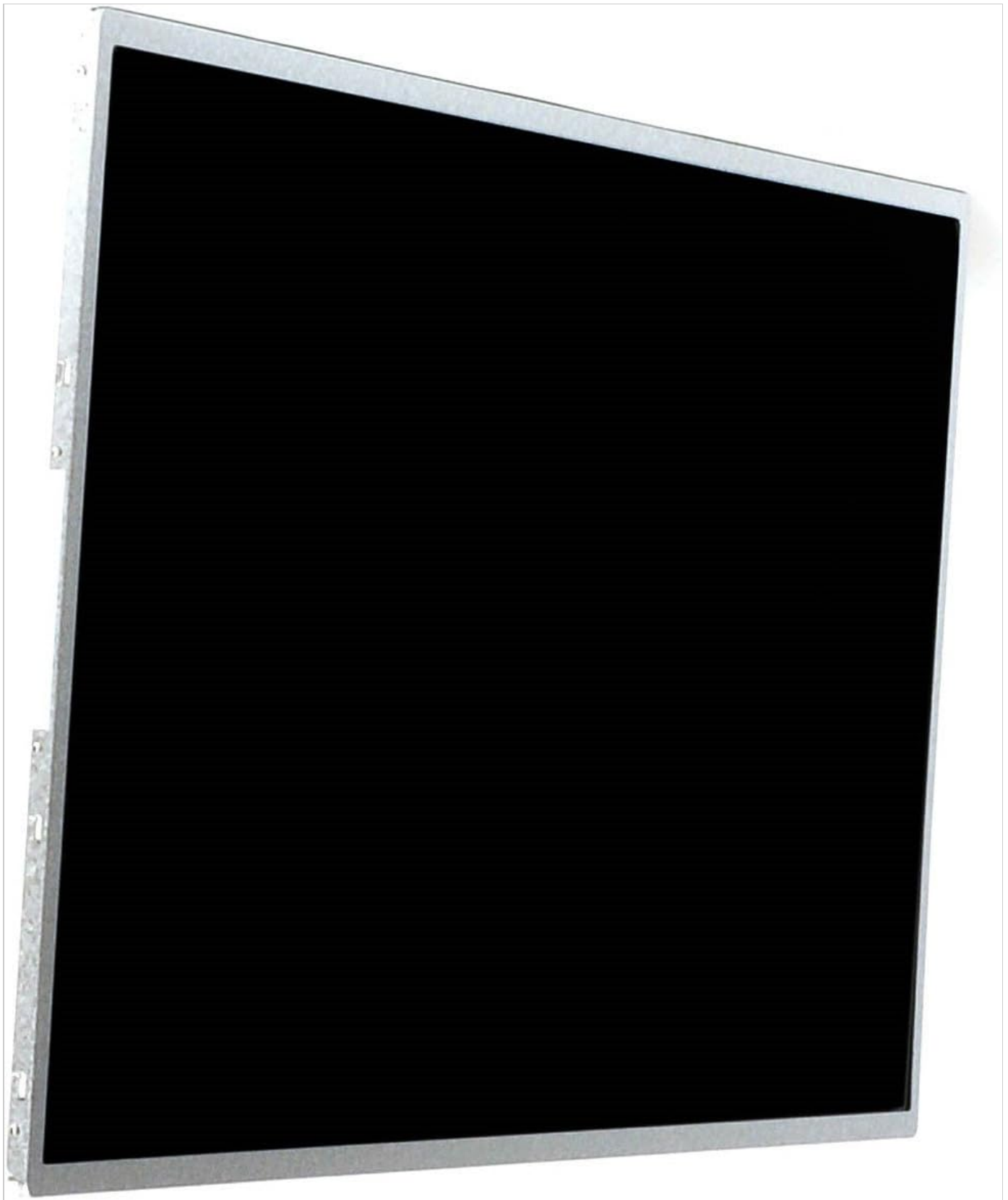


Figure 2: Angled view of the replacement LCD screen, highlighting its thin profile and mounting tabs.

3.3. Screen Installation

1. **Connect New Screen:** Take the new replacement screen and carefully connect the video cable to the connector on the back of the screen. Ensure it is fully seated and secure it with tape if present.
2. **Mount New Screen:** Position the new screen within the laptop lid and secure it with the screws previously removed from the old screen's mounting brackets.
3. **Replace Bezel:** Carefully re-attach the plastic screen bezel, ensuring all clips snap into place. Replace any screws that secure the bezel.

4. **Reinstall Battery & Power:** Reinstall the laptop battery (if removed) and connect the AC adapter.

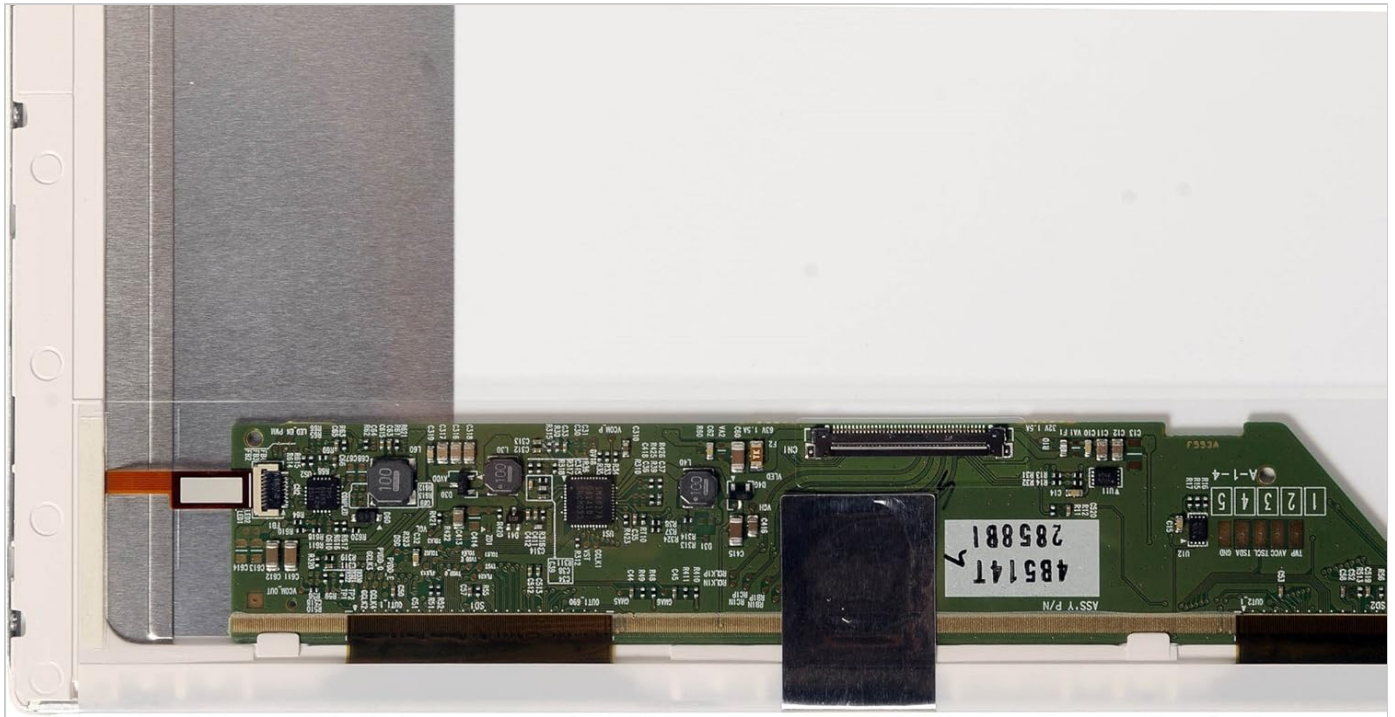


Figure 3: Back view of the replacement LCD screen, showing the video connector and control board. Ensure the video cable is securely attached here.

4. OPERATING CHECK

After installation, perform the following checks:

1. **Power On:** Power on your laptop. The screen should display the boot-up sequence.
2. **Check Display:** Verify that the display is clear, bright, and free of flickering, dead pixels, or color distortions.
3. **Adjust Settings:** If necessary, adjust display brightness and resolution settings through your operating system's display preferences. The native resolution for this screen is typically 1366x768.

5. MAINTENANCE

To ensure the longevity and optimal performance of your LCD screen:

- **Cleaning:** Use a soft, lint-free cloth specifically designed for electronics. Lightly dampen the cloth with water or a screen-cleaning solution (do not spray directly onto the screen). Gently wipe the screen to remove dust and smudges.
- **Avoid Pressure:** Do not press firmly on the screen surface, as this can damage the LCD panel.
- **Protect from Impact:** Avoid dropping or subjecting the laptop to impacts that could damage the screen.
- **Temperature:** Do not expose the screen to extreme temperatures or direct sunlight for extended periods.

6. TROUBLESHOOTING

If you encounter issues after installation, try the following:

- **No Display:**
 - Ensure the video cable is securely connected to both the screen and the laptop's motherboard.
 - Verify the laptop is receiving power and is turned on.
 - Try connecting an external monitor to confirm the laptop's graphics card is functioning.

- **Flickering or Intermittent Display:**
 - Check the video cable connection for looseness or damage.
 - Ensure the screen is properly seated in its frame and not under undue pressure.
- **Dead Pixels or Lines:**
 - A few dead or stuck pixels are sometimes considered within manufacturing tolerances for LCD panels. If the issue is severe, contact your vendor.
- **Incorrect Colors or Resolution:**
 - Update your laptop's graphics drivers.
 - Adjust display settings in your operating system to the native resolution (1366x768) and color depth.

7. SPECIFICATIONS

Screen Display Size	15.6 Inches
Resolution	WXGA HD (1366 x 768)
Technology	LED Backlight
Item Model Number	LED-1366-768-G-40-15.6-EE9011
Item Weight	11.2 ounces
Product Dimensions (LxWxH)	17.5 x 10.5 x 1.5 inches
Manufacturer	Generic
Compatibility	Emachines E528-2325 Laptop

8. WARRANTY & SUPPORT

This product is typically covered by a limited warranty against manufacturing defects. Please refer to the specific warranty terms provided by your retailer or the product's seller at the time of purchase. For technical support or warranty claims, please contact the vendor from whom you purchased this replacement screen.

Keep your purchase receipt and any packaging materials for warranty purposes.

