

SKF 46305

SKF Scotseal Classic Seal - 46305 Instruction Manual

MODEL: 46305

Introduction

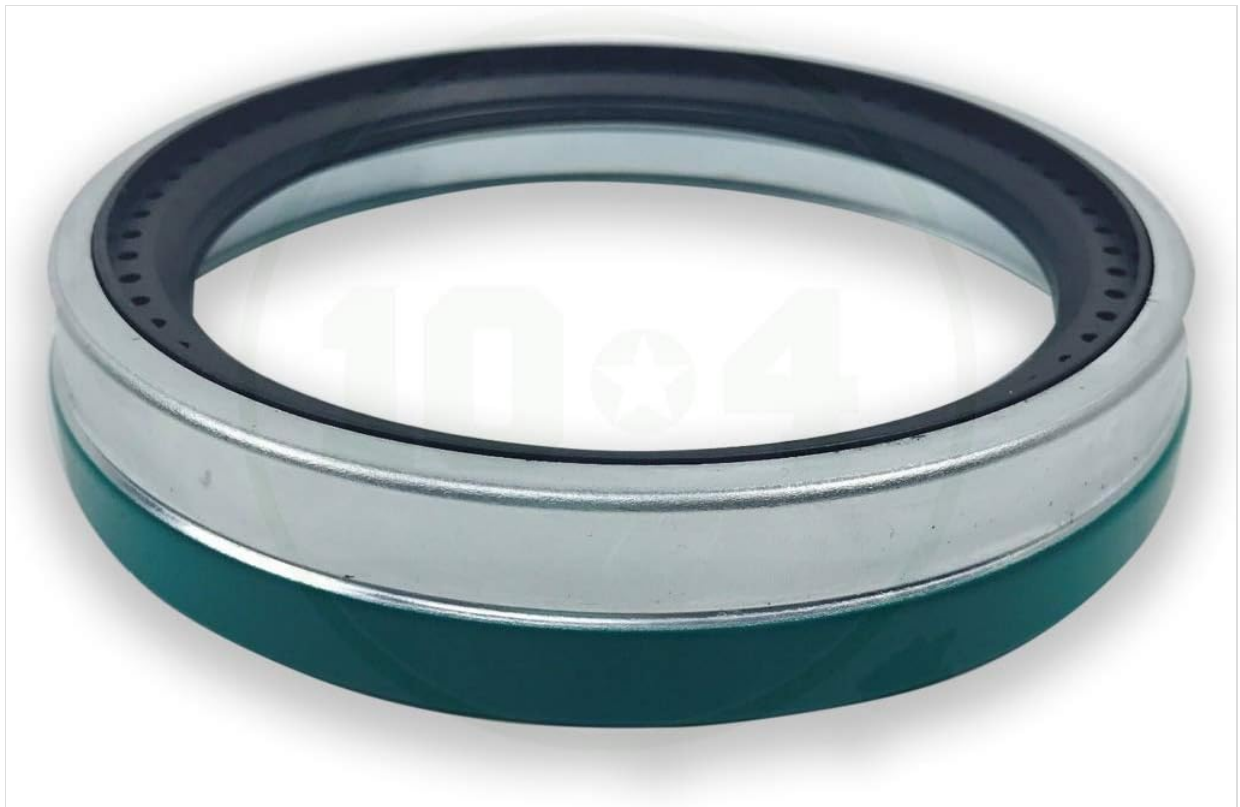
This document provides essential information for the installation, operation, and maintenance of the SKF Scotseal Classic Seal, model 46305. Adherence to these instructions is crucial for ensuring the seal's proper function and longevity in automotive applications.

Product Overview

The SKF Scotseal Classic Seal 46305 is an automotive axle shaft seal designed for specific vehicle applications. It is engineered to prevent lubricant leakage and protect bearings from contaminants, contributing to the overall reliability of the vehicle's axle system.



This image displays the SKF Scotseal Classic Seal, model 46305, still within its original packaging. The packaging indicates 'Truck wheel seal' and includes product identification numbers and a QR code for additional information. The UPC is 0085311036368. For more information, scan the QR code or visit <http://QRS.LY/GV3HPRE>.



A side profile view of the SKF Scotseal Classic Seal 46305, highlighting the multi-component design with its metallic outer casing and internal rubber sealing elements.



An overhead view of the SKF Scotseal Classic Seal 46305, clearly showing the 'BEARING SIDE' inscription and the model number '46305' stamped on the metallic ring.



An angled top-down perspective of the SKF Scotseal Classic Seal 46305, providing a clearer view of its circular structure and stamped markings.



This image shows the underside of the SKF Scotseal Classic Seal 46305, revealing the internal rubber sealing lip and the textured surface designed for optimal sealing performance.

Installation Guidelines

Proper installation is critical for the performance and lifespan of the SKF Scotseal Classic Seal. Refer to the vehicle manufacturer's service manual for specific procedures and torque specifications relevant to your vehicle model.

- Ensure the sealing surfaces on the axle and hub are clean and free from burrs or damage.
- Apply a thin layer of appropriate lubricant to the seal's inner diameter and the axle shaft to aid installation and prevent initial dry running.
- Use a dedicated seal installation tool to press the seal squarely into its housing. Avoid using hammers or sharp objects directly on the seal, as this can cause damage.
- Verify that the seal is seated correctly and evenly in the bore.
- After installation, check for any signs of misalignment or damage before reassembling other components.

For detailed technical instructions, SKF recommends consulting their technical documentation, often available via QR codes on packaging or their official website. A general technical bulletin may be found at [SKF Technical Information](#).

Operation

Once correctly installed, the SKF Scotseal Classic Seal operates passively to maintain a barrier against contaminants and retain lubrication within the axle assembly. No user intervention is required during normal operation. Regular inspections during vehicle maintenance are recommended to detect any signs of wear or leakage.

Maintenance and Inspection

The SKF Scotseal Classic Seal is designed for long-term performance with minimal maintenance. However, periodic inspection is recommended as part of routine vehicle servicing.

- During wheel or brake service, visually inspect the seal for any signs of lubricant leakage, cracking, or physical damage.
- If leakage or damage is observed, the seal should be replaced immediately to prevent further component damage.
- Ensure that the correct type and amount of lubricant are used in the axle assembly as specified by the vehicle manufacturer.

Troubleshooting

Most issues related to axle seals stem from improper installation or extreme operating conditions.

- **Lubricant Leakage:** If lubricant leakage occurs shortly after installation, it often indicates improper seating of the seal, damage during installation, or a damaged sealing surface on the axle or hub. Re-inspect the installation and replace the seal if necessary.
- **Premature Wear:** Excessive heat, abrasive contaminants, or incorrect lubricant can lead to premature seal wear. Ensure proper lubrication and address any issues with bearing condition or contamination sources.

If problems persist, consult a qualified automotive technician.

Product Specifications

Feature	Detail
Model Number	46305
Brand	SKF
Item Weight	13.3 ounces
Product Dimensions	7.13 x 7.13 x 1.38 inches
Manufacturer Part Number	46305
Position	Center
UPC	0085311036368

Warranty and Support





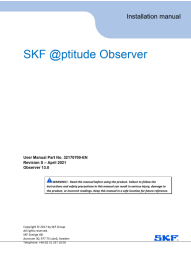
For warranty information and technical support regarding the SKF Scotseal Classic Seal 46305, please refer

to the official SKF website or contact your authorized SKF distributor.

SKF products are designed to meet high-quality standards. For further assistance, visit the [SKF Store on Amazon](#) or the official SKF website.

© 2023 SKF. All rights reserved.

Related Documents - 46305

	<p>SKF Catálogo: Rodamientos y Sellos para Vehículos Pesados Componentes de Eje</p> <p>Descubra el catálogo SKF de rodamientos, sellos Scotseal®, tapas de cubo y kits de reacondicionamiento para camiones, remolques y autobuses. Mejore el rendimiento y la durabilidad de su flota pesada.</p>
	<p>SKF Изделия для Технического Обслуживания и Смазочные Материалы</p> <p>Каталог SKF, посвященный изделиям и материалам для технического обслуживания подшипников. Охватывает монтаж, демонтаж, смазывание, выверку и мониторинг состояния для продления срока службы подшипников.</p>
	<p>SKF TKSA 51 Shaft Alignment Tool - User Manual and Specifications</p> <p>Comprehensive user manual for the SKF TKSA 51 shaft alignment tool, detailing its features, technical specifications, setup, operation, and maintenance. Learn how to perform precise shaft alignments for industrial machinery.</p>
	<p>SKF TKBA 40 Belt Alignment Tool User Manual</p> <p>This user manual provides comprehensive instructions for operating the SKF TKBA 40 Belt Alignment Tool, detailing its technical specifications, application range, troubleshooting, and maintenance procedures.</p>
	<p>SKF @ptitude Observer 13.0 Installation Manual</p> <p>Comprehensive installation guide for SKF @ptitude Observer 13.0 software, detailing system requirements, software and SQL Server Express installation, database setup, monitor service configuration, and network settings for condition monitoring.</p>

SKF Dynamic Motor Analyzer
EXP4000



[SKF Dynamic Motor Analyzer EXP4000 User Manual](#)

User manual for the SKF Dynamic Motor Analyzer EXP4000, detailing its features, intended use, software license agreement, and support information.