



Manuals.plus /

- › Philips Sonicare /
- › Philips Sonicare HX6053/64 Sensitive Replacement Toothbrush Heads User Manual

Philips Sonicare HX6053/64

Philips Sonicare HX6053/64 Sensitive Replacement Toothbrush Heads User Manual

1. PRODUCT OVERVIEW

The Philips Sonicare HX6053/64 Sensitive Replacement Toothbrush Heads are uniquely designed with ultra-soft bristles for gentle yet effective cleaning. These brush heads are ideal for individuals with sensitive teeth and gums, providing less pressure while effectively removing plaque. Each head features reminder bristles that fade over time, indicating when a replacement is due, typically every 3 months for optimal performance.

Ultra soft bristles for sensitive teeth and gums

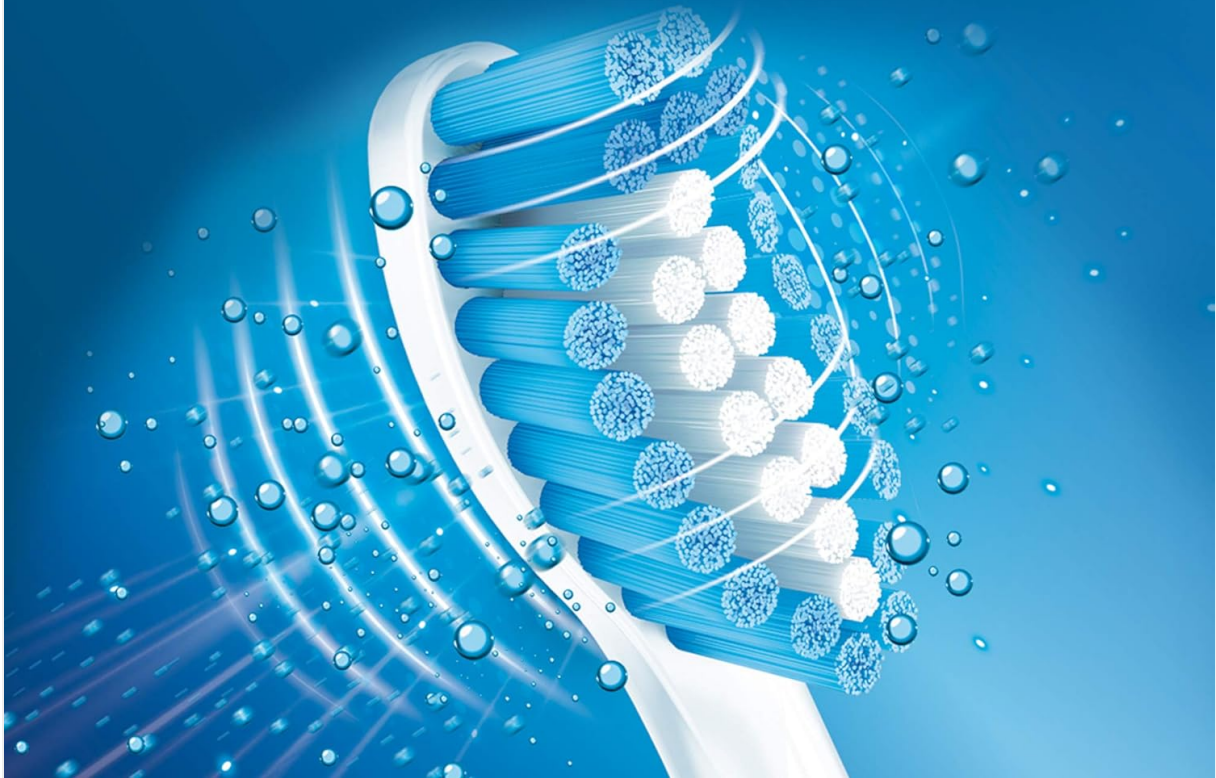


Image: Close-up of a Philips Sonicare Sensitive brush head, highlighting the ultra-soft bristles designed for sensitive teeth and gums.

2. KEY FEATURES

- **Ultra-Soft Bristles:** Specifically designed to be gentle on sensitive teeth and gums, reducing pressure during brushing.
- **Contoured Bristle Field:** The bristles are shaped to fit the natural contours of your teeth for comprehensive cleaning.
- **Reminder Bristles:** Blue bristles fade to white over approximately 3 months, signaling the need for a replacement.
- **Click-on Design:** Easy to attach and detach from all compatible Philips Sonicare click-on handles.
- **Genuine Philips Sonicare Product:** Ensures compatibility and optimal performance with your Sonicare toothbrush.

Color-fade bristles



**Let you
know when
to replace**

Image: A Philips Sonicare Sensitive brush head with a close-up on the blue reminder bristles, which fade to indicate replacement time.

3. INSTALLATION AND REPLACEMENT

3.1 Attaching the Brush Head

1. Align the brush head with the metal shaft on your Philips Sonicare toothbrush handle.
2. Push the brush head down firmly until it clicks into place. Ensure it is securely attached.

3.2 Detaching the Brush Head

1. Grip the brush head firmly and pull it straight up from the toothbrush handle.
2. Dispose of the used brush head responsibly.

3.3 When to Replace

It is recommended to replace your Philips Sonicare brush head every 3 months, or sooner if the reminder bristles fade completely or if the bristles become splayed. Regular replacement ensures optimal cleaning performance and hygiene.

Fits all
Philips Sonicare
**click-on
handles**



Image: A Philips Sonicare Sensitive brush head being clicked onto a Philips Sonicare toothbrush handle, demonstrating the easy attachment process.

4. USAGE

Apply a small amount of toothpaste to the brush head. Place the brush head against your teeth at a slight angle towards the gum line. Turn on your Philips Sonicare toothbrush and gently guide the brush head across all surfaces of your teeth. Allow the sonic vibrations to do the cleaning. Do not scrub vigorously. The toothbrush will typically have a built-in timer to ensure you brush for the recommended duration (e.g., 2 minutes, divided into 30-second quadrants).

5. MAINTENANCE

- After each use, rinse the brush head thoroughly under running water to remove any toothpaste residue and debris.
- Allow the brush head to air dry in an upright position.
- Store the toothbrush head in a dry place.
- The included protective cap can be used for hygienic storage when traveling or not in use.

6. SPECIFICATIONS

Model Number	HX6053/64
Brand	Philips Sonicare
Color	White
Size	1 Count (Pack of 3)
Material	Nylon
GTIN/UPC	075020028440
Product Dimensions	0.6 x 0.25 x 2.8 inches; 1.45 ounces

7. SAFETY INFORMATION

After use, store the toothbrush head in a dry place to prevent bacterial growth. Do not use if bristles are damaged or splayed, as this may cause gum irritation or ineffective cleaning. Keep out of reach of children.

8. OFFICIAL PRODUCT VIDEOS

Use Genuine Philips Sonicare brush heads

Your browser does not support the video tag.

Video: This official Philips Sonicare video demonstrates the importance of using genuine Philips Sonicare brush heads for optimal cleaning, gum care, or whitening, showing various brush head types and their benefits.

9. ADDITIONAL INFORMATION

This product is verified by Transparency. Each item has a unique code that is verified before shipping, ensuring authenticity.