

Manuals+

[Q & A](#) | [Deep Search](#) | [Upload](#)

[manuals.plus](#) /

› [Artograph](#) /

› [Artograph Prism Art Projector User Manual](#)

Artograph 25090

Artograph Prism Art Projector User Manual

Model: 25090

PRODUCT OVERVIEW

The Artograph Prism Art Projector is a high-quality, single lens, tabletop opaque projector designed for convenient projection of various art forms, including artwork, designs, patterns, prints, and line drawings, onto a vertical surface. Its reversible lens allows for a wide projection range, from 80% reduction up to 20 times enlargement, providing full-color reproduction. The projector features 500-Watts of photo-quality lighting (two 250-Watt bulbs) for a bright and clear image. The 7" x 7" (178 x 178 mm) top-loading area simplifies the placement of your original material. Magnetic door latches and a spring clip ensure your original stays flat and secure during projection. For optimal performance and to prevent overheating, the unit is fan-cooled and includes thermal overload circuit protection. A darkened room is required for maximum visibility and projection clarity.



Image: Front view of the Artograph Prism Art Projector, showcasing its compact design and lens.

PACKAGE CONTENTS

Upon unboxing, please ensure all the following components are present:

- Artograph Prism Art Projector Unit
- Two (2) 250-Watt Photo-Quality Bulbs
- 20X Lens
- Power Cord

SETUP

1. **Unpacking:** Carefully remove all components from the packaging. Retain packaging for future storage or transport.
2. **Placement:** Place the projector on a stable, flat surface. Ensure there is adequate space for projection onto a vertical surface (wall or easel). A darkened room is essential for optimal projection quality.



Image: A user setting up the Artograph Prism Art Projector next to an easel, demonstrating typical usage.

3. **Lens Installation:** The 20X lens is reversible. Insert the lens into the projector's front opening. The orientation of the lens affects the projection range (reduction or enlargement).



Image: Close-up view of the projector's lens, highlighting its design.

4. **Power Connection:** Connect the power cord to the projector's power inlet and then to a standard electrical outlet.



Image: Rear view of the projector, showing the power cord connection point and cooling fan.

OPERATING INSTRUCTIONS

1. **Power On:** Locate the power switch on the side of the projector and turn it to the 'ON' position.

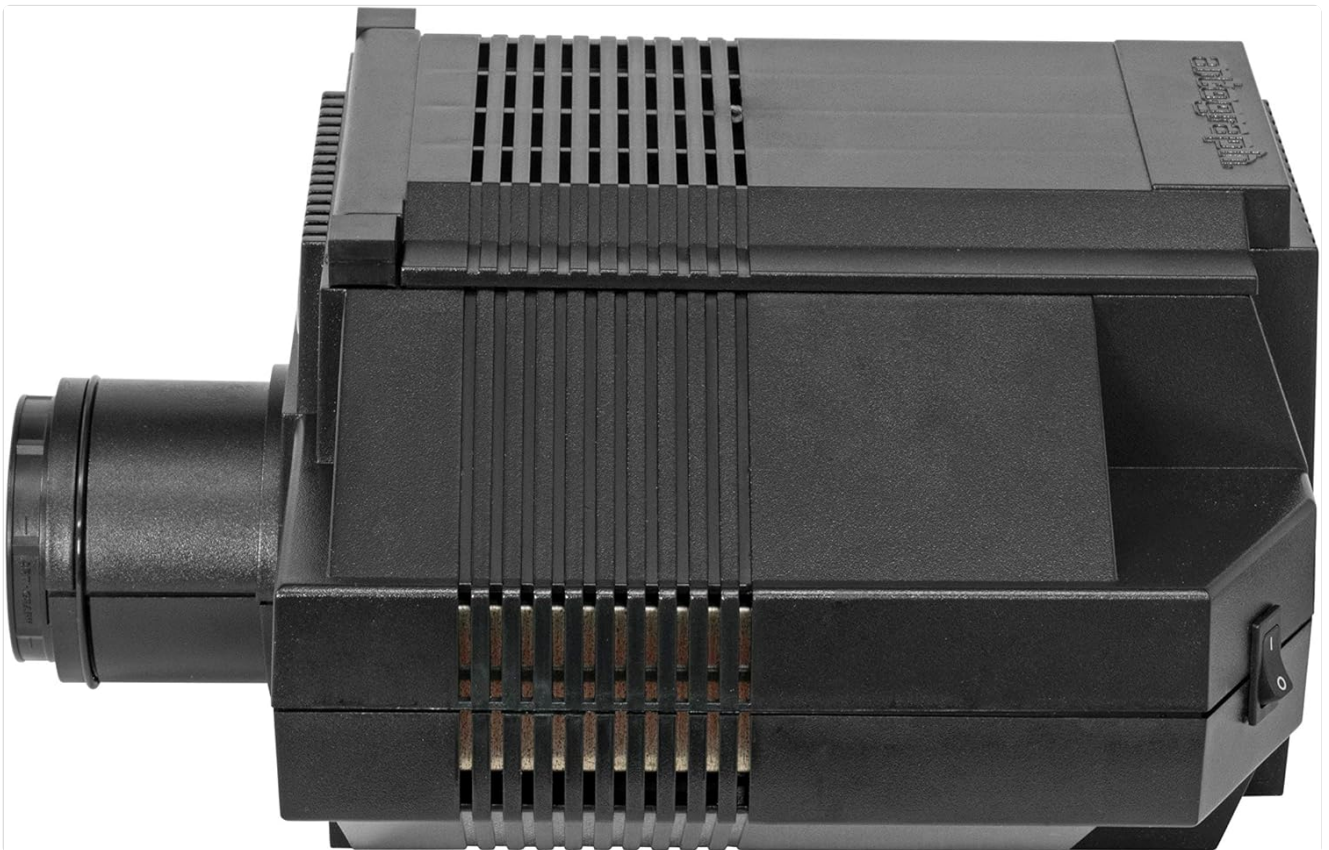


Image: Side view of the projector, highlighting the power switch location.

2. **Loading Original:** Open the top-loading area. Place your artwork, design, or image face down onto the 7" x 7" glass-covered copy area. Use the magnetic door latches and spring clip to hold the original flat and secure.



Image: The top-loading area of the projector shown open, ready for placing original artwork.

3. **Projection:** The image from your original will be projected onto the vertical surface.



Image: The projector in operation, displaying a clear image of a flower on a wall.

4. **Adjusting Size:** Move the projector closer to the projection surface to reduce the image size (up to 80% reduction). Move it further away to enlarge the image (up to 20 times enlargement).
5. **Focusing:** Adjust the lens to achieve a sharp, clear image on the projection surface.
6. **Vertical Projection (with accessories):** For tabletop projection, optional accessories are available to allow for vertical projection of 80% reduction and up to 4x enlargement.

Your browser does not support the video tag.

Video: An overview of the Artograph Prism Art Projector's features, including lens reversibility, top-loading area, and fan-cooled operation.

This video demonstrates the product's capabilities and key components.

MAINTENANCE

- **Cleaning:** Regularly wipe the exterior of the projector with a soft, dry cloth. For the glass copy area and lens, use a lens cleaning cloth and appropriate cleaning solution to avoid scratches.
- **Bulb Replacement:** The 500-Watt photo-quality bulbs have an estimated lifespan of 20 hours. When a bulb needs replacement, ensure the projector is unplugged and cooled down. Refer to the bulb replacement diagram in the original user guide (PDF link provided in product details) for detailed instructions.
- **Storage:** When not in use, store the projector in a cool, dry place, preferably in its original packaging, to protect it from dust and damage.

TROUBLESHOOTING

Problem	Possible Cause	Solution
No image projected / Projector not turning on	Power cord not securely plugged in. Power outlet is not active. Bulbs are burnt out. Thermal overload circuit activated.	Check power cord connection to projector and outlet. Test outlet with another device. Replace bulbs (refer to Maintenance section). Unplug the projector, allow it to cool for 15-30 minutes, then try again.
Projected image is dim or unclear	Room is not sufficiently dark. Lens is out of focus. Bulbs are nearing end of life or dirty. Original artwork is too faint or small.	Ensure the room is as dark as possible. Adjust the lens for focus. Clean or replace bulbs. Use originals with good contrast and appropriate size for projection.
Original artwork not staying flat	Magnetic door latches or spring clip not properly engaged.	Ensure the magnetic cover is fully closed and the spring clip is holding the original firmly against the glass.

SPECIFICATIONS

Model Number	25090
Brand	Artograph
Product Dimensions	17.5 x 17.2 x 10.2 inches
Item Weight	11 pounds
Manufacturer	Artograph Original Prism
Illumination	500 Watts (2 x 250-Watt photo lamps)
Copy Area	7" x 7" (178 x 178 mm) top-loading
Enlargement/Reduction	80% reduction up to 20 times enlargement

Lens	Reversible 20X lens
Cooling	Fan cooled with thermal overload circuit protection
Special Feature	Portable, Electronic
Connectivity Technology	VGA (as per product specifications, though typically not applicable to opaque projectors)
Display Resolution	500W (as per product specifications)
Display Resolution Maximum	3840 x 2160 (as per product specifications, though typically not applicable to opaque projectors)

WARRANTY AND SUPPORT

The Artograph Prism Art Projector comes with a **1-year warranty** from the date of purchase. Additionally, Artograph provides **Lifetime Technical Support** for this product.

For warranty claims, technical assistance, or further inquiries, please contact Artograph customer service. Refer to the official Artograph website or the original product packaging for contact details.

A detailed User Guide in PDF format is also available for download: [Artograph Prism Projector User Guide \(PDF\)](#)