

Manuals.plus /

- › DEWALT /
- › DEWALT 20V MAX Reciprocating Saw User Manual

DEWALT DCS380B

DEWALT 20V MAX Reciprocating Saw User Manual

MODEL: DCS380B

Product Overview

The DEWALT 20V MAX* Reciprocating Saw (DCS380B) is a versatile and powerful cordless tool designed for a wide range of cutting tasks. Its robust design and advanced features ensure efficient and precise operation.



This image shows the DEWALT 20V MAX Reciprocating Saw, a powerful cordless tool designed for various cutting applications.

Setup and Assembly

Blade Installation and Removal

The DCS380B features a keyless lever-action 4-position blade clamp, allowing for quick and tool-free blade changes. This design also provides increased positional versatility, including the ability to perform flush cuts.



4-POSITION BLADE CLAMP

ALLOWS FOR FLUSH CUTTING

The keyless lever-action 4-position blade clamp allows for quick and easy blade changes and enables flush cutting.



This image highlights the 20V MAX blade clamp, designed for secure and versatile blade positioning.

Battery Installation

This reciprocating saw is a bare tool only, meaning the battery and charger are sold separately. Ensure you use compatible DEWALT 20V MAX Lithium Ion batteries for optimal performance. To install the battery, align it with the tool's battery port and slide it in until it clicks securely into place. To remove, press the battery release button and slide the battery out.

Operation Guidelines

Variable Speed Trigger

The saw is equipped with a variable speed trigger, allowing you to control the cutting speed from 0 to 3000 strokes per minute (SPM). This feature provides increased blade control and enables you to match the speed to the specific application and material being cut.



This diagram points out the variable speed trigger, which allows users to adjust the cutting speed from 0 to 3000 strokes per minute for optimal control.



VARIABLE SPEED TRIGGER

WITH 0-3,000 SPM

A user demonstrates the application of the variable speed trigger for precise cutting, highlighting the 'Tool Only' nature of the product.

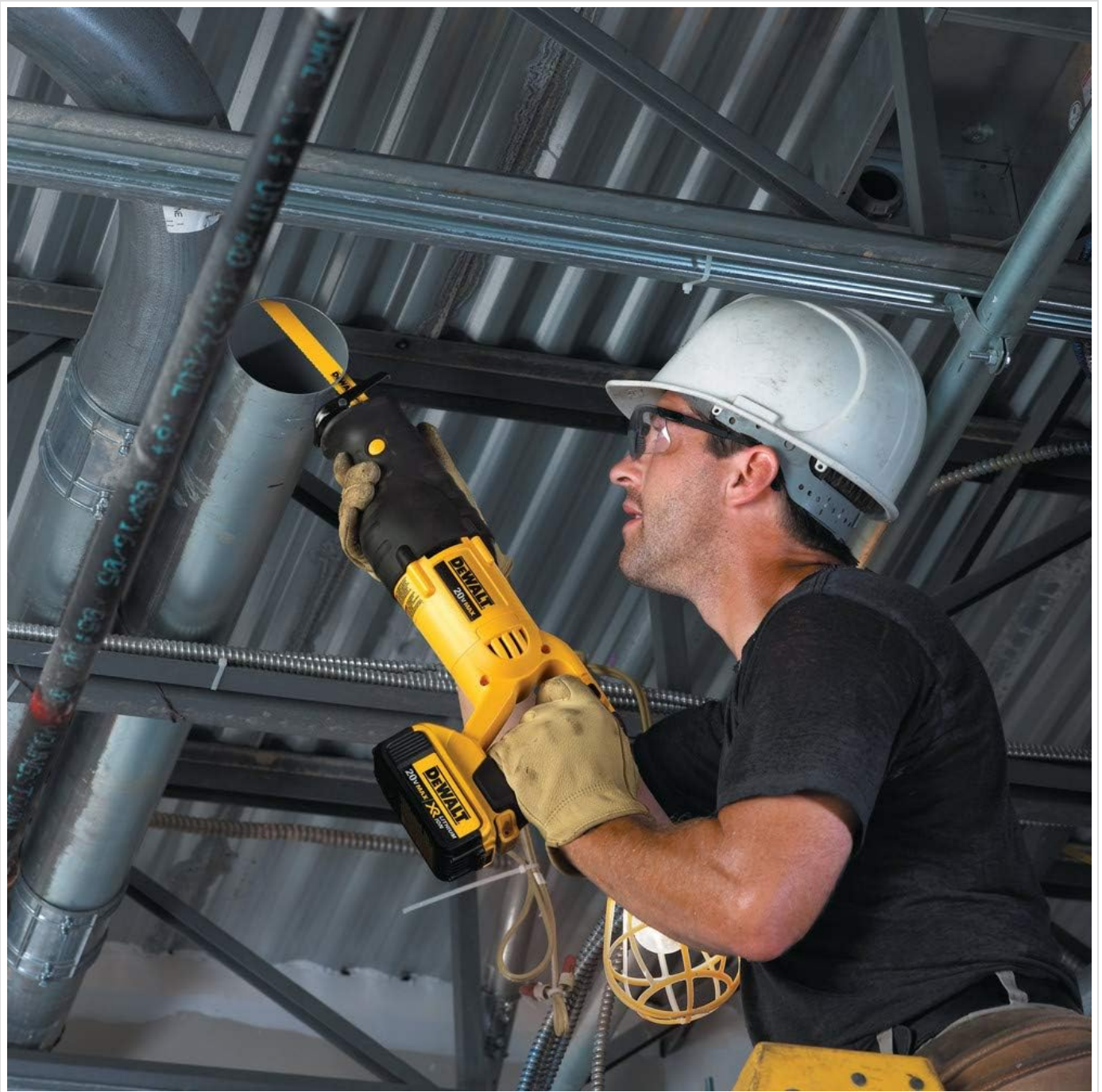
Pivoting Shoe

The pivoting shoe provides leverage during cutting, which helps to extend blade life and allows for better depth-of-cut control. This feature is particularly useful when cutting through various materials or in awkward positions.



1-1/8 IN. STROKE
FOR FAST AND EFFICIENT CUTTING

The 1-1/8 inch stroke length of the blade ensures fast and efficient cutting.



A worker uses the reciprocating saw to cut metal ductwork, illustrating how the pivoting shoe provides leverage and extends blade life.

Cutting Applications

The DEWALT 20V MAX Reciprocating Saw is suitable for cutting various materials, including wood, metal, and plastic, depending on the blade used. Always select the appropriate blade for the material to ensure efficient cutting and safety.



This image shows the DEWALT reciprocating saw in action, cutting through a wooden beam, demonstrating its capability for various materials.

Care and Maintenance

To ensure the longevity and optimal performance of your DEWALT reciprocating saw, regular care and maintenance are essential.

Cleaning

After each use, clean the tool to remove dust, debris, and any residue from cutting. Use a dry cloth or a soft brush. Do not use harsh chemicals or abrasive cleaners. Ensure the ventilation openings are clear to prevent overheating.

Shaft Durability

The saw features a double oil sealed shaft, which resists contamination and significantly increases the tool's overall durability, reducing the need for frequent internal maintenance.

Storage

Store the tool in a dry, secure location away from direct sunlight and extreme temperatures. If storing for extended periods, remove the battery.

Troubleshooting Common Issues

If you encounter issues with your DEWALT 20V MAX Reciprocating Saw, refer to the following common problems and solutions:

- **Saw not starting:** Ensure the battery is fully charged and properly inserted. Check if the trigger lock-off button is disengaged.
- **Reduced cutting performance:** The blade might be dull or incorrect for the material. Replace the blade or ensure it's suitable for the task. Check if the battery charge is low.
- **Excessive vibration or noise:** Ensure the blade is securely installed. Check for any loose parts or damage to the tool.
- **Overheating:** Allow the tool to cool down. Ensure ventilation openings are not blocked. Avoid continuous heavy-duty use without breaks.

For persistent issues, contact DEWALT customer support or an authorized service center.

Technical Specifications

Attribute	Value
Brand	DEWALT
Model Number	DCS380B
Power Source	Battery Powered
Voltage	20 Volts
Speed	3000 RPM (Strokes Per Minute)
Blade Length	8 Inches
Stroke Length	1-1/8 Inches
Item Weight	5.3 pounds (2.41 Kilograms)
Blade Material	High Speed Steel
Handle Material	Rubber
Battery Cell Type	Lithium Ion
Included Components	DCS380B (Bare Tool)

Warranty Information

The DEWALT 20V MAX Reciprocating Saw (DCS380B) comes with a **3 Year Limited Warranty**. This warranty covers defects in materials and workmanship. For full details regarding warranty terms, conditions, and how to make a claim, please refer to the official DEWALT warranty documentation or contact DEWALT customer service.

Product Support

For additional information, detailed instructions, or assistance with your DEWALT 20V MAX Reciprocating Saw, please utilize the following resources:

- **Official User Manual (PDF):** Download PDF User Manual
- **DEWALT Customer Service:** Visit the official DEWALT website or contact their customer support line for technical assistance, service center locations, and parts information.