

## Mopar 4461032

# Mopar Direct Clutch Spring Instruction Manual

Part Number: 4461032

Brand: Mopar

## 1. INTRODUCTION AND OVERVIEW

This manual provides essential information for the proper understanding and context of the Mopar Direct Clutch Spring, Part Number 4461032. This component is an original equipment manufacturer (OEM) part designed to meet the precise specifications of your vehicle's automatic transmission system. It is crucial for the correct operation of the direct clutch within the transmission.

The information contained herein is for informational purposes and should supplement, not replace, the detailed service manual specific to your vehicle's make and model. Installation of this part typically requires specialized tools and expertise.

## 2. PRODUCT DESCRIPTION

The Mopar Direct Clutch Spring (Part Number 4461032) is a critical component within the automatic transmission's direct clutch assembly. It is manufactured to meet stringent OEM specifications for fit, form, and function, ensuring reliable operation and compatibility with your specific vehicle.



Image: The Mopar Direct Clutch Spring, a circular metal component.



Image: Mopar Genuine Parts & Accessories packaging, showing the part number 04461032 and 'Made in USA'.

### Key Features:

- Mopar OEM part designed for specific vehicle fitment.
- Identified as a 'SPRING DIRECT CLUTCH'.
- Part Number: 4461032.
- Manufactured to meet precise specifications for fit, form, and function.

## 3. SETUP AND INSTALLATION

---

Installation of the Direct Clutch Spring requires specialized knowledge, tools, and a clean working environment. It is highly recommended that this component be installed by a certified automotive technician with experience in automatic transmission repair. Improper installation can lead to transmission malfunction, damage, and potential safety hazards.

This spring is an internal component of the direct clutch assembly within the automatic transmission. Accessing and replacing it involves significant disassembly of the transmission unit. Always refer to your vehicle's specific service manual for detailed transmission disassembly, reassembly, and torque specifications.

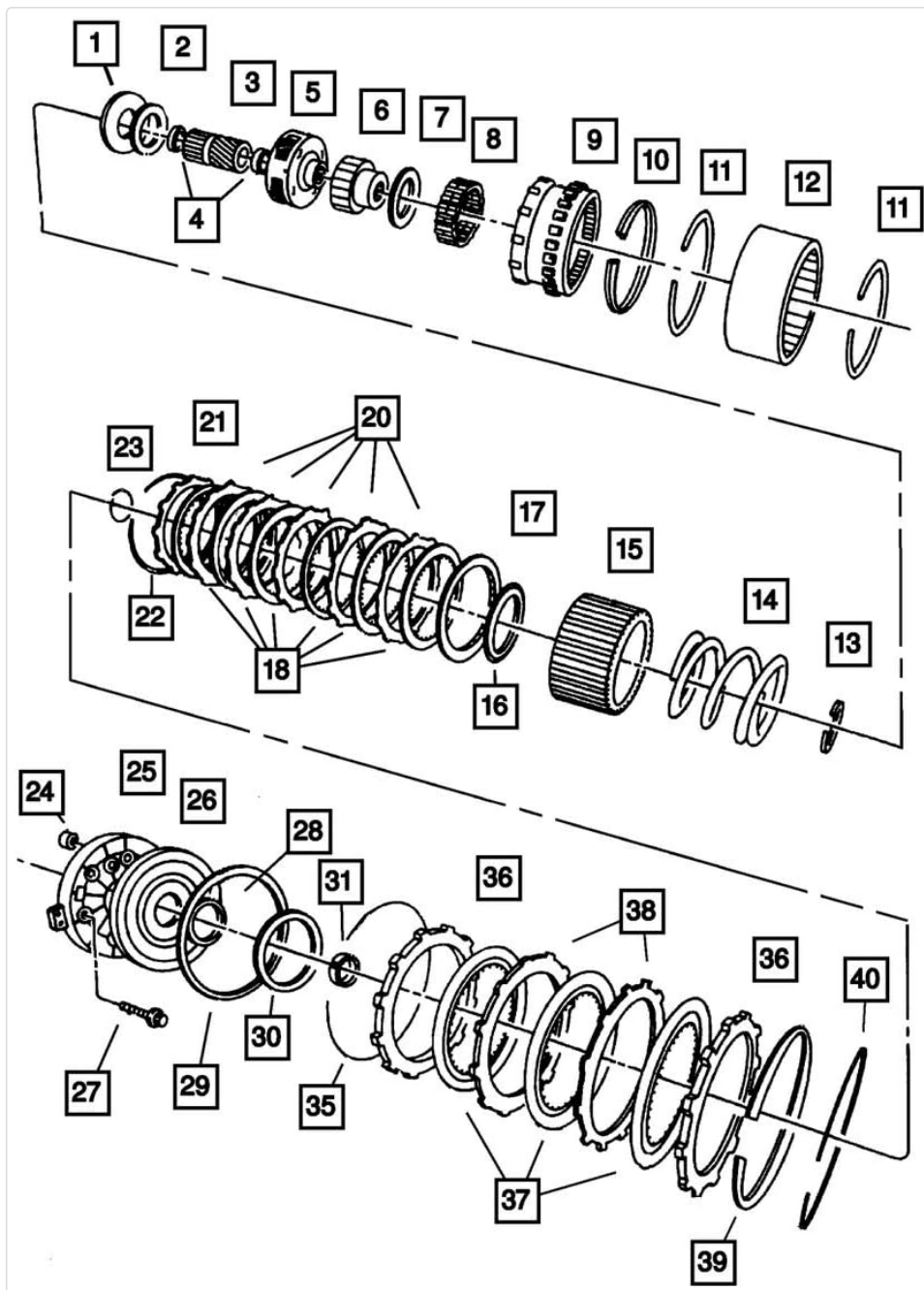


Image: An exploded diagram illustrating various components of a transmission assembly, providing context for where the clutch spring would be located.

### General Installation Considerations:

- Ensure the transmission fluid is drained and the transmission is safely removed from the vehicle.
- Carefully disassemble the transmission case and direct clutch assembly according to the vehicle's service manual.
- Identify the location of the old direct clutch spring.
- Inspect surrounding components for wear or damage and replace as necessary.
- Install the new Mopar Direct Clutch Spring, ensuring it is correctly seated and oriented.
- Reassemble the direct clutch assembly and transmission, adhering to all torque specifications and sealing procedures.
- Refill the transmission with the correct type and amount of fluid.
- Perform a functional check of the transmission after reinstallation.

## 4. OPERATING PRINCIPLE

Once properly installed, the Direct Clutch Spring functions as an integral part of the direct clutch pack within the automatic transmission. Its primary role is to provide the necessary spring tension for the proper engagement and disengagement of the direct clutch. This precise tension is crucial for smooth and timely gear shifts, efficient power transfer from the engine to the wheels, and overall transmission performance.

The direct clutch is responsible for engaging specific gear ratios, and the spring ensures that the clutch plates are properly separated when disengaged and apply the correct pressure when engaged, preventing slippage or harsh engagement.

## 5. MAINTENANCE

The Mopar Direct Clutch Spring itself does not require routine maintenance or lubrication after installation. It is designed to operate maintenance-free for the lifespan of the transmission under normal operating conditions. However, during any transmission service, overhaul, or repair that involves disassembling the direct clutch assembly, it is advisable to inspect the spring for signs of wear, fatigue, cracks, deformities, or corrosion. If any of these conditions are observed, the spring should be replaced to ensure continued optimal transmission performance.

## 6. TROUBLESHOOTING

A faulty direct clutch spring can contribute to various transmission performance issues. However, symptoms are rarely specific to just the spring, as many other components can cause similar problems. Diagnosis should always be performed by a qualified technician using appropriate diagnostic tools and procedures.

### Potential Symptoms of a Failing Direct Clutch Spring (among other issues):

- Delayed or harsh engagement of certain gears.
- Slippage during acceleration in specific gears.
- Unusual noises from the transmission during shifting.
- Complete loss of certain forward or reverse gears.

If you experience any of these symptoms, it is recommended to have your vehicle inspected by a professional automotive technician immediately to prevent further damage to the transmission.

## 7. SPECIFICATIONS

Specification	Detail
---------------	--------


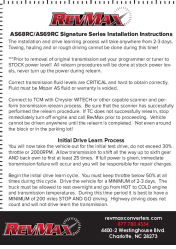
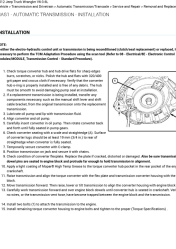

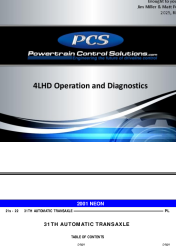

Specification	Detail
Manufacturer	Mopar
Brand	Mopar
Model	SPRING
Item Weight	1 pounds
Package Dimensions	1 x 1 x 1 inches
Item Model Number	4461032
Exterior	Machined
Manufacturer Part Number	4461032
ASIN	B007NMKTTA
Date First Available	April 29, 2024

## 8. WARRANTY INFORMATION

For specific warranty information regarding the Mopar Direct Clutch Spring (Part Number 4461032), please refer to the official Mopar warranty policy provided with your purchase or available on the official Mopar website. Warranty terms typically cover manufacturing defects and vary by region and purchase date. It is recommended to retain your proof of purchase for any warranty claims.

## 9. SUPPORT

For technical support, installation guidance, or further assistance with the Mopar Direct Clutch Spring (Part Number 4461032), please contact your authorized Mopar service center or visit the official Mopar website. When seeking support, always provide the part number and details of your vehicle to ensure accurate assistance. You can find more information about Mopar products and services at the [Mopar Store on Amazon](#).

	<p><a href="#">45RFE/545RFE Automatic Transmission Service Manual</a></p> <p>Comprehensive technical guide detailing the operation, diagnosis, testing, removal, disassembly, and assembly procedures for the 45RFE and 545RFE automatic transmissions, including detailed specifications and schematics.</p>
	<p><a href="#">RevMax AS68RC/AS69RC Signature Series Transmission Installation Instructions</a></p> <p>Step-by-step installation and drive learning process for RevMax AS68RC/AS69RC Signature Series Transmissions, including critical fluid level information and initial drive cycle procedures.</p>
	<p><a href="#">NAG1 Automatic Transmission Installation Guide for Jeep Wrangler</a></p> <p>Step-by-step instructions for installing the NAG1 automatic transmission in a 2012 Jeep Wrangler V6-3.6L, including preparation, mounting, and final checks.</p>
	<p><a href="#">Mopar 572 CID Hemi Crate Engine Installation Instructions</a></p> <p>Comprehensive installation guide for the Mopar 572 CID Hemi Crate Engine (Part Numbers P5155429 and P5155431), covering pre-installation checks, engine mounting, transmission compatibility, initial startup procedures, break-in, and torque specifications. Includes details on engine balance, cooling systems, ignition, and warranty information.</p>
	<p><a href="#">PCS 4LHD Operation and Diagnostics Guide</a></p> <p>Comprehensive guide to the operation and diagnostics of PCS 4LHD driveline control systems. Learn about PCS's engineering expertise in automotive transmission control and aftermarket products.</p>
	<p><a href="#">2001 Chrysler Neon 31TH Automatic Transaxle Service Manual</a></p> <p>Comprehensive service manual detailing the diagnosis, disassembly, assembly, specifications, and operation of the 31TH automatic transaxle for the 2001 Chrysler Neon. Includes troubleshooting and component details.</p>

AUTOMATIC TRANSMISSION  
PARTS CATALOG



- PARTES DE TRANSMISIONES AUTOMATICAS
- AUTOMATIKGETRIEBETEILE
- PIÉCES DE TRANSMISSIONS AUTOMATIQUES
- PEÇAS PARA TRANSMISSÕES AUTOMÁTICAS
- ЗАПЧАСТИ АВТОМАТИЧЕСКИХ КОРОБОК ПЕРЕДАЧ



ALTO PRODUCTS CORP.  
Altos Hwy. - Altamira - AL - 36552 - USA - www.altoproducts.com  
Tel: 251.368.7777 - Fax: 251.368.7774 - sales@altoproducts.com

[\[pdf\]](#) User Manual Catalog

Manual Transmision Automatica 6T40 Pdf 45 Diagnostics Webinar Handout NET Framework Alto2011  
website altousa images |||

AUTOMATIC TRANSMISSION PARTS CATALOG PARTES DE TRANSMISIONES  
AUTOMATICAS AUTOMATIKGETRIEBETEILE P ... 7260-076 39B 027260-098 N I  
028253W N I 027261W054 REF No. 3410571 2466283 4130761 4539121 4539122

**4461032** 4659652 Description Forward Clutch PP retainer Forward Clutch PP  
retainer - inner Forward C...

lang:en **score:10** filesize: 9.24 M page\_count: 538 document date: 2011-03-18