

## Conair 750C

# Conair InfinitiPRO Frizz Free Hair Dryer Model 750C User Manual

Model: 750C

## 1. IMPORTANT SAFETY INFORMATION

For your safety, please read all instructions carefully before using this appliance.

- Keep out of reach of children.
- Do not rinse or submerge in water.
- Keep the power plug and cord away from heated surfaces.
- Do not use a hair dryer while bathing.
- Always unplug the appliance after use.
- Do not use near water (e.g., in a bathroom, near a sink, or in a laundry tub).
- If the supply cord is damaged, it must be replaced by the manufacturer, its service agent, or similarly qualified persons in order to avoid a hazard.

## 2. PRODUCT OVERVIEW

The Conair InfinitiPRO Frizz Free Hair Dryer Model 750C is designed to provide efficient drying and styling with advanced features to reduce frizz and enhance shine.

### Key Features:

- **Professional AC Motor:** Provides powerful airflow for faster drying times.
- **Ionic Generator:** Releases ions to reduce frizz and enhance hair's natural shine.
- **Tourmaline Ceramic-Coated Grill:** Ensures even heat distribution to protect hair from damage.
- **Multiple Heat and Speed Settings:** Offers 3 heat and 2 speed settings for customized styling.
- **Cold Shot Button:** Delivers a burst of cool air to set your style in place.
- **Attachments:** Includes 2 concentrators for precise styling and a diffuser for enhancing curls and waves.

### Components:

### ADVANCED IONIC TECHNOLOGY

High voltage generator produces up to 50% more ions for enhanced manageability and frizz-free shine.

### PROFESSIONAL, LONG-LIFE MOTOR

Fast drying and up to 3x longer life.\*

### 1875 WATTS

Powerful, quick drying.

### TITANIUM CERAMIC TECHNOLOGY

Even heat protects from damage.

### 2 CONCENTRATORS

Take control for shinier looks and more volume at the roots.

### DIFFUSER

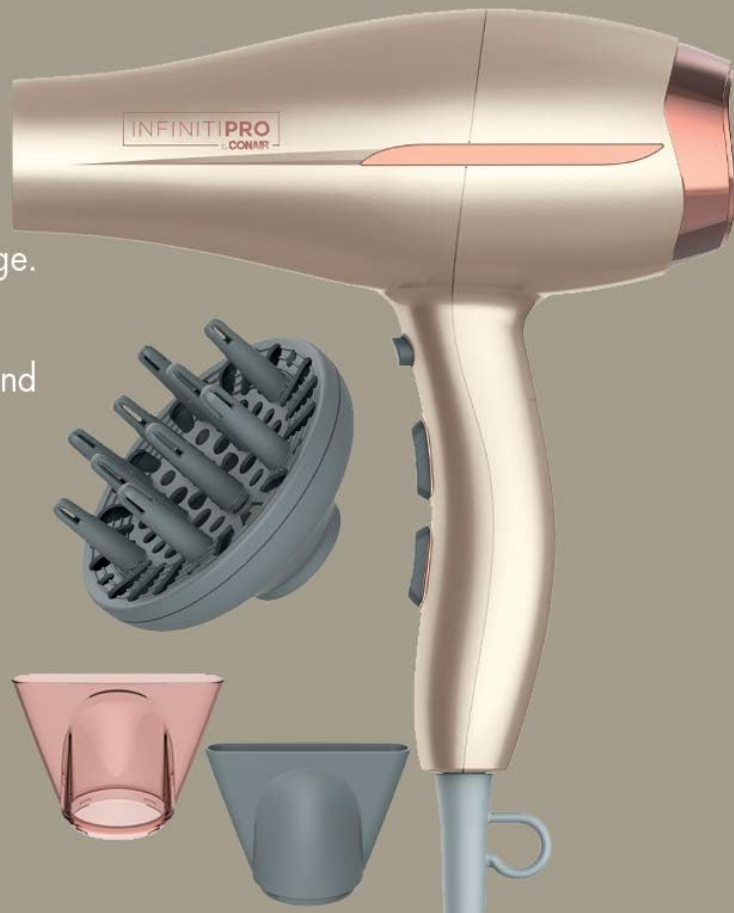
Minimize frizz and give those curls a boost!

### 3 HEAT/2 SPEED SETTINGS

Combine settings to customize your own unique style.

### COLD SHOT

Lock in that lovely look!.



**Image:** The Conair InfinitiPRO Frizz Free Hair Dryer, Model 750C, shown with its main body, two concentrator nozzles, and a diffuser attachment. This image provides a complete view of the product and its included accessories.

## LOCK IN YOUR LOOK

with the Cool  
Shot Button

## CUSTOMIZE YOUR OWN UNIQUE STYLE

with the 3 Heat/  
2 Speed Settings



**Image:** A close-up view of the Conair hair dryer's control panel, highlighting the Cool Shot button, the 3 Heat/2 Speed settings switch, and the power switch. This illustrates the user interface for adjusting airflow and temperature.

# TAKE CONTROL OF SHINIER LOOKS AND MORE VOLUME

with the 2 Concentrator attachments



**Image:** Two concentrator attachments, one translucent rose gold and one opaque grey, designed to direct airflow for precise styling. These are used for shinier looks and adding volume at the roots.

# MINIMIZE FRIZZ AND GIVE THOSE CURLS A BOOST

with the Diffuser attachment



**Image:** A grey diffuser attachment with multiple prongs, designed to evenly distribute airflow. This attachment helps to minimize frizz and enhance natural curls and waves.

## 3. SETUP

1. **Unpack:** Carefully remove the hair dryer and all accessories from the packaging.
2. **Inspect:** Check the appliance for any signs of damage. Do not use if damaged.
3. **Connect:** Plug the power cord into a suitable electrical outlet. Ensure the voltage matches the specifications of the appliance.
4. **Attach Accessories (Optional):**
  - To attach a concentrator or diffuser, align the attachment with the nozzle of the dryer and push it firmly into place until it clicks.
  - To remove, gently pull the attachment off the nozzle. Ensure the dryer is cool before handling attachments.

## 4. OPERATING INSTRUCTIONS

### Powering On/Off and Adjusting Settings:

1. **Power On:** Slide the ON/OFF switch to the desired speed setting (LOW or HIGH).
2. **Adjust Heat:** Use the heat setting switch to select your preferred temperature (COOL, WARM, or HOT).
3. **Cold Shot:** Press and hold the Cold Shot button for a burst of cool air to set your style. Release the button

to return to the selected heat setting.

4. **Power Off:** Slide the ON/OFF switch to the "0" position.

Using Attachments:

- **Concentrators:** Use the concentrator nozzles for precise drying and styling. Direct the airflow to specific sections of hair for smooth, sleek results or to add volume at the roots.
- **Diffuser:** Attach the diffuser for gentle drying of curly or wavy hair. This helps to maintain natural texture and minimize frizz. Hold the diffuser close to the scalp and gently lift hair as you dry.

5. MAINTENANCE

Regular maintenance ensures optimal performance and extends the life of your hair dryer.

1. **Cleaning the Air Filter:**
  - Ensure the hair dryer is unplugged and completely cool before cleaning.
  - Twist or pull off the rear filter cover.
  - Gently remove any accumulated lint or hair from the filter screen using a soft brush or cloth.
  - Replace the filter cover, ensuring it is securely fastened.
  - Clean the filter regularly, especially if you notice reduced airflow or increased noise.
2. **Storage:** Store the appliance in a cool, dry place when not in use. Do not wrap the cord around the dryer, as this can damage the cord.

6. TROUBLESHOOTING

Problem	Possible Cause	Solution
Dryer does not turn on.	No power supply; appliance not plugged in; circuit breaker tripped.	Check power outlet; ensure plug is fully inserted; reset circuit breaker if necessary.
Low airflow or overheating.	Air intake filter is blocked with lint or hair.	Unplug the dryer and clean the air filter as described in the Maintenance section.
Hair is still frizzy.	Ionic function not fully effective; improper technique.	Ensure hair is not overly wet; use a lower heat setting; apply a small amount of anti-frizz product before drying.

7. SPECIFICATIONS

- **Model Number:** 750C
- **Brand:** Conair
- **Power:** 1875 Watts
- **Material:** Ceramic
- **Color:** Rose Gold
- **Product Dimensions:** 83.82 x 28.96 x 61.21 cm (33 x 11.4 x 24.1 inches)
- **Weight:** 997.9 g (2.2 lbs)
- **Power Source:** Corded Electric
- **Country of Origin:** China

## 8. WARRANTY AND SUPPORT

---

This Conair InfinitiPRO Frizz Free Hair Dryer is covered by a manufacturer's warranty. For detailed warranty information, product support, or service inquiries, please refer to the warranty card included with your purchase or visit the official Conair website. Do not attempt to repair the appliance yourself.