



[Manuals.plus](#) /

› [KOHLER](#) /

› KOHLER 1123953 Plumbing Fixture Genuine Repair Part User Manual

KOHLER 1123953

KOHLER 1123953 Plumbing Fixture Genuine Repair Part User Manual

Model: 1123953 | Brand: KOHLER

1. INTRODUCTION

This manual provides essential information for the installation, operation, and maintenance of the KOHLER 1123953 Plumbing Fixture Genuine Repair Part. This component is designed to restore the original performance and extend the longevity of your KOHLER plumbing fixtures.

The KOHLER 1123953 is a genuine replacement control assembly, ensuring compatibility and adherence to KOHLER's quality standards. Always use genuine KOHLER parts to protect your product's warranty and ensure optimal functionality.

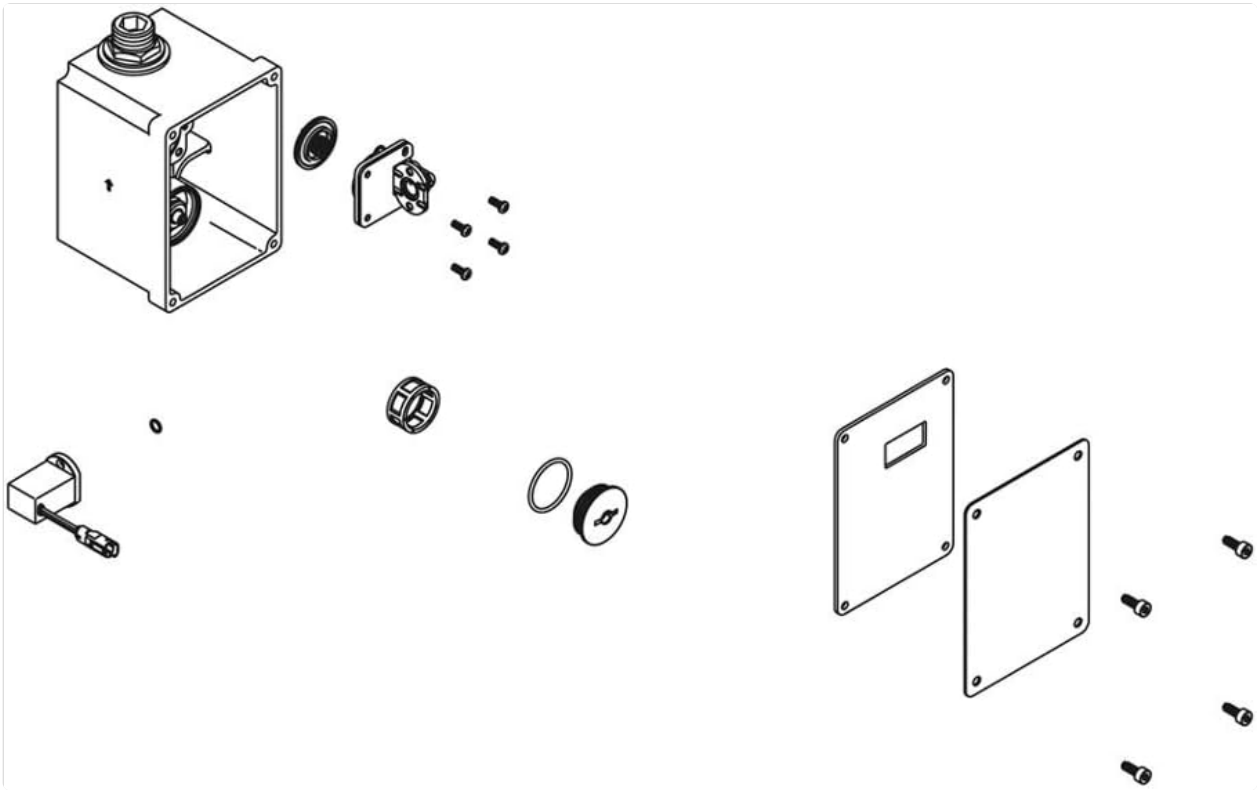


Image 1.1: The KOHLER 1123953 Plumbing Fixture Genuine Repair Part. This image displays the product as a standalone unit, ready for installation.

2. PRODUCT FEATURES

The KOHLER 1123953 Control Assembly offers the following key features:

- **Genuine KOHLER Part:** Ensures perfect fit, function, and maintains product warranty.
- **Replacement Control Assembly:** Specifically designed to replace the existing control assembly in compatible KOHLER fixtures.
- **Engineered for Longevity:** Designed by KOHLER engineers to promote the long-term performance of your plumbing system.
- **Premium Materials:** Constructed with high-quality materials for enhanced durability and reliability.

3. SETUP AND INSTALLATION

This section outlines the general steps for replacing a control assembly. Due to the complexity of plumbing systems and the specific design of various KOHLER fixtures, it is highly recommended that installation be performed by a qualified plumber or technician. Always refer to the specific installation guide for your particular KOHLER fixture for detailed instructions.

3.1 Safety Precautions

- **Turn off Water Supply:** Before beginning any work, locate and turn off the main water supply to the fixture or the entire house.
- **Depressurize Lines:** Open the faucet to drain any remaining water and relieve pressure in the lines.
- **Wear Protective Gear:** Use appropriate safety glasses and gloves.
- **Prepare Work Area:** Clear the area around the fixture and have towels ready for any residual water.

3.2 Replacement Steps (General)

1. **Access the Existing Control Assembly:** Depending on your fixture, this may involve removing handles, escutcheons, or access panels.
2. **Disconnect Old Assembly:** Carefully disconnect any water lines or electrical connections (if applicable) from the old control assembly. Note their positions for re-connection.
3. **Remove Old Assembly:** Unscrew or unclip the old control assembly from its housing.
4. **Inspect and Clean:** Clean the housing area and inspect for any debris or damage before installing the new part.
5. **Install New KOHLER 1123953:** Carefully place the new control assembly into position. Ensure all gaskets and seals are correctly seated.
6. **Reconnect:** Reconnect water lines and any electrical connections, ensuring they are secure and properly tightened (do not overtighten).
7. **Reassemble Fixture:** Reattach handles, escutcheons, or access panels.
8. **Restore Water Supply:** Slowly turn on the main water supply and check for leaks.
9. **Test Functionality:** Test the fixture to ensure the new control assembly is operating correctly.



Image 3.1: An example of a modern KOHLER plumbing fixture. The control assembly is an internal component that regulates water flow and temperature within such fixtures.

4. OPERATING THE CONTROL ASSEMBLY

The KOHLER 1123953 is a control assembly, which is an internal component of a larger plumbing fixture. It does not have direct user-facing controls. Its function is to regulate the flow and temperature of water within the fixture it is installed in. Once properly installed, the control assembly operates in conjunction with the fixture's handles or levers to provide the desired water output.

Refer to the user manual of your specific KOHLER faucet or shower system for instructions on how to operate the complete fixture.

5. MAINTENANCE

Proper maintenance ensures the longevity and optimal performance of your KOHLER plumbing fixture and its genuine repair parts.

5.1 General Care

- **Regular Cleaning:** Clean the exterior of your plumbing fixture regularly with a soft cloth and mild soap. Avoid abrasive cleaners or harsh chemicals that can damage finishes.
- **Inspect for Leaks:** Periodically check around the base of the fixture and under the sink/behind the wall for any signs of water leaks. Address any leaks promptly to prevent further damage.
- **Water Quality:** In areas with hard water, mineral deposits can accumulate over time. Consider using a

water softener or regularly cleaning aerators and showerheads to prevent buildup.

5.2 Internal Component Maintenance

The control assembly itself is generally maintenance-free under normal operating conditions. However, if you experience issues such as reduced water flow, inconsistent temperature, or difficulty operating the fixture, it may indicate wear or a need for inspection of internal components, including the control assembly. In such cases, it is advisable to consult a qualified plumber.

6. TROUBLESHOOTING

This section provides general troubleshooting tips for issues that might be related to a control assembly. For specific problems with your KOHLER fixture, refer to its dedicated troubleshooting guide or contact KOHLER customer support.

Problem	Possible Cause	Solution
Water Leakage from Fixture Base/Handle	Improperly seated control assembly, worn seals/gaskets, loose connections.	Ensure control assembly is correctly installed. Check and replace worn seals. Tighten connections (do not overtighten).
Inconsistent Water Temperature	Faulty control assembly, mineral buildup, issues with hot/cold water supply.	Inspect control assembly for damage. Clean any mineral deposits. Verify hot and cold water supply lines are functioning correctly.
Reduced Water Flow	Clogged aerator, mineral buildup in control assembly, low water pressure.	Clean or replace aerator. If problem persists, the control assembly may need inspection or replacement. Check household water pressure.
Difficulty Operating Handle/Lever	Worn control assembly, mineral buildup, loose handle.	Inspect and clean the control assembly. Ensure handle is securely attached. Replacement of the control assembly may be necessary.

If these troubleshooting steps do not resolve the issue, it is recommended to contact a professional plumber or KOHLER customer service for further assistance.

7. SPECIFICATIONS

The following are the technical specifications for the KOHLER 1123953 Plumbing Fixture Genuine Repair Part:

Part Number: 1123953

Item Model Number: 1123953

Manufacturer: Kohler

Item Weight: 0.32 ounces

Product Dimensions: 6.5 x 4.75 x 3.75 inches

Color: Unfinished

Item Package Quantity: 1

Included Components: Control Assy

Batteries Required?: No

Date First Available: January 10, 2012

8. WARRANTY AND SUPPORT

Using genuine KOHLER parts, such as the 1123953 control assembly, is crucial for maintaining the warranty on your KOHLER products. KOHLER genuine parts are designed to meet the brand's rigorous quality and performance standards.

For detailed warranty information specific to your KOHLER fixture or for support regarding the 1123953 repair part, please visit the official KOHLER website or contact KOHLER customer service directly. You can often find support resources, FAQs, and contact information on their website:

[Visit KOHLER Support Website](#)

When contacting support, please have your product model number (1123953) and the model number of the fixture it is installed in readily available.