



Manuals.plus /

- › Febi bilstein /
- › Febi Bilstein 05543 Wheel Bearing Kit Instruction Manual

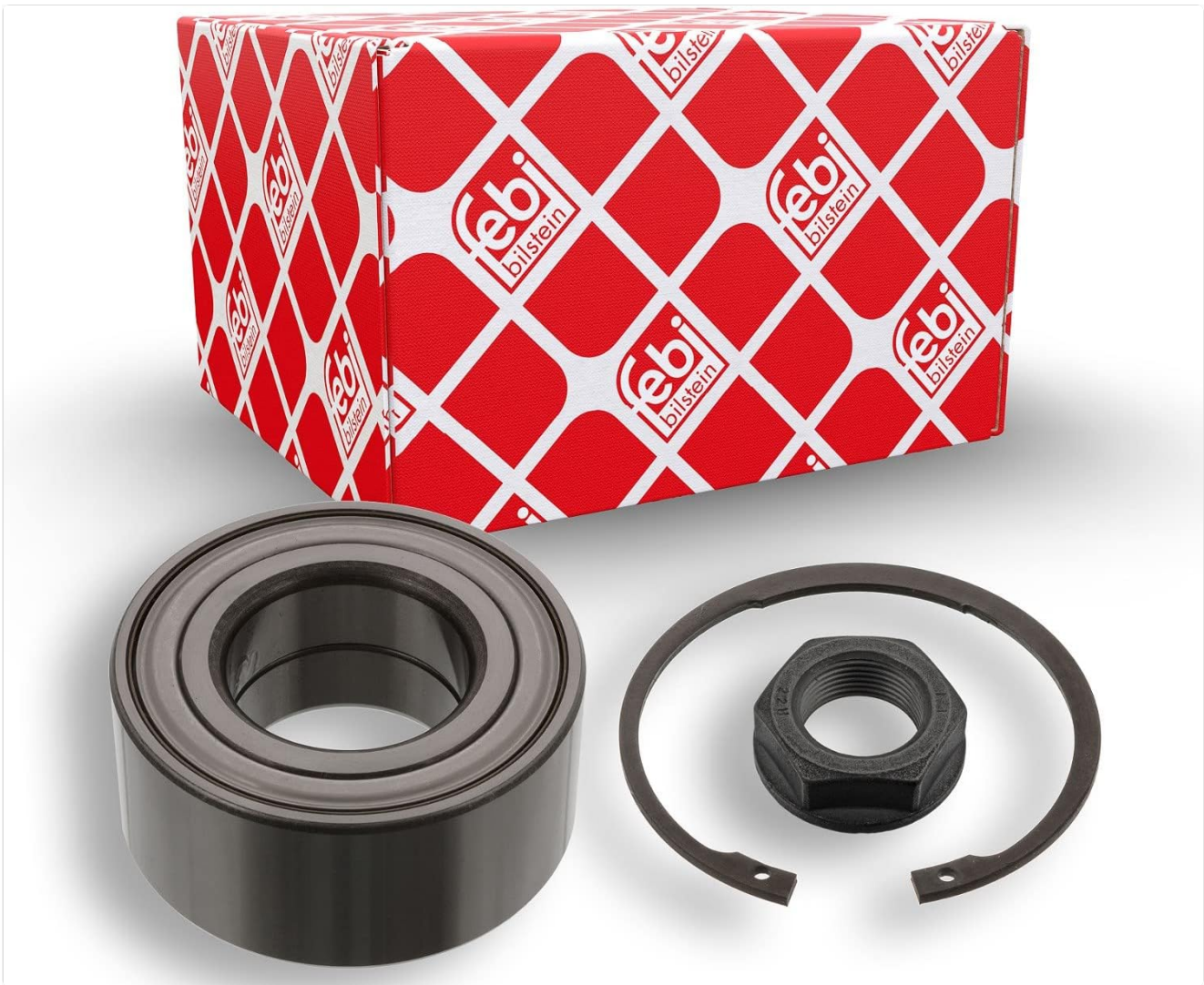
## Febi bilstein 05543

# Febi Bilstein 05543 Wheel Bearing Kit

## INSTRUCTION MANUAL

### Product Overview

The febi bilstein 05543 Wheel Bearing Kit is an original febi bilstein spare part, engineered and manufactured in Germany. This kit is designed to provide reliable performance for passenger cars and commercial vehicles, ensuring continuity, quality, and innovation in automotive components. The kit typically includes a wheel bearing, an axle nut, and a circlip, essential components for wheel hub assembly.



An image showing the Febi Bilstein 05543 Wheel Bearing Kit, which includes the wheel bearing, an axle nut, and a circlip, alongside its distinctive red and white febi bilstein branded packaging.

## Safety Information

**Important Safety Notice: Installation of automotive components, especially critical parts like wheel bearings, requires specialized knowledge, tools, and adherence to vehicle manufacturer specifications. Improper installation can lead to serious injury or vehicle damage.**

- Always observe the vehicle manufacturer's instructions and service manual before and during any repair work.
- All work involving the febi bilstein 05543 Wheel Bearing Kit should only be carried out by a qualified vehicle technician.
- Wear appropriate personal protective equipment (PPE), including safety glasses and gloves, during installation.
- Ensure the vehicle is securely supported on jack stands or a lift before beginning work.
- Do not reuse old fasteners unless explicitly permitted by the vehicle manufacturer.

## Package Contents

The febi bilstein 05543 Wheel Bearing Kit typically includes the following components:

- 1 x Wheel Bearing (angular ball bearing)
- 1 x Axle Nut
- 1 x Circlip

Please verify all components are present and undamaged upon receipt.

## Installation (Setup)

This section provides general guidance. Always refer to your specific vehicle's service manual for detailed, model-specific installation procedures and torque specifications.

- 1. Preparation:** Safely lift and support the vehicle. Remove the wheel, brake caliper, brake rotor, and any other components obstructing access to the wheel hub and bearing assembly.
- 2. Old Bearing Removal:** Carefully remove the old wheel bearing assembly. This may require specialized tools such as a bearing press or puller. Ensure no damage occurs to the hub or knuckle during removal.
- 3. Surface Preparation:** Clean the hub and knuckle mating surfaces thoroughly. Remove any rust, dirt, or debris to ensure proper seating of the new bearing.
- 4. New Bearing Installation:** Using appropriate tools (e.g., a bearing press), carefully press the new febi bilstein wheel bearing into the hub or knuckle. Ensure it is seated squarely and fully. Do not use a hammer directly on the bearing races.
- 5. Component Assembly:** Install the circlip to secure the bearing. Install the new axle nut and tighten it to the vehicle manufacturer's specified torque. Reassemble the brake components, wheel, and tire.
- 6. Final Checks:** Lower the vehicle. Perform a final check of all fasteners for proper torque. Test drive the vehicle at low speeds to ensure proper function and listen for any unusual noises.

*For optimal safety and performance, professional installation by a certified mechanic is strongly recommended.*

## Specifications

Key technical specifications for the febi bilstein 05543 Wheel Bearing Kit:

Attribute	Value
Model Number	05543
Manufacturer Part Number	05543
OEM Part Number (Citroën/Peugeot)	3350.16
Width	36 mm
Inner Diameter	42 mm
Outer Diameter	82 mm
Bearing Type	Angular Ball Bearing
Item Weight	854 g
Product Dimensions	35.58 x 16.46 x 10.05 cm
Position	Front
Suitable for (examples)	Citroën: BX, Berlingo, Xantia, Xsara, ZX; Peugeot: 205, 206, 207, 306, 309, 405, 406, Partner

## Maintenance

Wheel bearings are sealed units and are generally not user-serviceable. Proper installation is the most critical factor for their longevity. Once installed, routine maintenance typically involves:

- **Periodic Inspection:** During routine vehicle servicing (e.g., tire rotations, brake inspections), have a qualified technician inspect the wheel bearings for any signs of wear, looseness, or noise.
- **Addressing Issues Promptly:** If any unusual noises (e.g., humming, grinding) or excessive play are detected from the wheel area, have the vehicle inspected immediately by a professional.

No lubrication or adjustment is required for this type of sealed wheel bearing.

## Troubleshooting

If you experience issues after installing the febi bilstein 05543 Wheel Bearing Kit, consider the following general troubleshooting steps. Always consult a qualified vehicle technician for diagnosis and repair.

- **Noise (Humming, Grinding, Roaring):** This is a common symptom of a failing wheel bearing. If noise persists after installation, it could indicate improper installation, a defective part, or an issue with another component (e.g., tire, differential).
- **Vibration:** Vibrations, especially at certain speeds, can be caused by various issues, including wheel bearing problems. Check for proper wheel balance and alignment.
- **Loose Wheel/Play:** If there is excessive play when wiggling the wheel, it may indicate a loose or improperly installed bearing, or other suspension component issues.
- **ABS/Traction Control Light:** Some wheel bearings incorporate an ABS sensor. If this light illuminates after installation, check the sensor connection and ensure the bearing was installed correctly with respect to the ABS ring.

*If any of these symptoms occur, cease driving the vehicle if unsafe and seek professional automotive assistance immediately.*

## Warranty and Support

As an original febi bilstein product, the 05543 Wheel Bearing Kit is manufactured to high-quality standards. For specific warranty terms and conditions, please refer to the official febi bilstein website or contact their customer support directly. Always retain your proof of purchase for any warranty claims.

For technical support or further inquiries, please visit the official febi bilstein website or contact their authorized distributors.