

Manuals+

[Q & A](#) | [Deep Search](#) | [Upload](#)

manuals.plus /

- › [BaBylissPRO](#) /
- › [BaBylissPRO Nano Titanium Bambino Compact Dryer Instruction Manual](#)

BaBylissPRO BNT5510UC

BaBylissPRO Nano Titanium Bambino Compact Dryer Instruction Manual

Model: BNT5510UC

[Introduction](#) [Safety](#) [Features](#) [Setup](#) [Operation](#) [Maintenance](#) [Troubleshooting](#) [Specifications](#) [Warranty](#)

1. INTRODUCTION

The BaBylissPRO Nano Titanium Bambino Compact Dryer is a lightweight, powerful travel hair dryer designed for efficient and gentle hair drying. Featuring Nano Titanium technology, it distributes heat evenly to help protect hair from damage, leaving it smooth and shiny. Its compact size and dual voltage capability make it ideal for both home use and worldwide travel.



Image 1.1: The BaBylissPRO Nano Titanium Bambino Compact Dryer.

2. IMPORTANT SAFETY INSTRUCTIONS

When using electrical appliances, especially when children are present, basic safety precautions should always be followed, including the following:

- **DANGER:** Keep this appliance away from water. Do not use while bathing or in a shower.
- Always unplug the appliance immediately after use.
- Do not place or store appliance where it can fall or be pulled into a tub or sink.
- Do not place in or drop into water or other liquid.
- If an appliance falls into water, unplug it immediately. Do not reach into the water.
- **WARNING:** To reduce the risk of burns, electrocution, fire, or injury to persons:
- This appliance should never be left unattended when plugged in.
- Do not pull, twist, or wrap line cord around appliance.
- This appliance is not intended for use by persons (including children) with reduced physical, sensory or mental capabilities, or lack of experience and knowledge, unless they have been given supervision or instruction concerning use of the appliance by a person responsible for their safety.
- Use this appliance only for its intended use as described in this manual. Do not use attachments not recommended by the manufacturer.
- Never operate this appliance if it has a damaged cord or plug, if it is not working properly, or if it has been dropped, damaged, or dropped into water.
- Keep the cord away from heated surfaces.
- Never block the air openings of the appliance or place it on a soft surface, such as a bed or couch, where the air openings may be blocked. Keep the air openings free of lint, hair, and the like.
- Never use while sleeping.
- Never drop or insert any object into any opening.
- Do not use outdoors or operate where aerosol (spray) products are being used or where oxygen is being administered.
- Do not use an extension cord with this appliance.
- Do not direct hot air towards eyes or other heat-sensitive areas.
- The air outlet may be hot during use. Allow to cool before handling.

3. PRODUCT FEATURES

The BaBylissPRO Nano Titanium Bambino Compact Dryer is engineered with advanced technology and user-friendly features:

- **Nano Titanium Technology:** Distributes heat evenly and helps protect hair from damage, promoting smooth and shiny results.
- **Powerful 1000 Watt Motor:** Provides strong airflow for quick drying.
- **Ultra-Lightweight Design:** Weighing approximately 9.6 ounces, it is comfortable to hold and ideal for travel.
- **Dual Voltage:** Automatically adjusts for worldwide use (125V/250V), making it perfect for international travel.
- **2 Heat/Speed Settings:** Offers flexibility for various hair types and styling needs.
- **Removable Rear Filter/Stand:** Facilitates easy cleaning and maintenance.
- **Included Ultra-Thin Concentrator Nozzle:** Directs airflow for precise styling and smoothing.
- **6 ft. Power Cord:** Provides ample reach during use.



1000 Watts



Nano Titanium
Technology



120V / 240V
Dual Voltage

Image 3.1: Key features of the BaBylissPRO Nano Titanium Bambino Compact Dryer.

4. INITIAL SETUP

4.1 Dual Voltage Operation

This dryer is designed for dual voltage operation. It automatically adjusts to the correct voltage when plugged into an appropriate outlet (125V or 250V). No manual voltage selection switch is required.

4.2 Attaching the Concentrator Nozzle

The dryer comes with an ultra-thin concentrator nozzle for precise airflow. To attach, simply align the nozzle with the front barrel of the dryer and push it firmly into place. To remove, gently pull the nozzle off.

BaBylissPRO



Dry and style no
matter where you go.

Image 4.1: The dryer with its concentrator nozzle attached.

5. OPERATING INSTRUCTIONS

5.1 Powering On/Off and Adjusting Settings

The dryer features a convenient slide switch on the handle to control power and airflow settings:

- **OFF:** Slides the switch to the 'OFF' position to turn off the dryer.
- **LOW:** Slides the switch to the 'LOW' position for gentle drying and styling.
- **HIGH:** Slides the switch to the 'HIGH' position for fast drying and maximum airflow.

Select the desired setting based on your hair type and styling preference. For best results, use the concentrator nozzle to direct airflow for smooth, sleek styles.

BAMBINO™ COMPACT DRYER

Perfect for
on-the-go
styling.

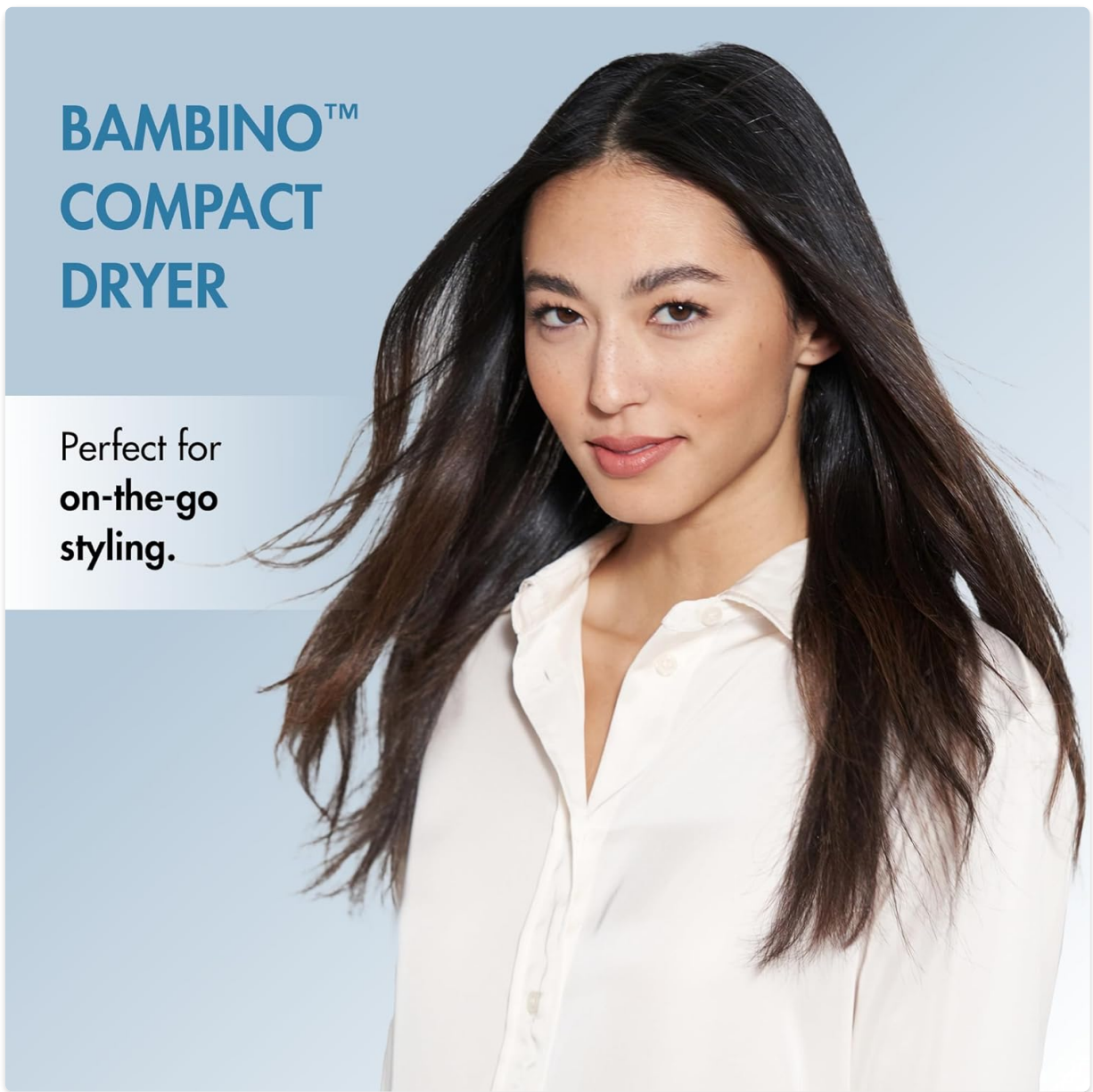


Image 5.1: The side view of the dryer highlighting the control switch.

6. MAINTENANCE

6.1 Cleaning the Air Filter

For optimal performance, the dryer's rear air filter should be cleaned regularly. To clean:

1. Ensure the dryer is unplugged from the power outlet and completely cool.
2. Gently twist or pull off the removable rear filter cover.
3. Use a soft brush or vacuum cleaner to remove any accumulated lint, dust, or hair from the filter screen.
4. Replace the filter cover by aligning it and pushing or twisting it back into place until secure.

Regular cleaning prevents overheating and extends the life of your dryer.

BaBylissPRO

BEFORE



AFTER



Image 6.1: The rear air filter of the dryer.

6.2 General Care

- Wipe the exterior of the dryer with a damp cloth. Do not use harsh cleaners or abrasives.
- Store the dryer in a cool, dry place when not in use. Do not wrap the cord tightly around the dryer.

7. TROUBLESHOOTING

If your BaBylissPRO Nano Titanium Bambino Compact Dryer is not functioning as expected, please refer to the following common issues and solutions:

- **Dryer does not turn on:**
 - Ensure the dryer is securely plugged into a working electrical outlet.
 - Check the power switch on the handle to ensure it is set to 'LOW' or 'HIGH'.
 - Verify that the safety plug (ALCI) has not tripped. If the 'RESET' button is popped out, press it firmly to reset.
- **Dryer overheats or shuts off during use:**
 - This is often a safety feature to prevent damage. Unplug the dryer and allow it to cool down for several

minutes.

- Clean the rear air filter as described in the Maintenance section (Section 6.1) to ensure proper airflow.
- Ensure the air intake and outlet are not blocked during operation.

- **Weak airflow:**

- Check the rear air filter for any blockages and clean if necessary.
- Ensure the dryer is set to the 'HIGH' speed setting for maximum airflow.

If the issue persists after trying these steps, please contact customer support.

8. TECHNICAL SPECIFICATIONS

Model Number	BNT5510UC
Brand	BaBylissPRO
Wattage	1000 watts
Power Source	Corded Electric
Voltage	Dual Voltage (125V/250V)
Hair Type Compatibility	All
Number of Speeds	2
Cable Length	6 Feet
Included Components	Concentrator Nozzle
Material Type	Titanium
Item Weight	9.6 ounces
Product Dimensions (L x W x H)	3 x 7.1 x 7.8 inches

9. WARRANTY AND SUPPORT

The BaBylissPRO Nano Titanium Bambino Compact Dryer comes with a **1-year limited warranty** from the date of purchase. This warranty covers manufacturing defects and ensures the product is free from defects in workmanship and materials under normal use.

For warranty claims, technical support, or any product-related inquiries, please contact BaBylissPRO customer service. Keep your proof of purchase for warranty validation.



The definitive professional brand

Respected and admired throughout the world. BaBylissPRO® Nano Titanium™ professional tools are ultra-lightweight and durable. Styling surfaces are strong, corrosion resistant, and ultra-smooth. Heat is evenly distributed and maintained at constant temperature. Ionic technology reduces frizz for sleek and shiny results.

1 YEAR WARRANTY

Image 9.1: BaBylissPRO 1-Year Warranty information.

© 2023 BaBylissPRO. All rights reserved.