

## Manuals+

[Q & A](#) | [Deep Search](#) | [Upload](#)

manuals.plus /

› [Faria](#) /

› [Faria Beede 33851 Chesapeake Stainless Steel Multifunction Fuel Level/Oil PSI \(80 PSI\)/Water Temp \(100-250°F\)/Voltmeter \(10-16 VDC\) - 4', White](#)

## Faria 33851

# Faria Beede Multifunction Gauge Instruction Manual

Model: 33851 Chesapeake Stainless Steel

## INTRODUCTION

---

This manual provides comprehensive instructions for the installation, operation, and maintenance of your Faria Beede 33851 Chesapeake Stainless Steel Multifunction Gauge. This single instrument integrates four essential marine functions: Fuel Level, Oil Pressure, Water Temperature, and Voltmeter, designed for reliable performance in marine environments.

## PRODUCT FEATURES

---

- Perimeter-lighted white dial with contoured black pointer for clear visibility.
- Stylish blue and black graphics for enhanced readability.
- Polished stainless steel bezel for durability and aesthetic appeal.
- Domed glass lens for improved clarity and protection.
- Size 4 gauge, requiring a 3.375" (85 mm) mounting hole for installation.

## PACKAGE CONTENTS

---

- Faria Beede 33851 Chesapeake Stainless Steel Multifunction Fuel Level/Oil PSI (80 PSI)/Water Temp (100-250°F)/Voltmeter (10-16 VDC) - 4', White Gauge

## SAFETY INFORMATION

---

**WARNING:** This product can expose you to chemicals including lead, which is known to the State of California to cause cancer and birth defects or other reproductive harm. For more information go to [www.P65Warnings.ca.gov](http://www.P65Warnings.ca.gov).

Always disconnect the battery before performing any electrical work. Ensure all wiring connections are secure and properly insulated to prevent short circuits and electrical hazards. Consult a qualified marine technician if you are unsure about any installation steps.

## SETUP AND INSTALLATION

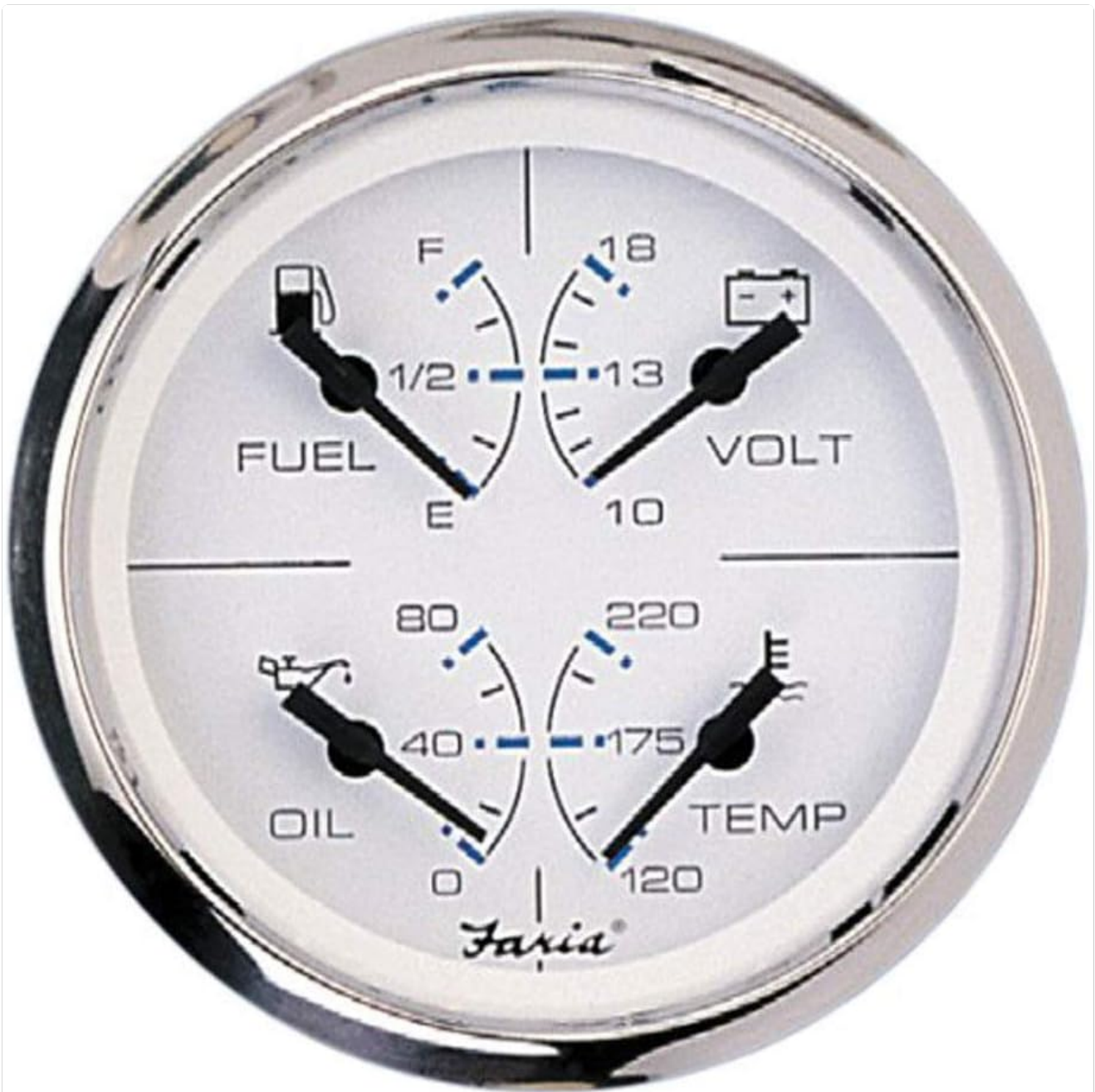
---

For detailed installation instructions, including wiring diagrams and mounting procedures, please refer to the official Installation Manual PDF provided by Faria Beede. A link to this document is typically available on the product's purchase

page or the manufacturer's website.

### General Installation Steps:

1. **Mounting:** Cut a 3.375" (85 mm) diameter hole in the desired mounting location. Ensure sufficient clearance behind the panel for wiring and gauge depth. Secure the gauge using the provided mounting bracket and hardware.
2. **Wiring:** Connect the gauge to the appropriate power, ground, and sender units. This multifunction gauge requires connections for fuel level sender, oil pressure sender, water temperature sender, and a 12V DC power source (switched and unswitched for illumination).
3. **Sender Compatibility:** Ensure your existing senders are compatible with Faria Beede gauges. Incompatible senders may result in inaccurate readings.
4. **Testing:** After installation, reconnect the battery and test all gauge functions to ensure proper operation and accurate readings.



This image shows the Faria Beede Chesapeake Stainless Steel Multifunction Gauge. The gauge features a white dial with four distinct quadrants: Fuel level (E-F), Voltmeter (10-18 VDC), Oil Pressure (0-80 PSI), and Water Temperature (120-220°F). Each quadrant has a black pointer and blue markings. The gauge is encased in a polished stainless steel bezel.

## OPERATING INSTRUCTIONS

The Faria Beede Multifunction Gauge provides real-time monitoring of four critical engine and vessel parameters. Once properly installed and powered, the gauge will display readings as follows:

- **Fuel Level:** Located in the top-left quadrant, this gauge indicates the fuel level in your tank, typically ranging from 'E' (Empty) to 'F' (Full). Readings are dependent on the connected fuel level sender.
- **Voltmeter:** Positioned in the top-right quadrant, the voltmeter displays the electrical system voltage, typically ranging from 10 to 18 VDC. This indicates the health of your battery and charging system.
- **Oil Pressure:** Found in the bottom-left quadrant, the oil pressure gauge shows the engine's oil pressure, typically ranging from 0 to 80 PSI. Maintaining proper oil pressure is crucial for engine lubrication.
- **Water Temperature:** Located in the bottom-right quadrant, this gauge indicates the engine's coolant temperature, typically ranging from 120°F to 220°F (or 100-250°F as per product description). Monitoring engine temperature helps prevent overheating.

The gauge features perimeter lighting for visibility in low-light conditions. This illumination activates when the vessel's navigation or instrument lights are turned on, provided it is wired correctly.

## MAINTENANCE

---

To ensure the longevity and accuracy of your Faria Beede Multifunction Gauge, follow these simple maintenance guidelines:

- **Cleaning:** Clean the gauge face and bezel with a soft, damp cloth. Avoid abrasive cleaners or solvents that could damage the lens or finish.
- **Connections:** Periodically check all electrical connections to ensure they are tight and free from corrosion. Loose or corroded connections can lead to inaccurate readings or intermittent operation.
- **Environmental Protection:** While designed for marine use, prolonged exposure to harsh elements can affect the gauge. Ensure proper sealing around the mounting hole to prevent water ingress.

## TROUBLESHOOTING

---

If you experience issues with your multifunction gauge, refer to the table below for common problems and potential solutions:

Problem	Possible Cause	Solution
Gauge not powering on / No illumination	No power supply; Blown fuse; Loose wiring connection; Faulty ground.	Check power source and fuse; Verify all wiring connections are secure; Ensure proper ground connection.
Inaccurate or erratic readings	Incompatible sender; Faulty sender; Loose or corroded sender wire; Grounding issue.	Verify sender compatibility; Test sender unit; Check sender wiring and connections; Ensure good ground.
Needle stuck or not moving	Mechanical obstruction; Internal gauge fault; No signal from sender.	Inspect for obstructions; Test sender output; If problem persists, gauge may require replacement.
Condensation inside lens	Moisture ingress; Improper sealing during installation.	Ensure mounting hole is properly sealed; Allow gauge to dry out in a warm, dry environment.

If you are unable to resolve the issue using these steps, please contact Faria Beede customer support or a certified marine technician.

## SPECIFICATIONS

---

Attribute	Detail
Brand	Faria
Model Number	33851
Material	Stainless Steel
Item Dimensions (L x W x H)	7 x 7 x 6 inches
Item Weight	9.92 ounces
Screen Size	4 Inches
UPC	759266338517
Manufacturer	Faria Beede
Country of Origin	USA
Fuel Level Range	Empty (E) to Full (F)
Oil Pressure Range	0-80 PSI
Water Temperature Range	100-250°F
Voltmeter Range	10-16 VDC

## WARRANTY INFORMATION

---

Faria Beede products are manufactured to high standards and typically come with a limited warranty against defects in materials and workmanship. The specific terms and duration of the warranty may vary. Please refer to the warranty card included with your product or visit the official Faria Beede website for detailed warranty information and registration procedures.

## CUSTOMER SUPPORT

---

For technical assistance, troubleshooting beyond this manual, or warranty claims, please contact Faria Beede customer support. Contact information, including phone numbers and email addresses, can typically be found on the manufacturer's official website or in the product packaging.

### Online Resources:

- Official Faria Beede Website: [www.fariabeede.com](http://www.fariabeede.com) (Note: This is a placeholder URL, please refer to actual manufacturer website.)
- Product Support Pages: Look for a 'Support' or 'Downloads' section on the website for additional manuals, FAQs, and wiring diagrams.