

Paulmann 950.73

Paulmann 950.73 Remote Control Instruction Manual



1. INTRODUCTION

This manual provides essential information for the proper setup, operation, and maintenance of your Paulmann 950.73 Remote Control. Please read these instructions carefully before using the device to ensure safe and efficient functionality. Keep this manual for future reference.

2. PRODUCT OVERVIEW

The Paulmann 950.73 is a compact and modern remote control designed for wireless operation of compatible Paulmann lighting systems. It features a chrome finish and is constructed from durable plastic, offering a comfortable grip and intuitive control over your lighting.

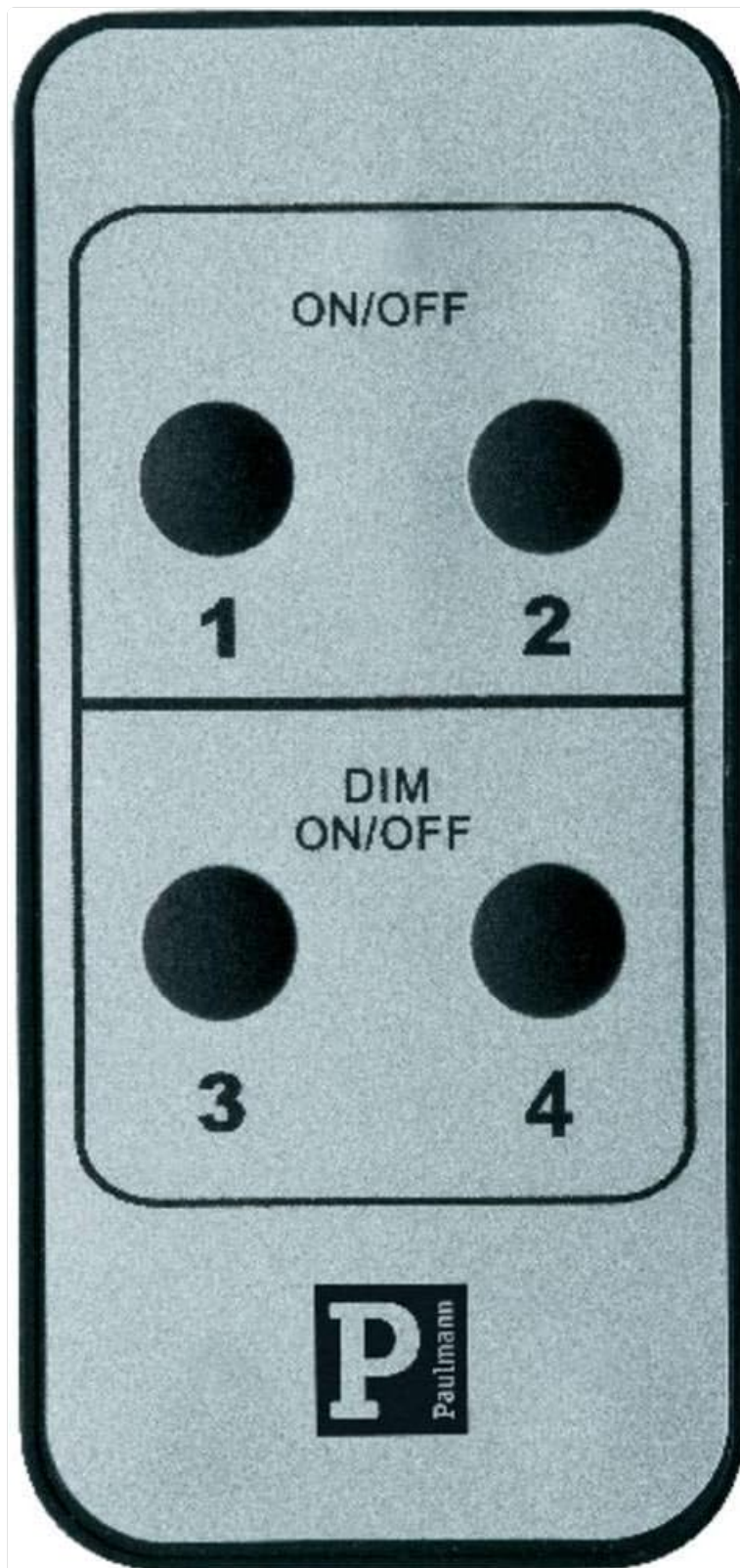


Image 1: Front view of the Paulmann 950.73 Remote Control, showing the ON/OFF and DIM ON/OFF buttons for four channels.

Key Features:

- Wireless control for Paulmann lighting systems.
- Dedicated ON/OFF functionality.
- Dimming control (DIM ON/OFF) for compatible fixtures.
- Four independent control channels (1, 2, 3, 4).
- Modern chrome design.

3. SETUP

3.1 Battery Installation

The Paulmann 950.73 Remote Control requires batteries for operation. Batteries are not included with the product. Please refer to the energy label for the correct battery type (typically AAA or similar, as indicated by the 'Battery / Accu' symbol).

1. Locate the battery compartment cover on the back of the remote control.
2. Slide or unclip the cover to open the compartment.
3. Insert the required batteries, ensuring correct polarity (+ and -) as indicated inside the compartment.
4. Replace the battery compartment cover securely.

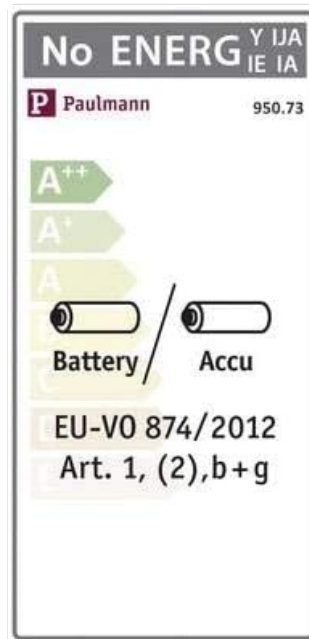


Image 2: Energy label indicating battery or accumulator power source.

3.2 Pairing with Lighting System

Before first use, the remote control must be paired with your Paulmann lighting system. The exact pairing procedure may vary depending on your specific Paulmann receiver or light fixture. Generally, the steps involve:

1. Ensure your Paulmann lighting system is powered on and in pairing mode (refer to your lighting system's manual for specific instructions).
2. On the 950.73 remote, press and hold the desired channel button (1, 2, 3, or 4) for a few seconds until the light system responds (e.g., flashes or changes brightness).
3. Release the button. The remote should now be paired with that channel.
4. Repeat for other channels if you wish to control multiple lighting groups independently.

4. OPERATION

The Paulmann 950.73 Remote Control offers straightforward operation for your connected lighting.

Button Functions:

- **ON/OFF (Top Section):** Press the respective channel button (1 or 2) in the top section to turn the connected light fixture ON or OFF.

- **DIM ON/OFF (Bottom Section):** Press the respective channel button (3 or 4) in the bottom section to turn the connected light fixture ON or OFF. For compatible dimmable fixtures, holding down the button may initiate dimming. Release the button at the desired brightness level.

Note: The dimming function (DIM ON/OFF) will only work if the connected Paulmann lighting system and its light source are dimmable. If your system is not dimmable, these buttons will function as simple ON/OFF switches.

5. MAINTENANCE

5.1 Cleaning

To clean the remote control, use a soft, dry cloth. For stubborn dirt, a slightly damp cloth with mild soap can be used, followed by immediate drying. Do not use abrasive cleaners, solvents, or harsh chemicals, as these can damage the surface.

5.2 Battery Replacement

Replace batteries when the remote's range decreases or it becomes unresponsive. Follow the battery installation steps in Section 3.1. Always dispose of used batteries responsibly according to local regulations.

6. TROUBLESHOOTING

Common Issues and Solutions:

- **Remote not responding:**
 - Check if the batteries are correctly inserted and not depleted. Replace if necessary.
 - Ensure the remote is within range of the receiver.
 - Re-pair the remote control with the lighting system (refer to Section 3.2).
- **Dimming function not working:**
 - Verify that your Paulmann lighting system and the installed light source are dimmable.
 - Ensure the remote is correctly paired to a dimmable channel.
- **Interference:**
 - Avoid placing the remote near strong electromagnetic fields or other wireless devices that might cause interference.

7. SPECIFICATIONS

Attribute	Detail
Model Number	950.73
Brand	Paulmann
Color	Chrome
Material	Plastic

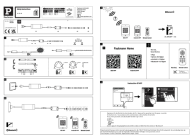
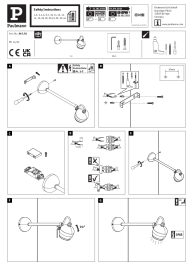
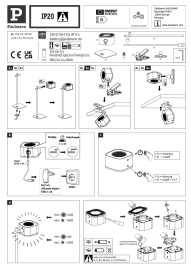
Dimensions (Width x Depth x Height)	4 cm x 8.5 cm x 0.7 cm
Weight	60 g
Style	Modern
Switch Type	Remote Control
Power Source	Battery (not included)
Usage Environment	Indoor use only

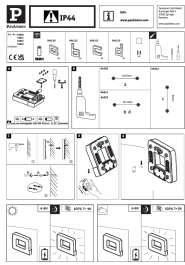
8. WARRANTY AND SUPPORT

For information regarding warranty coverage, technical support, or spare parts availability for your Paulmann 950.73 Remote Control, please refer to the official Paulmann website or contact Paulmann customer service directly. This information is not provided within this manual.

Please retain your proof of purchase for any warranty claims.

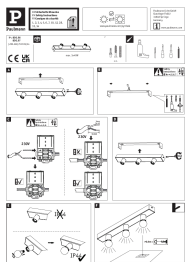
Related Documents - 950.73

	<p>Paulmann MaxLED 500 LED Strip Smart Home Bluetooth Installation Guide</p> <p>This guide details the installation and operation of the Paulmann MaxLED 500 LED strip system (models 709.07, 709.08), a smart home lighting solution controllable via Bluetooth and the Paulmann Home app.</p>
	<p>Paulmann 947.78 Kikolo Exterior Wall Luminaire Installation Guide</p> <p>Comprehensive installation guide for the Paulmann 947.78 Kikolo exterior wall luminaire. Includes safety instructions, assembly steps, wiring guidance, and product specifications for this IP65 rated outdoor light.</p>
	<p>Paulmann Varia LED Lamp - User Manual and Specifications</p> <p>Detailed information on the Paulmann Varia LED lamp, including specifications, assembly instructions, usage guidelines, and component replaceability.</p>



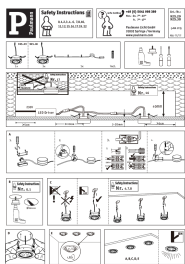
[Paulmann 94650-94653 Series Outdoor Solar House Number Light Installation Guide](#)

Installation guide for the Paulmann 94650-94653 series outdoor solar house number light. Includes details on battery, mounting, and operation.



[Paulmann 800.96/800.97 Luminaire Installation Guide & Safety Instructions](#)

Comprehensive installation guide and safety instructions for the Paulmann 800.96 and 800.97 luminaires. Learn how to safely install, wire, and maintain your Paulmann lighting fixture.



[Paulmann 925.29/925.30 LED Recessed Light Safety and Installation Guide](#)

Detailed safety instructions and installation guide for Paulmann 925.29 and 925.30 LED recessed lights. Includes step-by-step diagrams and essential electrical connection information.