

Manuals+

[Q & A](#) | [Deep Search](#) | [Upload](#)

[manuals.plus](#) /

- › [Sealey](#) /
- › [Sealey SA686 Air Impact Wrench User Manual](#)

Sealey SA686

Sealey SA686 Air Impact Wrench User Manual

Model: SA686 | Brand: Sealey

INTRODUCTION

This manual provides essential information for the safe and effective operation, maintenance, and troubleshooting of your Sealey SA686 Air Impact Wrench. The SA686 is a 1" Sq Drive Compact Air Impact Wrench featuring a Twin Hammer mechanism, designed for heavy-duty fastening and loosening applications. Please read this manual thoroughly before using the tool to ensure proper handling and to prevent injury or damage.



Figure 1: The Sealey SA686 Air Impact Wrench, showcasing its compact design and 1-inch square drive.

SAFETY INFORMATION

Always observe the following safety precautions to reduce the risk of personal injury or damage to the tool.

- **Personal Protective Equipment:** Always wear approved eye protection (safety glasses or goggles) and hearing protection (earplugs or earmuffs) when operating the impact wrench. Gloves are also recommended.
- **Air Supply:** Ensure the air compressor is capable of providing the required air pressure and volume. Do not exceed the maximum operating pressure of the tool. Use clean, dry, regulated compressed air.
- **Hose and Connections:** Inspect air hoses for wear, cuts, or damage before each use. Ensure all connections are secure to prevent accidental disconnection.
- **Work Area:** Keep the work area clean, well-lit, and free from obstructions. Ensure adequate ventilation.
- **Secure Workpiece:** Always secure the workpiece to prevent movement during operation.
- **Proper Grip:** Maintain a firm grip on the tool at all times. Be prepared for torque reaction.
- **Avoid Accidental Starting:** Ensure the trigger is not depressed when connecting to the air supply or changing accessories.
- **Maintenance:** Disconnect the tool from the air supply before performing any maintenance, changing accessories, or storing the tool.
- **Tool Condition:** Do not use the tool if it is damaged or malfunctioning. Refer to the troubleshooting section or contact qualified service personnel.
- **Children and Bystanders:** Keep children and bystanders away from the operating area.

SETUP

1. **Unpacking:** Carefully remove the impact wrench from its packaging. Inspect the tool for any signs of shipping damage. Report any damage to your supplier immediately.
2. **Air Supply Connection:**
 - Ensure your air compressor is turned off and depressurized.
 - Connect a suitable air hose (minimum 3/8" I.D. recommended for optimal performance) to the air inlet of the impact wrench. The air inlet is typically located at the base of the handle.
 - Install an in-line air filter/lubricator unit as close to the tool as possible. This helps to ensure clean, lubricated air, which is crucial for the tool's longevity.
 - Set the air pressure regulator on your compressor to the recommended operating pressure (refer to Specifications section).
3. **Lubrication:** Before first use and regularly thereafter, add a few drops of air tool oil into the air inlet. This lubricates the internal components.
4. **Socket Attachment:**
 - Select the correct 1" square drive impact socket for your application. Only use impact-grade sockets.
 - Push the socket firmly onto the square drive anvil until it clicks into place or is securely seated.

OPERATING INSTRUCTIONS

Follow these steps for effective and safe operation of your SA686 Air Impact Wrench.

1. **Direction Control:** Locate the forward/reverse selector switch, typically near the trigger or at the rear of the tool. Set it to the desired direction (forward for tightening, reverse for loosening).
2. **Applying the Tool:** Place the impact socket squarely onto the fastener (nut or bolt head). Ensure the socket is fully engaged.
3. **Activating the Tool:** Depress the trigger to start the tool. The tool will begin to impact, applying torque to the

fastener.

4. **Controlling Torque:** The SA686 is a powerful tool. For critical torque applications, always use a calibrated torque wrench for final tightening or to verify torque after using the impact wrench. Avoid over-tightening fasteners.
5. **Loosening Fasteners:** For stubborn fasteners, apply steady pressure and allow the tool to impact until the fastener begins to turn.

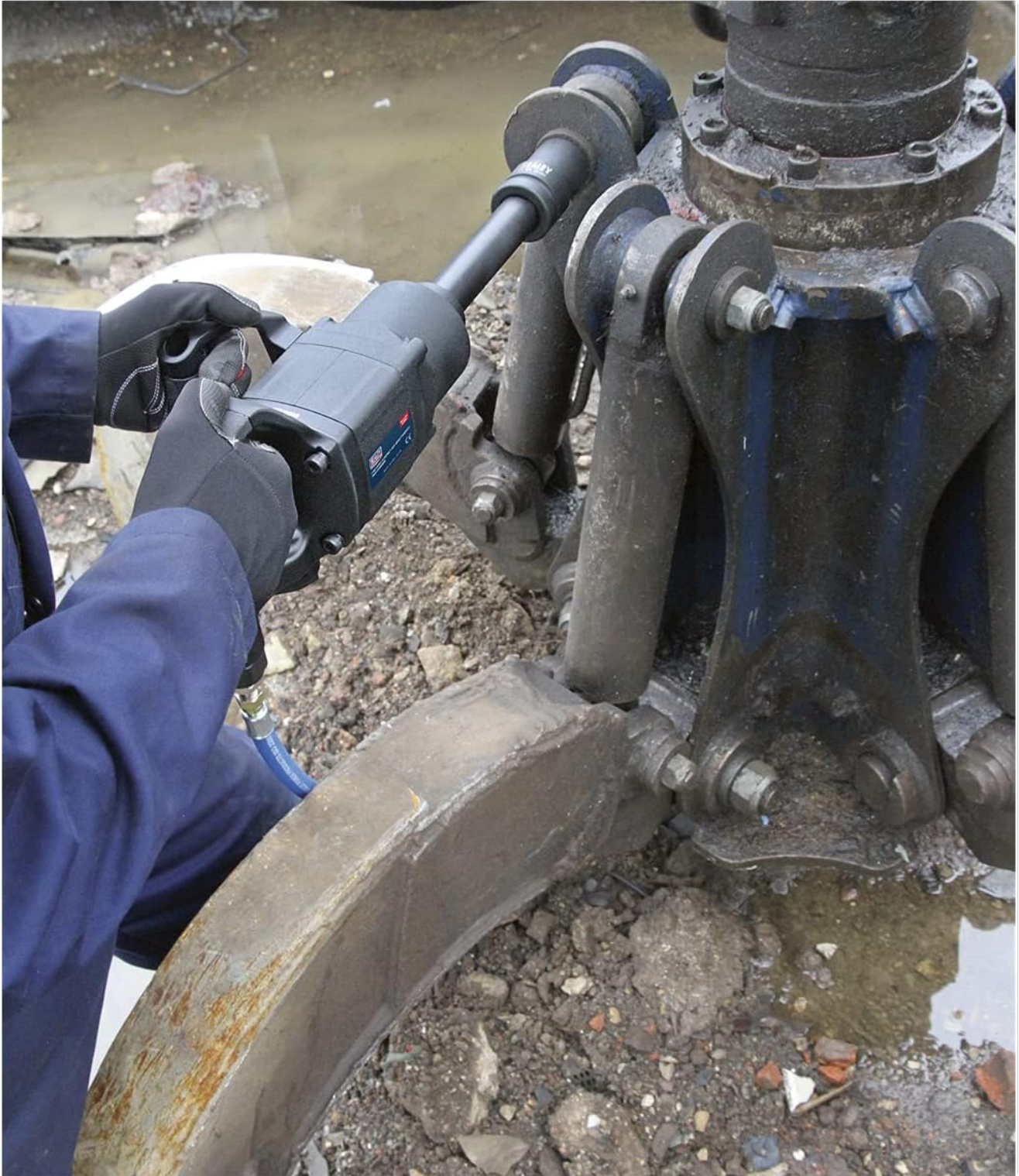


Figure 2: The SA686 in use, demonstrating its application on large industrial fasteners. Note the user's firm grip and protective gloves.



Figure 3: A side view of the impact wrench in operation, highlighting the extended anvil and the connection to the air hose.



Figure 4: A closer look at the user's hands on the tool, showing the ergonomic handle and trigger mechanism during use.

MAINTENANCE

Regular maintenance ensures the longevity and optimal performance of your air impact wrench.

- **Daily Lubrication:** Before each use, or at the start of each shift, add 5-10 drops of high-quality air tool oil into the air inlet. Run the tool for a few seconds to distribute the oil.
- **Air Filter/Lubricator:** Regularly check and drain any moisture from the air filter. Ensure the lubricator reservoir is filled with appropriate air tool oil.
- **Cleaning:** Keep the tool clean and free from dirt, dust, and debris. Wipe down the exterior with a clean cloth. Do not use harsh solvents.
- **Anvil Inspection:** Periodically inspect the square drive anvil for wear or damage. Replace if necessary.
- **Hose and Fittings:** Check air hoses and fittings for leaks, wear, or damage. Replace any compromised components.
- **Storage:** When not in use, disconnect the tool from the air supply. Store the tool in a clean, dry, and secure location, away from extreme temperatures and corrosive environments.

TROUBLESHOOTING

This section addresses common issues you might encounter with your SA686 Air Impact Wrench.

Problem	Possible Cause	Solution
Tool not operating or low power	Insufficient air pressure/volume Air leaks in hose or fittings Clogged air filter Lack of lubrication Worn internal parts	Check compressor output and regulator setting. Ensure adequate hose diameter. Inspect all connections for leaks; tighten or replace. Clean or replace air filter. Add air tool oil to the inlet. Contact qualified service personnel.
Excessive air consumption	Air leaks Worn internal seals	Check all connections and hoses for leaks. Contact qualified service personnel for seal replacement.
Tool runs but does not impact	Lack of lubrication Damaged hammer mechanism	Add air tool oil. Contact qualified service personnel.

If the problem persists after attempting these solutions, discontinue use and contact Sealey customer support or a qualified service center.

SPECIFICATIONS

Feature	Detail
Brand	Sealey
Model Number	SA686
Drive Size	1" Square Drive
Mechanism	Twin Hammer
Material	Aluminum
Operation Mode	Pneumatic
Item Weight	9.21 Kilograms (approx. 20.3 pounds)
Product Dimensions	1.97 x 8.66 x 21.18 inches
Finish Type	Powder Coated

WARRANTY AND SUPPORT



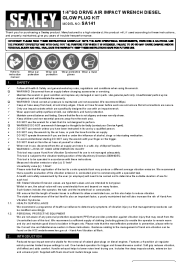

For warranty information, please refer to the warranty card included with your product or visit the official Sealey website. Warranty terms and conditions may vary by region and product.

If you require technical assistance, spare parts, or service for your Sealey SA686 Air Impact Wrench, please contact Sealey customer support directly. Contact details can typically be found on the Sealey website or on your product packaging.

Note: Unauthorized repairs or modifications will void the product warranty.

© 2023 Sealey. All rights reserved. This manual is for informational purposes only.

Related Documents - SA686

	<p>Sealey SA686 Air Impact Wrench Parts Information Model SA686</p> <p>Comprehensive parts list and information for the Sealey SA686 1"Sq Drive Twin Hammer Compact Air Impact Wrench. Includes part numbers, descriptions, and contact details for Sealey Group.</p>
	<p>Sealey SA6004.V2 3/4" SQ Drive Compact Air Impact Wrench - User Manual</p> <p>This user manual provides essential information for the Sealey SA6004.V2 3/4" SQ Drive Compact Air Impact Wrench. It covers critical safety guidelines, operational procedures, maintenance advice, and troubleshooting tips for effective and safe use of this twin-hammer air tool.</p>
	<p>Sealey CP108VCIWBO 10.8V Cordless Impact Wrench - Body Only User Manual</p> <p>Comprehensive user manual for the Sealey CP108VCIWBO 10.8V 3/8"Sq Drive Cordless Impact Wrench. Includes safety instructions, specifications, operation guide, maintenance, and warranty information.</p>
	<p>Sealey SA141 1/4"Sq Drive Air Impact Wrench Diesel Glow Plug Kit - User Manual</p> <p>Comprehensive user manual for the Sealey SA141 1/4"Sq Drive Air Impact Wrench Diesel Glow Plug Kit. Includes safety instructions, specifications, operation, and maintenance guidelines.</p>
	<p>Sealey CP20VIW 20V 1/2" Sq Drive Impact Wrench 230Nm - Body Only</p> <p>Comprehensive instructions and specifications for the Sealey CP20VIW 20V cordless 1/2" Sq Drive Impact Wrench. Details include safety precautions, operational guidance, maintenance procedures, technical specifications, and warranty information for this 230Nm torque tool.</p>



[Sealey STW306.V2 1/2" Digital Torque Wrench with Angle Function: User Manual](#)

Comprehensive user manual for the Sealey STW306.V2 1/2" digital torque wrench with angle function. Includes safety instructions, specifications, operation guide, maintenance, and environmental information.