

MEAN WELL DR-60-24

Mean Well DR-60-24 DIN-Rail Power Supply User Manual

Model: DR-60-24

1. INTRODUCTION

This manual provides essential information for the safe and efficient operation of your Mean Well DR-60-24 DIN-Rail Power Supply. The DR-60-24 is a 24 Volt, 2.5 Amp, 60 Watt power supply designed for DIN-Rail mounting. It features an input voltage range of 85 to 264 VAC and is suitable for various industrial applications.

Please read this manual thoroughly before installation and operation, and retain it for future reference.

2. SAFETY INFORMATION

WARNING: Risk of electric shock. Do not open the unit. Refer all servicing to qualified personnel.

- This device is designed for indoor use only.
- Install the unit in a protected environment only, free from excessive moisture, dust, and extreme temperatures.
- Ensure proper grounding to prevent electrical hazards.
- Disconnect power before performing any installation, maintenance, or troubleshooting.
- Do not exceed the specified input voltage and output current ratings.
- Ensure adequate ventilation around the power supply to prevent overheating.

3. PRODUCT OVERVIEW

The Mean Well DR-60-24 is a compact DIN-Rail mountable power supply. It provides a stable 24V DC output from an AC input. Key features include:

- Universal AC input range (85-264 VAC)
- High efficiency
- Protections: Short circuit, overload, over voltage
- DIN-Rail mountable



Figure 3.1: Front view of the Mean Well DR-60-24 power supply, showing the input/output terminals and model label.



Figure 3.2: Close-up view of the top label on the DR-60-24, detailing input (100-240VAC, 1.8A) and output (24V, 2.5A) specifications, along with safety warnings and serial number.

4. SETUP AND INSTALLATION

4.1 Mounting

The DR-60-24 is designed for mounting on a standard DIN-Rail (TS-35/7.5 or TS-35/15). Ensure the mounting surface is stable and capable of supporting the unit's weight.

1. Align the power supply with the DIN-Rail.
2. Push the unit onto the rail until it clicks securely into place.
3. Verify that the unit is firmly attached and does not wobble.



Figure 4.1: Top view of the DR-60-24, showing the terminal block layout and overall compact design suitable for DIN-Rail mounting.

4.2 Wiring Connections

Before making any connections, ensure the main power supply is OFF.

Table 4.1: Terminal Connections

Terminal	Description
N	AC Neutral Input
L	AC Line Input
⏏	Ground (Earth)
+V	DC Output Positive
-V	DC Output Negative

Connect the AC input wires to the 'N' and 'L' terminals. Connect the ground wire to the ground terminal. Connect your load to the '+V' and '-V' terminals, ensuring correct polarity. Use appropriate wire gauges for the current requirements.

5. OPERATING INSTRUCTIONS

Once properly installed and wired, the DR-60-24 power supply operates automatically upon receiving AC input power.

- **Power On:** Apply AC power to the input terminals. The "DC OK" indicator LED (if present, typically green) should

illuminate, indicating stable DC output.

- **Output Voltage Adjustment:** The DR-60-24 may have a small potentiometer (labeled "ADJ" or similar) for fine-tuning the output voltage. Use a small screwdriver to adjust if necessary, staying within the specified voltage range.
- **Overload Protection:** If the output current exceeds the rated value (2.5A), the unit's overload protection will activate, potentially shutting down the output or limiting current. Remove the overload condition, and the unit should recover automatically.

6. MAINTENANCE

The Mean Well DR-60-24 power supply is designed for long-term, reliable operation with minimal maintenance.

- **Cleaning:** Periodically clean the exterior of the unit with a soft, dry cloth. Do not use liquid cleaners or solvents. Ensure power is disconnected before cleaning.
- **Ventilation:** Ensure that the ventilation openings are not obstructed by dust or debris. Proper airflow is crucial for heat dissipation.
- **Connections:** Periodically check all wiring connections to ensure they are secure and free from corrosion.

No user-serviceable parts are inside. Do not attempt to open or repair the unit.

7. TROUBLESHOOTING

Table 7.1: Common Troubleshooting Steps

Problem	Possible Cause	Solution
No output voltage / "DC OK" LED off	No AC input power Input fuse blown Overload/Short circuit on output	Check AC power source and connections. Consult qualified electrician for fuse replacement. Disconnect load, check for short circuit, then reconnect.
Output voltage too low or unstable	Overload condition Loose connections Faulty unit	Reduce load. Check and tighten all wiring connections. Contact customer support if problem persists.
Unit is hot to the touch	Insufficient ventilation Ambient temperature too high Overload	Ensure proper airflow around the unit. Operate within specified temperature range. Reduce load.

If you encounter issues not listed here or if the problem persists after attempting the solutions, please contact Mean Well customer support or a qualified technician.

8. SPECIFICATIONS

Table 8.1: Technical Specifications

Parameter	Value
Model Number	DR-60-24
Input Voltage Range	85 to 264 VAC

Parameter	Value
Output Voltage	24 VDC
Output Current	2.5 Amp
Output Power	60 Watt
Dimensions (L x W x H)	3.1" x 3.7" x 2.2" (approx. 78.7mm x 94mm x 55.9mm)
Product Dimensions	2.2 x 3.07 x 3.66 inches; 10.07 ounces
Manufacturer	Mean Well

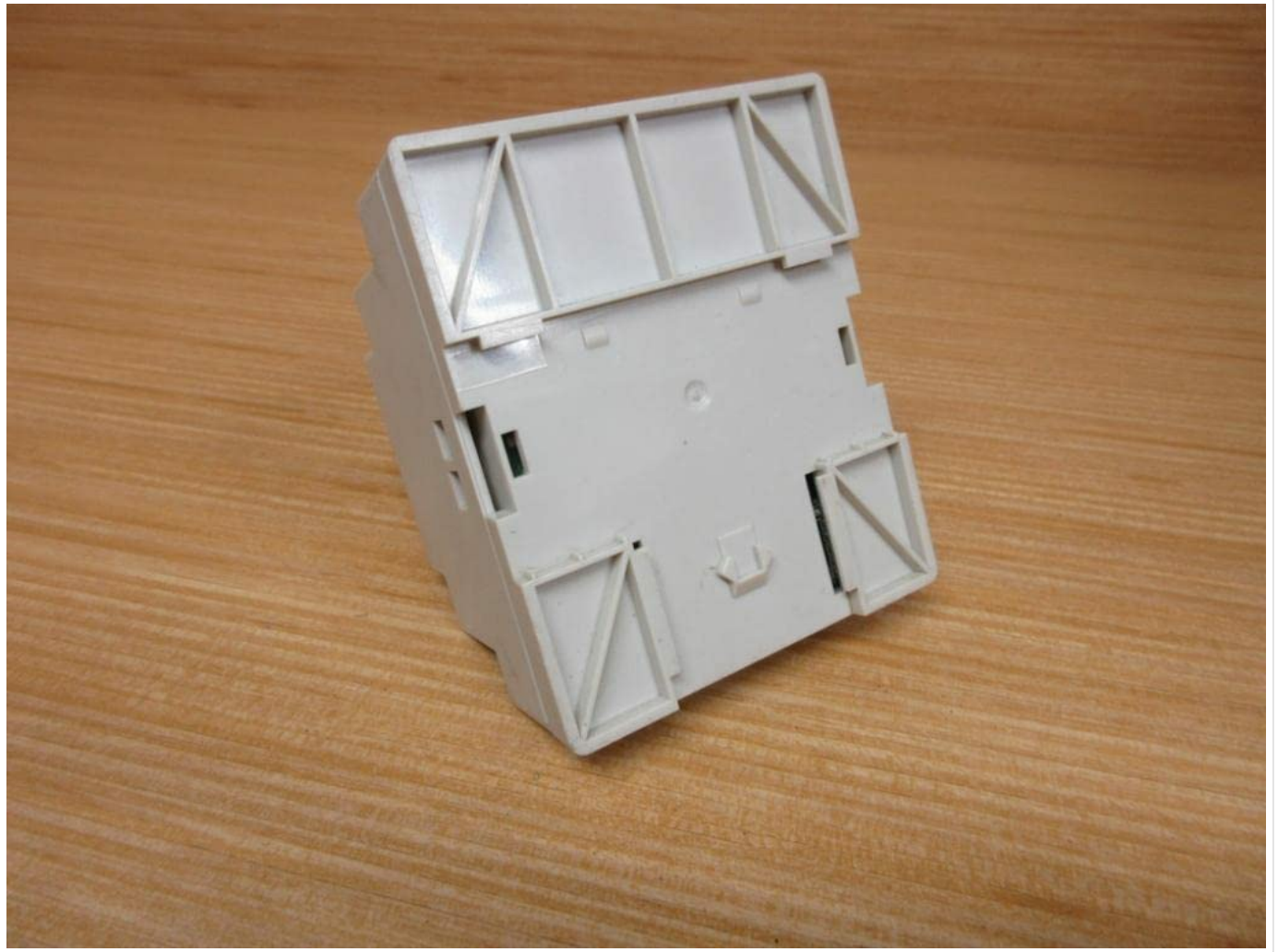


Figure 8.1: Bottom view of the DR-60-24, showing the DIN-Rail mounting mechanism and structural details.

9. WARRANTY AND SUPPORT

For warranty information and technical support, please refer to the official Mean Well website or contact your authorized distributor. Keep your purchase receipt as proof of purchase.

For further assistance, please visit the [Mean Well official website](#).

