

## REED PPR300

# REED PPR300 3-Inch Plastic Pipe Fitting Reamer Instruction Manual

Model: PPR300

## 1. INTRODUCTION

---

This manual provides essential instructions for the safe and effective use of the REED PPR300 3-Inch Plastic Pipe Fitting Reamer. This tool is designed to remove broken or excess plastic pipe material from fittings, allowing for reuse of the fitting.

## 2. SAFETY INFORMATION

---

Always prioritize safety when operating any power tool. Failure to follow these instructions may result in injury or damage to the tool or property.

- Wear appropriate personal protective equipment, including safety glasses and gloves.
- Ensure the workpiece is securely clamped or held to prevent movement during operation.
- Keep hands and loose clothing away from rotating parts.
- Use the reamer only with compatible drills (standard, cordless, or impact drills).
- **WARNING:** PPR Fitting Reamers are **NOT** recommended for use on pressurized systems.
- Do not force the tool. Allow the reamer to cut at its own pace.
- Disconnect the drill from its power source before changing accessories or performing maintenance.

## 3. PRODUCT FEATURES

---

- Reams 3-Inch Schedule 40 PVC, CPVC, and ABS fittings.
- Compatible with standard drills, cordless drills, and impact drills.
- Effective for vent lines, drain lines, and water lines (non-pressurized).
- Features a 4-sided carbide insert for extended cutting life.



Figure 1: Top view of the REED PPR300 reamer, showing the hexagonal shank and the cutting head.

## 4. SETUP

---

1. **Prepare the Pipe:** Before reaming, cut the broken pipe flush with the fitting. A hacksaw or battery grinder with a metal cutting blade can be used for this. Ensure the cut is as flat as possible.
2. **Insert into Drill:** Securely insert the reamer's hexagonal shank into the chuck of your drill. Ensure the chuck is tightened firmly to prevent slippage. A 1/2-inch drill is recommended for better grip, though a 3/8-inch drill may also work.
3. **Secure the Fitting:** If possible, secure the fitting to prevent it from moving during the reaming process. For vertical pipes, ensure stability.

## 5. OPERATING INSTRUCTIONS

- 
1. **Initial Placement:** Carefully center the reamer over the pipe stub inside the fitting.
  2. **Drill Speed and Pressure:** Set your drill to a low speed. Apply light, consistent pressure. Avoid excessive force, as this can cause the tool to jump or melt the plastic instead of cutting.
  3. **Lubrication:** To prevent the plastic from melting and to ensure a clean cut, lubricate the reamer with cold water periodically during operation. Dribble cold water onto the cutting head.
  4. **Clear Shavings:** Frequently lift the reamer in and out of the fitting to clear plastic shavings. For vertical pipes, use a shop vacuum to remove shavings and prevent them from falling into the drain system.
  5. **Monitor Depth:** Do not ream all the way through the fitting. Leave approximately 1/8 to 3/16 of an inch of the original socket at the bottom. This provides a stop for the new pipe and helps maintain the integrity of the connection.
  6. **Smooth Finish:** The reamer is designed to leave a smooth surface. After reaming, inspect the fitting for any rough edges.



Figure 2: Angled view of the REED PPR300 reamer, highlighting the carbide cutting insert.

## 6. MAINTENANCE

---

- **Carbide Insert Rotation:** The PPR300 features a 4-sided carbide insert. If the cutting edge becomes dull, rotate the insert 180 degrees to expose a fresh cutting edge. Use the provided hex key for this procedure.
- **Cleaning:** After each use, clean the reamer to remove any plastic residue. This helps maintain its cutting efficiency and extends its lifespan.
- **Storage:** Store the reamer in a dry place to prevent corrosion and damage.





#04526

# Clean Ream Extreme®

*Plastic Pipe Fitting Reamer*

**PPR300**

*Escariador para conectores de tubos plásticos*

*Alésoir pour raccord de plastique*

• **Guaranteed for 1,000 Reams!\***



PIPE TOOLS & VISES  
SINCE 1896

• Carbide Blade

• Made in USA

*Reams 3" Schedule 40 PVC, CPVC & ABS Fittings*

*Remueve los residuos de los conectores de PVC, CPVC & ABS de 3"*

*Élimine les résidus des raccords en PVC, CPVC ou ABS de 3"*

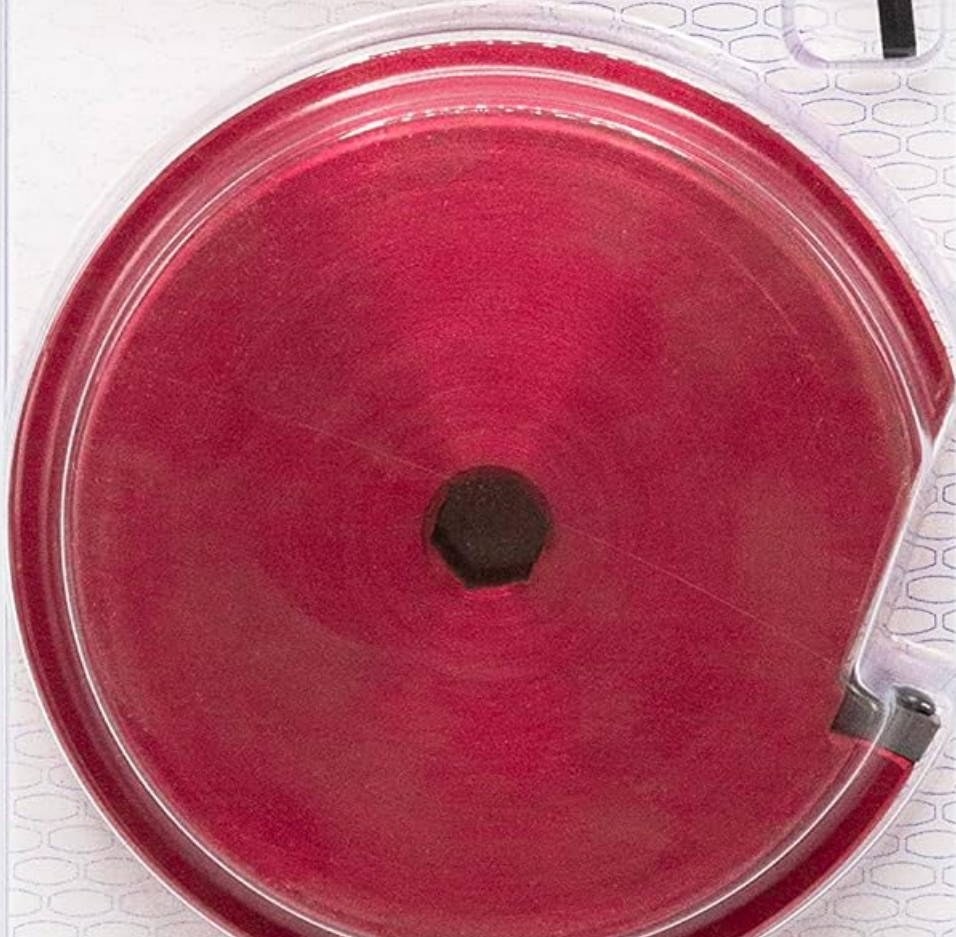




Figure 3: The REED PPR300 reamer shown in its retail packaging, including the hex key for carbide insert rotation.

## 7. TROUBLESHOOTING

Problem	Possible Cause	Solution
Reamer not cutting effectively or melting plastic.	Dull cutting edge, insufficient lubrication, excessive speed.	Rotate carbide insert to a fresh edge. Apply cold water lubrication. Reduce drill speed.
Tool jumps or vibrates excessively.	Loose in drill chuck, uneven pressure, unsecured workpiece.	Ensure reamer is tightly secured in drill chuck. Apply even, light pressure. Secure the fitting.
Plastic shavings accumulate and hinder cutting.	Normal operation, but not clearing debris.	Periodically lift the reamer to clear shavings. Use a shop vacuum for vertical applications.

## 8. SPECIFICATIONS

Model	PPR300
Reaming Capacity	3-Inch Schedule 40 PVC, CPVC, ABS Fittings
Material	Plastic (body), Carbide (insert)
Color	Red
Dimensions (L x W x H)	3 x 3 x 3 inches
Item Weight	1.1 Pounds
Manufacturer	Standard Plumbing Supply
UPC	757033045262

## 9. WARRANTY AND SUPPORT

The REED PPR300 Reamer is designed for durability and performance. It is guaranteed for 1,000 reams under normal operating conditions.

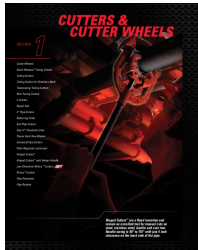
For technical support or inquiries, please refer to the official REED website or contact your authorized dealer. Contact information is not provided in this manual.

## Related Documents - PPR300



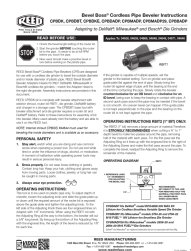
REED Rotary Pipe Cutter User Manual and Operating Instructions

Comprehensive user manual for REED Rotary Pipe Cutters (RC20, RC24, RC30, RC36, RC42), detailing operation, maintenance, parts lists, and warranty information.



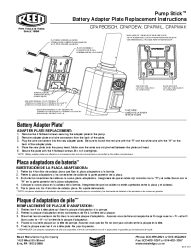
## Reed Pipe Cutters & Cutter Wheels Catalog

Explore the comprehensive range of Reed Manufacturing Company's pipe cutters and cutter wheels, including tubing cutters, soil pipe cutters, pneumatic saws, and more. Find detailed specifications, model numbers, and features for professional plumbing and industrial applications.



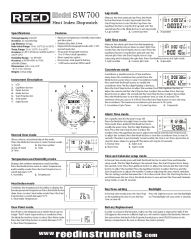
## REED Bevel Boss Cordless Pipe Beveler Instructions and Assembly Guide

Comprehensive instructions and assembly guide for REED Bevel Boss cordless pipe bevelers (CPBDK, CPBDBT, CPBDKE, CPBDADP, CPBMADP, CPBMADP29, CPBBADP) compatible with DeWalt, Milwaukee, and Bosch die grinders. Includes safety, operating, and assembly procedures.



## REED Pump Stick Battery Adapter Plate Replacement Instructions

Step-by-step instructions from Reed Manufacturing Company for replacing the battery adapter plate on the Pump Stick, compatible with CPAPBOSCH, CPAPDEW, CPAPMIL, and CPAPMAK models.



[REED SW700 Heat Index Stopwatch User Manual and Features](#)

Detailed user manual for the REED SW700 Heat Index Stopwatch, covering specifications, features, modes like lap time, split time, countdown, alarm, temperature, humidity, heat index, and dew point measurements, along with battery replacement.

[REED Wrenches & Sockets Catalog](#)

Comprehensive catalog of REED Manufacturing Company's wrenches and sockets, featuring heavy-duty pipe wrenches, chain wrenches, aluminum pipe wrenches, strap wrenches, adjustable wrenches, torque wrenches, square drive ratchet wrenches, utility socket sets, extended sockets, 4-in-1 ratchet wrenches, 2-in-1 adjustable ratchet wrenches, dual socket wrenches, basin wrenches, one-hand wrenches, operator's wrenches, valve packing wrenches, valve wheel wrenches, smooth jaw wrenches, hydrant wrenches, and ratcheting hydrant wrenches.