

Manuals+

[Q & A](#) | [Deep Search](#) | [Upload](#)

manuals.plus /

- › [Bafx Products](#) /
- › [Bafx Products Wireless Bluetooth Diagnostic OBD2 Scanner User Manual](#)

Bafx Products BAFX3127

Bafx Products Wireless Bluetooth OBD2 Scanner User Manual

Model: BAFX3127

INTRODUCTION

The Bafx Products Wireless Bluetooth OBD2 Scanner is a diagnostic tool designed for use with Android phones. It allows users to read and clear Check Engine Light (CEL) codes, check emissions testing readiness, and access real-time vehicle sensor information. This device is ELM327 compliant and compatible with all consumer vehicles manufactured in the USA from 1996 onwards, supporting all OBD2 protocols including J1850 and ISO9141.



Image: The Bafx Products Wireless Bluetooth OBD2 Scanner, a compact black device with the brand logo and "OBDII Diagnostic Interface" text.

SETUP GUIDE

1. **Locate OBD2 Port:** Identify the OBD2 diagnostic port in your vehicle. This is typically located under the dashboard on the driver's side.
2. **Plug In Scanner:** Firmly plug the Bafx Products OBD2 scanner into the vehicle's OBD2 port. Ensure a secure connection.
3. **Start Vehicle:** Turn your vehicle's ignition to the "ON" position or start the engine.
4. **Enable Bluetooth:** On your Android device, go to your Bluetooth settings and enable Bluetooth.
5. **Pair Device:** Search for available Bluetooth devices and select the Bafx Products scanner to pair. You may be prompted for a PIN (common PINs are 1234 or 0000).
6. **Install 3rd Party App:** Download and install a compatible 3rd party OBD2 app from the Google Play Store. Recommended free app: Piston. Recommended paid apps: Torque Pro (Not Torque Lite), OBD Fusion, Car Scanner, and OBD Auto Doctor.
7. **Connect in App:** Open the installed app and follow its instructions to connect to the Bafx Products OBD2 scanner via Bluetooth.

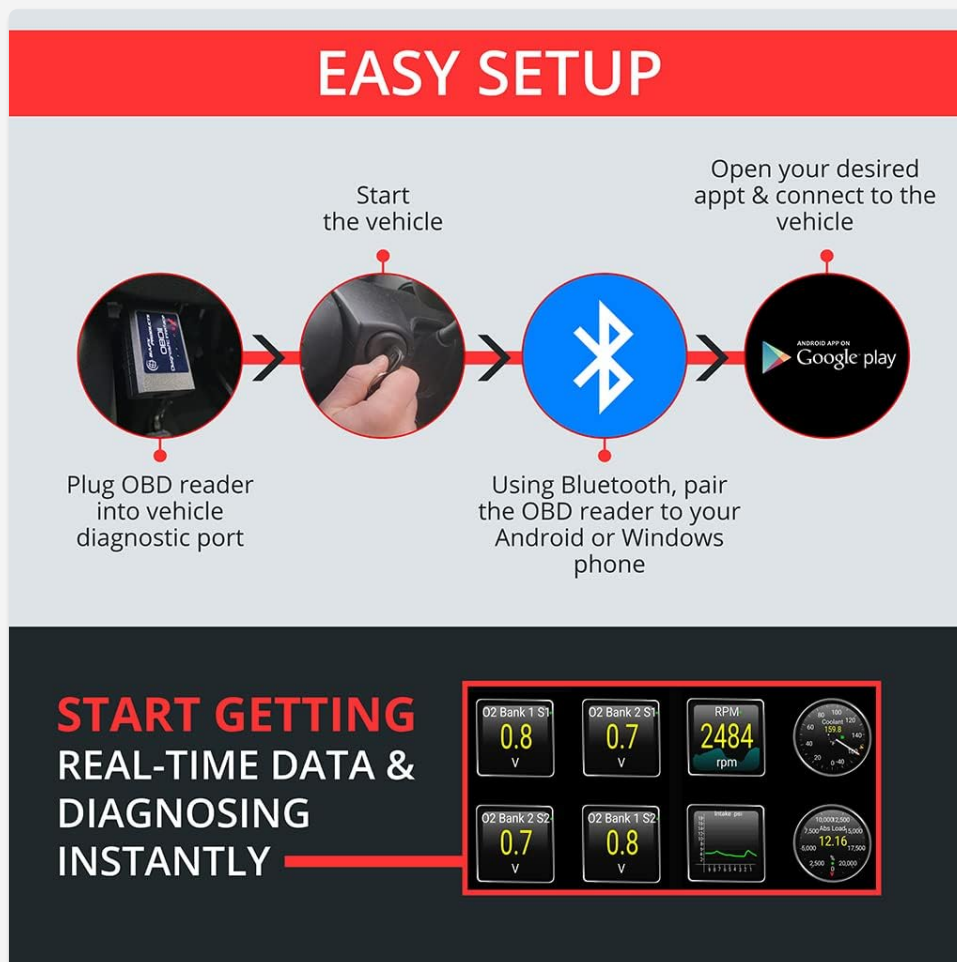


Image: A flowchart illustrating the easy setup process: Plug OBD reader into diagnostic port, start vehicle, pair via Bluetooth, open desired app, and connect.

OPERATING INSTRUCTIONS

Once connected, your 3rd party app will provide various diagnostic functionalities. The specific interface and features will vary by app, but common operations include:

- **Reading Engine Codes:** Access and view diagnostic trouble codes (DTCs) that have triggered your Check Engine

Light (CEL).

- **Clearing Engine Codes:** After addressing the underlying issue, use the app to clear the stored DTCs and turn off the CEL.
- **Emissions Readiness Check:** Determine if your vehicle is ready for an emissions test by checking the status of various monitoring systems.
- **Live Data Streams:** Monitor real-time sensor data such as engine RPM, vehicle speed, oxygen sensor readings, fuel system status, and more. This data can be displayed in various formats, including digital gauges and graphs.
- **Freeze Frame Data:** View a snapshot of sensor data recorded at the moment a fault code was set, which can help in diagnosing intermittent issues.
- **Vehicle Information:** Retrieve vehicle information such as VIN (Vehicle Identification Number), calibration IDs, and calibration verification numbers.



Image: A screenshot of a diagnostic app interface on an Android phone, showing a fault log, emissions readiness, and various diagnostic functions like reading/erasing codes and live data feeds.

COMPLETE OBDII DIAGNOSTICS



Read/Repair/Clear
Check Engine Lights



Complete Emissions
Test BEFORE You Go



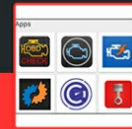
Live Real-Time Data
In Easy To Read Graphs



Supports ALL OBDII
Protocols
(Even J1850!)



Works With ALL 1996 &
Newer Vehicles in USA



Large Selection of
Free & Paid Apps



Image: A graphic summarizing the complete OBDII diagnostic features, including reading/clearing check engine lights, emissions testing, live real-time data, support for all OBDII protocols, and compatibility with 1996+ vehicles in the USA.

MAINTENANCE

The Bafx Products OBD2 Scanner requires minimal maintenance. To ensure longevity and proper function:

- **Storage:** Store the device in a cool, dry place away from direct sunlight and extreme temperatures.
- **Cleaning:** Use a soft, dry cloth to clean the exterior of the device. Do not use liquid cleaners or solvents.
- **Connection:** Ensure the OBD2 port in your vehicle is clean and free of debris before plugging in the scanner.

TROUBLESHOOTING

If you encounter issues with your Bafx Products OBD2 Scanner, consider the following common solutions:

- **Device Not Connecting:**
 - Ensure the scanner is firmly plugged into the OBD2 port.
 - Verify your vehicle's ignition is "ON" or the engine is running.
 - Check that Bluetooth is enabled on your Android device.
 - Confirm the correct 3rd party app is installed and configured to connect to the scanner.
 - Restart both your Android device and the vehicle.
- **"Android Phones ONLY":** This scanner is designed exclusively for Android devices. It is NOT compatible with iOS (Apple) devices. For iOS compatibility, a WiFi OBD reader is required.
- **No Data or Incorrect Readings:**
 - Ensure your 3rd party app is up-to-date.
 - Some older vehicles or specific vehicle modules might not support all data parameters.
 - Verify the app's settings for vehicle profile and connection type.
- **Compatibility with OBD2 Protocols:** The Bafx Products scanner is designed to work with ALL OBD2 Protocols, including J1850 PWM, J1850 VPW, ISO 9141, KWP 2000, ISO 15765 (CAN), and SAE J2480 (CAN). If you suspect a protocol issue, ensure your vehicle is OBD2 compliant (1996+ in USA).

**ALL OBD II
PROTOCOLS
SUPPORTED**



OTHER BRANDS



BAFXPRODUCTS

J1850 PWM

?



J1850 VPW

?



ISO 9141

?



KWP 2000



ISO 15765 (CAN)



SAE J2480 (CAN)



Image: A comparison chart showing that Bafx Products OBDII Diagnostic Interface supports all major OBD II protocols, unlike some other brands.

SPECIFICATIONS

Feature	Detail
Brand	Bafx Products
Model	BAFX3127
Product Dimensions	2.75"L x 1.5"W x 1"H
Operating System Compatibility	Android Only
Connectivity	Bluetooth
Vehicle Compatibility	All consumer vehicles in USA 1996 & newer (Gasoline or Diesel)
OBD2 Protocol Support	All OBD2 Protocols (J1850 PWM, J1850 VPW, ISO 9141, KWP 2000, ISO 15765 (CAN), SAE J2480 (CAN))
ELM327 Compliant	Yes
Item Weight	2.46 ounces

WARRANTY AND SUPPORT

Every Bafx Products OBD2 reader is backed with a **2-year warranty**. For any questions, technical assistance, or warranty claims, please contact our friendly USA-based support staff. Refer to the product packaging or the Bafx Products official website for the most current contact information.