

Bosch PHC9590

Bosch ProSalon S-Wave Styler PHC9590 User Manual

INTRODUCTION

Welcome to the user manual for your Bosch ProSalon S-Wave Styler PHC9590. This ceramic hair styler is designed to create beautiful S-wave hairstyles. Please read these instructions carefully before first use to ensure safe and effective operation. Keep this manual for future reference.

IMPORTANT SAFETY INSTRUCTIONS

- Always unplug the appliance immediately after use and before cleaning.
- Do not use while bathing or in a shower.
- Do not place or store the appliance where it can fall or be pulled into a tub or sink.
- Do not place in or drop into water or other liquid.
- Do not reach for an appliance that has fallen into water. Unplug immediately.
- Close supervision is necessary when this appliance is used by, on, or near children or individuals with certain disabilities.
- Use this appliance only for its intended use as described in this manual. Do not use attachments not recommended by the manufacturer.
- Never operate this appliance if it has a damaged cord or plug, if it is not working properly, or if it has been dropped or damaged, or dropped into water.
- Keep the cord away from heated surfaces. Do not wrap the cord around the appliance.
- Never use while sleeping.
- Never drop or insert any object into any opening.
- Do not use outdoors or operate where aerosol (spray) products are being used or where oxygen is being administered.
- Do not use an extension cord with this appliance.
- The appliance is hot when in use. Do not let eyes or bare skin touch heated surfaces.

- Do not place the heated appliance directly on any surface while it is hot or plugged in.

PRODUCT OVERVIEW

Familiarize yourself with the components of your Bosch ProSalon S-Wave Styler PHC9590.



Image: Full view of the Bosch ProSalon S-Wave Styler PHC9590, showing the fuchsia-apple green handle, control panel, and black ceramic styling plates.

- **Ceramic Styling Plates:** Designed for even heat distribution and smooth gliding through hair.
- **Temperature Control:** Buttons to adjust the heat setting.
- **On/Off Switch:** To power the device.
- **Swivel Cord:** For flexible use without tangling.



Image: Close-up view of the ceramic styling plates of the Bosch S-Wave Styler, showing their unique S-wave shape.

SETUP

1. **Unpack:** Carefully remove the S-Wave Styler from its packaging.
2. **Inspect:** Check the appliance for any signs of damage. Do not use if damaged.
3. **Placement:** Place the styler on a heat-resistant, flat surface.
4. **Plug In:** Insert the power plug into a suitable electrical outlet. Ensure your mains voltage matches the voltage specified on the appliance.

OPERATING INSTRUCTIONS

Follow these steps to achieve desired S-wave hairstyles.

1. **Prepare Hair:** Ensure your hair is clean, dry, and detangled. For best results, apply a heat protectant spray.
2. **Power On:** Press the "on/off" button to switch on the styler. The indicator light will illuminate.
3. **Set Temperature:** Use the temperature control buttons (+/-) to select your desired heat setting. The maximum temperature is 200°C. Allow the styler to heat up for approximately 50 seconds.
4. **Section Hair:** Divide your hair into small, manageable sections, about 1-2 inches wide.

5. **Style:**

- Open the styling plates and place a section of hair between them, close to the roots.
- Gently clamp the hair, ensuring the S-wave shape of the plates creates the desired pattern.
- Hold for a few seconds (typically 5-10 seconds, depending on hair type and desired wave intensity).
- Release the hair and move the styler down to the next section of the same strand, overlapping slightly to create a continuous wave.
- Repeat this process along the entire length of the hair section.



Image: A section of brown hair being clamped between the S-wave styling plates of the Bosch styler to create a wave pattern.

6. **Finish:** Once all sections are styled, allow your hair to cool completely before touching or brushing to set the waves. You may apply a light hairspray for extra hold.
7. **Power Off:** Press the "on/off" button to switch off the styler and unplug it from the power outlet.

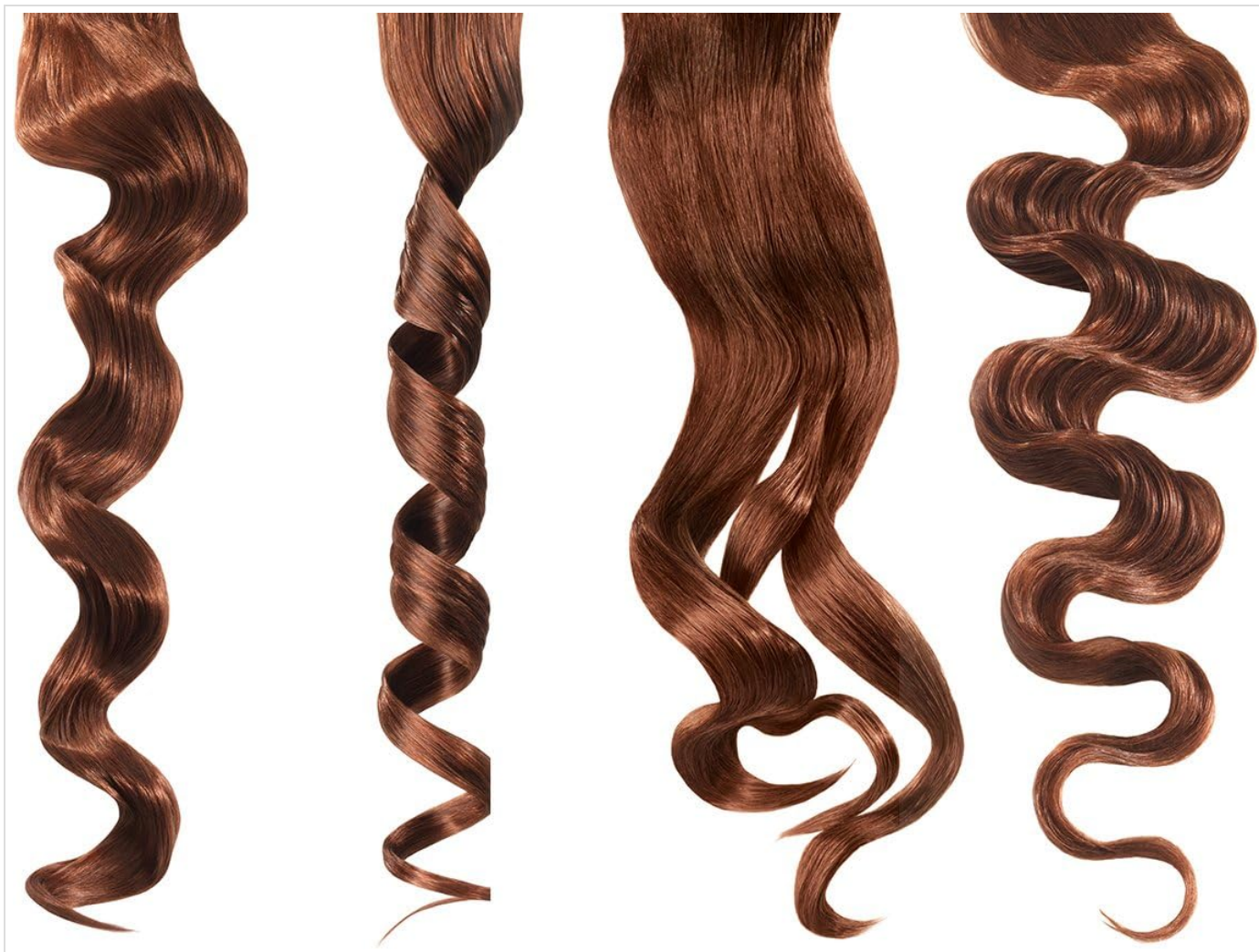


Image: Various examples of S-wave and curly hairstyles, demonstrating the potential results achievable with a hair styler.

MAINTENANCE

Proper care ensures the longevity and performance of your S-Wave Styler.

- **Cleaning:** Ensure the appliance is unplugged and completely cool before cleaning. Wipe the exterior surfaces with a soft, damp cloth. Do not use abrasive cleaners or solvents.
- **Storage:** Store the styler in a cool, dry place, away from moisture. Do not wrap the power cord tightly around the appliance, as this can damage the cord.
- **No User Serviceable Parts:** This appliance contains no user-serviceable parts. Do not attempt to repair it yourself. Contact authorized service personnel for any repairs.

TROUBLESHOOTING

Problem	Possible Cause	Solution
Styler does not heat up.	Not plugged in, power outlet fault, or appliance fault.	Check power connection. Try a different outlet. If problem persists, contact customer support.

Problem	Possible Cause	Solution
Waves are not holding.	Hair not completely dry, insufficient heat, or not holding long enough.	Ensure hair is dry. Increase temperature (if suitable for hair type). Hold styler on hair section for a few more seconds. Allow hair to cool completely after styling.
Hair gets snagged.	Hair not detangled, or styling plates are not clean.	Ensure hair is thoroughly detangled before styling. Clean styling plates as per maintenance instructions.

SPECIFICATIONS

Model: PHC9590

Brand: Bosch

Material: Ceramic

Color: Fuchsia-apple Green

Item Weight: 880 Grams

Power Source: Mains

Maximum Temperature Setting: 200°C

Heating Surface Material: Ceramic

Package Dimensions: 37.4 x 17 x 9.2 cm

Manufacturer: Robert Bosch Hausgeräte GmbH

Global Trade Item Number (GTIN): 04242002655772

WARRANTY AND SUPPORT

For warranty information and customer support, please refer to the warranty card included with your product or visit the official Bosch website. Do not attempt to repair the appliance yourself. Unauthorized repairs may void your warranty. For further assistance, please contact Bosch customer service.

