

AmScope MD35

AmScope MD35 0.3MP Digital Microscope Camera User Manual

Model: MD35

INTRODUCTION

This manual provides instructions for the setup, operation, and maintenance of your AmScope MD35 0.3MP Digital Microscope Camera. This device is designed to capture still images and stream live video from your microscope to a computer, enhancing your viewing and documentation capabilities.

The AmScope MD35 camera features a 0.3MP CMOS color sensor, 40x magnification, and connects via USB 2.0. It includes software compatible with Windows XP, Vista, 7, 8, and 10, offering advanced image processing functions.

PACKAGE CONTENTS

- AmScope MD35 Digital Microscope Camera
- High-speed USB 2.0 Cable
- Two Adapters (for 23mm, 30mm, or 30.5mm photo ports)
- Software CD (compatible with Windows XP/Vista/7/8/10)



Image: Contents of the AmScope MD35 package, including the camera, USB cable, software CD, and two adapters.

SETUP INSTRUCTIONS

1. Physical Installation

1. **Select Appropriate Adapter:** Identify the correct adapter (23mm, 30mm, or 30.5mm) that matches your microscope's eye tube or photo port diameter.
2. **Mount the Camera:** Slide the AmScope MD35 camera into the selected adapter. Then, insert the camera with the adapter into your microscope's ocular tube or dedicated photo port.



Image: Close-up view of the AmScope MD35 digital camera securely mounted into a microscope's eyepiece tube.

2. Software Installation

1. **Insert Software CD:** Place the provided software CD into your computer's CD/DVD drive.
2. **Run Installer:** Follow the on-screen instructions to install the AmScope software. The software is compatible with Windows XP, Vista, 7, 8, and 10 (both 32-bit and 64-bit versions).
3. **Restart Computer:** It is recommended to restart your computer after the software installation is complete.

3. Connecting to Computer

1. **Connect USB Cable:** Plug one end of the high-speed USB 2.0 cable into the camera's USB port and the other end into an available USB 2.0 port on your computer.
2. **Launch Software:** Open the AmScope software application on your computer. The software should automatically detect the connected camera.

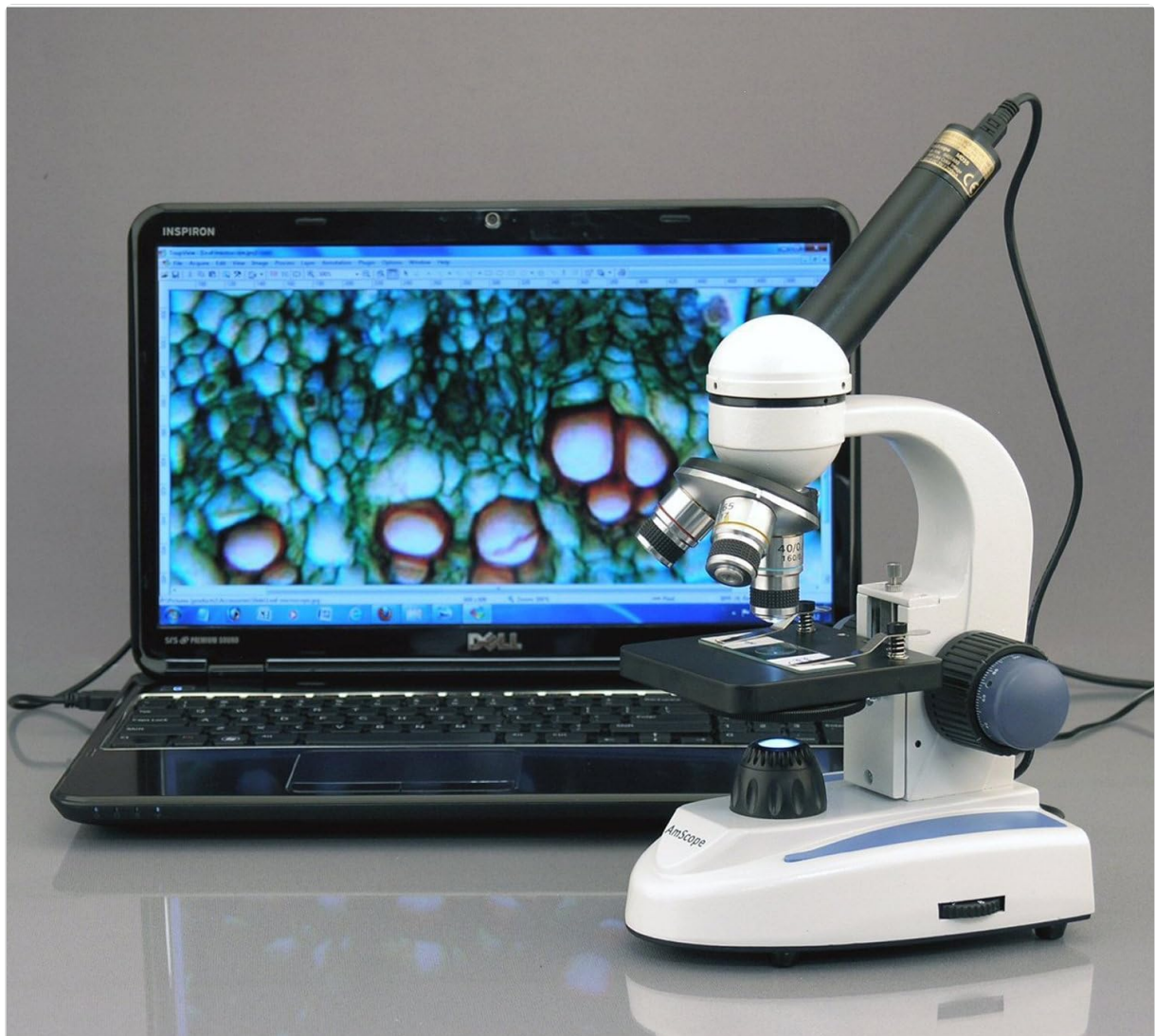


Image: A microscope with the AmScope MD35 camera connected via USB to a laptop, displaying a live microscopic image on the screen.

OPERATING INSTRUCTIONS

Once the camera is installed and the software is running, you can begin capturing images and videos.

1. Live View and Focus

- Ensure your microscope is properly illuminated and a specimen is placed on the stage.
- Adjust the microscope's focus knobs until a clear image appears on your computer screen. The camera provides 40x magnification.

2. Capturing Still Images

- Within the AmScope software, locate the "Capture" or "Snapshot" button.
- Click this button to capture a still image of the current live view. Images can be saved in various resolutions.

3. Recording Videos

- To record live video, find the "Record" button in the software interface.
- Click "Record" to start and "Stop" to end the video capture. Videos can be saved for later review.

4. Software Features

The AmScope software offers several advanced features for image and video processing:

- **Stitching:** Combine multiple images to create a wider field of view.
- **EDF (Extended Depth of Focus):** Merge images taken at different focal planes to create a single image with greater depth of field.
- **Image Editing:** Tools similar to PhotoShop for adjusting brightness, contrast, color, and other image properties.
- **Annotations:** Add notes, shapes, and watermarks to your images for documentation and presentation.

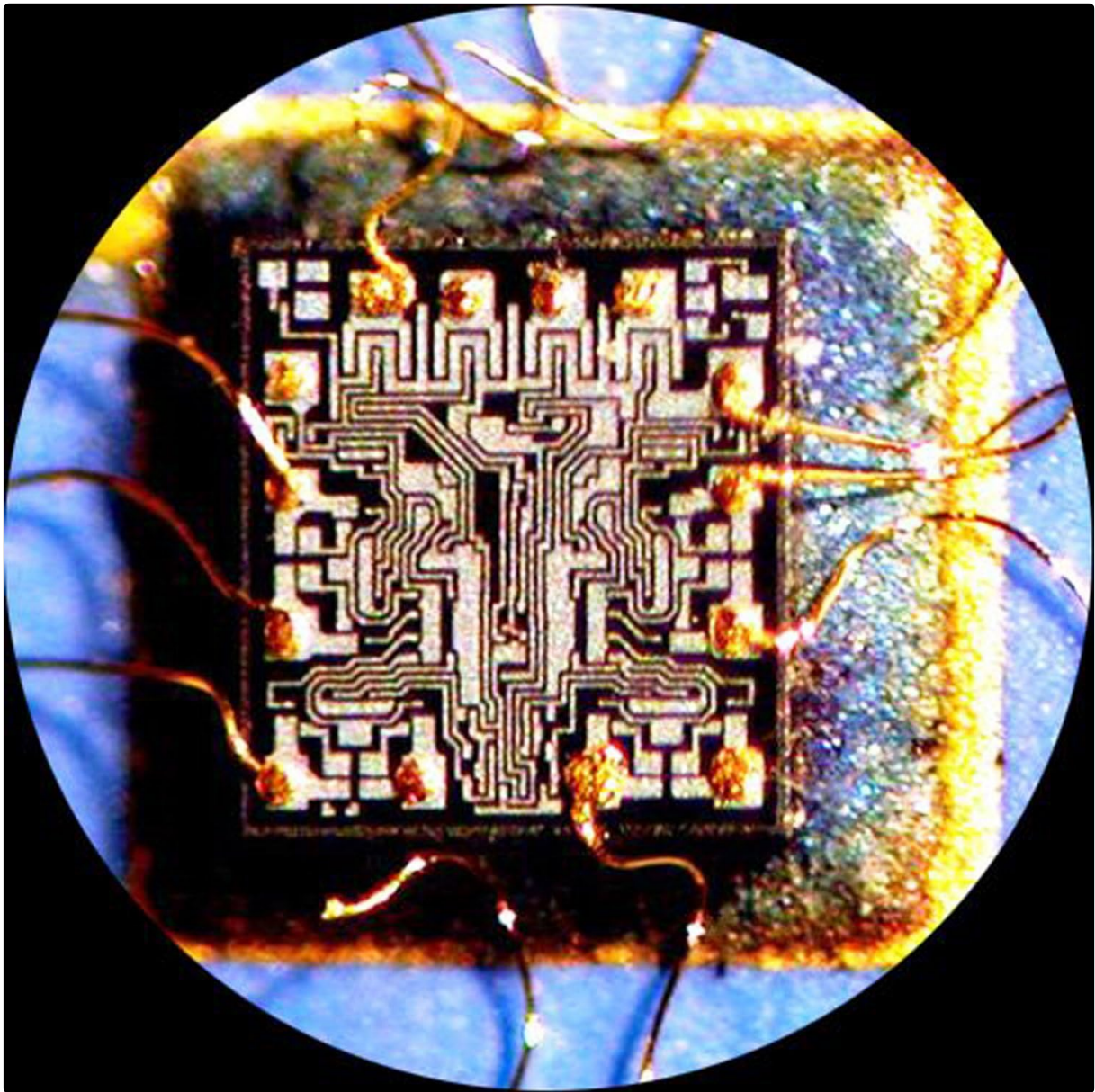


Image: An example of a detailed microscopic image, likely a microchip, captured using the AmScope MD35 camera.

MAINTENANCE

Proper care ensures the longevity and optimal performance of your AmScope MD35 camera.

- **Cleaning:** Use a soft, lint-free cloth to gently wipe the camera body. For the lens, use specialized lens cleaning solutions and cloths to avoid scratches.
- **Storage:** When not in use, store the camera in a dry, dust-free environment. Keep the lens cap on to protect the sensor.
- **Handling:** Avoid dropping or subjecting the camera to strong impacts. Handle the USB cable carefully to prevent damage to the connectors.

TROUBLESHOOTING

If you encounter issues with your AmScope MD35 camera, refer to the following common problems and solutions:

Problem: No Image Displayed / Screen Goes Blank

- **Check USB Connection:** Ensure the USB cable is securely connected to both the camera and the

computer. Try a different USB port.

- **Verify Software Detection:** In the AmScope software, confirm that the camera is selected as the active device.
- **Restart Software/Computer:** Close and reopen the AmScope software. If the problem persists, restart your computer.
- **Reinstall Drivers:** If the issue is persistent, consider reinstalling the camera drivers from the provided software CD or the manufacturer's website.

Problem: Poor Image Quality

- **Adjust Microscope Focus:** Ensure the microscope itself is properly focused for the camera.
- **Clean Lenses:** Check and clean the microscope's objective lenses and the camera's sensor/lens for dust or smudges.
- **Lighting:** Adjust the microscope's illumination for optimal brightness and contrast.
- **Software Settings:** Within the AmScope software, adjust image parameters like brightness, contrast, and white balance.

Problem: Software Not Launching or Crashing

- **System Requirements:** Ensure your computer meets the minimum system requirements for the software (Windows XP/Vista/7/8/10).
- **Antivirus/Firewall:** Temporarily disable antivirus or firewall software to see if it's interfering with the application.
- **Reinstall Software:** Perform a clean reinstallation of the AmScope software.

SPECIFICATIONS

Feature	Detail
Model	MD35
Sensor Resolution	0.3 Megapixels (640x480 pixels)
Magnification	40x
Mounting Size	23mm, 30mm, 30.5mm eye tube/photo port
Interface	USB 2.0
Software Compatibility	Windows XP/Vista/7/8/10 (32-bit & 64-bit)
Power Source	USB powered (5 Volts)
Material	Metal
Product Dimensions	8.4 x 6.4 x 4.8 inches
Item Weight	8 ounces
Manufacturer	United Scope LLC.

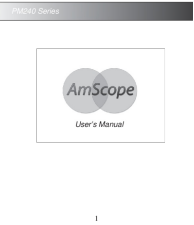




WARRANTY AND SUPPORT

For warranty information or technical support, please contact AmScope directly or refer to the

documentation included with your purchase. The manufacturer is United Scope LLC.
Please visit the official AmScope website for the latest software updates and support resources.

© 2025 AmScope. All rights reserved.

Related Documents - MD35

	<p>AmScope PM240 Series Stereo Microscope User Manual</p> <p>User manual for the AmScope PM240 Series stereo microscopes, covering setup, operation, specifications, and troubleshooting for binocular and trinocular models.</p>
	<p>AmScope 150 Series Microscope User Manual</p> <p>Comprehensive user manual for the AmScope 150 Series microscope, detailing setup, operation, specifications, parts, and troubleshooting for optimal use.</p>
	<p>AmScope DM150-W Full HD Digital Compound Microscope User Manual</p> <p>Comprehensive user manual for the AmScope DM150-W Full HD Digital Compound Microscope, covering setup, operation, safety, and maintenance for optimal use.</p>
	<p>AmScope M150 Series Microscope User Manual</p> <p>User manual for the AmScope M150 Series microscopes, covering setup, operation, maintenance, specifications, and troubleshooting.</p>
	<p>AmScope 120 Series Microscope User Manual</p> <p>Comprehensive user manual for the AmScope 120 Series microscopes, covering setup, operation, specifications, and troubleshooting for models like B120 and T120.</p>



[AmScope SM-1 Series Stereo Microscope User Manual](#)

Comprehensive user manual for the AmScope SM-1 Series stereo microscopes, covering setup, operation, specifications, and troubleshooting for models like SM-1B/T, SM-1TS/BS, and SM-1(B/T)-PL.