

Manuals+

[Q & A](#) | [Deep Search](#) | [Upload](#)

[manuals.plus](#) /

- › [Amerec](#) /
- › [Amerec KT60/K60 Digital Controls User Manual](#)

Amerec DKT60/K60-PB

Amerec KT60/K60 Digital Controls User Manual

Model: DKT60/K60-PB

INTRODUCTION

This manual provides essential information for the installation, operation, and maintenance of your Amerec KT60/K60 Digital Controls. These dual 3-button digital controls are designed to display temperature and time, offering precise management of your steam environment. The system includes both an internal control (KT60 with integral temperature sensor) and an external control (K60), along with necessary cables and a Comfort Flo steam head.

SETUP AND INSTALLATION

The Amerec KT60/K60 Digital Control system is designed for integration with Amerec steam generators. Proper installation is crucial for optimal performance and safety. It is highly recommended that installation be performed by a qualified electrician or service technician.

- The **KT60 control** features an integral temperature sensor and is designed to be mounted inside the steam room.
- The **K60 control** is intended for mounting outside the steam room.
- Ensure all cables are securely connected between the controls and the steam generator as per the detailed wiring diagrams provided in the full installation manual.
- The Comfort Flo steam head should be installed according to the separate instructions provided with the steam generator.



Image: The Amerec KT60/K60 Digital Controls, showing the polished brass finish and the digital display with "114" degrees, along with "TIME", "ON/OFF", and "TEMP" buttons. The image displays the front and side views of the control units.

OPERATING INSTRUCTIONS

The KT60/K60 controls provide intuitive operation for your steam bath experience.

1. **Power On/Off:** Press the **ON/OFF** button to activate or deactivate the steam generator. The digital display will illuminate when the unit is active.
2. **Adjusting Temperature:** Press the **TEMP** button. The display will show the current set temperature. Use the up/down arrows (if present, or repeated presses of TEMP/TIME buttons in some models) to adjust the temperature up to 125° F. The display will revert to showing the actual room temperature once set.
3. **Adjusting Time:** Press the **TIME** button. The display will show the current set duration. Use the up/down arrows (or repeated presses) to adjust the steam session duration up to 60 minutes. The display will show the remaining time during operation.
4. **Display:** The digital display continuously shows the current temperature or remaining time, depending on the mode selected or during idle operation.

MAINTENANCE

Regular maintenance ensures the longevity and optimal performance of your Amerrec digital controls.

- **Cleaning:** To clean the polished brass finish, use a soft, damp cloth. Avoid abrasive cleaners, solvents, or harsh chemicals, as these can damage the finish and electronic components.
- **Inspection:** Periodically inspect the control units and cables for any signs of wear or damage. If any damage is observed, contact a qualified technician for repair or replacement.

TROUBLESHOOTING

If you encounter issues with your Amerrec KT60/K60 Digital Controls, consider the following basic troubleshooting steps:

- **No Power/Display Off:**
 - Check the main power supply to the steam generator.
 - Ensure all control cables are securely connected to both the controls and the generator.
 - Verify that the circuit breaker for the steam unit has not tripped.
- **Incorrect Temperature Reading:**
 - Ensure the KT60 control (with the integral sensor) is properly installed inside the steam room and not obstructed.
 - Avoid placing the sensor near direct steam output or drafts that could affect readings.
- **Controls Unresponsive:**
 - Try cycling the power to the steam generator (turn off at the breaker for a few minutes, then turn back on).
 - If issues persist, consult the comprehensive troubleshooting guide in the full product manual or contact Amerrec customer support.

SPECIFICATIONS

Feature	Detail
Manufacturer	Amerrec
Part Number	DKT60/K60-PB

Feature	Detail
Item Weight	3.75 pounds
Package Dimensions	11.8 x 9.1 x 3.2 inches
Item Model Number	DKT60/K60-PB
Color	Polished Brass
Style	Modern
Item Package Quantity	1
Adjustable Time Duration	Up to 60 minutes
Adjustable Temperature	Up to 125° F

WARRANTY INFORMATION

The Amerec KT60/K60 Digital Controls come with a limited warranty:

- **Parts:** Five (5) years
- **Labor:** Two (2) years


Please retain your proof of purchase for warranty claims. For full warranty terms and conditions, refer to the documentation included with your product or visit the official Amerec website.


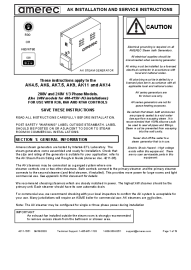
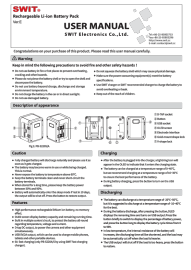
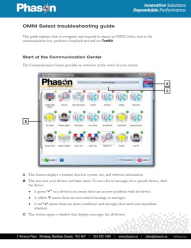

CUSTOMER SUPPORT

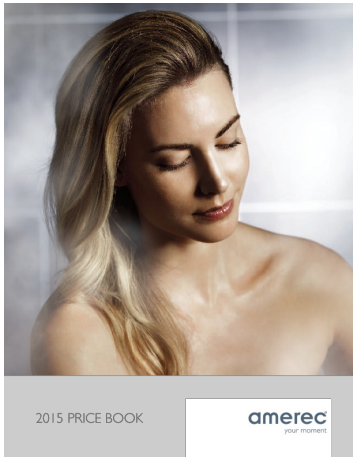
For technical assistance, service, or to order replacement parts, please contact Amerec customer support or an authorized service center. Contact information can typically be found on the manufacturer's website or in the original product packaging.

When contacting support, please have your product model number (DKT60/K60-PB) and serial number (if applicable) ready.

Related Documents - DKT60/K60-PB

	<p>Wilo-PB Pressure Boosting System Installation and Operating Instructions</p> <p>This document provides comprehensive installation and operating instructions for the Wilo-PB pressure boosting system, designed for domestic applications. Available in multiple languages.</p>
---	--

	<p>Wilo-PB Domestic Water Pressure Booster Pump - Installation & Operating Manual</p> <p>Official installation and operating manual for Wilo-PB domestic water pressure booster pumps. Covers safety guidelines, technical specifications, installation procedures, maintenance, and troubleshooting for various models.</p>
	<p>Amerec AK Steam Generator Installation and Service Instructions</p> <p>A comprehensive guide for installing and servicing Amerec AK series steam generators (AK4.5, AK6, AK7.5, AK9, AK11, AK14). Covers safety precautions, mounting, plumbing, wiring, control options, and operational testing. Includes details for single and multi-generator systems.</p>
	<p>SWIT PB-S220S/A Rechargeable Li-ion Battery Pack User Manual</p> <p>Comprehensive user manual for the SWIT PB-S220S/A Rechargeable Li-ion Battery Pack, detailing safety precautions, features, charging and discharging information, OLED screen functions, and technical specifications.</p>
	<p>Phason OMNI Select Troubleshooting Guide: Alarms, Communication, and ToolKit</p> <p>A comprehensive guide to troubleshooting Phason OMNI Select systems, covering alarm recognition, communication loss, loopback tests, utilizing the ToolKit, and resolving issues with Power Blocks and Wireless Adapters (PWAs).</p>
	<p>Amerec AK Series Steam Generator Specification Sheet</p> <p>Detailed specification sheet for Amerec AK Series steam generators, covering performance features, control options (K60, KT60), sizing and rough-in guide, electrical and plumbing requirements, and installation instructions.</p>



[\[pdf\]](#) Instructions Accessories

Layout 1 Download Amerec K60 CP Instructions Assembly amerec2013 conelyco |||

2015 PRICE BOOK ENJOY THE AFFORDABLE, HEALTHY BENEFITS OF STEAM BATHING Steam is an easy and aff ... oom. Dual control kit includes two controls, cables and ComfortFlo steam head. Model DKT60/K60-CP **DKT60/K60-PB** DKT60/K60-PN DKT60/K60-BN DKT60/K60-ORB Finish Polished Chrome Polished Brass Polished...

lang:en **score:41** filesize: 2.27 M page_count: 28 document date: 2014-11-18