

Bemis 500EC 390

BEMIS 500EC 390 Round Toilet Seat Instruction Manual

Model: 500EC 390 | Brand: Bemis

INTRODUCTION

This Bemis closed front toilet seat with cover is crafted from molded wood, featuring a multi-coat enamel finish for enhanced durability. It incorporates color-matched Easy Clean & Change hinges with non-corrosive, top-tightening bolts and wing nuts, designed for both stability and ease of maintenance. The seat is equipped with two color-matched bumpers for added stability.

SETUP AND INSTALLATION

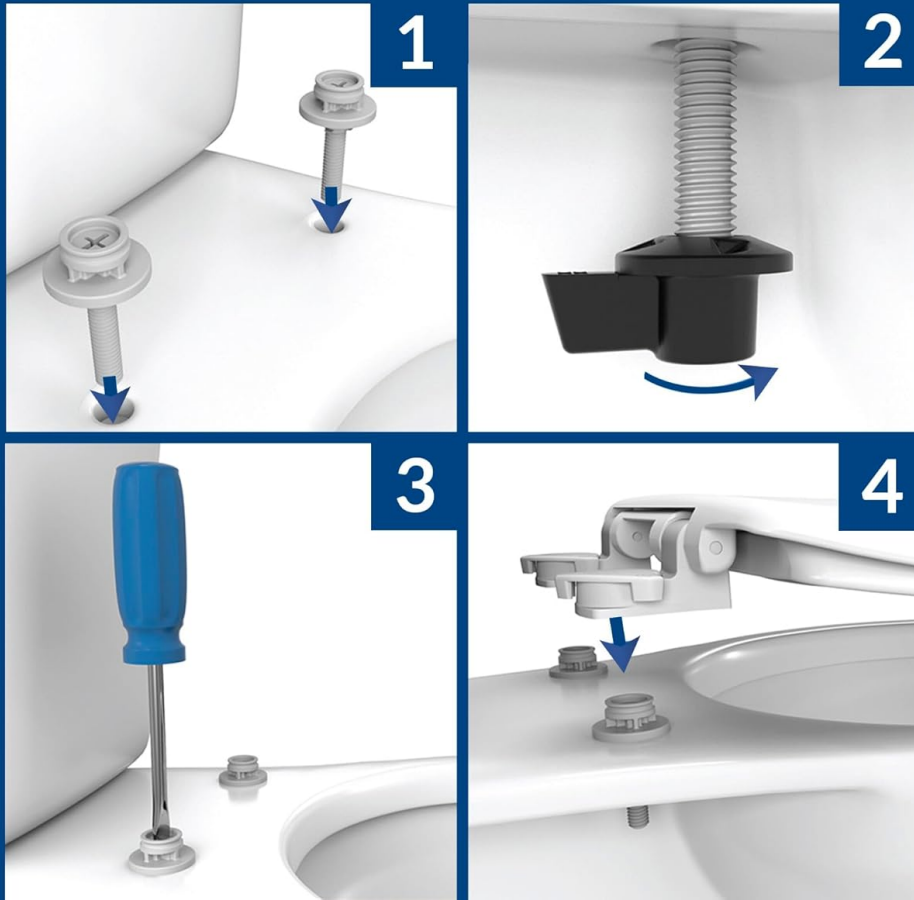
The BEMIS 500EC 390 toilet seat is designed for quick and easy installation, requiring no professional assistance. Follow these steps for a confident DIY upgrade:

- 1. Prepare the Toilet:** Ensure the toilet bowl is clean and dry. If replacing an old seat, remove it by unscrewing the existing bolts.
- 2. Position the Hinges:** Place the new hinges over the bolt holes on the toilet bowl. Ensure they are aligned correctly.
- 3. Secure the Bolts:** Insert the non-corrosive, top-tightening bolts through the hinges and toilet bowl holes. From underneath the bowl, attach and tighten the wing nuts until the hinges are firmly secured. Do not overtighten.
- 4. Attach the Seat:** Align the toilet seat with the secured hinges and press down firmly until it clicks into place. The Easy Clean & Change hinges allow the seat to be easily attached and detached.

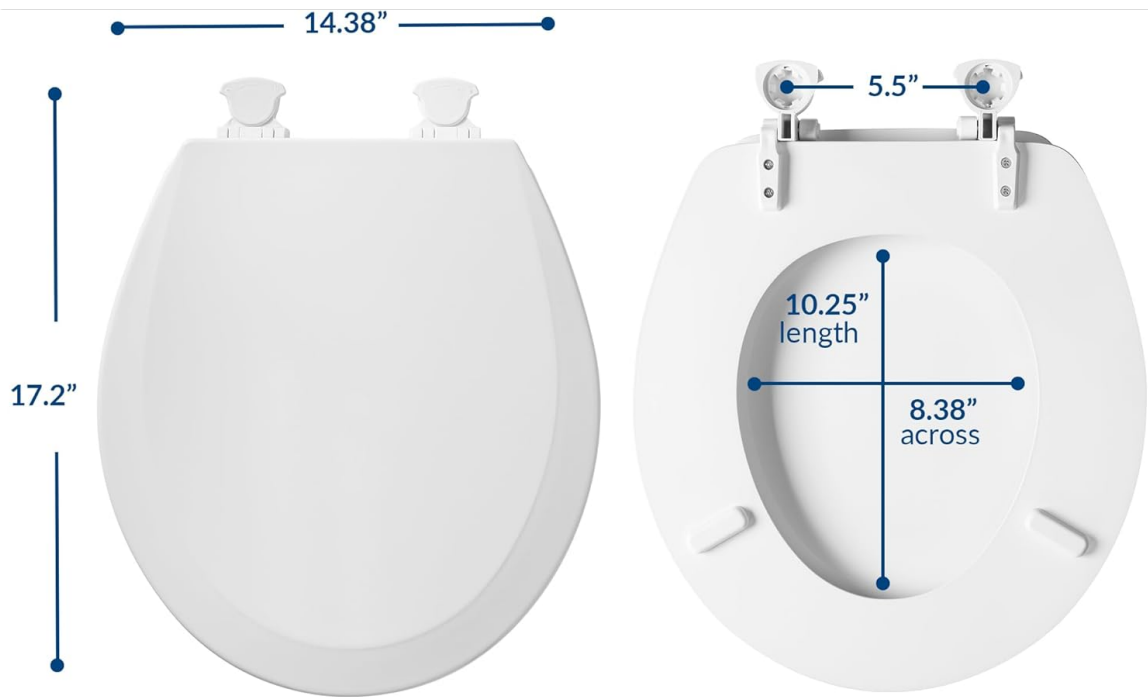
Easy Installation



Watch the installation video
on this page for more detail

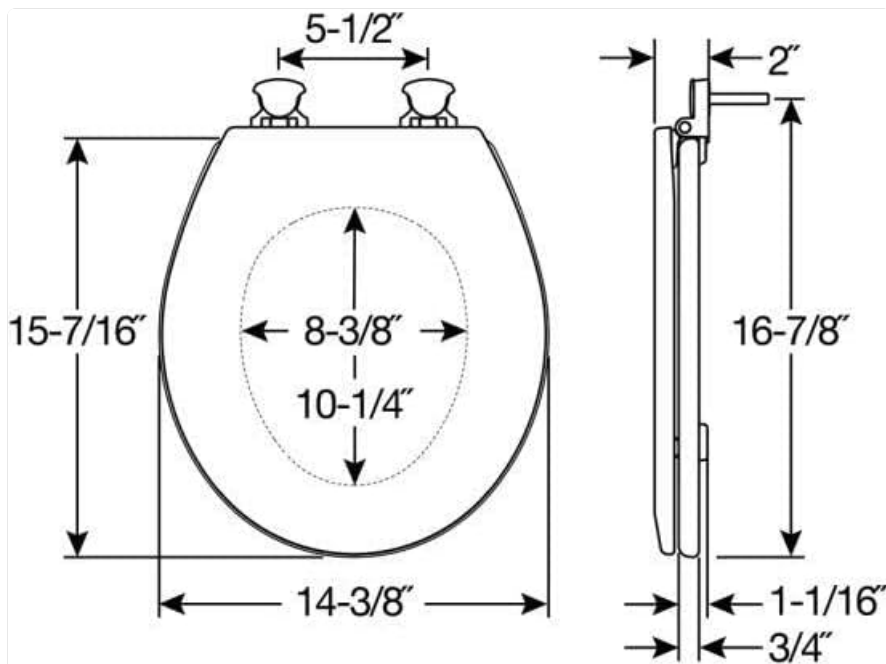


This visual guide demonstrates the simple four-step installation process for the BEMIS toilet seat, showing how to secure the bolts and attach the seat.



Round Product Dimensions

This diagram illustrates the key dimensions of the BEMIS round toilet seat, including its width of 14.38 inches and length of 17.2 inches, ensuring compatibility with standard round toilets.



A detailed technical line drawing providing precise measurements for the BEMIS toilet seat, useful for verifying fit and specifications.

OPERATING INSTRUCTIONS

The BEMIS 500EC 390 toilet seat is designed for comfortable and reliable daily use. Its sturdy molded wood construction ensures it can withstand heavy usage without cracking, warping, chipping, or staining. The round shape is compatible with all standard round toilet brands and models, providing a secure and stable seating surface.

To use, simply lift the seat and cover as needed. The robust hinges are designed for smooth operation and durability.

MAINTENANCE AND CLEANING

Maintaining the cleanliness and longevity of your BEMIS toilet seat is straightforward thanks to its Easy Clean & Change hinges. These hinges allow the seat to be easily released from the toilet bowl for thorough cleaning of both the seat and the hard-to-reach areas around the hinges.

Cleaning Steps:

1. **Release the Seat:** Gently lift the seat and cover. Locate the quick-release buttons or levers on the hinges and activate them to detach the seat from the mounting posts.
2. **Clean the Seat:** Use a soft cloth or sponge with gentle cleaners such as anti-bacterial wipes, dish soap, or anti-bacterial hand soap. Wipe down all surfaces of the seat and cover.
3. **Clean the Hinges and Bowl:** With the seat removed, thoroughly clean the mounting posts and the surrounding areas of the toilet bowl.
4. **Reattach the Seat:** Once clean and dry, align the seat with the mounting posts and press down until it securely clicks back into place.

Important: To preserve the seat's glossy finish and material integrity, **do not use bleach or harsh chemical cleaners**. Always opt for mild, non-abrasive cleaning solutions.



**Removes for
Easy Cleaning**



WOOD TOILET SEAT

This image shows the BEMIS toilet seat with its Easy Clean hinges, allowing for quick removal and thorough cleaning.



CLEANING YOUR TOILET SEAT

To preserve your seat's glossy finish, we recommend cleaning with either:

- Anti-bacterial wipes
- Dish soap
- Anti-bacterial hand soap

**Do Not Use
Bleach or Harsh Chemicals**

This image provides guidelines for cleaning the toilet seat, recommending anti-bacterial wipes, dish soap, or anti-bacterial hand soap, and advising against bleach or harsh chemicals.

TROUBLESHOOTING

- **Seat feels loose:** Ensure the mounting bolts are securely tightened. If the seat has quick-release hinges, ensure they are fully engaged and locked into place.
- **Difficulty detaching seat for cleaning:** Check that the quick-release buttons or levers on the hinges are fully activated. Apply gentle, even pressure when detaching.
- **Seat discolors or stains:** Avoid using harsh chemical cleaners, bleach, or abrasive pads. Use only mild soap and water or recommended gentle cleaners. Persistent stains may indicate prolonged exposure to harsh substances or improper cleaning.
- **Hinges appear corroded:** The hinges are designed to be non-corrosive. Ensure they are kept clean and dry. If corrosion occurs, contact customer support.

SPECIFICATIONS

Feature	Detail
Brand	Bemis
Model Number	500EC 390
Color	Cotton White
Material	Molded Wood
Shape	Round
Product Dimensions	16.5"L x 16.5"W (14.38" wide x 17.2" long for seat area)
Item Weight	2.88 Pounds
Hinges	Easy Clean & Change, Non-Corrosive, Top-Tightening
Special Features	Eco Friendly
Included Components	(1) Toilet Seat & Hardware
UPC	073088133038

WARRANTY INFORMATION

The BEMIS 500EC 390 Round Toilet Seat comes with a manufacturer's warranty that covers purchases for 1 year in the US and Canada. Please retain your proof of purchase for any warranty claims.

CUSTOMER SUPPORT

For further assistance, questions, or to report any issues with your BEMIS 500EC 390 Round Toilet Seat, please visit the official Bemis website or contact their customer service department. You can find contact information on the product packaging or the Bemis brand store online.

Online resources may include FAQs, additional installation guides, and product care tips.