

Traxxas TRAC6784

Traxxas 17.4 cm Chrome LED Light Bar for RC Vehicles Instruction Manual

1. INTRODUCTION

This instruction manual provides essential information for the proper installation, operation, and maintenance of your Traxxas 17.4 cm Chrome LED Light Bar. This product is a genuine Traxxas replacement accessory designed to enhance visibility and appearance for compatible RC vehicles. Please read this manual thoroughly before proceeding with installation or use.

2. PACKAGE CONTENTS

Verify that all components are present before beginning installation:

- 1x Traxxas Chrome LED Light Bar assembly (with 4 clear LED lights)
- 1x Wiring harness with connector

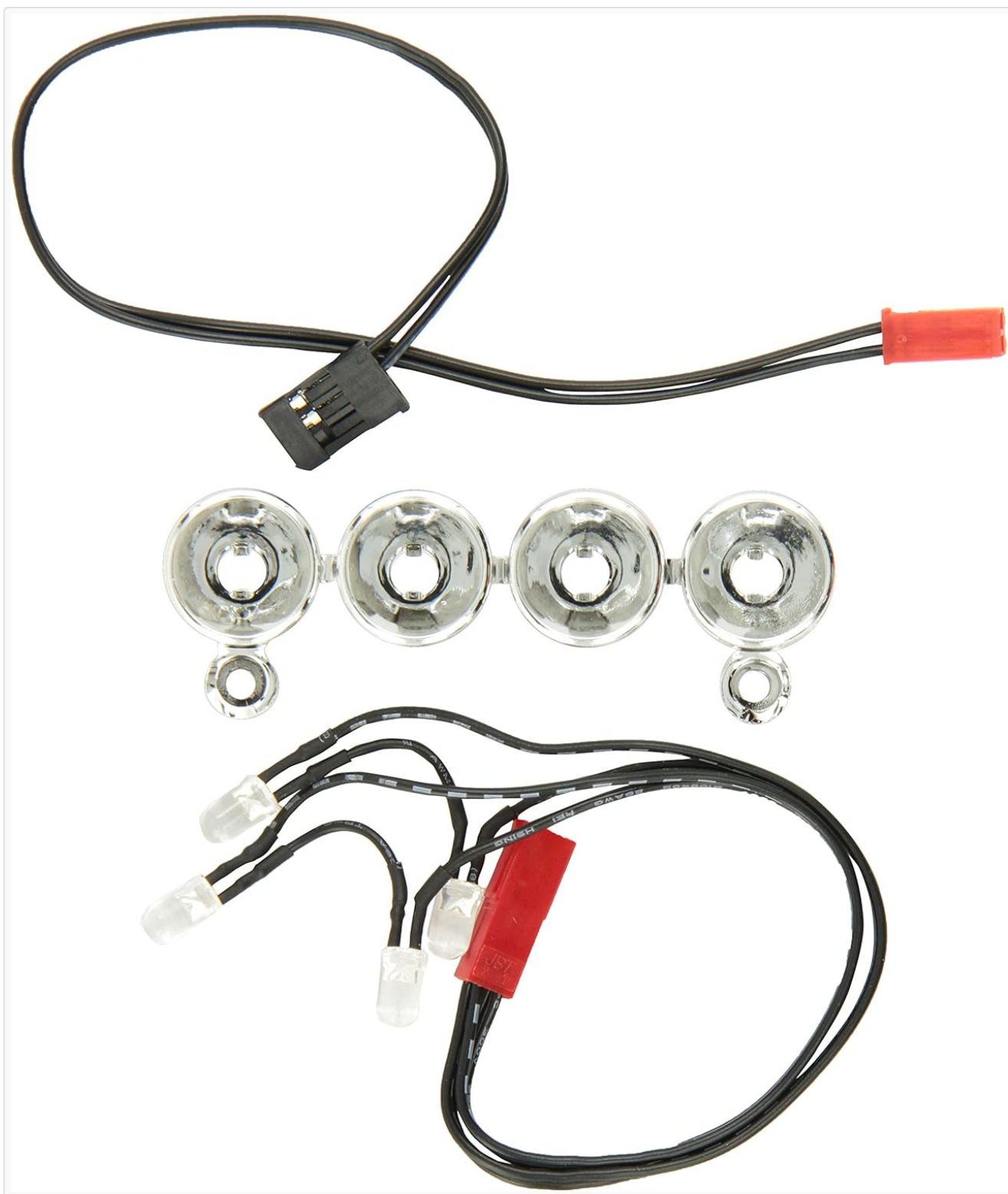


Image 2.1: Overview of the Traxxas Chrome LED Light Bar components, showing the light bar unit and its associated wiring.



Image 2.2: Close-up view of the Traxxas Chrome LED Light Bar, illustrating the chrome housing and the clear LED bulbs.

3. SETUP AND INSTALLATION

Proper installation ensures optimal performance and durability of your LED light bar. Always use genuine Traxxas parts for compatibility and consult your vehicle's user manual for specific mounting points or electrical connections.

1. **Preparation:** Ensure your RC vehicle's power is off and the battery is disconnected before beginning installation.
2. **Mounting the Light Bar:** Securely attach the chrome LED light bar to the desired location on your RC vehicle. This typically involves using existing mounting points or creating new ones if necessary. Ensure the light bar is firmly anchored to withstand vehicle operation.
3. **Wiring Connection:** Route the wiring harness from the light bar to an available power source on your RC vehicle, such as a receiver port or dedicated lighting power output. Ensure wires are routed safely, away from moving parts, and secured to prevent crimping or damage.
4. **Polarity Check:** Connect the wiring harness to the power source. If the lights do not illuminate, check the polarity of the connection. Some units may require reversing the wires within the connector plug if they were wired backwards from the factory. A voltmeter can be used to verify correct polarity.

5. **Testing:** Reconnect the vehicle's battery and power on the system to test the functionality of the LED light bar.

4. OPERATION

The Traxxas LED Light Bar is designed for straightforward operation. Once properly installed and connected to a power source, the lights will typically activate when the vehicle's power system is engaged. The bright LEDs provide enhanced visibility during low-light conditions and can assist with directional orientation when the vehicle is at a distance.

Note: This light bar does not typically include an independent on/off switch and is powered directly by the vehicle's electrical system. For independent control, an aftermarket switch or compatible telemetry system may be required (not included).

5. MAINTENANCE

To ensure the longevity and performance of your Traxxas LED Light Bar, follow these maintenance guidelines:

- **Cleaning:** Periodically clean the light bar and LED lenses with a soft, damp cloth to remove dirt, dust, and debris. Avoid abrasive cleaners or solvents that could damage the chrome finish or plastic components.
- **Inspection:** Regularly inspect the light bar for any signs of damage, such as cracks in the housing, loose wires, or corrosion on the connectors. Ensure all mounting hardware remains secure.
- **Wiring:** Check the wiring harness for fraying, cuts, or loose connections. Secure any loose wiring to prevent interference with moving parts.

6. TROUBLESHOOTING

If your Traxxas LED Light Bar is not functioning as expected, consider the following:

- **Lights Not Illuminating:**
 - Verify that the vehicle's power is on and the battery is charged.
 - Check all wiring connections to ensure they are secure and properly seated.
 - Inspect the wiring for any breaks or damage.
 - Confirm correct polarity. If the lights do not work, try reversing the wires in the connector plug. Some units have been known to be wired with reversed polarity from the factory.
- **Dim Lights:**
 - Ensure the vehicle's battery is fully charged. Low voltage can affect LED brightness.
 - Clean the LED lenses to remove any dirt or film that might be obstructing light output.
- **Intermittent Operation:**
 - Check for loose connections in the wiring harness or at the power source.
 - Inspect for any physical damage to the light bar or wiring that could cause intermittent contact.

7. SPECIFICATIONS

Brand	Traxxas
Model Number	TRAC6784

Product Dimensions (L x W x H)	8.38 x 0.76 x 454.66 cm; 25 grams
Color	Chrome
Shape	Rectangular
Material	Plastic
Finish Type	Chrome
Light Source Type	Light Emitting Diode (LED)
Power Source	Battery Powered
Number of Light Sources	4
Batteries Included	No
First Available Date	August 13, 2012




8. WARRANTY AND SUPPORT

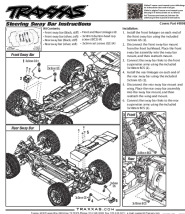
For information regarding product warranty, returns, or technical support, please refer to the official Traxxas website or contact Traxxas customer service directly. Keep your proof of purchase for any warranty claims.

Traxxas Official Website: <https://traxxas.com>

© 2023 Traxxas. All rights reserved. This manual is for informational purposes only.

Related Documents - TRAC6784

	<p>Traxxas TQi Radio System Owner's Manual</p> <p>This manual provides comprehensive instructions for the Traxxas TQi Radio System, including setup, operation, advanced tuning, and troubleshooting. It covers features like Traxxas Stability Management (TSM), Traxxas Link Wireless Module, and model memory management.</p>
	<p>Traxxas TQi Radio System Owner's Manual</p> <p>Comprehensive owner's manual for the Traxxas TQi Radio System, covering setup, operation, advanced tuning, and troubleshooting for models 6507R and 6509R.</p>
	<p>Traxxas TQi Radio System Owner's Manual</p> <p>Comprehensive owner's manual for the Traxxas TQi 2.4GHz Radio System, covering setup, operation, tuning, and troubleshooting for models 6507A and 6509A, including Traxxas Stability Management (TSM).</p>



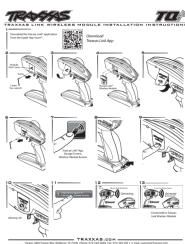
[Traxxas Steering Sway Bar Instructions & Installation Guide](#)

Detailed instructions and recommended settings for installing Traxxas steering sway bars on RC vehicles. Learn how to adjust for traction and handling.



[Instrukcja ładowarki Traxxas EZ-Peak PLUS do akumulatorów LiPo i NiMH](#)

Szczegółowa instrukcja obsługi szybkiej ładowarki Traxxas EZ-Peak PLUS do akumulatorów LiPo i NiMH. Opisuje proces ładowania, ustawienia, funkcje bezpieczeństwa oraz rozwiązywanie problemów.



[Traxxas Link Wireless Module Installation Instructions](#)

Step-by-step guide to installing and connecting the Traxxas Link Wireless Module to your Traxxas TQi transmitter for enhanced control and telemetry.