

## ORICO 8628SUS3-C

# ORICO 8628SUS3-C Hard Drive Docking Station User Manual

Model: 8628SUS3-C | Brand: ORICO

## 1. INTRODUCTION AND OVERVIEW

---

The ORICO 8628SUS3-C is a versatile, tool-free docking station designed for 2.5-inch and 3.5-inch SATA hard drives and SSDs. It provides high-speed connectivity to your computer via SuperSpeed USB 3.0 and eSATA interfaces, facilitating data backup, transfer, and drive management. Its top slot-loading design ensures easy installation and removal of drives. This docking station also supports standalone cloning, allowing you to duplicate drives without a host computer connection.



The ORICO 8628SUS3-C docking station, showcasing its dual slots accommodating both 2.5-inch and 3.5-inch SATA hard drives or SSDs.

## 2. WHAT'S IN THE BOX

---

Please verify that all items are present in the package:

- 1 x ORICO 2.5 & 3.5 inch Hard Drive Docking Station (Model: 8628SUS3-C)
- 1 x 12V4A Power Adapter
- 1 x 3.3Ft. USB 3.0 Cable
- 1 x eSATA Cable
- 1 x User Manual (this document)
- 1 x Service Card

## 3. SETUP INSTRUCTIONS

---

Follow these steps to set up your ORICO docking station:

1. **Connect the Power Adapter:** Plug the 12V4A power adapter into the DC port on the back of the docking station and

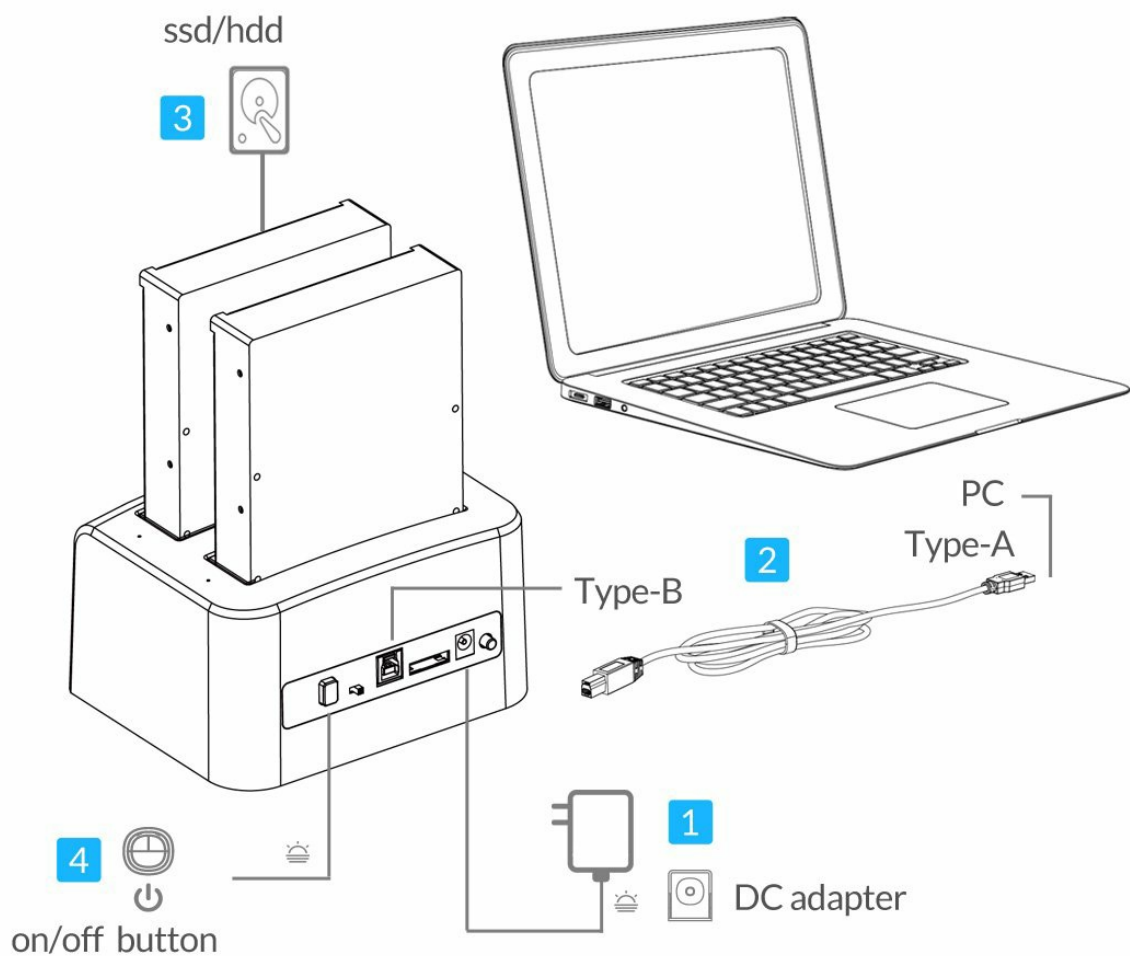
then into a power outlet.

2. **Connect to Computer:** Choose your preferred connection method:

- **USB 3.0:** Connect one end of the provided USB 3.0 cable to the USB 3.0 port on the docking station and the other end to an available USB 3.0 port on your computer.
- **eSATA:** Connect one end of the provided eSATA cable to the eSATA port on the docking station and the other end to an available eSATA port on your computer.

3. **Insert Hard Drives:** Gently slide your 2.5-inch or 3.5-inch SATA HDD/SSD into the designated slots on top of the docking station. Ensure the drive is fully seated. The docking station supports two drives simultaneously.

4. **Power On:** Press the power switch on the back of the docking station to turn it on. The LED indicators will illuminate.



An illustrative diagram detailing the connection process: 1) DC adapter, 2) USB cable to PC, 3) SSD/HDD insertion, and 4) power on/off button.

## 4. OPERATING INSTRUCTIONS

### 4.1. Data Transfer Mode

Once connected to your computer and powered on, the inserted drives will be recognized by your operating system. You can then access them like any other external storage device.

- **SuperSpeed USB 3.0:** Offers data transfer rates up to 5Gbps. It is backward compatible with USB 2.0 and 1.1.
- **eSATA:** Provides data transfer rates up to 3Gbps.
- **Plug and Play:** The device supports hot-swapping, allowing you to insert or remove drives while the docking station is powered on, without needing to restart your computer. No drivers are typically required for Windows, Linux, or Mac operating systems.



This image illustrates the ORICO docking station connected to a laptop via USB, with both 2.5-inch and 3.5-inch drives inserted, highlighting its broad compatibility.

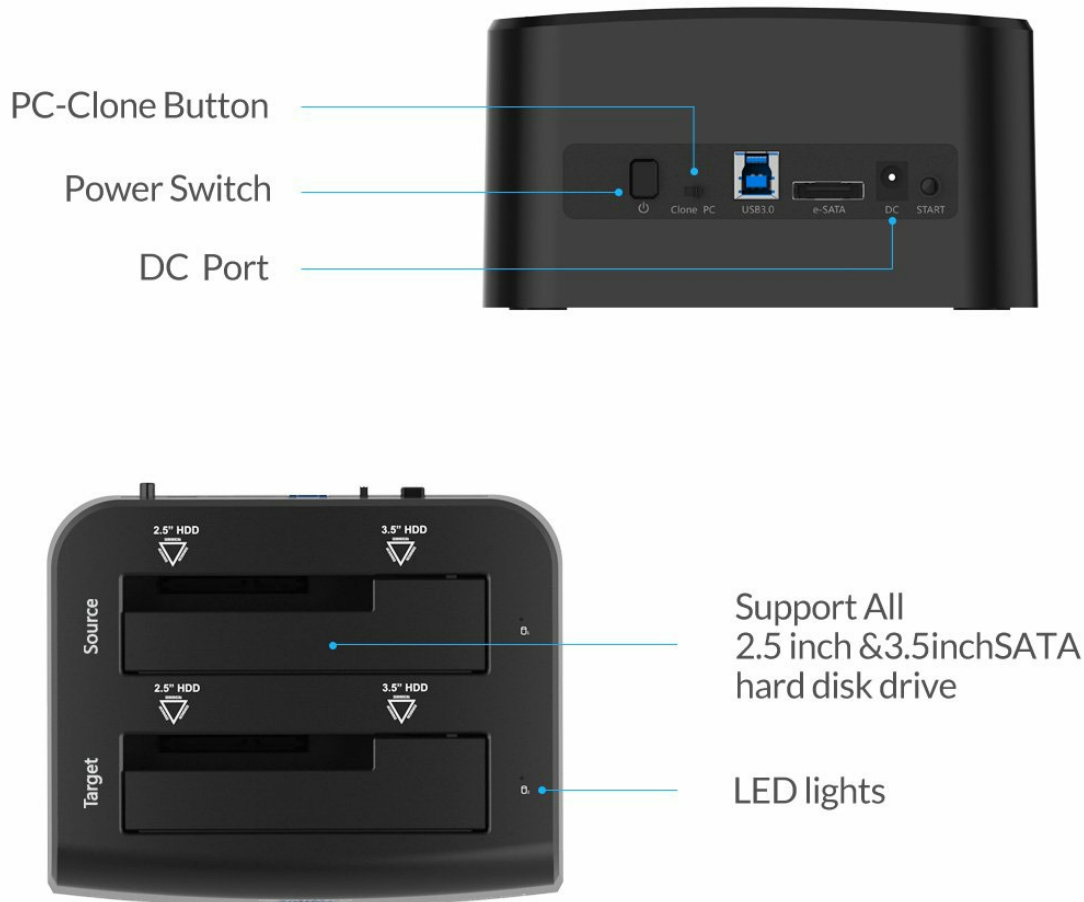
## 4.2. Standalone Clone Function (Offline Duplication)

The ORICO 8628SUS3-C supports standalone cloning, allowing you to duplicate a source drive to a target drive without connecting to a computer.

1. **Prepare Drives:** Ensure both the Source drive (the drive you want to copy FROM) and the Target drive (the drive you want to copy TO) are unformatted or contain data you are willing to overwrite. The Target drive must be equal to or larger in capacity than the Source drive.

2. **Insert Drives:** Insert the Source drive into the 'Source' slot and the Target drive into the 'Target' slot on the docking station.
3. **Disconnect from PC:** Ensure the docking station is disconnected from your computer (USB or eSATA cable).
4. **Power On:** Turn on the docking station using the power switch.
5. **Initiate Clone:** Press and hold the 'Clone' button (often labeled 'PC-Clone Button' or similar) on the back of the docking station for approximately 3-5 seconds until the cloning process begins. The progress indicator LEDs will light up, showing the cloning status (e.g., 25%, 50%, 75%, 100%).
6. **Completion:** The cloning process is complete when all progress indicator LEDs are solid. Power off the docking station and safely remove the drives.

**Important Note:** All data on the Target drive will be erased during the cloning process. Back up any important data on the Target drive before proceeding.



This image provides a close-up of the docking station's rear panel, showing the PC-Clone button, Power Switch, DC Port, USB 3.0, and eSATA interfaces. The top view highlights the Source and Target drive slots and LED lights.



The docking station is shown performing an offline clone operation, capable of cloning up to 8TB. Product dimensions are provided:  
W 217x D 142 x H 80 (mm) or W 8.54x D 5.59 x H 3.14 (in).

## 5. MAINTENANCE

---

To ensure the longevity and optimal performance of your ORICO docking station:

- Keep the device clean and free from dust. Use a soft, dry cloth for cleaning.
- Avoid exposing the docking station to extreme temperatures, humidity, or direct sunlight.
- Do not block the ventilation openings, if any, to prevent overheating.
- Handle hard drives carefully when inserting or removing them to prevent damage to the drive connectors or the docking station slots.
- Always power off the docking station before disconnecting the power adapter.

## 6. TROUBLESHOOTING

---

If you encounter issues with your ORICO docking station, refer to the following common problems and solutions:

Problem	Possible Cause / Solution
Drive not detected by computer	<ul style="list-style-type: none"> <li>◦ Ensure the docking station is powered on and connected securely to the computer via USB or eSATA.</li> <li>◦ Verify the hard drive is properly seated in the slot.</li> <li>◦ Check if the drive is initialized and partitioned in Disk Management (Windows) or Disk Utility (Mac).</li> <li>◦ Try a different USB/eSATA port or cable.</li> <li>◦ Test with a different hard drive to rule out drive issues.</li> </ul>
Slow data transfer speeds	<ul style="list-style-type: none"> <li>◦ Ensure you are connected to a USB 3.0 port on your computer for optimal speed. USB 2.0 ports will result in slower speeds.</li> <li>◦ Verify your computer's USB 3.0 drivers are up to date.</li> <li>◦ The performance of the hard drive itself can affect transfer speeds.</li> </ul>
Cloning process fails or does not start	<ul style="list-style-type: none"> <li>◦ Ensure the docking station is disconnected from the computer before initiating a clone.</li> <li>◦ Verify the Target drive's capacity is equal to or larger than the Source drive's capacity.</li> <li>◦ Ensure both drives are properly seated.</li> <li>◦ Press and hold the 'Clone' button for the required duration (3-5 seconds).</li> <li>◦ Check the health of both Source and Target drives.</li> </ul>
Docking station not powering on	<ul style="list-style-type: none"> <li>◦ Check if the power adapter is securely connected to both the docking station and a working power outlet.</li> <li>◦ Ensure the power switch is in the 'On' position.</li> <li>◦ Try a different power outlet.</li> </ul>

## 7. SPECIFICATIONS

Feature	Description
Model Number	ORICO 8628SUS3-C
Hardware Interface	USB 3.0, eSATA
Compatible Drives	2.5 inch / 3.5 inch SATA HDD & SSD
Supported Devices Quantity	2
Data Transfer Rate (USB 3.0)	Up to 5 Gigabits Per Second (Gbps)
Data Transfer Rate (eSATA)	Up to 3 Gigabits Per Second (Gbps)
Offline Clone Capacity	Up to 8TB
Operating System Compatibility	Windows XP/7/8/8.1, Linux, Mac 9.1 or later

Feature	Description
Power Adapter	12V4A
Dimensions (L x W x H)	217 x 142 x 80 mm (8.54 x 5.59 x 3.14 inches)
Item Weight	1.7 Pounds

## 8. WARRANTY AND SUPPORT

---

Your ORICO 8628SUS3-C Hard Drive Docking Station comes with a service card. For warranty information, technical support, or any inquiries regarding your product, please refer to the contact details provided on the service card or visit the official ORICO website. Please retain your proof of purchase for warranty claims.