

KNIPEX 97 49 94

KNIPEX Locator 97 49 94 Instruction Manual

For use with KNIPEX Crimping Pliers 97 49 04, 97 52 04, 97 52 34

1. INTRODUCTION

This manual provides essential information for the correct installation, operation, and maintenance of the KNIPEX Locator 97 49 94. The locator is an accessory designed to enhance the precision and efficiency of specific KNIPEX crimping pliers by ensuring accurate positioning of terminals or connectors during the crimping process.

The KNIPEX Locator 97 49 94 is compatible with the following KNIPEX crimping pliers models:

- KNIPEX 97 49 04
- KNIPEX 97 52 04
- KNIPEX 97 52 34

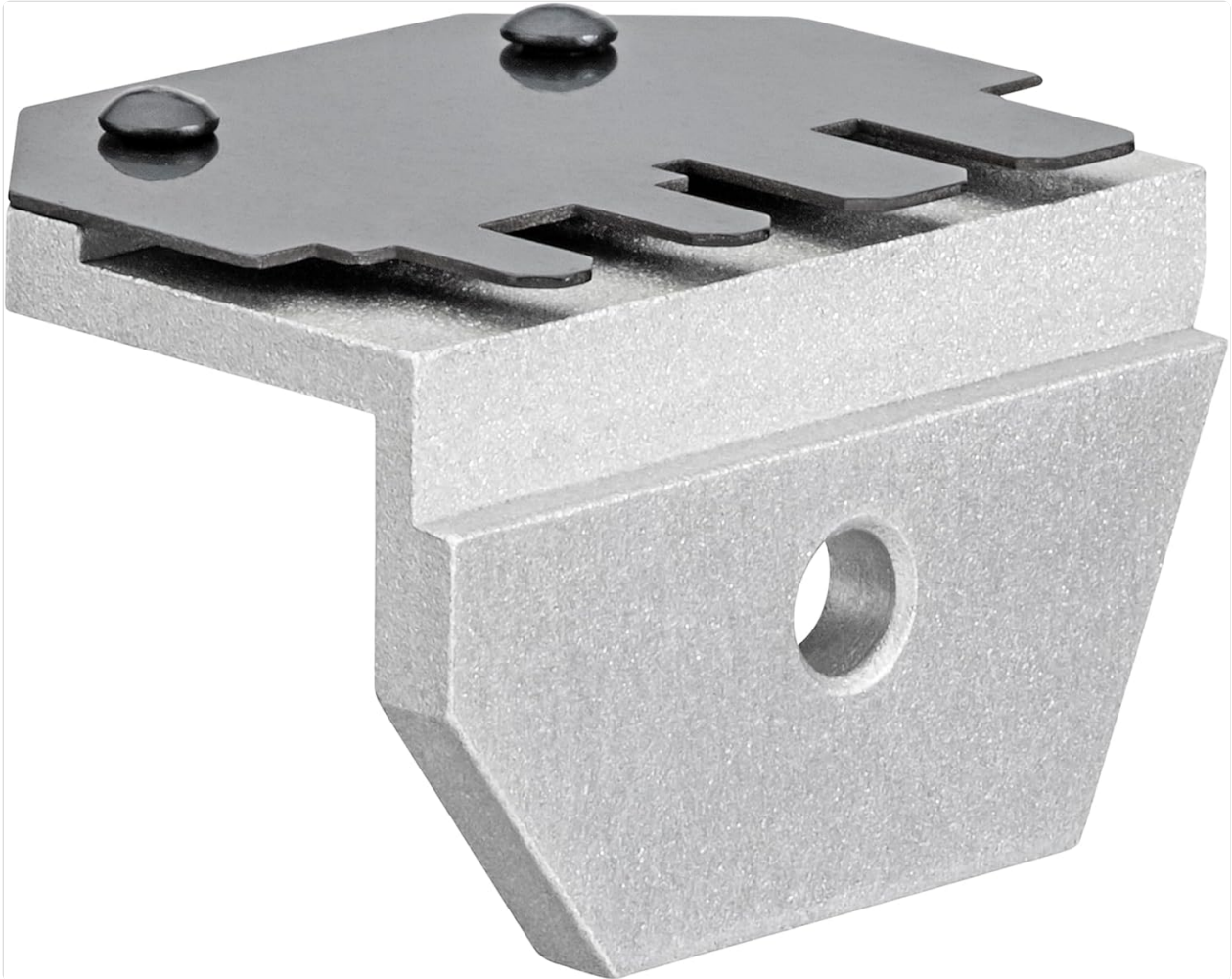
2. SAFETY INFORMATION

Always observe the following safety precautions to prevent injury and damage to the tool or workpiece.

- **Read Instructions:** Thoroughly read and understand this instruction manual before using the locator.
- **Compatible Tools:** Use the locator only with the specified KNIPEX crimping pliers models (97 49 04, 97 52 04, 97 52 34). Using it with incompatible tools may result in improper function or damage.
- **Personal Protective Equipment (PPE):** Always wear appropriate safety glasses to protect against flying debris during crimping operations.
- **Inspection:** Before each use, inspect the locator and the crimping pliers for any signs of damage, wear, or deformation. Do not use damaged equipment.
- **Secure Attachment:** Ensure the locator is securely attached to the crimping pliers before commencing work.
- **Children:** Keep tools and accessories out of reach of children.

3. PRODUCT OVERVIEW

The KNIPEX Locator 97 49 94 is a precision accessory designed to guide and hold terminals or connectors in the correct position for optimal crimping results.



An image showing the KNIPEX Locator 97 49 94. This silver-colored metal accessory features a black top plate with several finger-like protrusions, which are designed for precise positioning of terminals. A circular mounting hole is visible on its side, indicating how it attaches to compatible crimping pliers.

Components:

- **Main Body:** The primary structural component, typically made of metal alloy.
- **Positioning Plate:** A black plate with specific cutouts or fingers that align with the terminal or connector.
- **Mounting Hole:** A hole designed for secure attachment to the crimping pliers.

4. SETUP

Follow these steps to properly attach the locator to your compatible KNIPEX crimping pliers:

1. **Identify Mounting Point:** Locate the designated mounting point on your KNIPEX crimping pliers (models 97 49 04, 97 52 04, or 97 52 34). This is typically a screw hole or a slot designed for accessories.
2. **Align Locator:** Position the KNIPEX Locator 97 49 94 so that its mounting hole aligns with the mounting point on the pliers.
3. **Secure Attachment:** Use the appropriate screw or fastening mechanism provided with your crimping pliers (or the locator, if included) to firmly attach the locator. Ensure it is tightened sufficiently to prevent movement during operation, but do not overtighten.
4. **Verify Stability:** Gently test the locator's stability by attempting to move it. It should be securely fixed to the pliers without any play.

5. OPERATING INSTRUCTIONS

Once the locator is securely attached, follow these steps for precise crimping:

1. **Open Pliers:** Fully open the handles of your crimping pliers.
2. **Insert Terminal/Connector:** Carefully insert the terminal or connector into the designated cavity of the crimping die, ensuring it rests against the locator's positioning plate. The locator will help guide the terminal into the correct position.
3. **Position Wire:** Insert the stripped end of the wire into the terminal. Ensure the wire insulation is correctly positioned relative to the terminal's crimp zones.
4. **Perform Crimp:** Slowly close the handles of the crimping pliers until the crimp cycle is complete and the pliers release. The locator ensures the terminal remains in the optimal position throughout this process.
5. **Inspect Crimp:** After crimping, remove the wire and terminal. Visually inspect the crimp for proper formation, ensuring the wire is securely held and the insulation crimp (if applicable) is correctly formed.

6. MAINTENANCE

Proper maintenance ensures the longevity and continued accuracy of your KNIPEX Locator 97 49 94.

- **Cleaning:** After each use, wipe the locator clean with a dry, lint-free cloth to remove any dust, debris, or residue from terminals. Avoid using harsh chemicals or abrasive cleaners.
- **Storage:** Store the locator in a clean, dry environment, preferably with the crimping pliers it is used with, to prevent corrosion or damage.
- **Inspection:** Periodically inspect the positioning plate and mounting points for signs of wear, bending, or damage. If any damage is observed, replace the locator to maintain crimping accuracy.

7. TROUBLESHOOTING

If you encounter issues while using the KNIPEX Locator 97 49 94, consider the following:

- **Locator Not Attaching Securely:**
 - Ensure you are using the correct fastening mechanism.
 - Verify that the locator is aligned correctly with the pliers' mounting point.
 - Check for any obstructions preventing a flush fit.
- **Inconsistent Terminal Positioning:**
 - Confirm the locator is securely attached and not loose.
 - Inspect the locator's positioning plate for wear or damage that might affect alignment.
 - Ensure the terminal itself is not deformed or incompatible with the locator's design.

8. SPECIFICATIONS

Attribute	Value
Model Number	97 49 94
Item Weight	0.96 ounces

Product Dimensions	3.38 x 2 x 0.88 inches
Material	Blend
Included Components	Locator For 97 49 04, 97 52 04, 97 52 34
Manufacturer	Knipex Tools LP

9. WARRANTY INFORMATION

For detailed warranty information regarding the KNIPEX Locator 97 49 94, please refer to the official KNIPEX website or the warranty documentation included with your original purchase of the crimping pliers or the locator itself. Warranty terms and conditions may vary.

10. SUPPORT

If you require further assistance, technical support, or have questions not covered in this manual, please contact KNIPEX customer service through their official channels:

- **Website:** Visit the official KNIPEX website for contact information, FAQs, and additional product resources.
- **Authorized Dealers:** Contact your local authorized KNIPEX dealer for support.