

Manuals+

[Q & A](#) | [Deep Search](#) | [Upload](#)

manuals.plus /

- › [Amazon Essentials](#) /
- › [Amazon Essentials Sterling Silver "I Love You To The Moon and Back" Pendant Necklace, 18" User Manual](#)

Amazon Essentials 440811

Amazon Essentials Sterling Silver "I Love You To The Moon and Back" Pendant Necklace User Manual

Model: 440811

INTRODUCTION

This manual provides instructions for the Amazon Essentials Sterling Silver "I Love You To The Moon and Back" Pendant Necklace, Model 440811. This necklace features a two-piece moon pendant engraved with a loving message, designed for daily wear and special occasions. Please read these instructions carefully to ensure proper handling and maintenance of your jewelry.

PRODUCT FEATURES

- **Material:** Crafted from .925 sterling silver.
- **Pendant Design:** Two-piece pendant featuring a circular disc and a crescent moon shape.
- **Engraving:** "I love you..." on the circular disc and "to the moon & back" on the crescent moon.
- **Chain Type:** Box chain.
- **Clasp Type:** Spring-ring clasp for secure fastening.
- **Chain Length:** 18 inches.

SETUP AND INITIAL INSPECTION

The Amazon Essentials Sterling Silver Pendant Necklace comes pre-assembled. Upon receiving your necklace, perform the following steps:

1. **Unpackaging:** Carefully remove the necklace from its packaging.
2. **Visual Inspection:** Examine the chain and pendant for any signs of damage, kinks, or tangles that may have occurred during shipping.
3. **Clasp Check:** Test the spring-ring clasp to ensure it opens and closes smoothly and securely.
4. **Pendant Alignment:** Verify that the two pendant pieces are correctly attached to the chain and move freely.





Figure 1: The Amazon Essentials Sterling Silver Pendant Necklace with the circular disc and crescent moon pendant. The engraving "I love you..." is on the disc, and "to the moon & back" is on the moon.

WEARING INSTRUCTIONS

To wear your necklace:

1. Hold one end of the chain and gently press the lever on the spring-ring clasp to open it.
2. Place the necklace around your neck.
3. Insert the open clasp into the small ring at the other end of the chain until it closes securely.
4. Adjust the necklace to ensure the pendant sits comfortably and is visible.

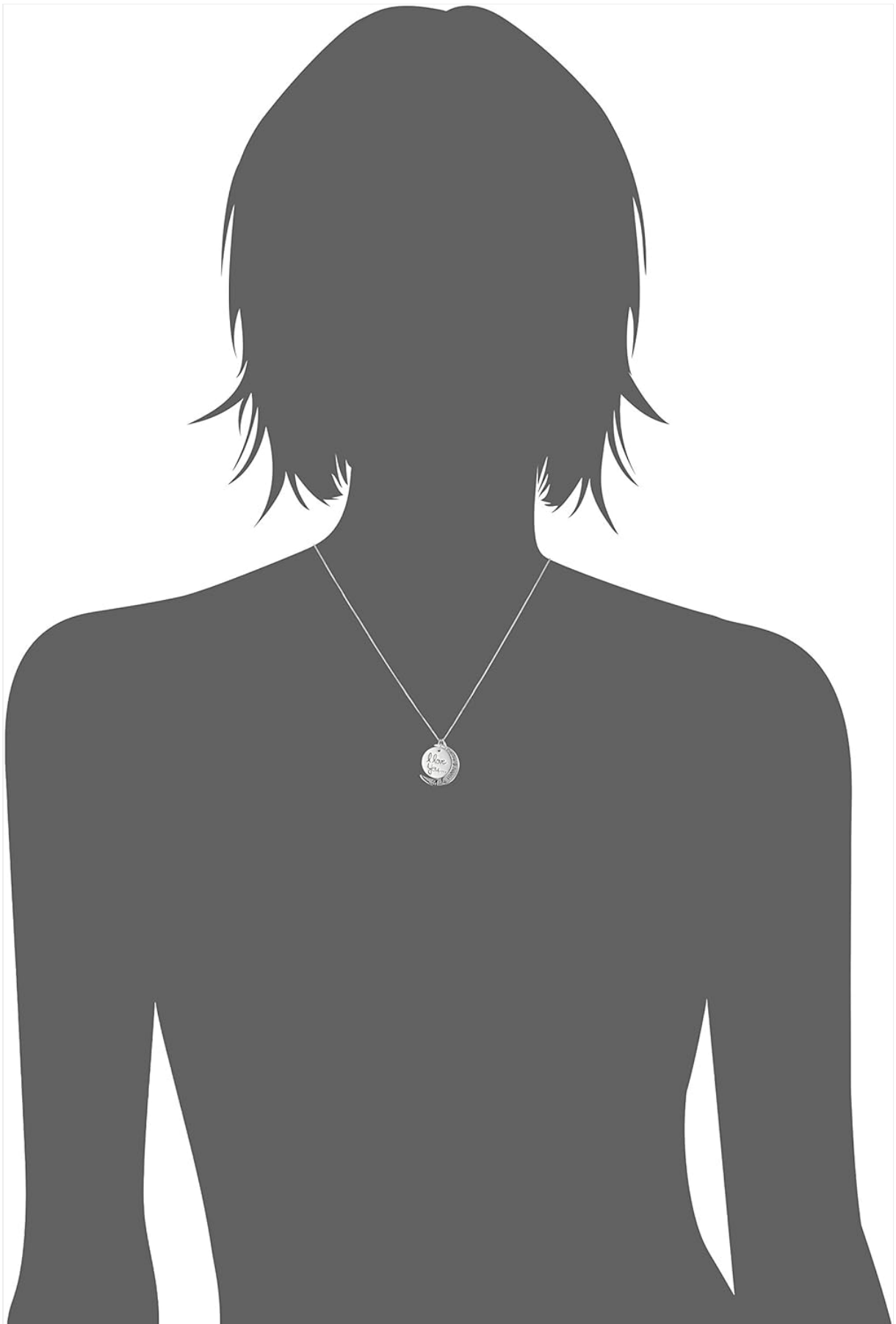


Figure 2: The necklace as worn, demonstrating its approximate length and how the pendant rests.

Pendant Movement

The two pendant pieces are designed to move independently, allowing for a dynamic display of the engraved message. They can overlap or separate slightly depending on movement.



Figure 3: The two-piece pendant with the circular disc and crescent moon separated, showcasing the full engraving.

MAINTENANCE AND CARE

Proper care will help maintain the luster and longevity of your sterling silver necklace.

- **Cleaning:** Clean your sterling silver jewelry regularly with a soft polishing cloth. For deeper cleaning, use a mild soap and water solution, then rinse thoroughly and dry immediately with a soft, lint-free cloth. Avoid abrasive cleaners.
- **Avoid Chemicals:** Keep the necklace away from harsh chemicals, perfumes, lotions, and hairsprays, as these can cause tarnishing or damage.
- **Storage:** Store your necklace in an airtight bag or jewelry box to prevent oxidation and scratches. Avoid storing it in humid environments.
- **Wearing Habits:** Remove your necklace before showering, swimming, exercising, or performing household

chores.

TROUBLESHOOTING

Issue	Possible Cause	Solution
Tarnishing	Exposure to air, moisture, chemicals, or skin oils.	Clean with a silver polishing cloth or a mild silver cleaner. Store in an airtight bag.
Chain Kinks/Tangling	Improper storage or rough handling.	Gently untangle using a needle or tweezers. Store flat or hanging to prevent tangles.
Clasp Not Closing	Debris in the mechanism or slight deformation.	Inspect for debris and gently remove. If deformed, seek professional jewelry repair.

SPECIFICATIONS

Brand	Amazon Essentials
Model Number	440811
Material	.925 Sterling Silver
Chain Type	Box Chain
Clasp Type	Spring Ring
Chain Length	18 inches
Product Dimensions	5 x 5 x 0.7 inches; 0.32 ounces (approximate)
Date First Available	October 12, 2011

NECKLACE SIZE GUIDE

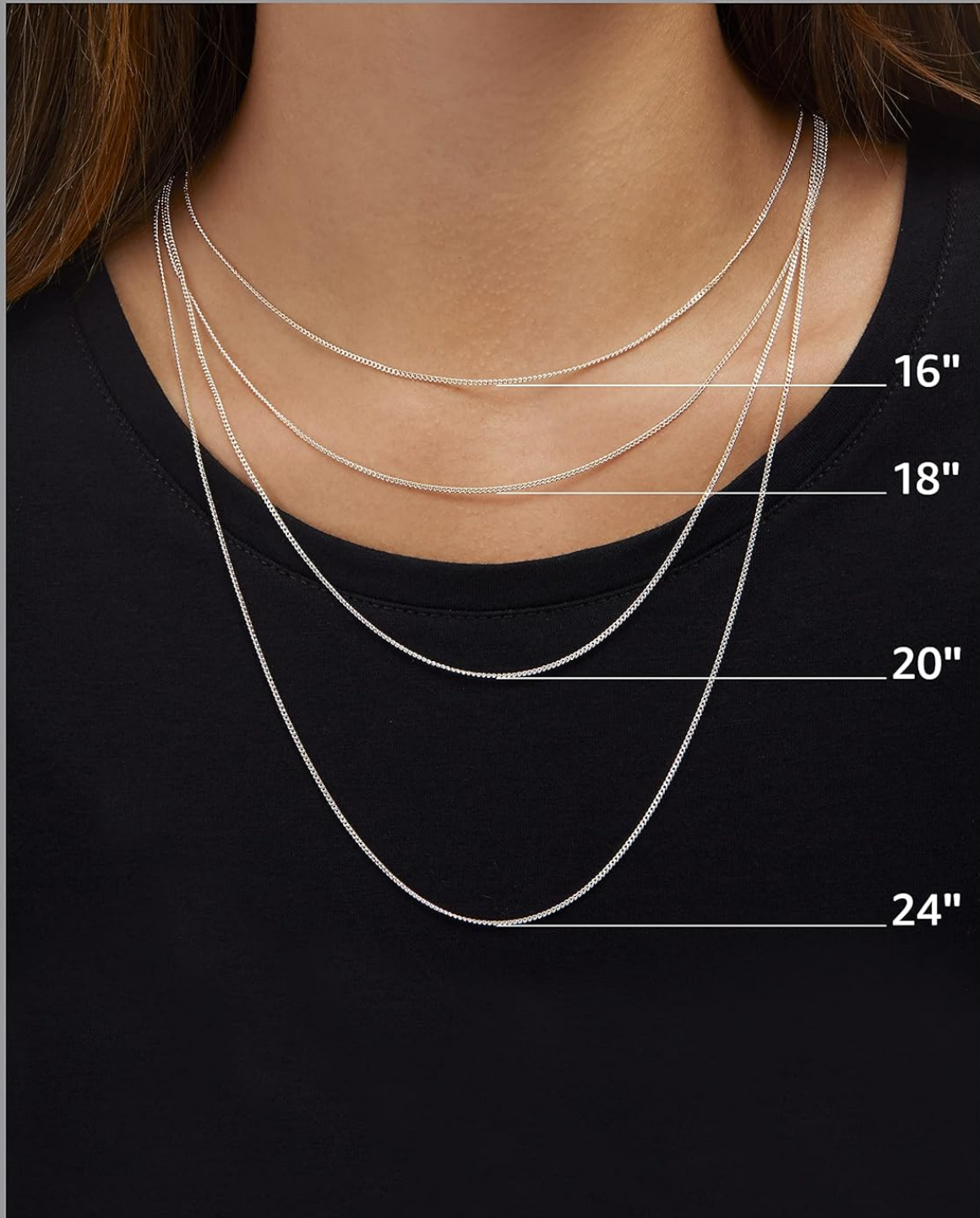


Figure 4: Necklace Size Guide illustrating various chain lengths for reference. This specific model is 18 inches.

PRODUCT OVERVIEW VIDEO

Your browser does not support the video tag.

Video 1: An official product video providing a visual overview of the Amazon Essentials Sterling Silver "I Love You To The Moon and Back" Pendant Necklace. This video demonstrates the necklace's design and features.

WARRANTY AND SUPPORT

For information regarding warranty coverage or customer support for your Amazon Essentials product, please

refer to the Amazon customer service portal or contact Amazon Essentials directly through their official channels.
Keep your purchase receipt as proof of purchase.

© 2023 Amazon Essentials. All rights reserved.