

Rosewill RASA-11001

Rosewill RSV 4 x 3.5-Inch HDD Cage

Model: RASA-11001

Brand: Rosewill

INTRODUCTION

This user manual provides detailed instructions for the installation, operation, and maintenance of the Rosewill RSV 4 x 3.5-Inch HDD Cage (Model RASA-11001). This product is designed to expand storage capacity within compatible computer cases, specifically as an add-on module for Rosewill RSV-R4000 and RSV-L4000 chassis. Please read this manual thoroughly before installation and use to ensure proper functionality and safety.

SAFETY INFORMATION

- Always disconnect power from your computer system before installing or removing any components.
- Handle all components with care to prevent damage.
- Ensure proper grounding to avoid electrostatic discharge (ESD) which can damage sensitive electronic components.
- Do not expose the HDD cage to moisture or extreme temperatures.
- This product is intended for use with 3.5-inch HDDs. Ensure compatibility with your hard drives.
- Verify correct power connector orientation to prevent damage to the unit or connected drives. Incorrect connection can lead to component failure or fire.

PACKAGE CONTENTS

Please verify that all items are present in the package:

- Rosewill RSV 4 x 3.5-Inch HDD Cage (RASA-11001)
- User Manual
- Mounting Screws (quantity may vary)



Image showing the Rosewill RSV 4 x 3.5-Inch HDD Cage, its user manual, and the product packaging.

PRODUCT OVERVIEW

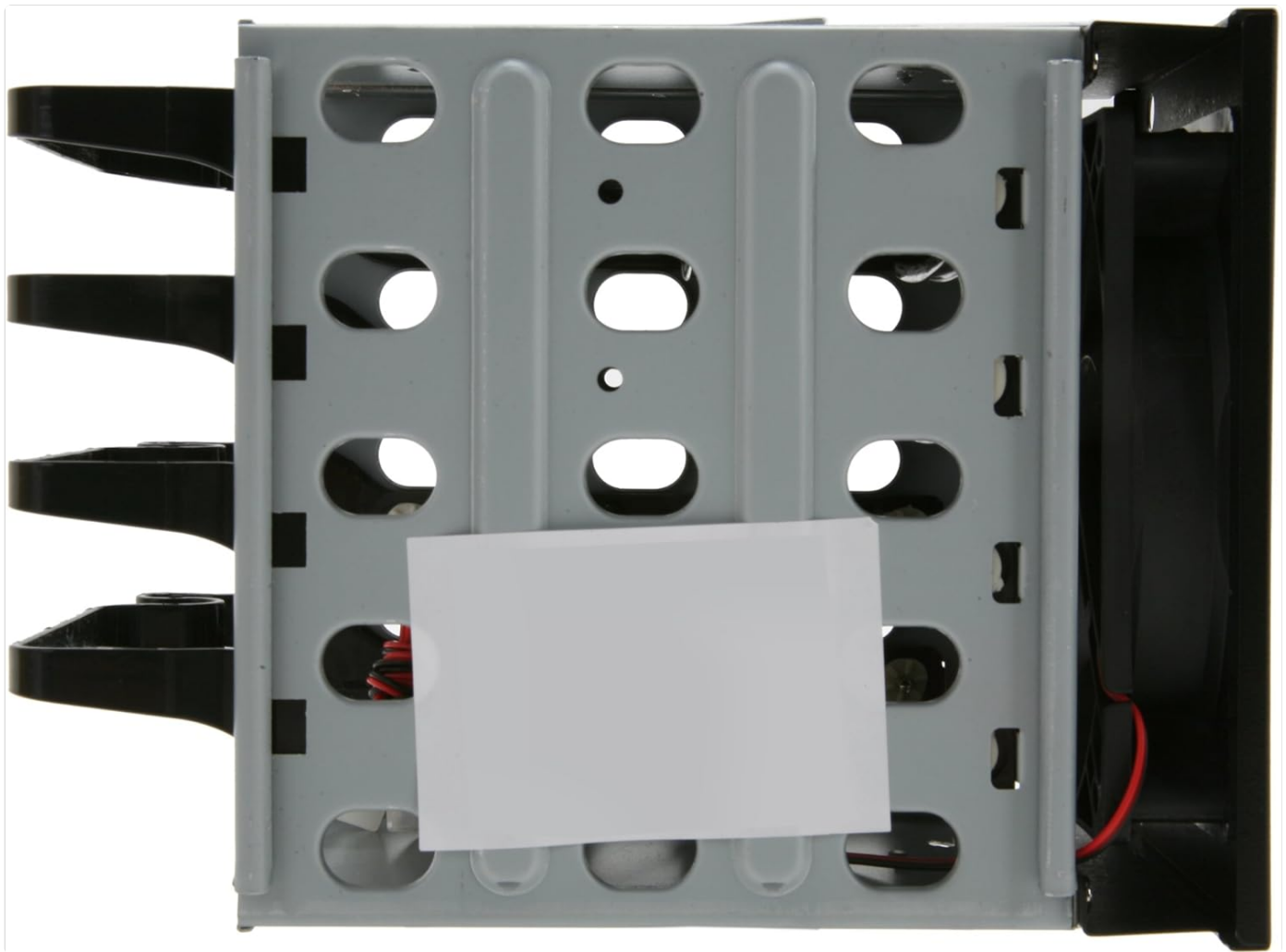
The Rosewill RASA-11001 HDD Cage is designed to house up to four 3.5-inch hard disk drives. It features a 120mm cooling fan to maintain optimal operating temperatures for the installed drives.



Front view of the Rosewill HDD Cage, highlighting the integrated 120mm fan for cooling.



Detailed view of the 120mm cooling fan with its protective grille.



Side view illustrating the four individual drive bays designed for 3.5-inch hard drives.

SETUP AND INSTALLATION

1. **Prepare Your System:** Power off your computer and disconnect the power cord from the wall outlet. Open your computer case to access the internal drive bays.
2. **Identify Compatible Bays:** This HDD cage is designed to fit into three standard 5.25-inch drive bays. Ensure your case has three consecutive, unoccupied 5.25-inch bays.
3. **Install the HDD Cage:** Carefully slide the Rosewill HDD cage into the selected 5.25-inch bays from the front of your computer case. Align the screw holes on the cage with those on your case.
4. **Secure the Cage:** Use the provided mounting screws to secure the HDD cage to your computer case. Typically, two to four screws on each side are sufficient.
5. **Install Hard Drives:**
 - Gently slide each 3.5-inch HDD into an available drive tray within the cage. Ensure the SATA data and power connectors on the HDD align with the backplane connectors of the cage.
 - Push firmly until the drive is fully seated and secured.
6. **Connect Power and Data Cables:**
 - Connect the appropriate SATA data cables from the HDD cage's backplane to your motherboard's SATA ports.
 - Connect the power cables (typically Molex or SATA power connectors) from your power supply to the corresponding power inputs on the HDD cage. Ensure correct polarity and secure connections.
 - Connect the 120mm fan's power connector to an available fan header on your motherboard or power supply.
7. **Cable Management:** Organize cables neatly to ensure proper airflow within the case.

8. **Close Case and Power On:** Close your computer case, reconnect the power cord, and power on your system. Your operating system should detect the newly installed hard drives.

OPERATION

Once installed, the Rosewill HDD Cage operates passively, providing a secure housing and cooling for your hard drives. The integrated 120mm fan will activate with system power to ensure consistent airflow over the drives.

- **Drive Access:** Access to the installed hard drives is managed through your computer's operating system, similar to any other internal storage device.
- **Hot-Swap Capability:** While the cage supports hot-swap functionality for SATA drives, always ensure your motherboard and operating system are configured for hot-swapping and that drives are safely ejected or unmounted before removal to prevent data loss.
- **LED Indicators:** The cage may feature LED indicators for power and drive activity. Refer to your system's documentation or the cage's specific design for LED behavior.

MAINTENANCE

- **Dust Removal:** Periodically inspect the 120mm fan and the cage for dust accumulation. Use compressed air or a soft brush to gently remove dust from the fan blades and grilles to maintain optimal airflow.
- **Cable Inspection:** Occasionally check all connected power and data cables to ensure they are securely seated and not damaged.
- **Environmental Conditions:** Ensure the computer case is kept in a well-ventilated area, away from direct sunlight, heat sources, and excessive humidity.

TROUBLESHOOTING

Problem	Possible Cause	Solution
Hard drives not detected.	<ul style="list-style-type: none">◦ Loose data or power cables.◦ Incorrectly seated hard drives.◦ Motherboard SATA port issues.◦ Power supply insufficient.	<ul style="list-style-type: none">◦ Check all SATA data and power connections to the cage and drives.◦ Ensure each hard drive is fully inserted into its bay.◦ Try connecting drives to different SATA ports on the motherboard.◦ Verify your power supply has adequate wattage for all components.
Fan not spinning.	<ul style="list-style-type: none">◦ Fan power cable disconnected.◦ Faulty fan.	<ul style="list-style-type: none">◦ Ensure the 120mm fan's power cable is securely connected to a fan header or power supply.◦ If the fan remains unresponsive, it may need replacement.
Drives are running hot.	<ul style="list-style-type: none">◦ Insufficient airflow in the case.◦ Dust accumulation on the fan or cage.	<ul style="list-style-type: none">◦ Ensure proper case ventilation and fan configuration.◦ Clean the fan and cage regularly to prevent dust buildup.

SPECIFICATIONS

Model Number	RASA-11001
HDD Tray Capacity	4 x 3.5-inch HDDs
Cooling Fan	1 x 120mm
Dimensions (L x W x H)	8.27" x 5.12" x 5.9" (21 x 13 x 15 cm)
Item Weight	1 pound (approximately 16 ounces)
Compatibility	Designed as an add-on module for Rosewill RSV-R4000 and RSV-L4000 chassis. Requires three 5.25-inch drive bays.

WARRANTY INFORMATION


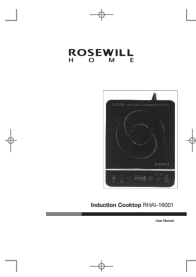
Rosewill products typically come with a limited warranty. For specific warranty terms and conditions applicable to your RASA-11001 HDD Cage, please refer to the warranty card included with your product or visit the official Rosewill website. Keep your purchase receipt as proof of purchase for warranty claims.


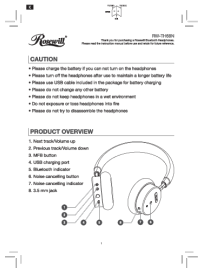
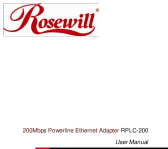
CUSTOMER SUPPORT

For technical assistance, troubleshooting, or warranty inquiries, please contact Rosewill customer support:

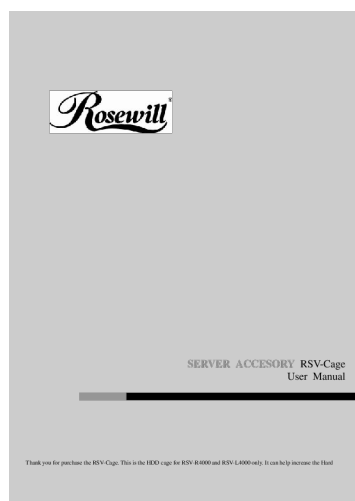
- **Website:** Visit the official Rosewill website for support resources, FAQs, and contact information.
- **Online Store:** [Rosewill Amazon Store](#)

Related Documents - RASA-11001

	<p>Rosewill RX-DU101 HDD Docking Station User Manual</p> <p>User manual for the Rosewill RX-DU101 HDD Docking Station, detailing hardware installation, specifications, features, and package contents.</p>
	<p>Rosewill RHAI-16001 Induction Cooktop User Manual</p> <p>User manual for the Rosewill RHAI-16001 Induction Cooktop, covering safety precautions, operating instructions, cookware selection, maintenance, troubleshooting, and product specifications.</p>

	<p>Rosewill RW-T52 True Wireless Stereo Bluetooth Earphones User Manual</p> <p>User manual for Rosewill RW-T52 True Wireless Stereo Bluetooth Earphones, covering package contents, specifications, charging, pairing, operation, troubleshooting, and storage/maintenance.</p>
<p>Preview</p>	<p>Rosewill AUDIOWAVE H9000 Active Noise Cancelling Wireless Stereo Headphones Quick Installation Guide</p> <p>Quick installation guide for the Rosewill AUDIOWAVE H9000 Active Noise Cancelling Wireless Stereo Headphones, covering product functions, operation, specifications, package contents, and usage instructions.</p>
	<p>Rosewill RW-TH68N Bluetooth Headphones User Manual</p> <p>User manual for the Rosewill RW-TH68N Bluetooth Headphones, covering product overview, instructions for battery charging, noise cancellation, Bluetooth pairing, making calls, playing music, and technical specifications.</p>
	<p>Rosewill RPLC-200 200Mbps Powerline Ethernet Adapter User Manual</p> <p>User manual for the Rosewill RPLC-200 200Mbps Powerline Ethernet Adapter. Learn about installation, features, specifications, and troubleshooting for creating a high-speed network using your home's electrical wiring.</p>

Documents - Rosewill – RASA-11001



[\[pdf\]](#) User Manual Installation Guide Guide

IEEE1394 Agere Craig Chan Rosewill RSV 4 x 3 5 Inch HDD Cage RASA 11001 User Manual

B0DY2FL2J7 B00DGZ42SM B005FH0XOE 81nNgf xkZL m media amazon images I |||

SERVER ACCESSORY RSV-Cage User Manual Thank you for purchase the RSV-Cage. This is the HDD cage for RSV-R4000 and RSV-L4000 only. It can help increase the Hard SERVER ACCESSORY RSV-Cage User Manual Drive capacity of both RSV-R4000 and RSV-L4000 from 8 to 12 hard drives. Installation Guide Top Cove...

lang:en score:30 filesize: 337.84 K page_count: 6 document date: 2019-12-13



SERVER ACCESSORY RSV-Cage
User Manual

Thank you for your purchase of the RSV-Cage. This is the HDD cage for RSV-R4000 and RSV-L4000 only. It can help increase the Hard

[\[pdf\]](#) User Manual Installation Guide Guide

Microsoft Word APPROVAL SHEET FOR RASA 11001 user View User Manual DetailsRosewill RSV
Cage for 4 x 3 5 HDDs Add On Module Only Rosewill R4000 and L4000 NeweggUser 1741922204309c1
neweggimages IMAttachment UserManual 1741922204309 |||

SERVER ACCESSORY RSV-Cage User Manual Thank you for purchase the RSV-
Cage. This is the HDD cage for RSV-R4000 and RSV-L4000 only. It can help
increase the Hard SERVER ACCESSORY RSV-Cage User Manual Drive capacity of
both RSV-R4000 and RSV-L4000 from 8 to 12 hard drives. Installation Guide Top
Cove...

lang:en score:29 filesize: 327.77 K page_count: 6 document date: 2024-04-12