

[Manuals.plus](#) /

> [Coca-Cola](#) /

> Coca-Cola 2 Liter Bottle Instruction Manual

Coca-Cola 2 Liter Bottle

Coca-Cola 2 Liter Bottle Instruction Manual

1. PRODUCT OVERVIEW

This manual provides instructions for the proper handling, storage, and consumption of the Coca-Cola 2 Liter Bottle. Coca-Cola is a classic carbonated soft drink with a distinct cola flavor.

Key Features:

- Classic soft drink flavor.
- Contains 67.6 Fluid Ounces (2 Liters) of Coca-Cola.
- Packaged in a durable plastic bottle.
- Contains caffeine.
- Suitable for adult consumption.





Image 1.1: Front view of a Coca-Cola 2 Liter Bottle, featuring a "Share a Coke Alumni" label. This illustrates the product's packaging and branding.

2. SETUP AND PREPARATION

The Coca-Cola 2 Liter Bottle is ready for consumption after opening. No complex setup is required.

2.1 Opening the Bottle

1. Ensure the bottle is placed on a stable, flat surface.
2. Grip the cap firmly with one hand.

3. Twist the cap counter-clockwise until the seal breaks and the cap can be removed. A slight hiss of escaping carbonation is normal.
4. Dispose of the cap responsibly or re-secure it to maintain carbonation.

Caution: Opening a shaken bottle may result in rapid carbonation release and spillage. Open carefully.

3. OPERATING INSTRUCTIONS (CONSUMPTION)

For optimal enjoyment, serve Coca-Cola chilled.

3.1 Serving Suggestions

- Pour into a glass with ice for a refreshing experience.
- Consume directly from the bottle if preferred.
- Can be used as a mixer in various beverages.

3.2 Recommended Consumption

This product is intended for adult consumption. Due to its caffeine content, limit consumption for children and individuals sensitive to caffeine.

4. MAINTENANCE AND STORAGE

Proper storage ensures the quality and freshness of your Coca-Cola.

4.1 Storage Guidelines

- Store in a cool, dry place away from direct sunlight.
- Refrigerate after opening to maintain carbonation and flavor.
- Ensure the cap is tightly sealed when not in use.

4.2 Product Shelf Life

Once opened, the product has a recommended shelf life of approximately 7 days when refrigerated and properly sealed. Refer to the "Best By" date printed on the bottle for unopened product expiration.

5. TROUBLESHOOTING

Common issues and their resolutions.

5.1 Flat Soda

If your Coca-Cola tastes flat, it may be due to:

- **Improper Sealing:** Ensure the cap is tightly closed after each use.
- **Extended Storage:** Carbonation naturally dissipates over time, especially after opening. Consume within 7 days of opening for best quality.
- **Warm Temperature:** Carbonation is better retained in cold beverages. Keep refrigerated.

5.2 Difficulty Opening Cap

If the cap is difficult to open:

- Ensure your hands are dry for a better grip.
- Use a bottle opener designed for screw caps if available, applying gentle pressure.

- Avoid excessive force to prevent injury or damage to the bottle.

6. SPECIFICATIONS

Detailed product specifications for the Coca-Cola 2 Liter Bottle.

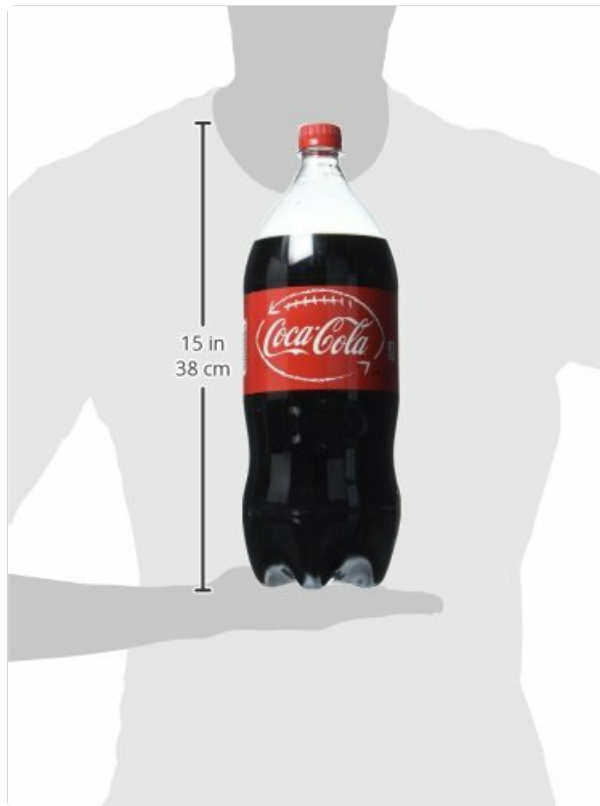


Image 6.1: A Coca-Cola 2 Liter Bottle shown with a ruler indicating its height of approximately 15 inches (38 cm). This provides a visual reference for the product's physical dimensions.

| Specification | Value |
|--|--------------------------------------|
| Brand Name | Coca-Cola |
| Item Volume | 2 Liters (67.60 Fluid Ounces) |
| Item Weight | 4.75 Pounds |
| Package Dimensions | 12.5 x 4.5 x 4.3 inches |
| Container Type | Bottle |
| Flavor | COCA COLA (Classic Coca Cola flavor) |
| Specialty | Caffeinated |
| Age Range Description | Adult |
| Product Shelf Life (Opened) | 7 Days (refrigerated) |
| GTIN (Global Trade Item Number) | 011289331518, 049000050103 |
| ASIN (Amazon Standard Identification Number) | B005F272TU |

7. INGREDIENTS AND NUTRITIONAL INFORMATION

Understanding the components of your Coca-Cola.

7.1 Ingredients List

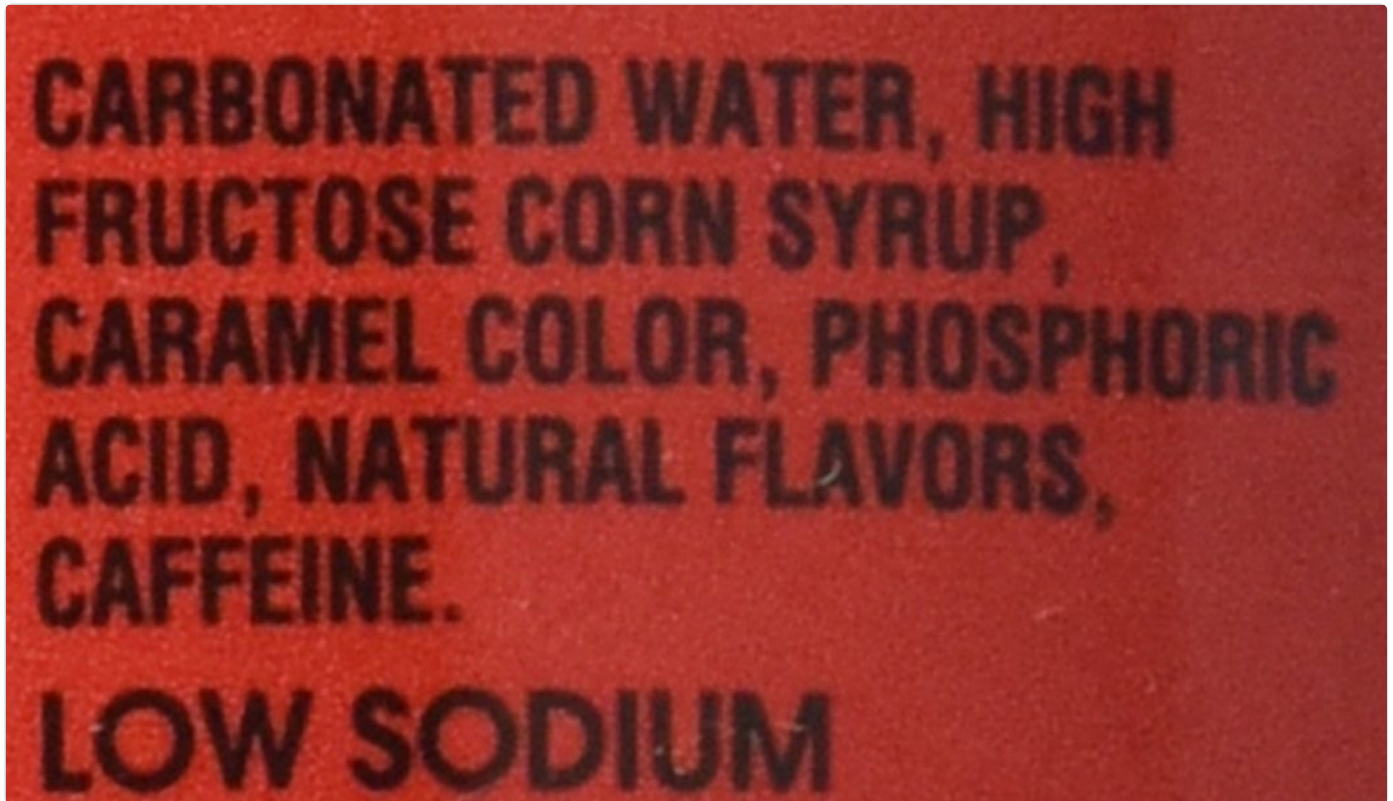


Image 7.1: A close-up view of the ingredients list on a Coca-Cola bottle label. The visible ingredients include Carbonated Water, High Fructose Corn Syrup, Caramel Color, Phosphoric Acid, Natural Flavors, and Caffeine, with a note for Low Sodium.

The primary ingredients include: Carbonated Water, High Fructose Corn Syrup, Caramel Color, Phosphoric Acid, Natural Flavors, and Caffeine. This product is low in sodium.

7.2 Nutritional Facts

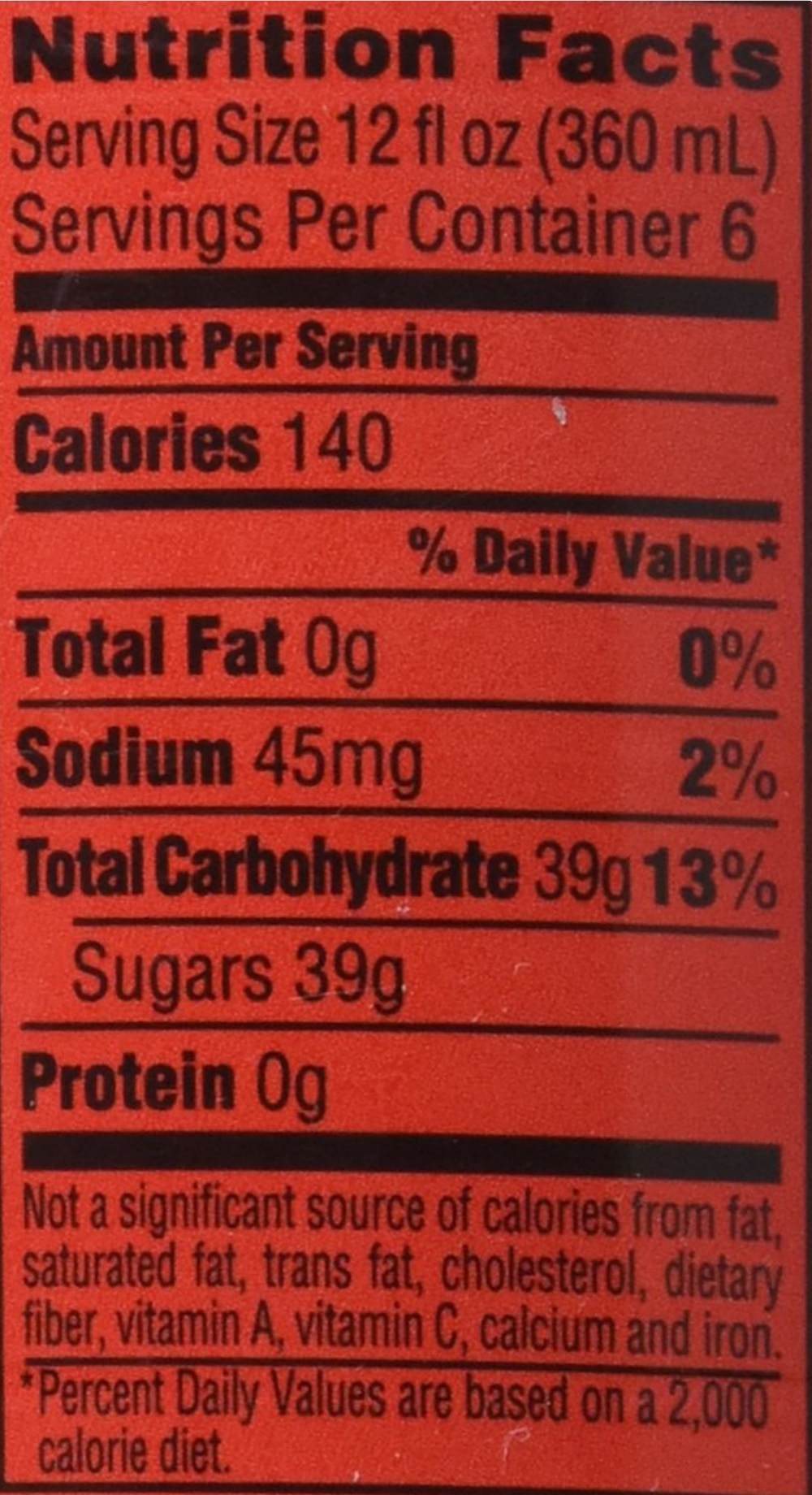


Image 7.2: A detailed view of the Nutrition Facts label for Coca-Cola. It shows a serving size of 12 fl oz (360 mL), with 6 servings per container. Per serving, it contains 140 Calories, 0g Total Fat, 45mg Sodium (2% Daily Value), 39g Total Carbohydrate (13% Daily Value), and 39g Sugars. It also states 0g Protein.

A typical serving size is 12 fl oz (360 mL). Each serving contains approximately 140 calories, 39g of sugars, and 45mg of sodium. There are 6 servings per 2 Liter bottle.

8. SAFETY INFORMATION

- **Caffeine Content:** This product contains caffeine. Individuals sensitive to caffeine, pregnant women, or children should limit or avoid consumption.
- **Dietary Considerations:** Statements regarding dietary supplements have not been evaluated by the FDA and are not intended to diagnose, treat, cure, or prevent any disease or health condition.
- **Allergens:** This product does not contain common allergens such as milk, eggs, peanuts, tree nuts, soy, wheat, fish, or shellfish.
- **Handling:** Avoid dropping the bottle, especially when full, to prevent breakage or spillage.

9. WARRANTY AND SUPPORT

This product is a consumable beverage. As such, it does not come with a traditional warranty. For concerns regarding product quality or safety, please refer to the contact information provided on the product label or visit the official Coca-Cola website for customer support.

For more information, you may visit the [Coca-Cola Store on Amazon](#).