

Gerber 163079

Gerber Plumbing 163079 92-298 Single Handle Ceramic Disc Cartridge User Manual

Brand: Gerber | Model: 163079, 92-298

1. INTRODUCTION

This manual provides detailed instructions for the installation, operation, and maintenance of the Gerber Plumbing 163079 92-298 Single Handle Ceramic Disc Cartridge. This cartridge is designed as a replacement part for specific Gerber single lever kitchen and lavatory faucets, including models 73-2401, 73-3409, and 73-3410. Proper installation and care will ensure optimal performance and longevity of your faucet.

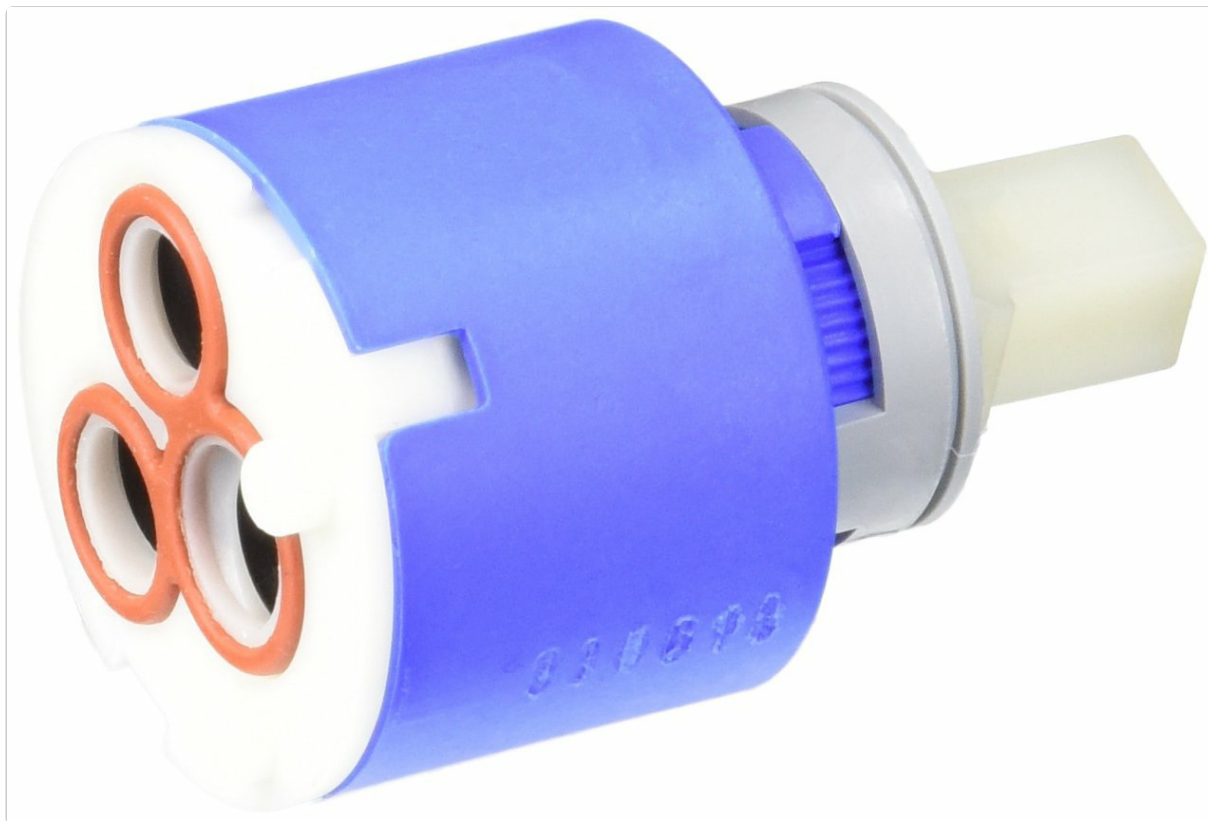


Figure 1: The Gerber 163079 92-298 Single Handle Ceramic Disc Cartridge. This image shows the cartridge with its blue housing, white ceramic disc base, and the three water inlets/outlets with orange O-rings, along with the white plastic stem for handle attachment.

2. SAFETY INFORMATION

Always observe the following safety precautions during installation and maintenance:

- **Turn off water supply:** Before beginning any work, ensure the main water supply to the faucet is completely shut off to prevent water damage.
- **Wear protective gear:** Use appropriate personal protective equipment, such as safety glasses and gloves.
- **Use correct tools:** Ensure you have the necessary tools for the job and use them correctly to avoid injury or damage to the product.
- **Consult a professional:** If you are unsure about any step, consult a qualified plumber.
- **Handle with care:** Ceramic discs are fragile; avoid dropping or applying excessive force.

3. PRODUCT OVERVIEW

The Gerber 163079 92-298 is a single handle ceramic disc cartridge designed for precise control of water flow and temperature in compatible Gerber faucets. It features a durable ceramic disc mechanism for smooth operation and a long lifespan, and includes a limit stop for temperature regulation.

Key Components:

- **Ceramic Discs:** Two highly polished ceramic discs that slide against each other to control water flow and mix hot and cold water.
- **Housing:** The main body of the cartridge, typically made of durable plastic.
- **O-Rings/Seals:** Rubber rings that create a watertight seal within the faucet body.
- **Stem:** The part that connects to the faucet handle, allowing for movement and control.
- **Limit Stop:** An adjustable component that restricts the maximum hot water temperature to prevent scalding.

4. INSTALLATION INSTRUCTIONS

This cartridge is a direct replacement for Gerber Single Lever "Hardwater" Kitchen and Lavatory Faucets (models 73-2401, 73-3409, 73-3410). It can also replace older 92-258 cartridges with minor adjustments.

Tools Required: Adjustable wrench, screwdriver (flathead and/or Phillips, depending on faucet model), pliers, penetrating oil (optional), clean cloth.

1. **Shut off Water Supply:** Locate the hot and cold water supply valves under the sink and turn them off completely. Turn on the faucet to drain any remaining water and relieve pressure.
2. **Remove Faucet Handle:** Depending on your faucet model, you may need to pry off a decorative cap to access a screw. Use a screwdriver to remove the screw and then pull the handle straight up to remove it.
3. **Remove Retaining Nut/Cap:** Carefully remove any decorative escutcheon or retaining nut that secures the cartridge in place. An adjustable wrench or pliers may be needed.
4. **Extract Old Cartridge:** Gently pull the old cartridge straight out of the faucet body. If it is stuck, try wiggling it slightly or using pliers. Avoid excessive force. Note its orientation for reference.
5. **Clean Faucet Body:** Clean any mineral deposits or debris from the faucet body opening where the cartridge sits. A clean cloth or soft brush can be used.
6. **Install New Cartridge:** Insert the new Gerber 163079 92-298 cartridge into the faucet body, ensuring it is correctly oriented. The tabs or notches on the cartridge should align with the corresponding slots in the faucet body. Ensure the O-rings are properly seated.
7. **Secure Cartridge:** Reinstall the retaining nut or cap, tightening it securely but without overtightening.

- 8. Reattach Handle:** Place the faucet handle back onto the cartridge stem and secure it with the screw. Replace any decorative caps.
- 9. Restore Water Supply:** Slowly turn on the hot and cold water supply valves. Check for leaks around the faucet base and connections.
- 10. Test Faucet:** Operate the faucet handle through its full range of motion (hot, cold, mixed, on, off) to ensure proper function and check for any drips or leaks.

Note for 92-258 Replacement: If replacing an older 92-258 cartridge, you may need to use the limiting ring provided with the new 92-298 cartridge and remove the original limiting disc with a tab from the old assembly. Ensure proper alignment for optimal performance.

5. OPERATING INSTRUCTIONS

Once installed, the Gerber 163079 92-298 ceramic disc cartridge operates seamlessly with your single handle faucet. Move the handle to control both water flow and temperature:

- Water Flow:** Lift the handle to increase water flow and push it down to decrease or stop the flow.
- Temperature Control:** Move the handle left for hotter water and right for colder water. The ceramic discs precisely mix hot and cold water to achieve the desired temperature.
- Limit Stop Adjustment:** If your faucet has an adjustable limit stop, you can set the maximum hot water temperature to prevent accidental scalding. Refer to your specific faucet’s manual for instructions on adjusting the limit stop.

6. MAINTENANCE

The ceramic disc cartridge is designed for minimal maintenance. However, following these guidelines can extend its life and ensure optimal performance:

- Regular Cleaning:** Periodically clean the faucet exterior with a soft cloth and mild soap. Avoid abrasive cleaners that can damage finishes.
- Check for Leaks:** Regularly inspect the faucet for any signs of dripping or leaks. Addressing minor issues promptly can prevent larger problems.
- Water Quality:** In areas with hard water, mineral deposits can accumulate over time. If flow issues or stiffness occur, the cartridge may need to be removed and cleaned, or replaced if heavily scaled.
- Avoid Overtightening:** When reassembling faucet components, tighten nuts and screws firmly but avoid overtightening, which can damage seals or plastic parts.

7. TROUBLESHOOTING

Refer to the table below for common issues and their potential solutions:

Problem	Possible Cause	Solution
---------	----------------	----------

Problem	Possible Cause	Solution
Faucet drips or leaks after cartridge replacement	<ul style="list-style-type: none">• Improperly seated O-rings or seals• Damaged new cartridge• Faucet body not clean• Pressure balancing assembly issue (if applicable)	<ul style="list-style-type: none">• Recheck cartridge seating and O-ring condition. Ensure no debris is present.• Inspect new cartridge for manufacturing defects.• Clean faucet body thoroughly before installation.• Consider replacing the pressure balancing assembly if the drip persists, as suggested by some users.
Reduced water flow	<ul style="list-style-type: none">• Mineral buildup in cartridge or aerator• Partially closed supply valves	<ul style="list-style-type: none">• Remove and clean or replace the cartridge. Clean or replace the aerator.• Ensure hot and cold water supply valves are fully open.
Difficulty moving handle or stiff operation	<ul style="list-style-type: none">• Mineral deposits• Lack of lubrication	<ul style="list-style-type: none">• Remove and clean the cartridge.• Apply plumber's silicone grease to O-rings during reassembly.
Water temperature inconsistent	<ul style="list-style-type: none">• Cartridge not functioning correctly• Issue with water heater or supply lines	<ul style="list-style-type: none">• Verify cartridge installation. If problem persists, cartridge may be faulty.• Check water heater settings and ensure both hot and cold lines are supplying water.

If troubleshooting steps do not resolve the issue, contact Gerber customer support or a qualified plumber.

8. SPECIFICATIONS

- **Model Number:** 163079 (also known as 92-298)
- **Product Type:** Single Handle Ceramic Disc Cartridge
- **Compatibility:** Gerber Single Lever "Hardwater" Kitchen and Lavatory Faucets (e.g., 73-2401, 73-3409, 73-3410)
- **Dimensions:** Approximately 6 x 5 x 3 inches
- **Item Weight:** Approximately 0.32 ounces
- **Manufacturer:** Gerber Plumbing
- **Material:** Ceramic, Plastic, Rubber

9. WARRANTY INFORMATION





Gerber Plumbing products are manufactured to high-quality standards. For specific warranty details regarding your 163079 92-298 Ceramic Disc Cartridge, please refer to the warranty documentation included with your original faucet purchase or visit the official Gerber Plumbing website. Keep your proof of purchase for warranty claims.

10. SUPPORT

For further assistance, technical support, or to inquire about replacement parts, please contact Gerber Plumbing customer service. You can typically find contact information on the official Gerber Plumbing website or through your product retailer.

Online Resources: [Visit the Gerber Store on Amazon](#)

Related Documents - 163079

	<p>Gerber Plumbing Fixtures Limited Lifetime Warranty Information</p> <p>Official limited lifetime warranty details for Gerber Plumbing Fixtures LLC products, covering kitchen and bath faucets, valves, and accessories. Learn about warranty terms, exclusions, and how to obtain service.</p>
	<p>Gerber Single Handle Kitchen Faucet Installation Guide and Product Information</p> <p>Comprehensive guide for Gerber single handle kitchen faucets, covering product overview, installation procedures, maintenance tips, and troubleshooting. Features various models including pull-down and bar faucets.</p>
	<p>Gerber Northerly Single Handle Pull-Down Prep Faucet Installation Guide</p> <p>Detailed installation instructions and troubleshooting guide for the Gerber Northerly Single Handle Pull-Down Prep Faucet. Learn how to properly install and maintain your new faucet.</p>
	<p>Gerber Plumbing Fixtures Limited Lifetime Warranty</p> <p>Details the limited lifetime warranty provided by Gerber Plumbing Fixtures LLC for kitchen and bath faucets, bath accessories, and valves. Covers warranty terms, exclusions, conditions, and how to obtain service.</p>

