

Soundstream SC-8F

Soundstream SC-8F 8 Farad Capacitor User Manual

Model: SC-8F

1. INTRODUCTION

This manual provides detailed instructions for the installation, operation, and maintenance of your Soundstream SC-8F 8 Farad Capacitor. This device is designed to enhance the performance of your car audio system by providing stable voltage and current to your amplifiers, especially during peak power demands. Please read this manual thoroughly before installation and use to ensure proper function and safety.

2. SAFETY INFORMATION

- Always disconnect the vehicle's negative battery terminal before beginning any electrical installation.
- Ensure all wiring is correctly sized and fused to prevent damage to the capacitor, amplifier, and vehicle's electrical system.
- Avoid mounting the capacitor in areas exposed to excessive heat, moisture, or direct sunlight.
- Handle the capacitor with care. Do not drop or subject it to severe impacts.
- Never attempt to disassemble the capacitor. There are no user-serviceable parts inside.
- Always wear appropriate safety gear, including eye protection, during installation.

3. PRODUCT OVERVIEW

The Soundstream SC-8F is an 8 Farad capacitor featuring a bright LED voltage display. It is designed for car audio systems requiring up to 4000 watts of power, providing a stable 12-16V DC input voltage. The unit includes 0 AWG power input terminals with 4 AWG reducer compatibility.



Figure 1: Top-down view of the Soundstream SC-8F 8 Farad Capacitor. The unit is black with chrome spider-web design elements and the Soundstream logo.



Figure 2: Angled view of the Soundstream SC-8F 8 Farad Capacitor, showing the illuminated blue LED voltage display on the front panel.



Figure 3: Packaging for the Soundstream SC-8F 8 Farad Capacitor, displaying the brand, model, and key specifications.

4. SETUP AND INSTALLATION

4.1 Mounting

Choose a secure, dry location for mounting the capacitor, away from heat sources and moving parts. Ensure the mounting surface is flat and stable. Use appropriate screws to firmly attach the capacitor to the chosen location.

4.2 Wiring Connections

1. **Ground Connection:** Connect a short (less than 18 inches) 0 AWG or 4 AWG ground cable from the capacitor's negative (-) terminal to a clean, bare metal chassis ground point in the vehicle. Ensure a good electrical connection.
2. **Power Connection:** Connect a 0 AWG or 4 AWG power cable from the capacitor's positive (+) terminal to the positive (+) terminal of your amplifier. This cable should be fused appropriately near the vehicle's battery.
3. **Remote Turn-On (for LED Display):** The SC-8F features a remote turn-on connection for its LED voltage display. Locate the small screw hole between the power and ground connections on the capacitor. Connect a small gauge wire (e.g., 18-22 AWG) from your amplifier's remote turn-on output to this screw hole. This will activate the LED display when your audio system turns on. *Note: A small screw is required for this connection and may not be included.*

4.3 Charging the Capacitor

Before connecting the capacitor to your amplifier, it must be charged to the vehicle's battery voltage. Failure to do so can result in a large spark and potential damage. Use the provided charging resistor for this procedure:

1. Ensure the negative (-) terminal of the capacitor is securely grounded.
2. Connect one end of the charging resistor to the positive (+) terminal of the capacitor.
3. Connect the other end of the charging resistor to the positive (+) terminal of your vehicle's battery.

4. Observe the LED voltage display. It will gradually increase as the capacitor charges. This process may take several minutes.
5. Once the LED display shows a voltage close to your vehicle's battery voltage (e.g., 12-14V), the capacitor is fully charged.
6. Disconnect the charging resistor.
7. Immediately connect the power cable from the capacitor's positive (+) terminal to your amplifier's positive (+) terminal.

Note: Some users have reported that the included resistor may only charge the capacitor to approximately 6V. If this occurs, a temporary alternative charging method using a low-wattage incandescent bulb (such as a turn signal bulb) connected in series can be used to monitor the charge more effectively until full voltage is reached.

5. OPERATION

Once properly installed and charged, the Soundstream SC-8F capacitor operates automatically. The LED voltage display will show the current voltage of your car's electrical system when the remote turn-on signal is active. This display provides real-time monitoring of your system's voltage stability.

6. MAINTENANCE

The Soundstream SC-8F capacitor requires minimal maintenance. Periodically check all wiring connections to ensure they are secure and free from corrosion. Keep the unit clean and free of dust and debris. Do not use harsh chemicals or abrasive cleaners on the capacitor's surface.

7. TROUBLESHOOTING

Problem	Possible Cause	Solution
LED Voltage Display Not Working	<ul style="list-style-type: none">• Remote turn-on wire not connected or faulty.• No power to the capacitor.• Faulty LED display.	<ul style="list-style-type: none">• Ensure the remote turn-on wire is securely connected to the small screw hole and receiving a signal from the amplifier.• Verify positive and negative power connections are secure and receiving voltage.• If connections are correct and power is present, contact Soundstream support.
Capacitor Not Charging / Low Voltage Reading	<ul style="list-style-type: none">• Improper charging procedure.• Faulty charging resistor.• Poor ground connection.	<ul style="list-style-type: none">• Review Section 4.3 "Charging the Capacitor" and ensure all steps are followed.• Try an alternative charging method (e.g., incandescent bulb in series) if the resistor seems ineffective.• Inspect the ground connection for cleanliness and security.

Problem	Possible Cause	Solution
System Voltage Still Dips	<ul style="list-style-type: none">• Capacitor capacity insufficient for system.• Under-sized wiring.• Vehicle's electrical system (alternator/battery) is inadequate.	<ul style="list-style-type: none">• Ensure the capacitor is appropriately sized for your amplifier's power output.• Verify all power and ground wiring is of adequate gauge (0 AWG or 4 AWG recommended).• Consider upgrading the vehicle's alternator, battery, or performing the "Big 3" electrical upgrade if voltage dips persist.

8. SPECIFICATIONS


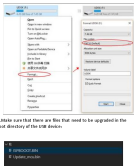
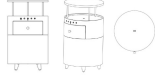


Feature	Detail
Model Number	SC-8F
Capacitance	8 Farad
Input Voltage	12-16 Volts DC
System Power Rating	Up to 4000 Watts
Power Input Terminals	0 AWG (with 4 AWG reducer)
Display	Bright LED Voltage Display
Dimensions (L x W x H)	36.83 x 22.86 x 8.89 cm (14.5 x 9 x 3.5 inches)
Weight	2.27 kg (5 lbs)
Material	Aluminum

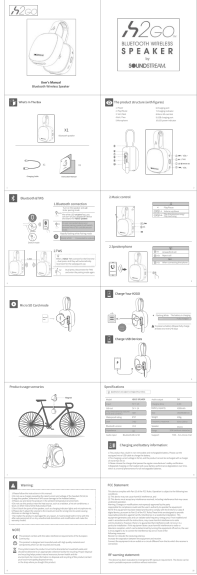
9. WARRANTY INFORMATION

Soundstream products are designed and manufactured to the highest quality standards. This product is covered by a limited manufacturer's warranty. Please refer to the warranty card included with your purchase or visit the official Soundstream website for detailed warranty terms and conditions. Keep your proof of purchase for warranty claims.

10. SUPPORT

For technical assistance, troubleshooting, or further inquiries regarding your Soundstream SC-8F capacitor, please contact Soundstream customer support. Contact information can typically be found on the official Soundstream website or on the product packaging.

<p>CAPACITOR SC1/SC2/SC4/SC8 MANUAL</p> <p>SOUNDSTREAM</p>	<p>Soundstream SC1/SC2/SC4/SC8 Capacitor Manual: Installation, Features, and Warranty</p> <p>Comprehensive manual for Soundstream SC1, SC2, SC4, and SC8 car audio capacitors. Covers specifications, installation, benefits, features, charging, discharging, wiring, and limited warranty information.</p>
<p>SOUNDSTREAM TECHNOLOGIES</p>  <p>BX-108Z Digital Bass Reconstruction Processor Owner's Manual & Installation Guide</p>	<p>Soundstream BX-108Z Digital Bass Reconstruction Processor Owner's Manual & Installation Guide</p> <p>Comprehensive owner's manual and installation guide for the Soundstream BX-108Z Digital Bass Reconstruction Processor, detailing product features, connections, settings, specifications, and troubleshooting.</p>
<p>VRCPAA-70M Software Update</p> 	<p>VRCPAA-70M Software Update Guide</p> <p>Instructions for updating the software on the VRCPAA-70M device, including formatting a USB drive, selecting upgrade types, and performing the update.</p>
<p>User's Manual ST-HALO</p>  <p>ST-HALO Home Speaker & Charging Table</p>	<p>ST-HALO Home Speaker & Charging Table User Manual</p> <p>User manual for the ST-HALO Home Speaker & Charging Table by SOUNDSTREAM, detailing assembly, specifications, functions, power, Bluetooth connectivity, charging options, and TWS pairing.</p>
<p>RESERVE by SOUNDSTREAM</p> <p>OEM UPGRADE HEAD UNIT FOR "PI-23" HARLEY-DAVIDSON MOTORCYCLES INSTALLATION GUIDE</p>  	<p>Soundstream Reserve WHD14+ Installation Guide for Harley-Davidson Motorcycles</p> <p>Detailed installation guide for the Soundstream Reserve WHD14+ OEM upgrade head unit, designed for 2014-2023 Harley-Davidson motorcycles. Covers removal of the original head unit and installation of the new unit, including electrical connections and handlebar integration.</p>



[h2GO Bluetooth Wireless Speaker User Manual](#)

User manual for the h2GO Bluetooth Wireless Speaker by Soundstream, detailing setup, features, specifications, and safety information.