

Manuals+

[Q & A](#) | [Deep Search](#) | [Upload](#)

manuals.plus /

- › [LOWRANCE](#) /
- › [Instruction Manual for Lowrance ELITE-5 DSI and MARK-5x DSI Fishfinder/Chartplotters](#)

LOWRANCE ELITE-5 DSI / MARK-5x DSI

Lowrance ELITE-5 DSI / MARK-5x DSI Fishfinder/Chartplotter Training Manual

Comprehensive Guide to Operating and Maximizing Your Lowrance Marine Electronics

INTRODUCTION

This manual serves as a comprehensive guide to understanding and effectively utilizing your Lowrance ELITE-5 DSI and MARK-5x DSI Fishfinder/Chartplotter units. Based on the instructional DVD, this guide breaks down complex features into easy-to-follow sections, ensuring you can maximize the performance of your marine electronics for navigation and fishfinding.

The content is structured to provide a step-by-step learning experience, covering everything from basic setup to advanced operational techniques for both chartplotter and fishfinder functionalities.

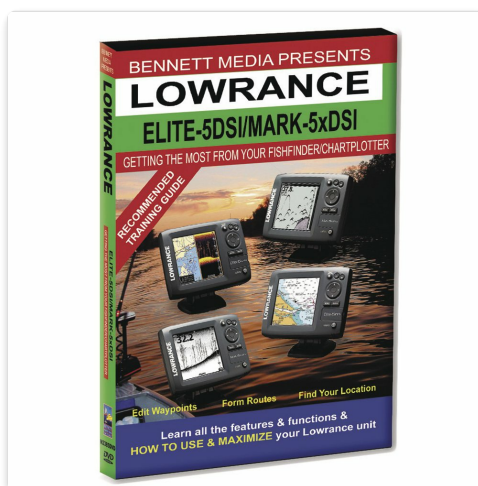


Image: Front cover of the Lowrance ELITE-5 DSI / MARK-5x DSI training DVD. The cover displays images of the Lowrance units and highlights key features such as "Edit Waypoints," "Form Routes," and "Find Your Location."

PRODUCT OVERVIEW: LOWRANCE ELITE-5 DSI / MARK-5x DSI

The Lowrance ELITE-5 DSI and MARK-5x DSI units are advanced marine electronics designed to provide detailed underwater imaging and precise navigation capabilities. The DSI (DownScan Imaging) technology offers crystal-clear, picture-like views of structure and fish beneath your boat, while the chartplotter functionality allows for accurate GPS navigation, route planning, and waypoint management.

These units are essential tools for anglers and boaters seeking to enhance their on-water experience through superior situational awareness and target identification.

SETUP AND INITIAL CONFIGURATION

Proper setup is crucial for optimal performance of your Lowrance unit. While this training DVD focuses on operation, it implicitly covers aspects of initial configuration that are vital for using the device effectively. Refer to your unit's official installation manual for physical mounting and wiring instructions.

Key Setup Concepts Covered by the Training:

- **Powering On:** Understanding the initial boot sequence and display.
- **Basic Settings:** Adjusting language, units of measurement (e.g., feet/meters, mph/knots), and time zone.
- **Transducer Connection:** Ensuring the DSI transducer is correctly recognized for optimal imaging.
- **GPS Fix:** Acquiring a satellite signal for accurate positioning and chartplotter functionality.

The training emphasizes navigating the menu system to access and modify these foundational settings, preparing the unit for active use.

OPERATING INSTRUCTIONS

This section details the operational aspects of your Lowrance ELITE-5 DSI / MARK-5x DSI, as taught by the instructional DVD. It covers both chartplotter and fishfinder functions, from basic use to advanced customization.

Chartplotter Operations

The chartplotter functionality allows for precise navigation and route management.

Basic Chartplotter Use:

- **Introduction to Chart View:** Understanding the map display, your vessel's position, and surrounding geography.
- **GPS Solution:** Verifying GPS signal strength and accuracy for reliable navigation.

Intermediate Chartplotter Functions:

- **Full Screen Chart:** Maximizing the map display for better situational awareness.
- **Editing:** Modifying existing waypoints, routes, and tracks.
- **Alarms:** Setting up various alarms such as anchor drag, off-course, or arrival alarms.

Advanced Chartplotter Customization:

- **Customizing Display:** Personalizing chart details, colors, and overlays.
- **Data Overlay:** Displaying critical information (e.g., speed, depth, temperature) directly on the chart screen.
- **Routes:** Creating, saving, and navigating complex multi-waypoint routes.
- **Tracks:** Recording your vessel's path and managing track logs for future reference.

Fishfinder Operations (DSI)

The DSI (DownScan Imaging) fishfinder provides detailed, photographic-like views of underwater structure

and fish.

Basic Fishfinder Use:

- **Full Screen Sonar:** Viewing the DSI sonar in full-screen mode for maximum detail.
- **Range Adjustment:** Setting the appropriate depth range for the current water conditions.
- **Sensitivity Control:** Adjusting the sensitivity to optimize target separation and reduce clutter.

Intermediate Fishfinder Functions:

- **Frequency Selection:** Understanding and selecting the optimal sonar frequency for different depths and target types.
- **Zooming:** Magnifying specific areas of the water column for closer inspection of structure or fish.

Advanced Fishfinder Settings and Interpretation:

- **Color Palettes:** Choosing different color schemes to enhance the visibility of targets and structure.
- **Advanced Settings:** Fine-tuning noise rejection, surface clarity, and other advanced sonar parameters.
- **Interpreting Sonar:** Learning to distinguish between fish, baitfish schools, structure (e.g., trees, rocks), and bottom composition from the DSI display.

MAINTENANCE AND CARE

While the training DVD focuses on software operation, proper physical maintenance of your Lowrance unit is essential for its longevity and performance. Always refer to the official Lowrance user manual for detailed maintenance procedures.

- **Cleaning:** Regularly clean the display screen with a soft, damp cloth. Avoid abrasive cleaners.
- **Connections:** Periodically check all cable connections (power, transducer, network) for corrosion or looseness.
- **Software Updates:** Keep your unit's software updated by visiting the official Lowrance website. This often improves performance and adds new features.
- **Storage:** When not in use for extended periods, store the unit in a dry, temperature-controlled environment, ideally disconnected from power.

TROUBLESHOOTING COMMON ISSUES

This training DVD aims to prevent many operational issues through proper instruction. However, if you encounter problems, consider the following general troubleshooting steps. For specific error codes or hardware issues, consult your unit's official Lowrance manual or contact Lowrance support.

- **No Power:** Check power cable connections, fuses, and battery voltage.
- **No Sonar Image:** Ensure the transducer is properly connected and submerged. Check transducer settings in the menu.
- **No GPS Fix:** Ensure the unit has a clear view of the sky. Check GPS antenna connection if external.
- **Screen Freezing/Unresponsive:** Try a soft reset (power cycle the unit). If persistent, a factory reset might be necessary (note: this will erase custom settings).
- **Inaccurate Readings:** Calibrate sensors if applicable (e.g., temperature). Ensure correct depth offset settings.

SPECIFICATIONS (TRAINING DVD)

The following specifications pertain to the instructional DVD itself, which is the medium for this training content.

Attribute	Value
Aspect Ratio	1.33:1
MPAA Rating	NR (Not Rated)
Product Dimensions	7.5 x 5.5 x 0.5 inches; 3.5 ounces
Item Model Number	N2385DVD
Media Format	NTSC
Run Time	40 minutes
Release Date	October 28, 2011
Number of Discs	1

Note: These specifications are for the training DVD, not the Lowrance ELITE-5 DSI or MARK-5x DSI units themselves.

WARRANTY AND SUPPORT

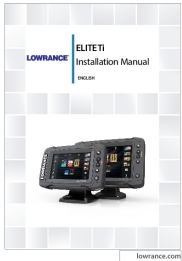
For warranty information, technical support, or service related to your Lowrance ELITE-5 DSI or MARK-5x DSI Fishfinder/Chartplotter, please refer to the official documentation included with your unit or visit the official Lowrance website. This training manual, based on the instructional DVD, is designed to enhance your understanding and operation of the units but does not replace official manufacturer support or warranty terms.

For support regarding the training DVD itself, please contact the publisher, Bennett Marine.

© 2024 Lowrance Training Manual. All rights reserved.

This manual is for informational purposes only and is based on the Lowrance ELITE-5 DSI / MARK-5x DSI instructional DVD.

Related Documents - ELITE-5 DSI / MARK-5x DSI



[Lowrance ELITE Ti Installation Manual: Your Guide to Marine Electronics Setup](#)

Install your Lowrance ELITE Ti series fishfinder and chartplotter with confidence. This comprehensive installation manual covers everything from mounting and wiring to software setup and accessories for marine navigation.



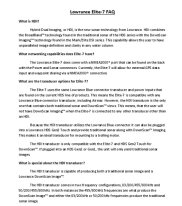
[Lowrance Elite FS Quick Guide](#)

A concise and user-friendly quick guide for the Lowrance Elite FS series, covering essential features and operations for chartplotting and fishfinding.



[Lowrance Elite FS Installation Guide](#)

Comprehensive installation guide for the Lowrance Elite FS series fishfinder/chartplotter, covering technical specifications, wiring, mounting, dimensions, and compliance information.



[Lowrance Elite-7 FAQ: Hybrid Dual Imaging, Transducers, and Networking](#)

Explore the Lowrance Elite-7 FAQ, covering Hybrid Dual Imaging (HDI) sonar technology, networking capabilities, transducer compatibility, and comparisons with other Lowrance models. Learn about HDI features, NMEA2000 connectivity, and available accessories.



[Lowrance Elite FS Installation Guide](#)

Installation guide for the Lowrance Elite FS series of fishfinders and chartplotters, detailing technical specifications, wiring, and mounting instructions.



[Lowrance Eagle 5 Installation Guide and Mounting Template](#)

This document provides installation instructions and a mounting template for the Lowrance Eagle 5 fishfinder/chartplotter. It includes technical specifications, in-the-box contents, mounting procedures, and accessory information.