

## HOLMES HAPF300AH-U4

# Holmes True HEPA Allergen Remover Filter HAPF300AH-U4 Instruction Manual

### INTRODUCTION

This document provides essential instructions for the proper use and maintenance of your Holmes True HEPA Allergen Remover Filter, model HAPF300AH-U4. This filter is designed to enhance air quality by capturing airborne particles and allergens. Please read this manual thoroughly to ensure optimal performance and longevity of your filter.

### PRODUCT OVERVIEW

The Holmes True HEPA Allergen Remover Filter (HAPF300AH-U4) is a replacement filter for compatible Holmes and Bionaire air purifiers. It features True HEPA filtration, designed to remove up to 99.97% of airborne particles as small as 0.3 microns, including dust, smoke, pollen, odors, mold spores, and pet dander.





Image 1: Holmes True HEPA Allergen Remover Filter. This image displays the front view of the filter, highlighting its pleated design and green frame with the 'aer1' logo.

## COMPATIBILITY

---

This filter is compatible with all aer1-ready Air Purifiers. Specifically, it fits the following Holmes and Bonaire air purifier models:

- **Holmes Air Purifier Models:** HAP412, HAP422, HAP424, HAP702, HAP706, HAP716, HAP1702, HAP2400, HAP9240, HAP9241, HAP9242, HAP9243, HAP9412, HAP9413, HAP9414, HAP9415, HAP9422, HAP9423, HAP9424, HAP9425
- **Bonaire Air Purifier Models:** BAP260, BAP520, BAP815, BAP825, BAP9200, BAP9700

## Compatible with Holmes AER1 Ready Air Purifier Units:



HAP9240-NWU-1  
**Aer1 Desktop Air Purifier**



HAP9412B, HAP9412BF  
**HEPA Type Air Purifier**



HAP412N-NU-1  
**HEPA Type  
Tower Air Purifier**



HAP424-NU-1  
**HEPA Type  
Tower Air Purifier**



HAP9414  
**HEPA Type Air Purifier**

+ select Bonaire air purifiers

Image 2: Compatible Air Purifier Units. This image illustrates various Holmes and Bonaire air purifier models that are compatible with the aer1 filter system.

## SETUP AND INSTALLATION

Refer to your specific air purifier's instruction manual for detailed filter replacement procedures. General steps for installing the Holmes True HEPA Allergen Remover Filter typically include:

1. Ensure the air purifier is turned off and unplugged from the power outlet.
2. Locate the filter compartment on your air purifier. This is usually found by removing a front or back cover.
3. Remove the old filter. Dispose of it according to local regulations.
4. Unpack the new Holmes True HEPA Allergen Remover Filter (HAPF300AH-U4).
5. Insert the new filter into the compartment, ensuring it is seated correctly. The filter may have specific orientation indicators.
6. Replace the air purifier cover securely.
7. Plug in and turn on your air purifier. Reset the filter indicator light if your model has one.

## OPERATING PRINCIPLES

The Holmes True HEPA Allergen Remover Filter functions as a critical component of your air purification system. Air is drawn into the purifier and passes through the filter media. The True HEPA material effectively traps microscopic particles, preventing them from recirculating into your indoor environment.

This filter is particularly effective against:

- Pollen (e.g., ragweed, grass)
- Dust and dust mite debris
- Mold spores
- Pet dander
- Smoke particles

### Helps clean air and remove allergens, pollen, and air pollutants

#### ALLERGENS & POLLEN



RAGWEED POLLEN

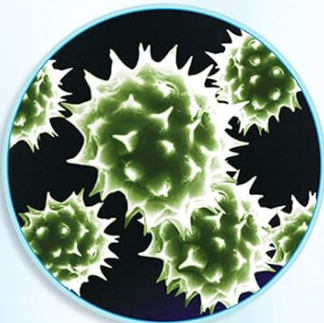


GRASS POLLEN



DUST

#### AIR POLLUTANTS



MOLD SPORES



PET DANDER



SMOKE

Image 3: Allergens and Pollutants Captured by Filter. This graphic illustrates common airborne irritants such as pollen, dust, mold spores, pet dander, and smoke, which the filter is designed to capture.

## MAINTENANCE

Regular filter replacement is crucial for maintaining the efficiency of your air purifier and ensuring clean air. The Holmes True HEPA Allergen Remover Filter requires replacement approximately every **12 to 18 months**, depending on usage and air quality conditions. This filter is designed for single use and should not be cleaned or washed.

To replace the filter:

1. Turn off and unplug your air purifier.
2. Open the filter compartment.
3. Remove the used filter.
4. Dispose of the used filter in household waste. Do not attempt to clean or reuse it.
5. Install a new Holmes True HEPA Allergen Remover Filter (HAPF300AH-U4) as per the setup instructions.
6. Reset the filter change indicator on your air purifier, if applicable.

## TROUBLESHOOTING

If your air purifier's performance seems diminished after installing a new filter, consider the following:

- **Reduced Airflow:** Ensure the filter is installed correctly and not obstructed. Check that the air purifier's intake and output vents are clear.
- **Persistent Odors/Allergens:** Verify that the filter is the correct type for your needs (e.g., True HEPA for allergens). Ensure the filter is not past its recommended replacement interval.
- **Filter Indicator Light:** If the filter change indicator light remains on after replacement, consult your air purifier's manual for instructions on how to reset it. This often involves pressing and holding a specific button for a few seconds.

For issues unrelated to the filter itself, refer to your air purifier's specific troubleshooting guide or contact the manufacturer's customer support.

## SPECIFICATIONS

Feature	Detail
Model Number	HAPF300AH-U4
Filtration Type	True HEPA
Filtration Efficiency	Up to 99.97% of particles as small as 0.3 microns
Dimensions (L x W x H)	1.25 x 10 x 4.6 inches
Item Weight	4.8 ounces
Recommended Replacement	Every 12-18 months

## WARRANTY AND SUPPORT

Warranty information for the Holmes True HEPA Allergen Remover Filter is typically provided with the original air purifier unit or can be found on the official Holmes website. For specific warranty details or customer support, please refer to the documentation included with your air purifier or visit the manufacturer's official support channels.

For further assistance, you may contact Holmes customer service through their official website or the contact information

provided in your air purifier's manual.



This instruction manual is for informational purposes only. Always refer to your air purifier's specific manual for detailed instructions.

Related Documents - HAPF300AH-U4

	<p><a href="#">Holmes Aer1 Series Air Purifier Owner's Guide and Troubleshooting</a></p> <p>Comprehensive guide for Holmes Aer1 Series Air Purifiers (HAP9241, HAP9413, HAP9425), covering filter replacement, troubleshooting, features, operations, and a 3-year limited warranty.</p>
	<p><a href="#">Holmes HAP412 Aer1 Total Air Purifier Owner's Guide</a></p> <p>Comprehensive owner's guide for the Holmes HAP412 Aer1 Total Air Purifier, detailing its features, Aer1 filter technologies, troubleshooting tips, cleaning and maintenance instructions, and warranty information.</p>
	<p><a href="#">Holmes HAP9240/HAP9412/HAP9424 Air Purifier Owner's Guide</a></p> <p>Owner's guide for Holmes HAP9240, HAP9412, and HAP9424 air purifiers. Includes detailed information on Aer1® filters, troubleshooting common issues, operating instructions, cleaning and maintenance, filter replacement procedures, and a 3-year limited warranty.</p>
	<p><a href="#">Holmes Air Purifier HAP9240, HAP9412, HAP9424 Owner's Guide: Features, Operation, and Maintenance</a></p> <p>This guide provides detailed information on Holmes Air Purifiers, models HAP9240, HAP9412, and HAP9424. It covers Aer1 filter technology, operating instructions, troubleshooting, cleaning, filter replacement, safety precautions, and warranty details.</p>
	<p><a href="#">Holmes Aer1 Air Purifier HAP9243 HAP9415 HAP9423 Owner's Guide &amp; Filter Information</a></p> <p>Owner's guide for Holmes Aer1 Series Air Purifiers (HAP9243, HAP9415, HAP9423) featuring Aer1 Allergen Remover Filters. Includes troubleshooting, filter types, warranty information, safety instructions, operation, and maintenance.</p>
	<p><a href="#">Holmes HAP9243/HAP9415/HAP9423 Air Purifier Owner's Guide and Filter Information</a></p> <p>Comprehensive owner's guide for Holmes HAP9243, HAP9415, and HAP9423 air purifiers. Includes troubleshooting, features, operating instructions, maintenance, and filter replacement details for Aer1 filters.</p>