

X-Rite EODIS3

X-Rite i1Display Pro (EODIS3) Color Calibration Device User Manual

Model: EODIS3 | Brand: X-Rite

- [Introduction](#)
- [Key Features](#)
- [Setup](#)
- [Operation](#)
- [Maintenance](#)
- [Troubleshooting](#)
- [Specifications](#)
- [Warranty & Support](#)

1. INTRODUCTION

The X-Rite i1Display Pro (Model: EODIS3) is a professional color calibration device designed to ensure the highest level of on-screen color accuracy. It is an essential tool for photographers, filmmakers, designers, and imaging professionals who require precise color representation across various displays, including monitors, laptops, mobile devices, and projectors. This device integrates ambient light measurement, monitor profiling, and projector profiling into a single, compact unit, offering fast and accurate measurements.



Image 1.1: The X-Rite i1Display Pro device connected to a laptop and tablet for color calibration.

2. KEY FEATURES

- **Industry-Leading Hardware & Software:** Provides advanced display and projector calibration with comprehensive control.
- **Increased Functionality:** Combines ambient light measurement, monitor profiling, and projector profiling in one integrated device, offering up to 5X faster measurements.
- **Mobile Friendly:** Compatible with the X-Rite ColorTRUE mobile app for calibrating Apple iOS and Android mobile devices.
- **Advanced Technology:** Incorporates technologically advanced filter and optical systems for fast measurement speed and unrivaled color accuracy on modern display and projector technologies (LED, Plasma, RG Phosphor, OLED, Wide Gamut).

- **Future Proof:** Spectrally calibrated, allowing for field-upgradeability to support future display technologies.
- **Quality Assurance:** Includes features for profile optimization, display trending, and display uniformity testing.
- **PANTONE Optimization:** Features PANTONE Spot Color optimization for precise color matching.

3. SETUP INSTRUCTIONS

1. **Software Installation:** Install the X-Rite i1Profiler software on your computer. Ensure your operating system meets the minimum requirements.
2. **Connect the Device:** Plug the X-Rite i1Display Pro device into an available USB port on your computer.
3. **Warm-up Display:** Allow your display (monitor, laptop, or projector) to warm up for at least 30 minutes before calibration to ensure stable color output.
4. **Prepare Environment:** Minimize ambient light interference. Close blinds, dim room lights, and avoid direct sunlight on the screen.
5. **Launch Software:** Open the i1Profiler application.

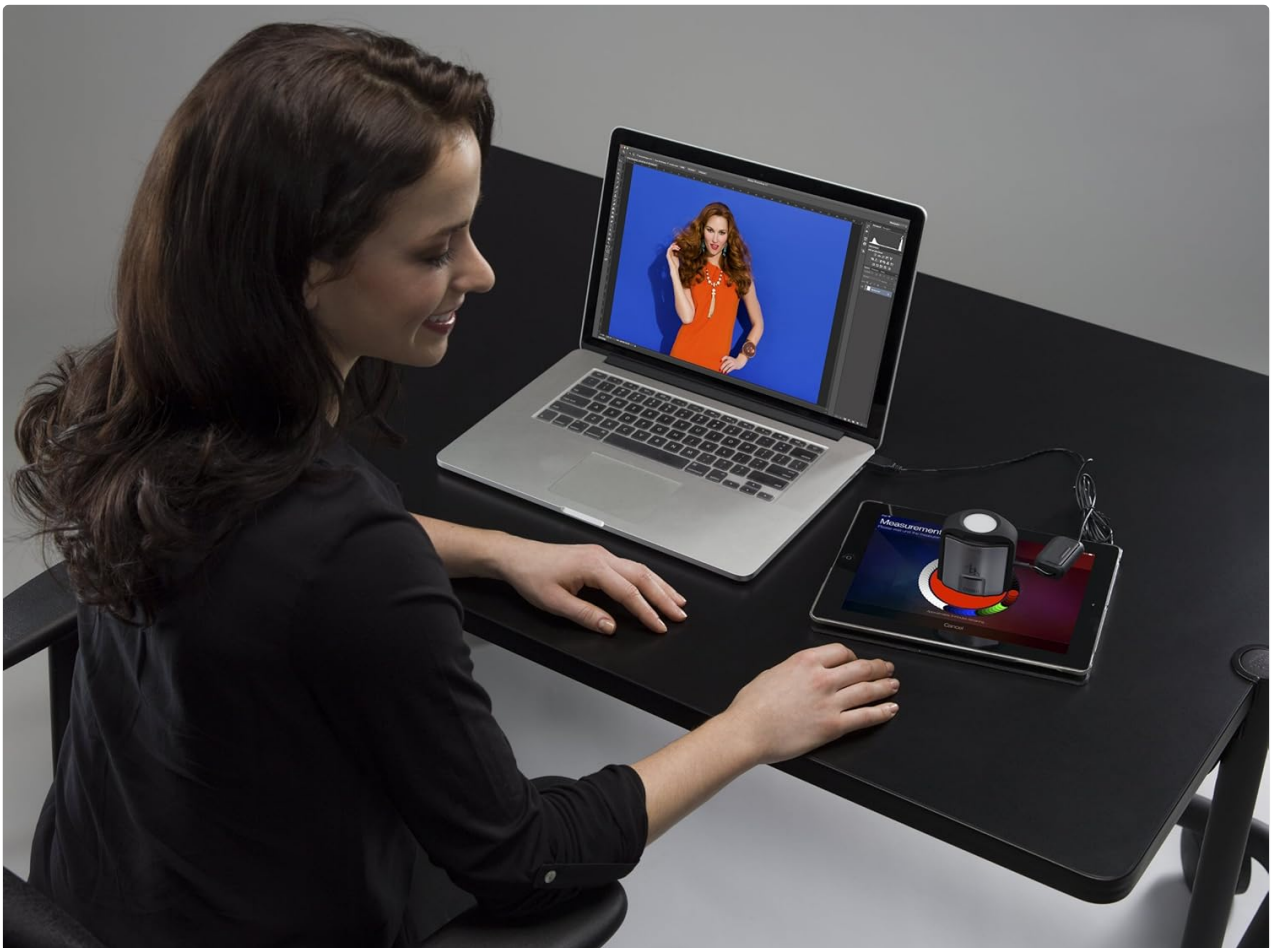


Image 3.1: The i1Display Pro connected to a laptop, ready for calibration.

4. OPERATING INSTRUCTIONS

4.1. Monitor Calibration

1. **Select Workflow:** In i1Profiler, choose either *Basic* or *Advanced* user mode. *Basic* mode offers simplified steps, while *Advanced* mode provides granular control over calibration settings.
2. **Display Type:** Select your display type (e.g., LCD, LED, OLED) and technology.
3. **White Point & Luminance:** Set your desired White Point (e.g., D65 for general photography) and Luminance (e.g., 120 cd/m²).
4. **Position Device:** Hang the i1Display Pro device over the center of your screen, ensuring it lies flat against the display surface. Use the counterweight to secure its position.
5. **Start Measurement:** Follow the on-screen prompts to begin the measurement process. The software will display a series of colors for the device to read.
6. **Save Profile:** Once measurements are complete, save your new ICC profile. It is recommended to name the profile clearly, including the monitor model and date.



Image 4.1: The i1Display Pro positioned on a monitor for accurate color measurement.

4.2. Projector Calibration

1. **Select Projector Workflow:** In i1Profiler, select the projector calibration workflow.
2. **Position Device:** Place the i1Display Pro on a tripod or flat surface, pointing it towards the projected image.
3. **Follow Prompts:** The software will guide you through the steps to calibrate your projector, displaying test patterns for measurement.
4. **Save Profile:** Save the generated ICC profile for your projector.

4.3. Mobile Device Calibration

1. **Install ColorTRUE App:** Download and install the X-Rite ColorTRUE mobile app on your Apple iOS or Android device.
2. **Connect Device:** Connect the i1Display Pro to your mobile device using an appropriate adapter (not included).
3. **Follow App Instructions:** The ColorTRUE app will guide you through the calibration process for your mobile device.



Image 4.2: The i1Display Pro calibrating a tablet for consistent color.

4.4. Quality Assurance Functions

- **Display Uniformity Testing:** Check the uniformity of your display's brightness and color across different areas of the screen.
- **Display Trending:** Monitor how your display's performance changes over time.
- **Profile Optimization:** Fine-tune your display profiles for specific needs.

4.5. Official Product Video

Video 4.1: An official overview of the X-Rite i1Display Pro and ColorChecker Passport Bundle, demonstrating its features and benefits for color management.

5. MAINTENANCE

- **Cleaning:** Gently wipe the device's sensor and casing with a soft, dry, lint-free cloth. Do not use abrasive cleaners or solvents.
- **Storage:** Store the i1Display Pro in its original packaging or a protective case when not in use to prevent dust.

accumulation and damage.

- **Software Updates:** Regularly check for and install software updates for i1Profiler to ensure compatibility with new operating systems and display technologies.
- **Recalibration:** Displays drift over time. Recalibrate your displays monthly or as recommended by the software to maintain optimal color accuracy.



Image 5.1: Close-up of the i1Display Pro's sensor, which should be kept clean for accurate measurements.

6. TROUBLESHOOTING

- **Device Not Detected:** Ensure the USB cable is securely connected to both the device and the computer. Try a different USB port or restart the computer.
- **Calibration Fails/Inaccurate:**
 - Verify the device is positioned correctly on the screen.
 - Ensure the display has warmed up for at least 30 minutes.
 - Check for excessive ambient light or glare on the screen.
 - Clean the device's sensor.
- **Software Issues:** If the i1Profiler software crashes or behaves unexpectedly, try reinstalling it. Ensure your operating system is up to date.
- **Color Discrepancies After Calibration:**
 - Ensure the correct ICC profile is active in your operating system's display settings.
 - Check that your applications are color-managed and using the correct profile.
 - Recalibrate if the display has drifted.

7. SPECIFICATIONS

Feature	Detail
Model Number	EODIS3
Product Dimensions	2 x 2 x 3 inches (5.08 x 5.08 x 7.62 cm)
Item Weight	8.8 ounces (249.48 grams)
Manufacturer	X-Rite
Mounting Type	Table Mount
Screen Surface Description	Matte

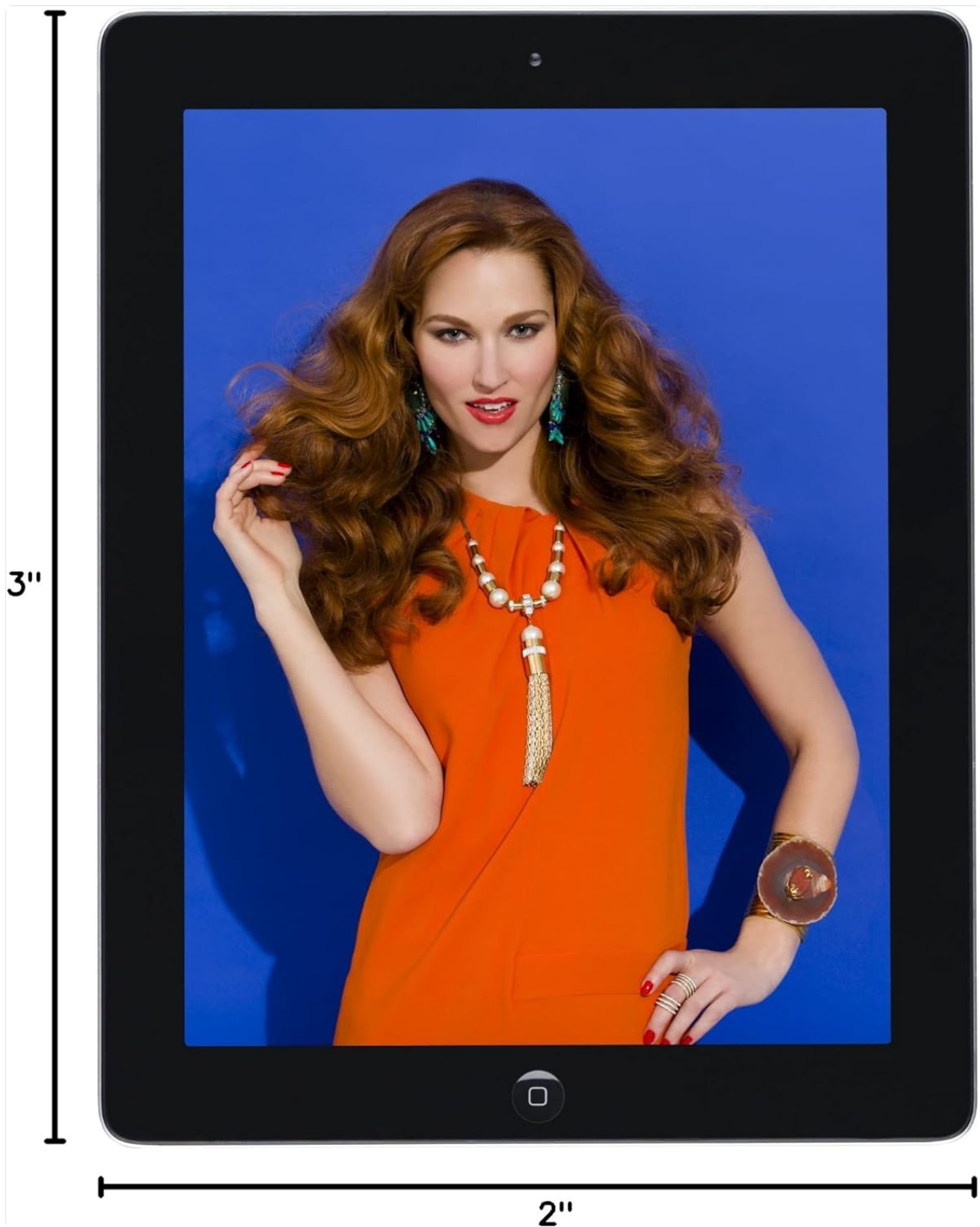


Image 7.1: Visual representation of the i1Display Pro's dimensions.

8. WARRANTY & SUPPORT

For detailed warranty information, product registration, and technical support, please visit the official X-Rite website or contact their customer service. Keep your purchase receipt as proof of purchase for warranty claims.

Online resources often include FAQs, troubleshooting guides, and software downloads to assist you with your X-Rite i1Display Pro.

