

Manuals.plus /

› Frigidaire /

› Frigidaire 241518501 Motorized Air Damper Control User Manual

Frigidaire 241518501

Frigidaire 241518501 Motorized Air Damper Control User Manual

Model: 241518501

INTRODUCTION

This manual provides detailed instructions for the installation, operation, maintenance, and troubleshooting of the Frigidaire 241518501 Motorized Air Damper Control. This genuine Frigidaire part is engineered to exact specifications to ensure optimal performance of your appliance. Please read this manual thoroughly before attempting any installation or repair.

PRODUCT OVERVIEW

The Frigidaire 241518501 is a motorized air damper control designed for use in Frigidaire refrigerators. Its primary function is to regulate the flow of cold air between the freezer and fresh food compartments, maintaining optimal temperatures in both sections.

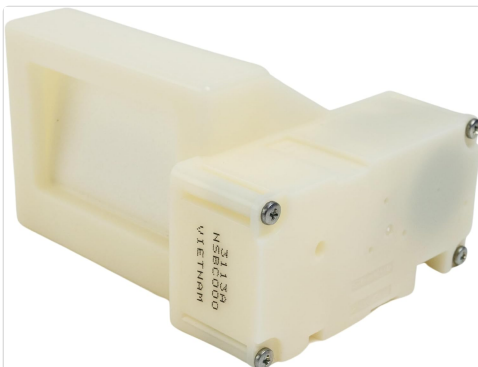


Figure 1: Front view of the Frigidaire 241518501 Motorized Air Damper Control. This image shows the main body of the damper control unit.



Figure 2: Side view of the Frigidaire 241518501 Motorized Air Damper Control, highlighting the air flow mechanism.



Figure 3: Angled view of the Frigidaire 241518501 Motorized Air Damper Control, showing its compact design.



Figure 4: Rear view of the Frigidaire 241518501 Motorized Air Damper Control, displaying the model number and manufacturing details.

COMPATIBILITY

This part is compatible with a wide range of Frigidaire refrigerator models. It is crucial to verify compatibility with your specific appliance model before purchasing and installation. Refer to your appliance's user manual or the manufacturer's website for a complete list of compatible models.

Installation Information



Skill Level:
Experienced
DIYer



Install Time:
15 minutes



Tools Required:
1/4" nut driver, cross-head
screwdriver, small flat-
head screwdriver, gloves,
safety glasses

FRIGIDAIRE

Figure 5: Compatibility information graphic, showing a partial list of compatible Frigidaire models.
Always cross-reference with your appliance's specific model number.

Some compatible models include, but are not limited to:

- 7044, SSI78, ENL629, S65629, CFD26SD, CFD26WI, CFD28SD, CFD28WI, ENL6098, ENL6298, ERL6296, ERL6297, QT5000F, S65628S, S75628K, S75628S, CFD27SDP, CFD27WIP, CFD28SDQ, CFD28WIQ, ENL6298K, ENL6298X, ERL6296K, ERL6296S, ERL6296X, ERL6297X, ERL6298X, E23CS75D, E23CS78H, FLSC238D, FLSC238J, FSC23F7D, FSC23F7F, FSC23F7H, FSC23R5D, GHSC239D, GHSC39EG, GHSC39EH, GHSC39EJ, LECR23EF, PHSC39EE, PHSC39EG, PHSC39EH, PHSC39EJ, QT5000FX, RVRF336S, S656281K, S75628SK, S756281K, WHE6700S, 970-5730, 970-7030, 970-7050, 970-7070, 970-7090, 970R7240, 970R7242, 970R7243, DGHF2360P, ECS2330DS, EI23BC30K, EI23BC35K, EI23BC36I, EI23BC51I, EI23BC55I, EI23BC56I, EI23BC60K, EI23BC65K, EI23BC80K, EI27BS16J, EI27BS26J, EI28BS36I, EI28BS51I, EI28BS55I, EI28BS56I, EI28BS65K, EI28BS80K, ENL62981K, ENL62981X, ERL6296XK, ERL6296XX, ERL6298XX, EW23BC70I, EW23BC71I, EW23BC85K, EW28BS70I, EW28BS71I, EW28BS85K, EW28BS87S, E23BC68JP, E23BC68JS, E23BC69SP, E23BC78IP, E23BC78IS, E23CS75DS, E23CS78DS, E23CS78EP, E23CS78ES, E23CS78GP, E23CS78GS, E23CS78HP, E23CS78HS, FDBC2250S, FDBG2250S, FDBN2750S, FDBS2750S, FFHB2740P, FFHB2750T, FFHN2740P, FGEB28D7Q, FGEB28D7R, FGHB2735N, FGHB2844L, FGHB2846L, FGHB2866P, FGHB2869L, FGHB2878L, FGHC2355P, FGHF2344M, FGHF2366P, FGHF2369M, FGHF2378M, FGHG2344M, FGHG2366P, FGHN2844L, FGHN2866P, FGTC2349K, FGUB2642L, FGUN2642L, FLSC23F6D, FPBC2277R, FPBG2277R, FPBS2777R, FPBS2778U, FPHB2899L, FPHB2899P, FPHF2399M, FPHF2399P, FPHG2399M, FPHG2399P, FPHN2899L, FRRC25V6D, FRRC25V6F, FRRC25V8D, FRRC25V8F, FRRC25V8G, FRSC2333A, FRSS23L3A, FRSS2323A, FRSS2333A, FRSS26L3A, FRSS2623A, FRSS2633A, FSC23BBDS, FSC23F7DS, FSC23F7HS, FSC23F7TD, FSC23LR5J, FSC23R5DS, FSGH30V8L, GHSC239TD, GHSC39EEP, GHSC39EFP, GHSC39EGP, GHSC39EHP, GHSC39EJP, GHSC39ETE, GHSC39ETH, GHSC39ETJ, GHSC39FTE, GLVC25VBD, GLVC25VBE, GLVC25VBF, GLVC25VBG, GLVC25V7D, GLVC25V7F, GLVC25V7G, GPVC25V9D, GPVC25V9F, GPVC25V9G, GRSC2352A, GRSS2352A, GRSS2652A, LECR23EFE, LFHB2741P, LFHN2741P, LGHB2867P, LGHB2869L, LGHN2844M, LGUB2642L, MRRC25V3E, MRRC25V5D, MRRC25V8D, MRRC25V8F, MRVC25VBD, MRVC25VBE, MRVC25VBF, MRVC25V9D, MRVC25V9F, MSBG30V5L, MSBH30V7L,

PHSC239DS, PHSC39EES, PRSC2222A, RSRC25V4G, RSVC25VBG, RSVC25V9G, WPVC25V9G, WRVC25VBG, WSBH30V7L, 970-57303, ERL6298XX1, FGHB2844LE, JLAFFS2007, LGHB2869LF, LGUB2642LE, RSRC25V4GM, RSRC25V4GW.

SAFETY INFORMATION

Always disconnect power to the appliance before beginning any repair or installation. Wear appropriate personal protective equipment, including gloves and safety glasses, to prevent injury. If you are unsure about any step, consult a qualified technician.

INSTALLATION

Tools Required:

- 1/4" nut driver
- Cross-head screwdriver
- Small flat-head screwdriver
- Gloves
- Safety glasses

Skill Level:

Experienced DIYer. For optimal results, it is recommended that someone with DIY experience install this part.

Estimated Installation Time:

Approximately 15 minutes.

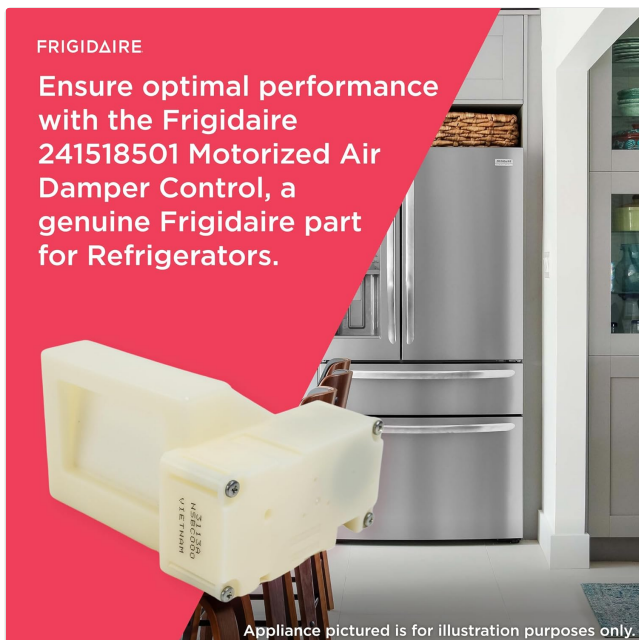


Figure 6: Installation Information graphic, summarizing the recommended skill level (Experienced DIYer), estimated installation time (15 minutes), and required tools (1/4" nut driver, cross-head screwdriver, small flat-head screwdriver, gloves, safety glasses).

Installation Steps:

1. **Disconnect Power:** Unplug the refrigerator from the power outlet or turn off the circuit breaker supplying power to

the appliance.

2. **Access Damper:** Locate the existing air damper control. This typically involves removing shelves, drawers, or interior panels within the refrigerator or freezer compartment. Refer to your refrigerator's service manual for exact panel removal instructions.
3. **Remove Old Damper:** Carefully disconnect any wiring harnesses attached to the old damper. Use the appropriate screwdriver to remove any screws securing the damper in place. Gently pull the old damper out.
4. **Install New Damper:** Connect the wiring harness to the new Frigidaire 241518501 Motorized Air Damper Control. Position the new damper in the correct location and secure it with the screws previously removed. Ensure all connections are firm and the damper is seated properly.
5. **Reassemble:** Reinstall any panels, drawers, and shelves that were removed to access the damper.
6. **Restore Power:** Plug the refrigerator back into the power outlet or turn on the circuit breaker.
7. **Test Operation:** Allow the refrigerator to run for several hours and monitor temperatures in both the freezer and fresh food compartments to ensure the new damper is functioning correctly.

OPERATING PRINCIPLES

The motorized air damper control operates by opening and closing a flap or door to regulate the flow of cold air from the freezer compartment into the fresh food compartment. This mechanism is controlled by the refrigerator's main control board, which receives temperature readings from sensors within both compartments. When the fresh food compartment requires cooling, the damper opens to allow cold air in. Once the desired temperature is reached, the damper closes to prevent over-cooling.

MAINTENANCE

The Frigidaire 241518501 Motorized Air Damper Control is a sealed unit and does not require routine maintenance. However, ensuring the area around the damper is free from ice buildup or obstructions can help maintain its optimal function. If ice buildup is observed, defrosting the refrigerator may be necessary.

TROUBLESHOOTING

If you experience issues with temperature regulation in your refrigerator, the air damper control may be a contributing factor. Below are common symptoms and potential solutions:

Symptom	Possible Cause	Solution
Fresh food compartment too warm	Damper stuck closed or not opening fully.	Inspect damper for obstructions. If clear, the damper motor may be faulty and require replacement.
Fresh food compartment too cold (freezing items)	Damper stuck open or not closing fully.	Inspect damper for obstructions. If clear, the damper motor may be faulty and require replacement.
Unusual noises from damper area	Motor malfunction or obstruction.	Disconnect power and inspect for obstructions. If noise persists after clearing, replacement is likely needed.

Note: If troubleshooting steps do not resolve the issue, professional assistance may be required. Always ensure power is disconnected before inspecting internal components.

SPECIFICATIONS

- **Part Number:** 241518501

- **Type:** Motorized Air Damper Control
- **Compatibility:** Frigidaire Refrigerators (refer to compatibility list for specific models)
- **Dimensions:** Approximately 5.3 x 4.4 x 2.1 inches (13.5 x 11.2 x 5.3 cm)
- **Weight:** Approximately 6.7 ounces (190 grams)
- **Material:** Durable plastic and electronic components

WARRANTY AND SUPPORT

Genuine Frigidaire parts are typically covered by a manufacturer's warranty. For specific warranty details, please refer to the documentation included with your purchase or contact Frigidaire customer support directly. For further assistance or technical support, visit the official Frigidaire website or contact their customer service department.

Frigidaire Official Website: www.frigidaire.com