

DoorKing 9150

DoorKing 9150 1/2hp Gate Operator User Manual

Model: 9150

1. INTRODUCTION

This manual provides essential information for the safe and efficient operation, installation, and maintenance of your DoorKing 9150 1/2hp Gate Operator. The DoorKing 9150 is a robust, continuous-duty gate operator designed for reliable performance with sliding gates, ensuring secure access control for various applications.

Please read this manual thoroughly before attempting any installation, operation, or maintenance procedures to ensure proper function and safety.

2. IMPORTANT SAFETY INFORMATION

Improper installation or use of a gate operator can cause serious injury or death. Always adhere to all safety warnings and instructions provided in this manual and on the product itself. Keep the gate area clear of obstructions and personnel during operation.

- **Professional Installation Recommended:** Installation should be performed by qualified personnel familiar with gate operator safety and electrical wiring.
- **Pinch Points:** Be aware of potential pinch points and entrapment zones created by the moving gate. Never allow children to play near the gate.
- **Emergency Access:** Ensure there is a safe and accessible method for manual gate operation in case of power failure or emergency.
- **Regular Inspection:** Periodically inspect the gate and operator for signs of wear, damage, or misalignment.
- **Authorized Use Only:** Only authorized individuals should operate the gate operator.

3. PRODUCT OVERVIEW

The DoorKing 9150 is engineered for robust performance, capable of handling gates up to 30 feet in length and weighing up to 1000 pounds under ideal conditions. For gates with the DC Convenience Open option installed, the maximum gate weight increases to 1300 pounds. It features a 1/2 HP continuous-duty motor for consistent operation.

3.1 Key Features

- Self-adjusting, no maintenance magnetic limits.
- Gate tracker reporting output.
- Partial-open feature.

- Ports for plug-in loop detectors.
- Anti-tailgating feature.

3.2 Components

The gate operator consists of a main housing, a 1/2 HP motor, control board, magnetic limit switches, and various connection ports for accessories such as loop detectors and safety devices. The internal mechanism is designed for durability and minimal maintenance.



Figure 1: Front view of the DoorKing 9150 Gate Operator, showing the internal motor and control board components.

4. SETUP AND INSTALLATION

Proper installation is critical for the safe and reliable operation of the DoorKing 9150. It is strongly recommended that installation be performed by a certified technician or a qualified installer.

1. **Site Preparation:** Ensure the gate is on level ground, in good condition, and has properly adjusted hardware. Verify that the gate length and weight are within the operator's specifications (max 30 ft, 1000 lbs; 1300 lbs with DC Convenience Open).
2. **Mounting:** Securely mount the operator on a stable, level surface adjacent to the gate, ensuring proper alignment with the gate's movement.
3. **Electrical Connections:** Connect the operator to the appropriate power source as per local electrical codes. Ensure all wiring is correctly terminated and protected.
4. **Safety Devices:** Install all required safety devices, such as photo-eyes, loop detectors, and edge sensors, to prevent entrapment and ensure safe operation. Utilize the dedicated ports for plug-in loop detectors.
5. **Limit Switch Adjustment:** The 9150 features self-adjusting magnetic limits. Follow the specific instructions in the detailed installation guide for initial setup and calibration of the gate's open and close positions.
6. **Accessory Integration:** Connect any desired access control accessories, such as keypads, card readers, or remote receivers, to the control board.

Refer to the comprehensive installation manual provided with your unit for detailed wiring diagrams and step-by-step instructions.

5. OPERATING INSTRUCTIONS

Once installed and configured, the DoorKing 9150 gate operator can be controlled via various access devices.

5.1 Basic Operation

- **Opening the Gate:** Activate the gate operator using a remote control, keypad, intercom system, or other connected access device. The gate will open to its fully open limit.
- **Closing the Gate:** After a set delay (if configured) or upon a second activation command, the gate will close to its fully closed limit. Ensure the path is clear before closing.
- **Stopping the Gate:** A second activation command during gate movement will typically stop the gate.

A third command may reverse its direction or resume movement, depending on configuration.

5.2 Partial-Open Feature

The partial-open feature allows the gate to open to a pre-set intermediate position, useful for pedestrian access or specific vehicle types. This feature is configured during installation and can be activated via a dedicated input or sequence of commands from your access device.

5.3 Anti-Tailgating Feature

The anti-tailgating feature is designed to prevent unauthorized vehicles from entering immediately after an authorized vehicle. When activated, the gate will close quickly after an authorized vehicle passes, reducing the window for tailgating. This feature typically works in conjunction with loop detectors or other vehicle detection systems.

6. MAINTENANCE

The DoorKing 9150 is designed for low maintenance, featuring self-adjusting magnetic limits. However, regular inspections are recommended to ensure optimal performance and longevity.

- **Monthly:**
 - Inspect the gate for proper alignment, smooth movement, and any signs of wear on hinges, rollers, or tracks.
 - Check all safety devices (photo-eyes, loop detectors) for proper function and cleanliness.
 - Ensure the area around the gate and operator is clear of debris and obstructions.
- **Annually:**
 - Inspect all electrical connections for tightness and corrosion.
 - Verify the integrity of the operator's mounting hardware.
 - Test the manual release mechanism to ensure it functions correctly.

For any complex maintenance or repairs, contact a qualified DoorKing service technician.

7. TROUBLESHOOTING

This section provides solutions to common issues you might encounter with your DoorKing 9150 gate operator. For problems not listed here, or if solutions do not resolve the issue, contact technical support.

Problem	Possible Cause	Solution
Gate does not move.	No power; safety device triggered; remote battery dead; manual release engaged.	Check power supply; inspect safety devices for obstructions; replace remote battery; disengage manual release.
Gate stops unexpectedly.	Obstruction detected; safety device triggered; motor overload.	Clear obstructions; check safety devices; allow motor to cool if overheated.
Gate opens/closes partially.	Limit switches misaligned; partial-open feature activated.	Refer to installation manual for limit switch adjustment; verify partial-open settings.
Remote control not working.	Dead battery; out of range; remote not programmed.	Replace battery; move closer to receiver; reprogram remote as per instructions.

8. SPECIFICATIONS

Specification	Detail
---------------	--------

Specification	Detail
Model	9150
Motor	1/2 HP Continuous-Duty
Maximum Gate Length	30 feet
Maximum Gate Weight	1000 pounds (1300 pounds with DC Convenience Open option)
Power Source	DC
Manufacturer	DoorKing
ASIN	B00542VRFG
Date First Available	July 29, 2011

Note: Maximum gate weight assumes the gate is on level ground, in good condition with properly adjusted hardware. Other external factors may affect the performance of the gate operator.

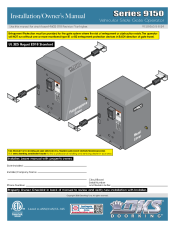

9. WARRANTY AND SUPPORT

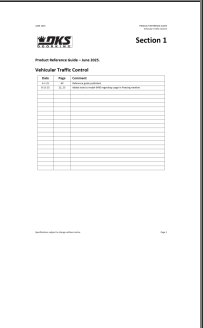

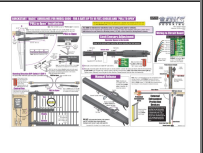

For warranty information, please refer to the documentation included with your DoorKing 9150 Gate Operator at the time of purchase. DoorKing provides a limited warranty against defects in materials and workmanship.

For technical assistance, troubleshooting beyond this manual, or to inquire about service and parts, please contact DoorKing customer support or an authorized DoorKing dealer. Ensure you have your model number and purchase date available when contacting support.

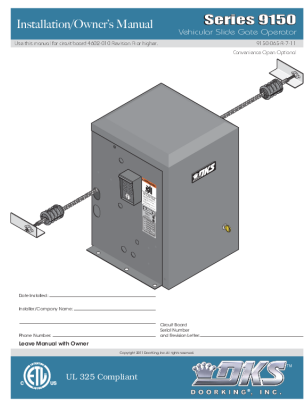
DoorKing Contact Information: Please refer to the official DoorKing website or your product packaging for the most current contact details.

Related Documents - 9150

	<p>DoorKing Series 9150 Vehicular Slide Gate Operator Installation and Owner's Manual</p> <p>Comprehensive guide for the DoorKing Series 9150 Vehicular Slide Gate Operator, covering installation, operation, safety features (UL 325 compliant), maintenance, and troubleshooting for secure access control systems.</p>
	<p>DoorKing Heater Kit Installation Guide: Models 1601-195, 1601-197, 1601-198</p> <p>This guide provides essential installation instructions for DoorKing heater kits (1601-195, 1601-197, 1601-198) designed for various DoorKing gate operators, ensuring optimal performance in cold weather conditions.</p>

	<p>DoorKing Vehicular Traffic Control Product Reference Guide</p> <p>Comprehensive guide to DoorKing's range of vehicular traffic control systems, including gate operators, traffic spikes, and accessories. Features detailed specifications, model information, and safety guidelines.</p>
	<p>DoorKing Tracker Expansion Board HARDwired Installation and Owner's Manual</p> <p>Comprehensive installation and owner's manual for the DoorKing Tracker Expansion Board (Model 2358-010), covering system integration, wiring, programming, and troubleshooting for access control and gate operator systems.</p>
	<p>DoorKing 6006 Gate Operator Quickstart Installation Guide</p> <p>Quickstart guide for installing the DoorKing 6006 gate operator for swing gates up to 18 feet and 600 lbs. Covers 'Pull to Open' installation, limit sensor adjustment, manual release, wiring, and safety features.</p>
	<p>DoorKing 6006 Vehicular Swing Gate Operator Installation and Options Manual</p> <p>Comprehensive guide for the DoorKing 6006 Vehicular Swing Gate Operator, covering mounting, 4302 control box options, safety instructions, and UL 325 entrapment protection.</p>

Documents - DoorKing – 9150



[\[pdf\]](#) User Manual Owner's Manual Specifications

9150 065 R 7 11 indd mitch freed Series manual affordableopeners manuals gate operators dks doorking |||

Installation/Owner s Manual Use this manual for circuit board 4602-010 Revision A or higher.

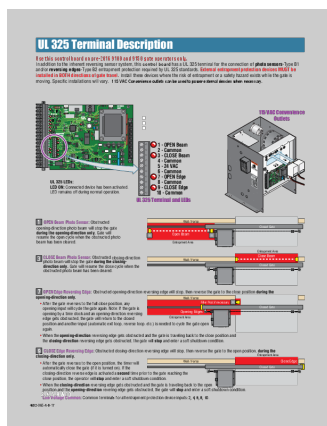
Series **9150** Vehicular Slide Gate Operator **9150-065-R-7-11** Convenience Open Optional

WARNING

SOaDoDpRMnrapoeoEdtaoeHnnORdrpfooarweoettVirehewOasailtgllnoleeaNUoafntggwrpedGS

aasecttoioeenmhnlpG.iilgNlas...

lang:en score:40 filesize: 11.56 M page_count: 56 document date: 2011-07-19

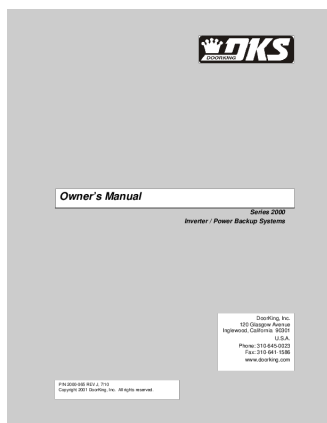


[\[pdf\]](#) User Manual Owner's Manual Installation Guide Instructions Accessories

untitled UL 325 Terminal Description DoorKing path while gate is moving Read owner s manual and safety instructions
SERIOUS INJURY OR DEATH CLASSCERTIFIED TO CAN CSA C22 2 NO 247 4602 065 A 9 17 Replacement Boards 0
dvwI9Inoau63q cloudfront net doorKing accessories manuals 80 sites default files

UL 325 Terminal Description Use this control board on pre-2016 9100 and **9150** gate operators only. In addition to the inherent reversing sensor system, this control board has a UL 325 terminal for the connection of photo sensors-Type B1 and/or reversing edges-Type B2 entrapment protection required by...

lang:en **score:36** filesize: 527.12 K page_count: 1 document date: 2017-09-07

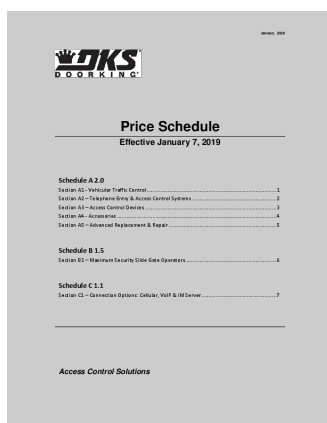


[\[pdf\]](#) User Manual Owner's Manual Instructions Specifications Accessories

12 DoorKing Inc Richard Sedivy Owner s Manual Automated Gates and Equipment This manual contains important safety operating instructions specifications for all models of the DKS Inverter Backup Power Systems is property owner equipment must be left in their possession after installation product complete doorKing accessories 2000 power inverter gate 065 J 7 10 Xantrex aegates manuals parking control 80 sites default files allgateoperatormanuals

Owner s Manual Series 2000 Inverter / Power Backup Systems P/N 2000-065 REV J, 7/10
Copyright 2001 ... ODEL 610, 615, 620, 630 1/2 hp 907, 910, 915 1/2 hp 6100, 6300, 6500 1/2 hp 9000, 9070, 9100, **9150**, 9310 1/2 hp 605,905, 6050, 9050 1601, 1603, 1100, 1150 625, 630, 915 1 hp 6300, 6500, 9000...

lang:en **score:36** filesize: 251 K page_count: 37 document date: 2010-07-20



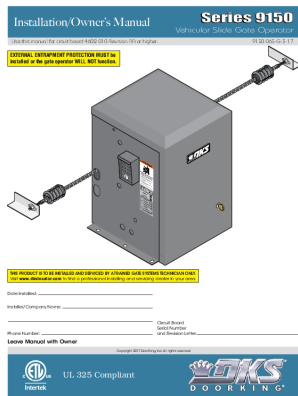
[\[pdf\]](#) User Manual Instructions Accessories

Richard Sedivy 2019 DoorKing Price Book cloudfront net Check the gate operator installation manual for a list of externa
2019doorKingpricebook jmacfiles s3 amazonaws shipped per Buyer s instructions and drop ship address is then steps
down to 26 percent in 2020 22 2021 After v 1548965146 dvwI9Inoau63q doorKing pricebooks

January, 2019 Price Schedule Effective January 7, 2019 Schedule A 2.0 Section A1 - Vehicular Traffic ... 34 Model

9150.....

lang:en **score:35** filesize: 2.37 M page_count: 180 document date: 2019-01-28

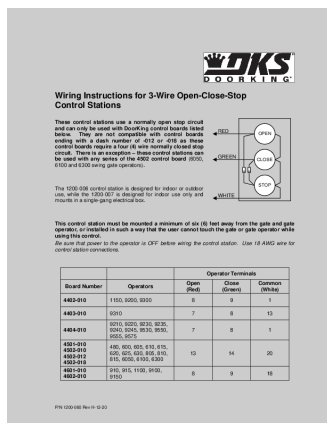


[pdf] User Manual Owner's Manual

untitled 9150 380 Manual Pre 2016DKS DoorKing 1HP Slide Gate Operator Protec Controls9150 2016cdn shopify s files 1 1320 8633 2016 v 1700223820 |||

Installation/Owner s Manual Use this manual for circuit board 4602-010 Revision AA or higher. EXTERNAL ENTRAPMENT PROTECTION MUST be installed or the gate operator WILL NOT function. Series **9150** Vehicular Slide Gate Operator **9150**-065-G-3-17 WARNING SOaDDpRoMnarpooeEdtaoehnnORdrpfooawreoettVlrehe...

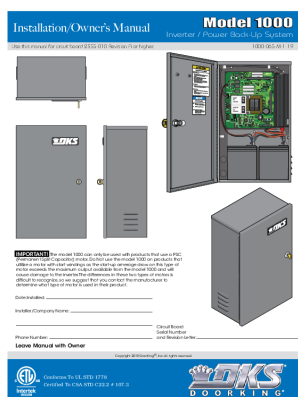
lang:en score:34 filesize: 6.97 M page_count: 48 document date: 2017-03-27



[pdf] User Manual Instructions

Richard Sedivy DoorKing Inc Wiring Instructions for 3 Wire Open Close Stop Control 2 days ago — These control stations use a normally open stop circuit and can only be used with boards listed below They are not compatible doorking 1200 00x manual 2020 12 Rev H gatedepot amfile file 59001 product 27454 ||| Wiring Instructions for 3-Wire Open-Close-Stop Control Stations These control stations use a normal ... 9575 480, 600, 605, 610, 615, 620, 625, 630, 805, 810, 815, 6050, 6100, 6300 910, 915, 1100, 9100, **9150** Operator Terminals Open Red Close Green Common White 8 9 1 7 8 13 7 8 1 13 ...

lang:en score:34 filesize: 46.46 K page_count: 1 document date: 2021-01-07

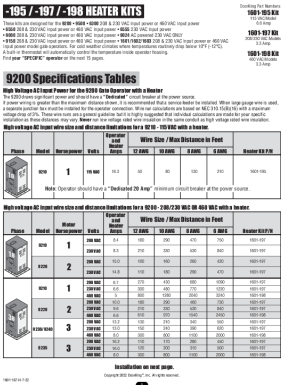
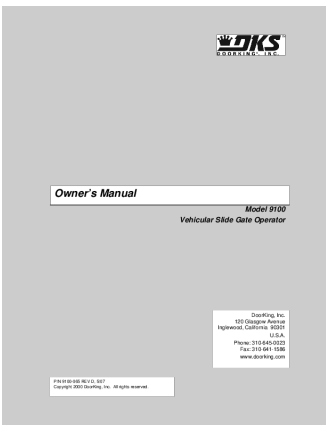
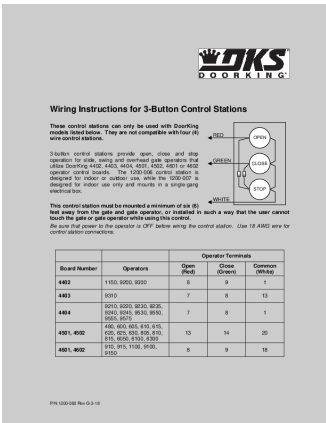
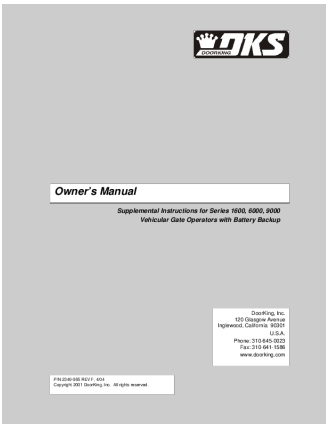


[pdf] User Manual Owner's Manual

Download Manual Doorking 1000 045 Post Mount Kit for Inverter Systems Elitegates net manual v 1631205142 cdn shopify s files 1 0141 9617 8998 |||

Installation/Owner s Manual Use this manual for circuit board 2355-010 Revision A or higher. Model ... before applying power is ALWAYS a good idea. Previously installed DoorKing Models 9050, 9100 and **9150** slide gate operators will automatically reset when switching from their old AC power source to ...

lang:en score:30 filesize: 1.7 M page_count: 16 document date: 2021-09-09



[\[pdf\]](#) User Manual Owner's Manual Instructions

DoorKing Inc Richard Sedivy 9310 Owner`s manual 1133409 archive org manualzz id

Owner s Manual Supplemental Instructions for Series 1600, 6000, 9000 Vehicular Gate Operators with B ... included in the following models 1601, 1602 Barrier Gate Operators, 6100, 6300 Swing Gate Operators, **9150**, 9300, 9310 Slide Gate Operators. DoorKing, Inc. reserves the right to make changes in the prod...

lang:en **score:30** filesize: 724.87 K page_count: 19 document date: 2004-04-14

[\[pdf\]](#) User Manual Instructions Accessories

Richard Sedivy DoorKing Inc 1200 060 G 3 18 But Cntrl3 Button Control Station Gate Operator for DoorKing Swing and Sliding Gates Indoor Use Easy Installation in Standard Box1200 Cntrlftp3 syscom mx usuarios ftp 2018 11 28 4d60b

Cntrl BoxDoorKing Garage Door Accessories Manuals Action Direct1200 Cntrl1200 007 manualftp3 Cntrlshopactiondirect content manuals manual |||

Wiring Instructions for 3-Button Control Stations These control stations can only be used with Door ... 9575 480, 600, 605, 610, 615, 620, 625, 630, 805, 810, 815, 6050, 6100, 6300 910, 915, 1100, 9100, **9150** Operator Terminals Open Red Close Green Common White 8 9 1 7 8 13 7 8 1 13 ...

lang:en **score:30** filesize: 45.5 K page_count: 1 document date: 2018-03-01

[\[pdf\]](#) User Manual Owner's Manual

28 DoorKing Inc Richard Sedivy DKS 9100 Owner s manual 1323008 archive org manualzz id

Owner s Manual Model 9100 Vehicular Slide Gate Operator P/N 9100-065 REV D, 5/07 Copyright 2000 Do ... Il not work. 9100-065-D-5-07 Figure 25 DOORKING, INC., INGLEWOOD, CA 90301 Title: Model 9100 and **9150** Control and Secondary Device Wiring A Date: 5/07 Dwg. No. 4602-CNTRL-1 Rev. Page 29 2.3 Loop ...

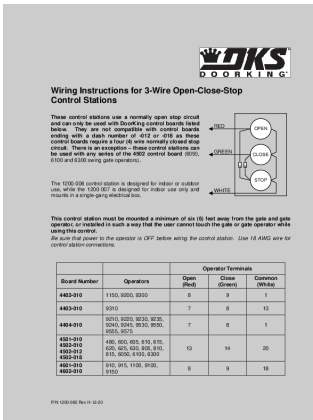
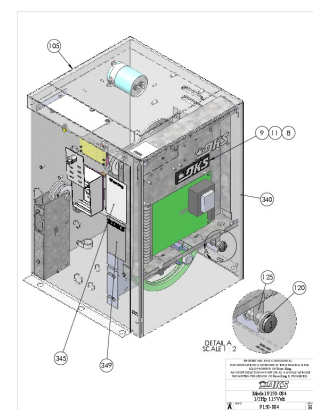
lang:en **score:30** filesize: 491.36 K page_count: 53 document date: 2008-04-28

[\[pdf\]](#) User Manual Specifications

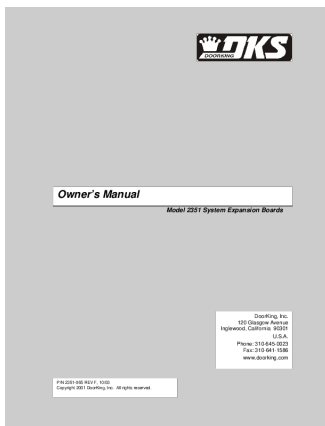
Descargar especificaciones manual Kit de calentador DoorKing 1601 198 Heaters v 1674835992 cdn shopify s files 1 0141 9617 8998 |||

-195 / -197 / -198 HEATER KITS These kits are designed for the 9200 9500 6300 208 230 VAC Input power or 460 VAC Input power 6550 208 230 VAC Input power or 460 VAC Input power 6555 230 VAC Input power 9000 208 230 VAC Input power or 460 VAC Input power 9024 AC powered 230 VAC ONLY **9150**...

lang:en **score:29** filesize: 5.16 M page_count: 16 document date: 2023-01-27



lang:en score:28 filesize: 46.45 K page count: 1 document date: 2020-12-04

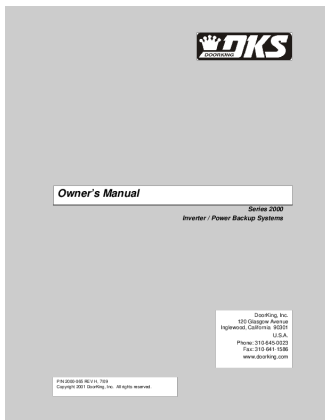


[\[pdf\]](#) User Manual Owner's Manual

DoorKing Inc Richard Sedivy DKS 1803PC Owner s manual 1150368 archive org manualzz id

Owner s Manual Model 2351 System Expansion Boards P/N 2351-065 REV F, 10/03 Copyright 2001 DoorKin ... 210, 9310 601, 602, 605, 610, 615, 620 625, 630 601, 602 6050, 6100, 6300 1100, 910, 915, 920 9100, **9150** 1601, REV Q and Higher 4402 4403 4501, REV R and Higher 4502 4601, REV J and Higher 4602 7 ...

lang:en **score:28** filesize: 878.7 K page_count: 39 document date: 2003-10-16

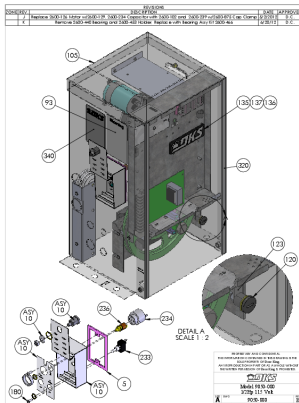


[\[pdf\]](#) User Manual Owner's Manual

8 DoorKing Inc Richard Sedivy doorking 2000 08x manual 2009 07 Rev H 1000 083 Back up Power Inverter gatedepot amfile file 42873 product 18656 |||

Owner s Manual Series 2000 Inverter / Power Backup Systems P/N 2000-065 REV H, 7/09 Copyright 2001 ... or. MODEL 610, 615, 620, 630 1/2 hp 907, 910, 915 1/2 hp 6100, 6300, 6500 1/2 hp 9070, 9100, **9150**, 9310 1/2 hp 605,905, 6050, 9050 1601, 1603, 1100, 1150 625, 630, 915 1 hp 6300, 6500, **9150**...

lang:en **score:28** filesize: 225.81 K page_count: 35 document date: 2009-07-17

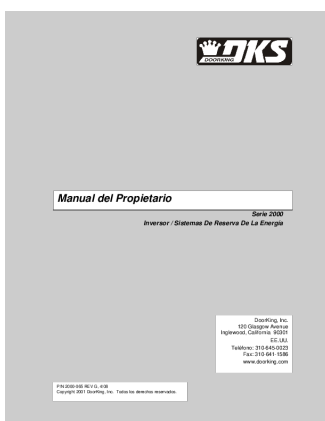


[\[pdf\]](#) Confidentiality Request Letter

9050 080 Oper Slide 115Volt Rev K DOORKING SB212 HP ENG SB2 REVISIONS ZONEREV DESCRIPTION DATE APPROVED Doorking 1 066 EA Manual Installation 5 2600 731 Gasket Switch Cover 6 4001 093 MOV Assembly 130VAC 10 533 Lockable 15 852 Accessory Box 9150 Operator 19 466 Bearing Rear 910 915 Belt Cogged gatehousesupplies product images manuals doorking sites default files

REVISIONS ZONE REV. DESCRIPTION DATE APPROVED J Replace 2600-126 Motor w/2600-129, 2600-234 Capa ... I Installation Gasket Switch Cover MOV Assembly 130VAC Switch Cover Doorking Lockable Accessory Box **9150** Operator Bearing Assembly Rear 910/915 Belt-Cogged, AX-35 Idler Bracket Left Idler Bracket Righ...

lang:tl **score:27** filesize: 1.89 M page_count: 5 document date: 2012-06-20



[\[pdf\]](#) User Manual

2 DoorKing Inc Richard Sedivy 2000 065 G 4 08 SP doorking manuals access control spanish sites default files

Manual del Propietario Serie 2000 Inversor / Sistemas De Reserva De La Energia P/N 2000-065 REV G, 4 ... r. MODELO 610, 615, 620, 630 1/2 hp 907, 910, 915 1/2 hp 6100, 6300, 6500 1/2 hp 9070, 9100, **9150**, 9310 1/2 hp 605,905, 6050, 9050 1601, 1603, 1100, 1150 625, 630, 915 1 hp 6300, 6500, **9150**...

lang:es **score:27** filesize: 265.83 K page_count: 39 document date: 2008-04-10

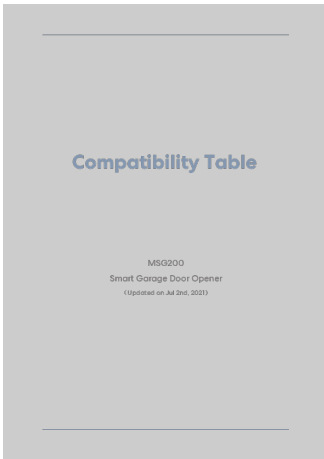


[\[pdf\]](#) User Manual Borchure

Slide gates AC DC 3 17 1 5 VEHICULAR SLIDE GATE OPERATORS Manual Release 9000 9024 Models Easy to use manual T handle 9050 9100 9150 Fail safe 4 Convenience Open Model option provides power open the gate if primary fails Safe release standard Optional Secure kit 900 brochure gatehousesupplies product images assets Doorking Adjustable direct driven limits for precise control Polyethylene cover durability Steel frame strength and DKS SlideGates Rev3 doorking sites default files seacesstech 2018 01

VEHICULAR AC DC SLIDE GATE OPERATORS Residential Apartment/College Residence Halls Gated Communities Mixed Use Buildings Commercial/Industrial Parking Self Storage AC DC POWERED Gate OPERATORS A System for All Applications DKS Fail-safe 9050 / 9100 / **9150** Pully Electronic RPM sensor CLU...

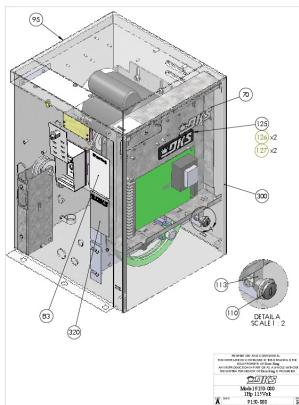
lang:en score:27 filesize: 1 M page_count: 5 document date: 2017-03-24



[Meross MSG200 Smart Garage Door Opener Compatibility Guide](#)

Find compatible garage door openers for your Meross MSG200 Smart Garage Door Opener with this comprehensive compatibility table. Lists numerous brands and models, noting accessory requirements.

lang:en score:27 filesize: 914.01 K page_count: 43 document date: 2022-07-26

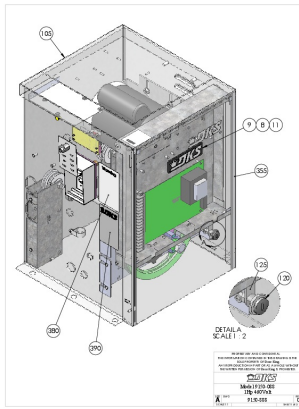


[\[pdf\]](#) Confidentiality Request Letter

Assy 9150 080 DOORKING SB212 HP ENG SB2 880 doorking 80 sites default files

95 83 320 70 125 126 x2 127 x2 300 A 113 110 DETAIL A SCALE 1 : 2 PROPRIETARY AND CONFIDENTIAL ... AS A WHOLE WITHOUT THE WRITTEN PERMISSION OF Door King IS PROHIBITED. SIZE DWG A SCALE:1:8 Model **9150-080** 1Hp 115Volt**9150-880** REV H SHEET 1 of 3 175 100 45 DETAIL J 145 SCALE 1 : 5 J 60 245 ...

lang:tl score:27 filesize: 3.66 M page_count: 5 document date: 2010-07-27

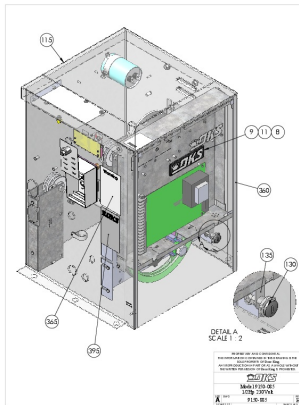


[\[pdf\]](#) Confidentiality Request Letter

Assy 9150 088 Sh1 DOORKING SB212 HP ENG SB2 888 doorking sites default files

105 380 390 9 8 11 355 A 125 120 DETAIL A SCALE 1 : 2 PROPRIETARY AND CONFIDENTIAL
THE INFORMATION CONTAINED IN THIS DRAWING IS THE SOLE PROPERTY OF Door King.
ANY REPRODUCTION IN PART OR AS A WHOLE WITHOUT THE WRITTEN PERMISSION OF
Door King IS PROHIBITED. SIZE DWG A SCALE:1:1 Model **9150-088** ...

lang:tl score:27 filesize: 2.7 M page_count: 5 document date: 2010-07-27

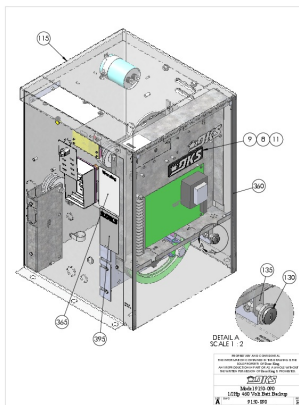


[\[pdf\]](#) Confidentiality Request Letter

Assy 9150 085 Sh1 DOORKING SB212 HP ENG SB2 885 doorking sites default files

115 365 395 9 11 8 360 A 135 130 DETAIL A SCALE 1 : 2 PROPRIETARY AND CONFIDENTIAL
THE INFORMATION CONTAINED IN THIS DRAWING IS THE SOLE PROPERTY OF Door King.
ANY REPRODUCTION IN PART OR AS A WHOLE WITHOUT THE WRITTEN PERMISSION OF
Door King IS PROHIBITED. SIZE DWG A SCALE:1:12 Model **9150-085** 1...

lang:tl score:27 filesize: 2.73 M page_count: 5 document date: 2010-07-27

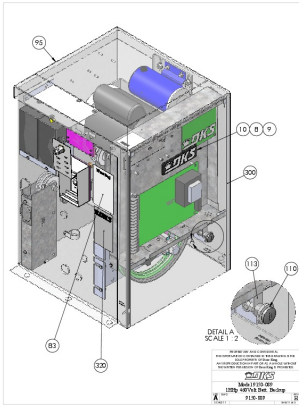


[\[pdf\]](#) Confidentiality Request Letter

Assy 9150 090 Sh1 DOORKING SB212 HP ENG SB2 890 doorking sites default files

115 365 395 9 8 11 360 A 135 130 DETAIL A SCALE 1 : 2 PROPRIETARY AND CONFIDENTIAL
THE INFORMATION CONTAINED IN THIS DRAWING IS THE SOLE PROPERTY OF Door King.
ANY REPRODUCTION IN PART OR AS A WHOLE WITHOUT THE WRITTEN PERMISSION OF
Door King IS PROHIBITED. Model **9150-090** 1/2Hp 460 Volt Batt B...

lang:tl score:27 filesize: 2.71 M page_count: 5 document date: 2010-07-27



[\[pdf\]](#) Confidentiality Request Letter

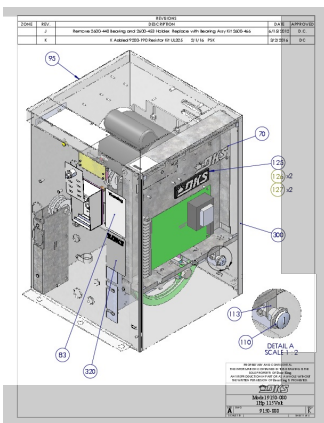
Assy 9150 089 Sh1 DOORKING SB212 HP ENG SB2 889 doorking sites default files

95 83 320 10 8 9 300 A 113 110 DETAIL A SCALE 1 : 2 PROPRIETARY AND CONFIDENTIAL
THE INFORMATION CONTAINED IN THIS DRAWING IS THE SOLE PROPERTY OF Door King.
ANY REPRODUCTION IN PART OR AS A WHOLE WITHOUT THE WRITTEN PERMISSION OF
Door King IS PROHIBITED. Model **9150-089** 1Hhp 460Volt Batt. Backu...
lang:tl **score:26** filesize: 2.77 M page_count: 5 document date: 2010-07-27

Compatible List - ES06567G		
No.	Manufacturer	Model
1	APC	CB 50-121
2	APC	CB 50-121
3	APC	CB 50-121
4	APC	CB 50-121
5	APC	CB 50-121
6	APC	CB 50-121
7	APC	CB 50-121
8	APC	CB 50-121
9	APC	CB 50-121
10	APC	CB 50-121
11	APC	CB 50-121
12	APC	CB 50-121
13	APC	CB 50-121
14	APC	CB 50-121
15	APC	CB 50-121
16	APC	CB 50-121
17	APC	CB 50-121
18	APC	CB 50-121
19	APC	CB 50-121
20	APC	CB 50-121
21	APC	CB 50-121
22	APC	CB 50-121
23	APC	CB 50-121
24	APC	CB 50-121
25	APC	CB 50-121
26	APC	CB 50-121
27	APC	CB 50-121

[ES06567G Compatible Models and Manufacturers List](#)

This document provides a comprehensive list of compatible manufacturers and models for the ES06567G system. Find compatible accessories and parts for your ES06567G.
lang:es **score:26** filesize: 491.28 K page_count: 49 document date: 2021-02-26



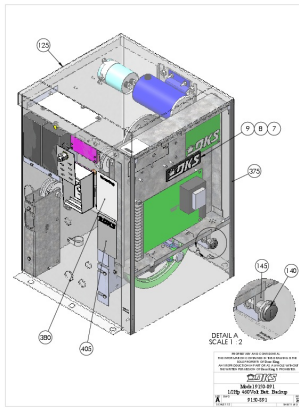
[\[pdf\]](#) Confidentiality Request Letter

9150 880 1HP 115V Rev K DOORKING DC283 HP ENG DCM doorking sites default files

ZONE REV. J K 95 REVISIONS DESCRIPTION Remove 2600-440 Bearing and 2600-453 Holder, Replace with ... AS A WHOLE WITHOUT THE WRITTEN PERMISSION OF Door King IS
PROHIBITED. SIZE DWG A SCALE:1:8 Model **9150-080** 1Hp 115Volt**9150-880** REV K SHEET 1
of 5 175 100 45 DETAIL J 145 SCALE 1 : 5 J 60 245 9...
lang:tl **score:26** filesize: 4.54 M page_count: 5 document date: 2016-03-03

lang:tl score:26 filesize: 3.74 M page count: 5 document date: 2010-08-23

lang:en score:26 filesize: 6.97 M page count: 48 document date: 2017-03-27

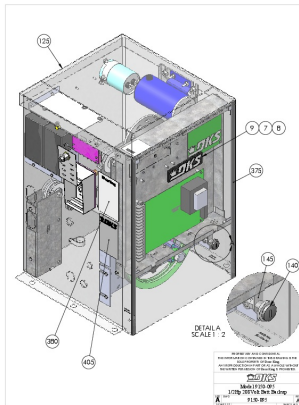


[\[pdf\]](#) Confidentiality Request Letter

Assy 9150 091 Rev 0 5HP 460V DOORKING SB212 HP ENG SB2 891 doorking sites default files

125 380 405 987 375 A 145 140 DETAIL A SCALE 1 : 2 PROPRIETARY AND CONFIDENTIAL
THE INFORMATION CONTAINED IN THIS DRAWING IS THE SOLE PROPERTY OF Door King.
ANY REPRODUCTION IN PART OR AS A WHOLE WITHOUT THE WRITTEN PERMISSION OF
Door King IS PROHIBITED. Model **9150-091** 1/2Hp 460Volt Batt. Backu...

lang:tl **score:26** filesize: 2.76 M page_count: 5 document date: 2010-07-27

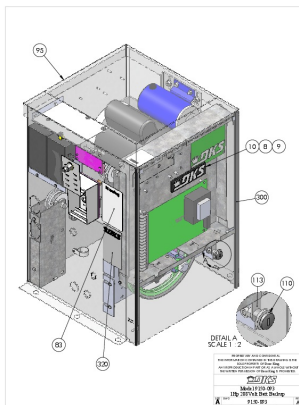


[\[pdf\]](#) Confidentiality Request Letter

Assy 9150 095 Rev 0 5HP 208V DOORKING SB212 HP ENG SB2 895 doorking sites default files

125 380 405 978 375 A 145 140 DETAIL A SCALE 1 : 2 PROPRIETARY AND CONFIDENTIAL
THE INFORMATION CONTAINED IN THIS DRAWING IS THE SOLE PROPERTY OF Door King.
ANY REPRODUCTION IN PART OR AS A WHOLE WITHOUT THE WRITTEN PERMISSION OF
Door King IS PROHIBITED. Model **9150-095** 1/2Hp 208Volt Batt Backu...

lang:tl **score:26** filesize: 2.76 M page_count: 5 document date: 2010-07-27

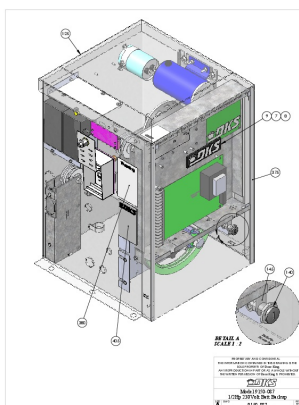


[\[pdf\]](#) Confidentiality Request Letter

Assy 9150 093 Rev 1HP BB 208v DOORKING SB212 HP ENG SB2 893 doorking sites default files

95 83 320 10 8 9 300 A 113 110 DETAIL A SCALE 1 : 2 PROPRIETARY AND CONFIDENTIAL
THE INFORMATION CONTAINED IN THIS DRAWING IS THE SOLE PROPERTY OF Door King.
ANY REPRODUCTION IN PART OR AS A WHOLE WITHOUT THE WRITTEN PERMISSION OF
Door King IS PROHIBITED. Model **9150-093** 1Hp 208Volt Batt Backu...

lang:en **score:26** filesize: 2.72 M page_count: 5 document date: 2010-07-27

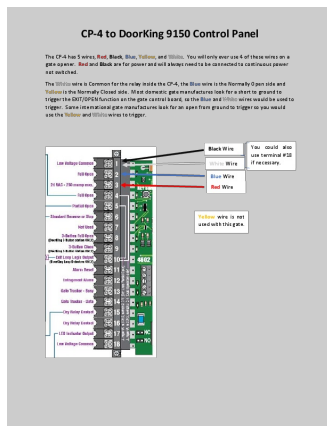


[\[pdf\]](#) Confidentiality Request Letter

Assy 9150 087 Rev L 0 5HP 230V DOORKING SB212 HP ENG SB2 887 doorking sites default files

125 380 405 978 375 A 145 140 DETAIL A SCALE 1 : 2 PROPRIETARY AND CONFIDENTIAL
THE INFORMATION CONTAINED IN THIS DRAWING IS THE SOLE PROPERTY OF Door King.
ANY REPRODUCTION IN PART OR AS A WHOLE WITHOUT THE WRITTEN PERMISSION OF
Door King IS PROHIBITED. Model **9150-087** 1/2Hp 230Volt Batt Backup ...

lang:tl **score:26** filesize: 2.78 M page_count: 5 document date: 2010-07-27

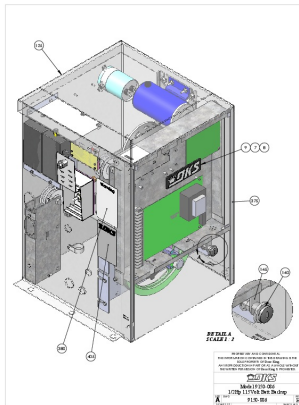


[pdf] Diagram

DoorKing 9150 to CP4 Wiring r15575 CP 4 Diagrams Cartell cartell 2022 08 |||

CP-4 to DoorKing **9150** Control Panel The CP-4 has 5 wires, Red, Black, Blue, Yellow, and White. You will only ever use 4 of these wires on a gate opener. Red and Black are for power and will always need to be connected to continuous power not switched. The White wire is Common for the relay inside th...

lang:en score:25 filesize: 80 K page_count: 1 document date: 2020-09-04



[pdf] Confidentiality Request Letter

Assy 9150 086 Rev L DOORKING SB212 HP ENG SB2 PD509211 objects eanixter

125 380 405 978 375 A 145 140 DETAIL A SCALE 1 : 2 PROPRIETARY AND CONFIDENTIAL THE INFORMATION CONTAINED IN THIS DRAWING IS THE SOLE PROPERTY OF Door King. ANY REPRODUCTION IN PART OR AS A WHOLE WITHOUT THE WRITTEN PERMISSION OF Door King IS PROHIBITED. Model **9150-086** 1/2Hp 115Volt Batt Backup ...

lang:tl score:25 filesize: 2.77 M page_count: 5 document date: 2017-11-08

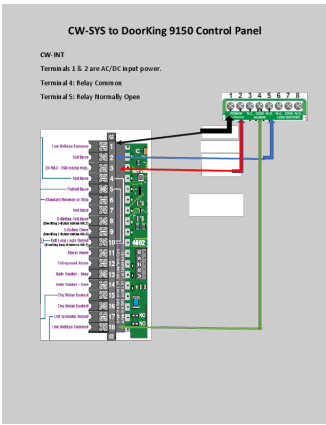


[pdf] User Manual Accessories

9150update qxd g4466 9150 v2 doorking 80 dks s

TM total access control **9150** VEHICULAR SLIDE G AT E O P E R AT O R Advanced microprocessor control board eliminates mechanical relays, switches and reversing contactors Automatic limit settings means no limit switch adjustments - ever Plug-in loop detectors simplify wiring and make installation e...

lang:en score:25 filesize: 139.46 K page_count: 2 document date: 2004-03-30

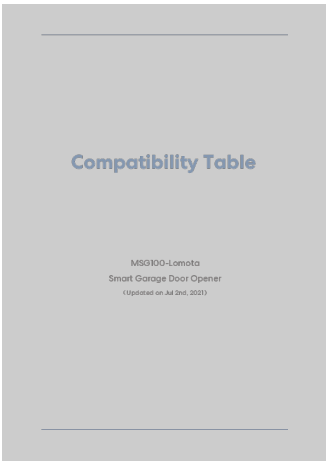


[pdf]

Robert Leidig Door King 9150 CW SYS Wiring Information Cartell DoorKing to CWSYS cartell 2022 10 |||

CW-SYS to DoorKing **9150** Control Panel CW-INT Terminals 1 2 are AC/DC input power. Terminal 4: Relay Common Terminal 5: Relay Normally Open ...

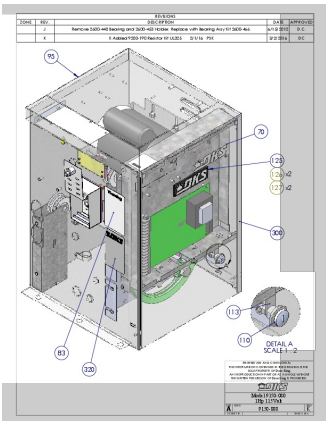
lang:en score:25 filesize: 148.95 K page_count: 1 document date: 2022-10-14



[Lomota MSG100-Lomota Smart Garage Door Opener Compatibility Table](#)

Find compatible garage door openers for the Lomota MSG100-Lomota Smart Garage Door Opener. This guide lists brands and models to ensure seamless integration.

lang:en score:24 filesize: 1.5 M page_count: 43 document date: 2021-07-14

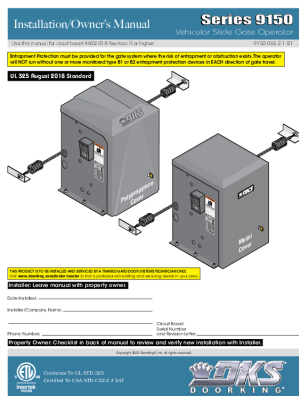


[pdf] Confidentiality Request Letter

9150 880 1HP 115V Rev K DOORKING DC283 HP ENG DCM 380 Internal Parts BreakdownDKS Doorking Slide Gate Operator Protec Controls9150 Breakdowncdn shopify s files 1 1320 8633 Breakdown v 1700223831 |||

ZONE REV. J K 95 REVISIONS DESCRIPTION Remove 2600-440 Bearing and 2600-453 Holder, Replace with ... AS A WHOLE WITHOUT THE WRITTEN PERMISSION OF Door King IS PROHIBITED. SIZE DWG A SCALE:1:8 Model **9150**-080 1Hp 115Volt **9150**-880 REV K SHEET 1 of 5 175 100 45 DETAIL J 145 SCALE 1 : 5 J 60 245 9...

lang:tl score:24 filesize: 4.54 M page_count: 5 document date: 2016-03-03



[pdf]

untitled 9150 065 newaffordableopeners manuals Manufacturer doorking new |||

...

lang:en score:24 filesize: 7.59 M page_count: 54 document date: 2021-01-04