

DEWALT DCD780C2

DEWALT DCD780C2 20V MAX Lithium-Ion Compact Drill/Driver Kit User Manual

Model: DCD780C2

1. INTRODUCTION

This manual provides essential instructions for the safe operation, setup, and maintenance of your DEWALT DCD780C2 20V MAX Lithium-Ion Compact Drill/Driver Kit. Please read this manual thoroughly before using the tool to ensure proper function and to prevent injury.

Kit Contents:

- One (1) DEWALT DCD780 1/2" Drill/Driver
- Two (2) 20V MAX* 1.5 Ah Lithium-Ion Battery Packs
- One (1) 30-Minute Fast Charger
- One (1) Belt Hook
- One (1) On-board Bit Holder
- One (1) Hard Plastic Storage and Carrying Case



Figure 1: DEWALT DCD780C2 Kit Contents. The image displays the complete kit including the drill/driver, two 20V MAX lithium-ion batteries, a charger, and a black and yellow carrying bag.

2. GENERAL SAFETY INSTRUCTIONS

Always follow basic safety precautions when using power tools to reduce the risk of fire, electric shock, and personal injury. Keep this manual for future reference.

Work Area Safety:

- Keep the work area clean and well-lit. Cluttered or dark areas invite accidents.
- Do not operate power tools in explosive atmospheres, such as in the presence of flammable liquids, gases, or dust.
- Keep children and bystanders away while operating a power tool.

Electrical Safety:

- Avoid body contact with earthed or grounded surfaces such as pipes, radiators, ranges, and refrigerators.
- Do not expose power tools to rain or wet conditions. Water entering a power tool will increase the risk of electric shock.

Personal Safety:

- Always wear eye protection. Use a dust mask, non-skid safety shoes, hard hat, or hearing protection for appropriate conditions.

- Dress properly. Do not wear loose clothing or jewelry. Keep hair and clothing away from moving parts.
- Stay alert, watch what you are doing, and use common sense when operating a power tool.

3. COMPONENTS OVERVIEW

Familiarize yourself with the main parts of your DEWALT DCD780C2 drill/driver for safe and effective operation.



Figure 2: DEWALT DCD780C2 Drill/Driver. This image shows the side profile of the drill, highlighting the chuck, clutch settings, speed selector, trigger, handle, and battery interface.

- **Chuck:** Holds drill bits and driver bits securely.
- **Clutch/Torque Adjustment Collar:** Allows selection of torque settings for driving screws or a drill mode for drilling.

- **Speed Selector Switch:** Controls the two-speed transmission (0-600 RPM and 0-2,000 RPM).
- **Trigger Switch:** Activates the drill and controls variable speed.
- **Forward/Reverse Button:** Changes the direction of rotation.
- **LED Work Light:** Illuminates the work area.
- **Battery Release Button:** Used to remove the battery pack.
- **Belt Hook:** For convenient temporary storage of the tool.
- **On-board Bit Holder:** Stores a spare driver bit.

4. SETUP

4.1. Charging the Battery Pack

1. Plug the charger into a standard electrical outlet.
2. Slide the battery pack onto the charger until it clicks into place. The charger indicator light will show the charging status.
3. A fully discharged battery typically charges in approximately 30 minutes.
4. Once charging is complete, remove the battery pack from the charger.

4.2. Attaching and Removing the Battery Pack

- **To Attach:** Align the battery pack with the base of the tool and slide it in until it clicks securely into place.
- **To Remove:** Press the battery release button (located on the front of the battery pack) and slide the battery pack out of the tool.



Figure 3: Battery Pack Attachment. This image shows a close-up of the 20V MAX lithium-ion battery pack securely

inserted into the base of the drill/driver.

4.3. Installing and Removing Drill/Driver Bits

1. Ensure the tool is off and the forward/reverse button is in the center (locked) position to prevent accidental starting.
2. Rotate the chuck collar counter-clockwise to open the chuck jaws.
3. Insert the desired drill bit or driver bit into the chuck. Ensure the bit is centered.
4. Rotate the chuck collar clockwise to tighten the chuck jaws firmly around the bit. Hand-tighten for best grip.
5. To remove, rotate the chuck collar counter-clockwise and pull the bit out.



Figure 4: On-board Bit Holder. This image displays a close-up of the drill's base, showing a driver bit stored in the integrated bit holder, located above the battery.

5. OPERATING INSTRUCTIONS

5.1. Selecting Speed

The DCD780C2 features a two-speed transmission for various applications:

- **Speed 1 (0-600 RPM):** Use for high-torque applications such as driving large fasteners or drilling large diameter holes.
- **Speed 2 (0-2,000 RPM):** Use for high-speed drilling applications with smaller bits.

To change speeds, slide the speed selector switch located on top of the drill. Ensure the drill is stopped before changing speeds.

5.2. Adjusting Torque (Clutch Settings)

The torque adjustment collar allows you to select the amount of torque applied. This is particularly useful when driving screws to prevent over-driving or stripping. Rotate the collar to align the desired setting with the arrow on the drill body.

- **Numbered Settings (1-15):** Lower numbers for smaller screws or softer materials; higher numbers for larger screws or harder materials.
- **Drill Symbol:** For drilling applications, set the collar to the drill symbol for maximum torque.

5.3. Using the LED Work Light

The integrated LED work light illuminates the work surface when the trigger is pressed. It features a 20-second delay, remaining on briefly after the trigger is released to provide continued visibility in dimly lit areas.

5.4. Drilling and Driving Techniques

- Always hold the tool firmly with both hands, especially during high-torque applications.
- Apply steady, even pressure. Do not force the tool.
- For drilling, start with a slow speed to create a pilot hole, then increase speed as needed.
- For driving screws, select an appropriate clutch setting to prevent over-driving.



Figure 5: Overhead Fastening. A worker is shown using the DEWALT DCD780C2 drill/driver to fasten components in an overhead application, demonstrating its compact design for tight spaces.

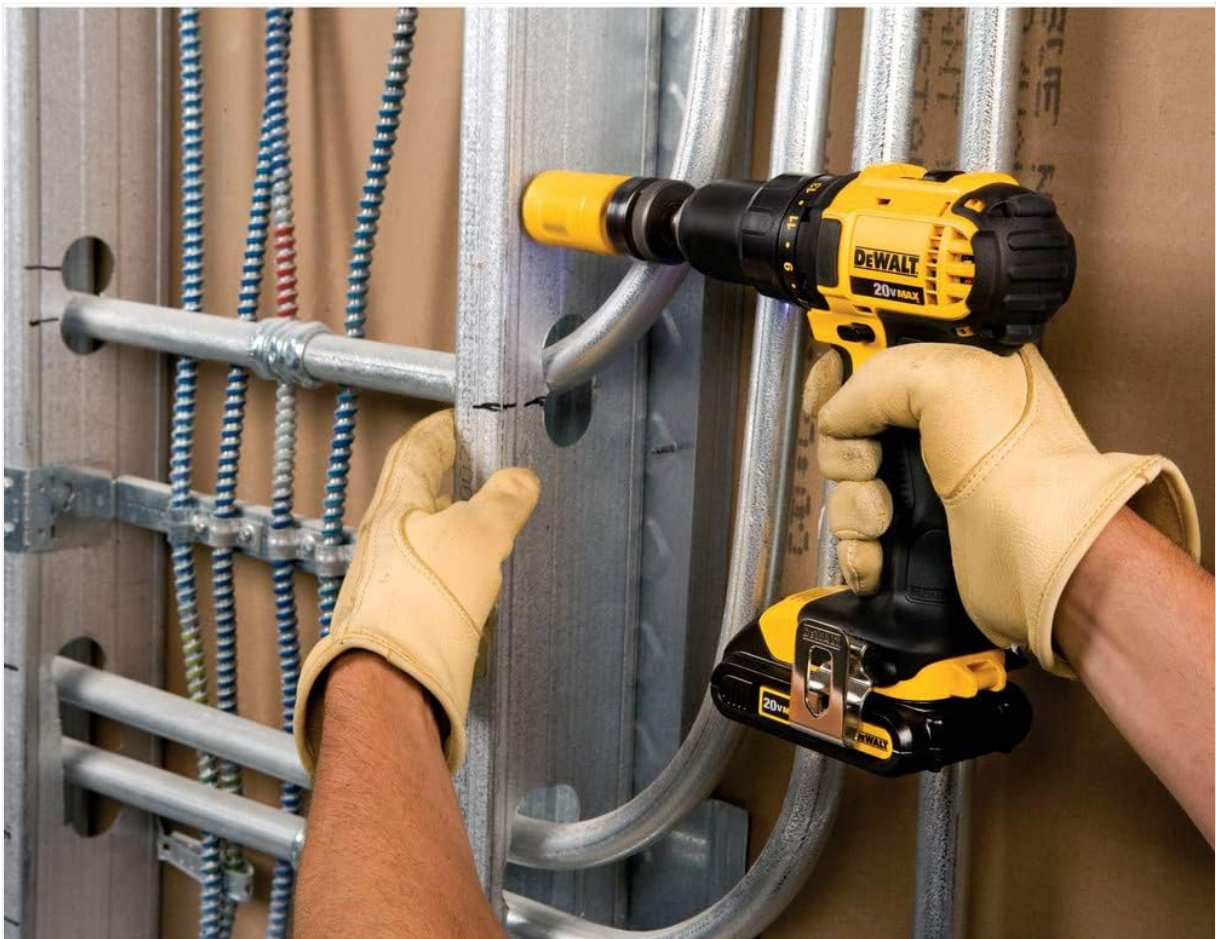


Figure 6: Wall Drilling. This image shows a worker drilling into a wall with the DEWALT DCD780C2, illustrating its use in general construction tasks.



Figure 7: Conduit Drilling. A worker is using the DEWALT DCD780C2 to drill through metal conduit, showcasing the tool's capability for various materials.

6. MAINTENANCE

6.1. Cleaning

- Keep the ventilation slots clear to prevent overheating.
- Use a soft, damp cloth to clean the exterior of the tool. Do not use harsh chemicals or abrasive cleaners.
- Periodically blow compressed air into the motor housing to clear dust and debris.

6.2. Storage

- Store the tool and battery packs in a cool, dry place, away from direct sunlight and extreme temperatures.
- Always remove the battery pack from the tool before storage.

- Use the provided hard plastic case for organized and protected storage.

7. TROUBLESHOOTING

Problem	Possible Cause	Solution
Tool does not start.	Battery not charged or improperly inserted.	Ensure battery is fully charged and properly seated in the tool.
Reduced power or performance.	Battery charge is low; tool is overloaded.	Recharge battery. Reduce load on the tool; use appropriate speed/torque setting.
Bit slips in chuck.	Chuck not tightened sufficiently; worn bit shank.	Ensure chuck is hand-tightened firmly. Replace worn bits.
Tool overheats.	Continuous heavy use; blocked ventilation.	Allow tool to cool down. Clear ventilation slots.

8. SPECIFICATIONS

Feature	Detail
Model Number	DCD780C2
Voltage	20V MAX
Battery Type	Lithium-Ion
Battery Capacity	1.5 Ah
No Load Speed (Speed 1)	0-600 RPM
No Load Speed (Speed 2)	0-2,000 RPM
Chuck Size	1/2 inch
Chuck Type	Ratcheting
Maximum Power	300 Watts
Item Weight	0.3 ounces (tool only, without battery)
Product Dimensions	12.5 x 1 x 3.75 inches
UPC	885911209809

9. WARRANTY AND SUPPORT

9.1. Warranty Information

Your DEWALT DCD780C2 Drill/Driver Kit is covered by a **3-Year Limited Warranty**. This warranty covers defects in material or workmanship. For full warranty terms and conditions, please refer to the warranty card included with your product or visit the official DEWALT website.

9.2. Customer Support

For technical assistance, service, or to locate an authorized service center, please visit the official DEWALT website at www.dewalt.com or contact DEWALT customer service directly. Please have your model number (DCD780C2) and serial number available when contacting support.