

## Escali 157

# Escali Arti Digital Food Scale Instruction Manual

Model: 157

## INTRODUCTION

---

Thank you for choosing the Escali Arti Digital Food Scale. This multi-functional kitchen appliance is designed for precise weight measurement and portion control, making baking and cooking simple and accurate. This manual provides essential information for setup, operation, maintenance, and specifications of your new scale.



*Image: The Escali Arti Digital Food Scale, Frost White, showcasing its sleek design and digital display.*

## KEY FEATURES

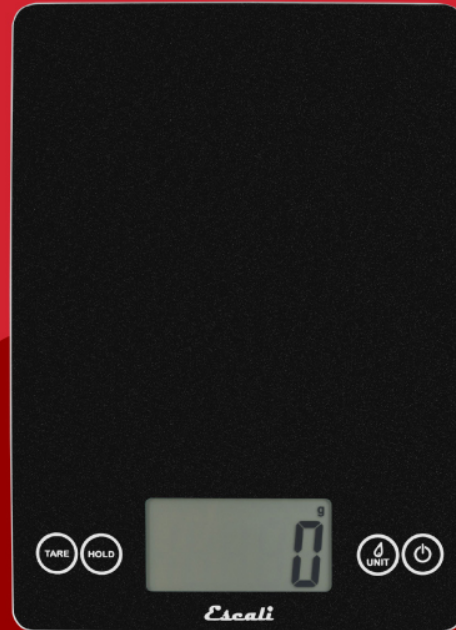
---

- **High Capacity:** Capable of weighing liquid and dry ingredients up to 15 pounds (7,000 grams).
- **Precise Accuracy:** Measures with an accuracy of 0.1 ounces (1 gram).
- **Large Display:** Crisp and clear display, 50% larger than commonly found on kitchen scales.
- **Touch Sensitive Controls:** Seamless glass surface with integrated touch controls for easy cleaning.
- **Multiple Units:** Measures in liquid (fl oz, ml) and dry ingredients (g, oz, lb + oz).
- **Display Hold:** Holds weight measurements on screen for large items, even after removal.
- **Tare Feature:** Resets the scale to zero weight to measure multiple items or subtract container weight.
- **Automatic Shut-off:** Turns off after five minutes of inactivity to conserve battery life.

**Escali.**

# Arti Glass Kitchen Scale

Experience precision and style with the Escali Arti Digital Scale, perfect for every kitchen. Its sleek design and touch-sensitive controls make measuring effortless and enjoyable. Ideal for both beginner cooks and professional chefs!



*Image: A visual representation highlighting the key features of the Escali Arti scale, including its smooth glass platform, touch-sensitive controls, large digital display, and the Tare, Hold, Unit, and Power buttons.*

## SETUP

---

### Battery Installation

The Escali Arti Digital Food Scale requires two CR2032 lithium metal batteries (included). Follow these steps for proper installation:

1. Locate the battery compartment on the underside of the scale.
2. If present, gently pull out any plastic tab from the battery compartment. The tab may be tight, pull firmly to remove.
3. Open the battery compartment cover.
4. Insert the two CR2032 batteries, ensuring correct polarity (+/-). If the scale does not turn on, use a screwdriver to remove the screw securing the battery door, open the compartment, and firmly push down on both batteries to seat fully.
5. Close the battery compartment cover securely.

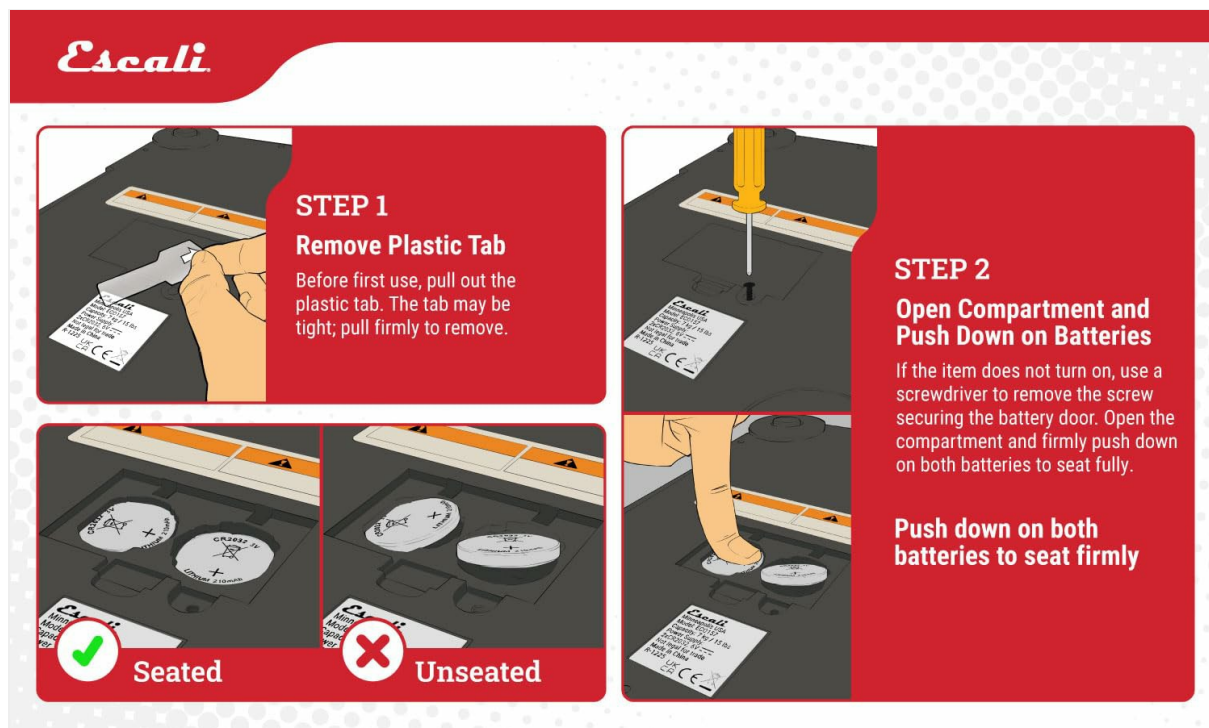


Image: A step-by-step visual guide for battery installation, illustrating how to remove the plastic tab and properly seat the CR2032 batteries.

## OPERATING INSTRUCTIONS

### Power On/Off

- To turn the scale **ON**, press the **Power** button (usually marked with a circle and a vertical line).
- To turn the scale **OFF**, press and hold the **Power** button for a few seconds. The scale will also automatically shut off after five minutes of inactivity.

### Unit Selection

The scale can measure in various units for both dry and liquid ingredients:

- Press the **Unit** button (usually marked with a drop icon) to cycle through available measurement units: grams (g), ounces (oz), pounds + ounces (lb + oz), fluid ounces (fl oz), and milliliters (ml).
- Select the desired unit before weighing your ingredients.

### Tare Feature

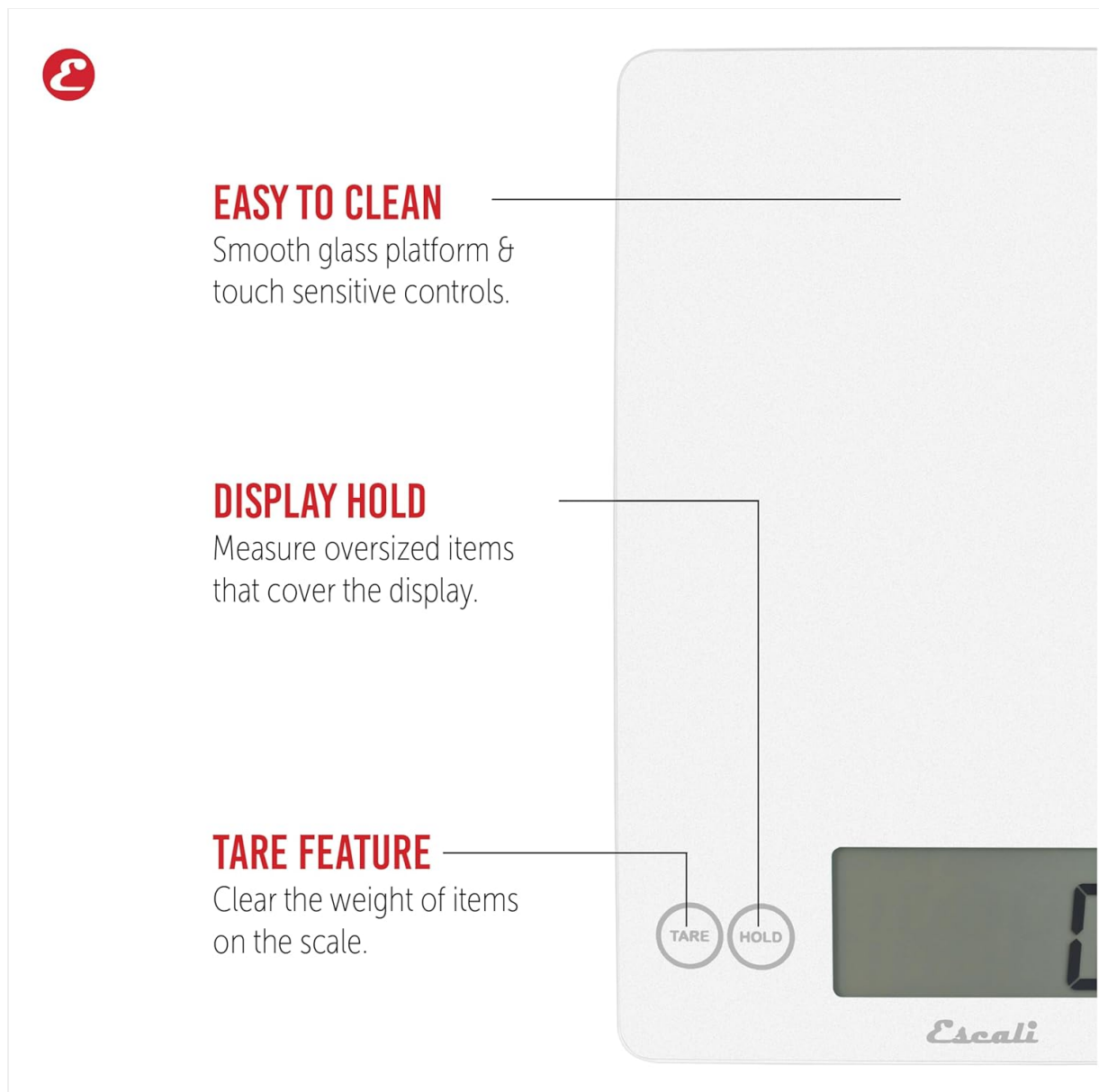
The Tare feature allows you to subtract the weight of a container or measure multiple ingredients in the same bowl:

- Place an empty container on the scale. The display will show its weight.
- Press the **Tare** button. The display will reset to zero.
- Add your first ingredient. The display will show only the weight of the ingredient.
- To add another ingredient, press **Tare** again to reset the display to zero, then add the next ingredient. Repeat as needed.

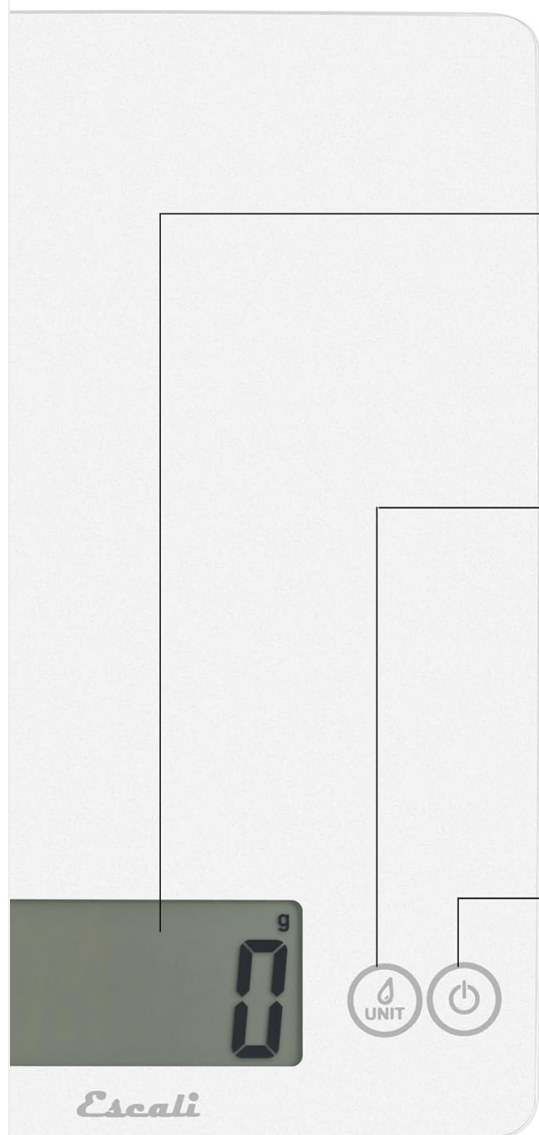
### Display Hold Function

Use the Hold function to view the weight of large items that might obscure the display:

- Place the item on the scale.
- Press the **Hold** button. The weight will be locked on the display.
- You can now remove the item, and the weight will remain visible on the screen.



*Image: A detailed view of the Escali Arti scale, highlighting the 'Tare' and 'Hold' buttons and explaining their functions for precise measurement.*



## EASY TO READ

Large digital display.

## UNIT SELECTION

Measure ounces, pounds & ounces, grams, fluid ounces, milliliters.

## POWER CONTROL

Turn off the scale on and off.

*Image: Another detailed view of the Escali Arti scale, illustrating the 'Unit' and 'Power' buttons and the large, easy-to-read digital display.*





*Image: A close-up of the touch-sensitive 'Unit' and 'Power' buttons, demonstrating the sleek design of the scale's interface.*

### Demonstration Video

*Video: An official demonstration of the Escali 157 Arti Glass Kitchen Scale, showcasing its features and ease of use.*

### SPECIFICATIONS

Feature	Detail
Brand	Escali
Model Number	157
Color	Frost White
Weight Limit	15 Pounds (7,000 Grams)
Readout Accuracy	1 Grams (0.1 Ounces)
Display Type	LED
Material	Glass, Plastic
Product Dimensions	9 x 6.5 x 0.75 inches
Power Source	2 Lithium Metal CR2032 batteries (included)

### MAINTENANCE

## Cleaning

The scale features a single smooth glass surface that is easy to wipe clean. Use a soft, damp cloth to clean the surface. Avoid abrasive cleaners or submerging the scale in water.

## Battery Replacement

When the display indicates low battery or the scale fails to power on, replace the two CR2032 batteries as described in the [Setup](#) section.

## TROUBLESHOOTING

---

If you encounter any issues with your Escali Arti Digital Food Scale, please consider the following:

- **Scale Not Turning On:** Ensure batteries are correctly installed and fully seated. Replace batteries if necessary.
- **Inaccurate Readings:** Ensure the scale is on a flat, stable surface. Avoid placing items that exceed the maximum weight capacity.
- **Display Issues:** If the display is erratic, try removing and reinserting the batteries.

For further assistance, please refer to the [Warranty and Support](#) section.

## WARRANTY AND SUPPORT

---

Your Escali Arti Digital Food Scale comes with a manufacturer's warranty. Please refer to the warranty information included in your product packaging for details on coverage and duration.

For technical support, service, or warranty claims, please contact Escali customer service through their official website or the contact information provided in your product documentation.