

## Elite Q032

# Elite Q032 Limit Switch Adjustment Nuts User Manual

Model: Q032 | Brand: Elite

## 1. INTRODUCTION

The Elite Q032 Limit Switch Adjustment Nuts are essential replacement parts designed for various Elite gate openers. These nuts play a crucial role in the precise operation of your gate system's limit switches, ensuring accurate positioning and reliable performance. This manual provides detailed information on the product, its installation, operation, and maintenance.

This product is supplied as a pair of solid hard plastic nuts, engineered for enhanced durability compared to original designs that featured brass inserts prone to cracking under pressure or constant use.

## 2. PRODUCT OVERVIEW AND COMPATIBILITY

### 2.1 Key Features

- Designed as a direct replacement for Elite gate openers.
- Constructed from solid hard plastic for improved durability and resistance to cracking.
- Supplied as a set of two (pair) for complete replacement.
- Facilitate lateral travel of limit switch components as the internal screw rotates via gear reduction.

### 2.2 Compatible Models

This replacement kit is compatible with the following Elite gate opener models:

- SL3000
- SL3000ULE
- ROBO SLIDE
- Various Commercial Slide Gate Operators

## 3. INSTALLATION (REPLACEMENT)

The Elite Q032 Limit Switch Adjustment Nuts are designed for replacement in existing Elite gate opener systems. Proper installation is crucial for the correct functioning of your gate opener's limit switches. It is recommended that installation be performed by a qualified technician.

### 3.1 Safety Precautions

- Disconnect Power:** Always ensure the gate opener's power supply is completely disconnected before beginning any installation or maintenance work.

- **Refer to Gate Opener Manual:** Consult your specific Elite gate opener's instruction manual for detailed diagrams and procedures related to limit switch access and adjustment.
- **Wear Protective Gear:** Use appropriate personal protective equipment (PPE) such as gloves and eye protection.

### 3.2 Replacement Procedure (General Steps)

1. **Access Limit Switch Assembly:** Locate and carefully open the housing of your Elite gate opener to access the limit switch mechanism. This typically involves removing covers or panels.
2. **Identify Old Nuts:** Identify the existing limit switch adjustment nuts. Note their position and orientation.
3. **Remove Old Nuts:** Carefully remove the old, damaged, or worn-out nuts from the limit switch screw or rod.
4. **Install New Nuts:** Slide the new Elite Q032 adjustment nuts onto the limit switch screw/rod, ensuring they are correctly oriented. The nuts are designed to travel laterally along the screw.
5. **Reassemble and Test:** Once the new nuts are in place, carefully reassemble the gate opener housing. Reconnect power and perform a functional test of the gate opener, ensuring the limit switches are properly engaging and disengaging the motor at the desired open and close positions. Adjust as necessary according to your gate opener's manual.



Figure 1: Close-up view of a single Elite Q032 Limit Switch Adjustment Nut, highlighting its threaded inner bore and external gear teeth.

## 4. OPERATION

---

The Q032 Limit Switch Adjustment Nuts are integral components of the gate opener's limit switch assembly. Their primary function is to define the gate's open and closed positions.

- When the gate opener motor operates, it drives a threaded rod or screw within the limit switch mechanism.
- The Q032 nuts are designed to travel along this threaded rod. As they move, they eventually contact and activate or deactivate the limit switches.
- This activation signals the gate opener's control board to stop the motor, thereby setting the gate's fully open or fully closed position.
- Proper adjustment of these nuts is critical for the safe and efficient operation of the gate, preventing it from over-traveling or not closing completely.



Figure 2: A pair of Elite Q032 Limit Switch Adjustment Nuts, as supplied.

## 5. MAINTENANCE

---

Regular inspection and minor maintenance can extend the lifespan of your limit switch adjustment nuts and ensure consistent gate operation.

- **Visual Inspection:** Periodically inspect the nuts for signs of wear, cracking, or damage. Check if they move freely along the threaded rod.
- **Cleaning:** Keep the area around the limit switch assembly clean and free from dirt, debris, or insect nests that could impede the nuts' movement. Use a soft, dry cloth or brush.
- **Lubrication:** Refer to your gate opener's manual for recommendations on lubricating the limit switch threaded rod. If lubrication is recommended, use a suitable lubricant that will not degrade plastic components.
- **Adjustment Check:** Occasionally verify that the gate stops precisely at its intended open and closed positions. If adjustments are needed, refer to your gate opener's manual.

## 6. TROUBLESHOOTING

---

If your gate opener is exhibiting issues related to its stopping points, the limit switch adjustment nuts may be a contributing factor. Always consult your gate opener's main troubleshooting guide first.

Problem	Possible Cause (related to Q032 nuts)	Solution
Gate over-travels or doesn't stop at desired position.	Nuts are worn, cracked, or have slipped on the threaded rod; limit switch itself is faulty.	Inspect nuts for damage and replace if necessary. Re-adjust nut positions according to gate opener manual. Check limit switch for proper function.
Gate stops prematurely.	Nuts are incorrectly positioned; debris obstructing nut movement.	Clean the limit switch area. Re-adjust nut positions.
Grinding noise from limit switch area.	Damaged or misaligned nuts; foreign object in mechanism.	Inspect nuts for damage and replace. Clear any obstructions.

If issues persist after troubleshooting, contact a certified Elite gate opener technician for assistance.

## 7. SPECIFICATIONS

Attribute	Detail
Model Number	Q032
Brand	Elite
Product Dimensions (L x W x H)	5.51 x 5.12 x 9.84 inches (overall packaging/shipping dimensions)
Item Weight	1.6 ounces
Material	Solid Hard Plastic
Quantity	Pair (2 nuts)
Compatibility	Elite SL3000, SL3000ULE, ROBO SLIDE, and various Commercial Slide Gate Operators



Figure 3: Top view of a single Elite Q032 Limit Switch Adjustment Nut.

## 8. WARRANTY AND SUPPORT

For specific warranty information regarding the Elite Q032 Limit Switch Adjustment Nuts, please refer to the documentation provided with your original Elite gate opener or contact Elite customer support directly. As a replacement part, its warranty may be covered under the original product's terms or as a separate component. For technical support, installation assistance, or to inquire about other Elite replacement parts, please visit the official Elite website or contact their customer service department. Always provide your product model number (Q032) and the model of your gate opener when seeking support.





## Instruction Manual ROBO SLIDE Residential Gate Operator

Installation instructions and manual book for  
architects, general contractors and dealers

Click on the desired topic in the "Bookmarks" column or "Table of Contents" to select page.

Copyright © 2003 by Elite Access Systems, Inc. - www.eliteaccess.com

[\[pdf\]](#) User Manual Owner's Manual Quick Start Guide Installation Guide Instructions Troubleshooting Guide Parts List Specifications

02 ai Robert M Verrilli Instruction Manual ROBO SLIDE aegates READ ENTIRE OWNERS MANUAL BEFORE INSTALLATION CAUTION Model Warnings and Precautions DO NOT Use for Apartment or Condominium Applications 1 Do not tighten chain too tight 2 proper type of wheels only 4 steel with high speed ball bearings 3 use a 12V transformer 18 VAC 0 Amp install as rear Residential Gate Operator Installation instructions manual book architects general contractors dealers Click on the desired topic in Bookmarks column Table elite gate operators robo slide manuals

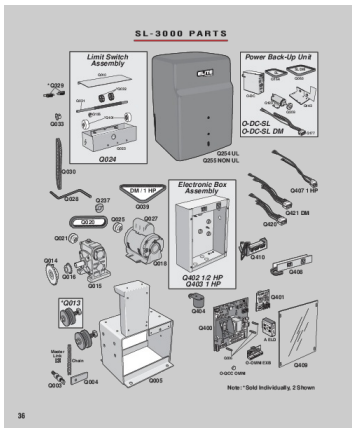
ACCESS SYSTEMS INC eliteaccess.com Instruction Manual ROBO SLIDE Residential Gate Operator Installa ... Master Link Q003 - Chain Bolt Q004 - Chain Bracket Q006 - PC Board Nuts 1 Set Q029 - Limit Switch **Q032** - Limit Switch Adjustment Nut Q101 - Limit Switch Bearing Holder Q123 - Motor - DC - 12V Q124 ... lang:en score:34 filesize: 2.39 M page\_count: 23 document date: 2003-04-22

[\[pdf\]](#) User Manual Installation Guide Instructions

Elite SL 3000 UL Series Gate Opener Instruction Manual Access Systems Inc Installation Instructions Regarding the Operator A Install gate operator only when 1 The is appropriate for construction and usage Class of 2 All openings a horizontal slide are guarded or screened from bottom to minimum 4 feet m above ground Make sure power off 6 KEEP GATES PROPERLY MAINTAINED Read manual Have qualified service person make repairs gate Belt Q021 Gear Pulley Q025 Motor Q027 Capacitor Q028 Crank hardware 7 entrance vehicles Pedestrians must use separate 8 SAVE THESE INSTRUCTIONS Gates SL3000ULDC3 Manual1 amazinggates v assets Manuals files d tools Visualizations Approved Documents

Installation Instructions Regarding the Gate Operator A Install the gate operator only when: 1 Th ... Decrease the sensitivity of the loop detector SL-3000 PARTS Limit Switch Assembly Q010 \*Q029 \***Q032** Q031 Q033 Q051 \*Q101 Q023 Q024 Q254 Power Back-Up O-DC Q123 SL Q164 SL DM Q065 Q209 ...

lang:en score:32 filesize: 2.6 M page\_count: 31 document date: 2005-05-19



[\[pdf\]](#) User Manual Parts List

sl3000parts affordableopeners manuals gate operators elite Elite3000 MANUAL

SL-3000 PARTS \*Q329 Q033 Limit Switch Assembly Q010 Q031 \***Q032** Q156 \*Q101 Q030 Q023 Q024 Q028 Q237 DM / 1 HP Q039 Q020 Q025 Q027 Q021 Power Back-Up Unit SL Q164 SL DM Q065 O-DC Q123 Q209 Q143 O-DC-SL O-DC-SL DM Q177 Q254 UL Q255 NON UL Electronic Box Assembly Q407 1 HP Q4... lang:en score:31 filesize: 505.42 K page\_count: 2 document date: 2011-09-22



[pdf] User Manual Quick Start Guide Troubleshooting Guide Specifications

Robo Slide Surge Manual roboslidemanual hooverfence 80 elite roboslide

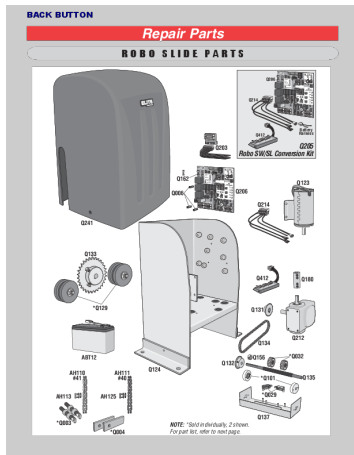
TABLE OF CONTENTS Role of Specifiers..., Role of Dealers.... Role of End

Users/Home Owners, Horizo ... Q180 \*Q129 Q131 A BT 12 A H-110 #41 A H-111 #40

A H-113 A H-125 Q124 Q132 Q134 Q156 Q212 \***Q032** \*Q101 \*Q029 Q135 \*Q003

\*Q004 Q137 Note: \*Sold Individually, 2 Shown. For part list, refer ...

lang:en score:26 filesize: 4.63 M page\_count: 42 document date: 2003-10-08



[pdf]

Repair Parts Affordable Openers Q032 Limit Switch Adjustment Nut Q101 Bearing Holder Q123 Motor DC

12V Robo SW SL Conversion Kit Q205 Q211 Harness parts srsltid AfrmBOorZRwSB0vTwtkrpkH88M

GCrllrl8bCHHyB7GQ3bOos Umnkrsk affordableopeners manuals gate operators elite roboslide |||

BACK BUTTON Q241 Repair Parts ROBO SLIDE PARTS Q214 Q206 CHECK

CHARGINGFUSE POWER BOARD POWER ... R Q131 Q180 ABT12 AH110 #41

AH111 #40 AH113 AH125 \*Q003 \*Q004 Q124 Q132 Q134 Q156 Q212 \***Q032** \*Q101

\*Q029 Q135 NOTE: \*Sold individually, 2 shown. For part list, refer to next page.

Q137...

lang:en score:25 filesize: 612.82 K page\_count: 2 document date: 2011-09-23



[pdf] Specifications Guide Accessories

PRODUCT GUIDE FSW Product Guide 2025 Digital fsw uk 07 |||

REFRIGERATION AIR CONDITIONING PRODUCT GUIDE Disclaimer Whilst every

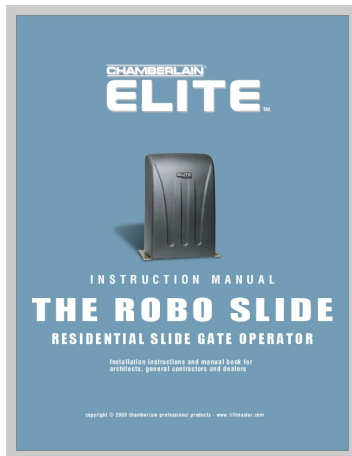
effort has been made to ens ... the connection. Available individually or in a multi-

pack. CODE Q025 Q026 Q027 Q028 Q029 Q030 Q031 **Q032** Q033 MODEL 93S 03

93S 04 93S 05 93S 06 93S 08 93S 10 93S 12 93S 14 Proex CH-193 TO SUIT TUBE

...

lang:en score:22 filesize: 48.51 M page\_count: 378 document date: 2025-07-22



[\[pdf\]](#) User Manual Quick Start Guide Instructions Specifications

01 50528 The Chamberlain Group Inc I N S T R U C O M A L THE ROBO SLIDE 2 SPECIFICATIONS AND WARNINGS Recommended Gate Setup Configuration Speed 11 inch per second Maximum Length 20 feet Weight 800 pounds Cycles 70 cycles day with Elite s Plug In Transformer Solar power varies Contact for more Information Battery back up 50 total manual affordableopeners manuals gate operators elite roboslide |||

INSTRUCTION MANUAL THE ROBO SLIDE RESIDENTIAL SLIDE GATE OPERATOR Installation instructions and man ... R Q131 Q180 ABT12 AH110 #41 AH111 #40 AH113 AH125 \*Q003 \*Q004 Q124 Q132 Q134 Q156 Q212 \***Q032** \*Q101 \*Q029 Q135 NOTE: \*Sold individually, 2 shown. For part list, refer to next page. 38 Q...

lang:en score:20 filesize: 6.68 M page\_count: 43 document date: 2008-11-24

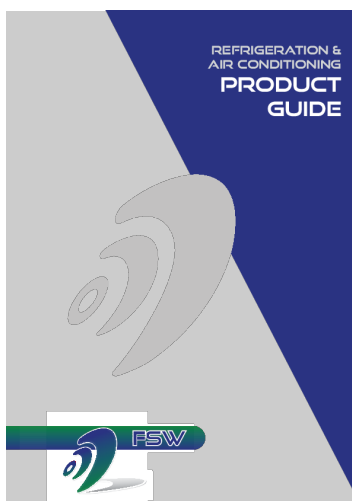


[\[pdf\]](#) User Manual

SL Surge qxd Station One SLSurge manual slsurge manual gatehousesupplies 80 manuals v vspfiles v4 backup

Click on the desired topic in the Bookmarks column or Table of Contents to select page. V 1102 ... chnical support: 1-888-ELITE-10 35 SL-3000 PARTS \*Q329 Q033 Limit Switch Assembly Q010 Q031 \***Q032** Q156 \*Q101 Q030 Q023 Q024 Q028 Q237 DM / 1 HP Q039 Q020 Q025 Q027 Q021 Power Back-Up...

lang:en score:20 filesize: 8.08 M page\_count: 39 document date: 2003-04-23



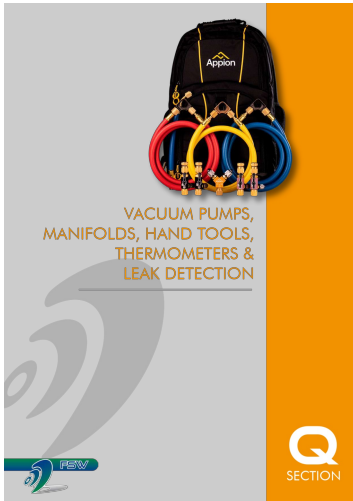
[\[pdf\]](#) Specifications Guide

fsw product guide web 3 uk sites files |||

REfrigeration air conditioning Product guide Disclaimer Whilst every effort has been made to ens ... the connection. Available individually or in a multi-pack. CODE Q025 Q026 Q027 Q028 Q029 Q030 Q031 **Q032** Q033 MODEL 93S 03 93S 04 93S 05 93S 06 93S 08 93S 10 93S 12 93S 14 Proex CH-193 TO SUIT TUBE ...

lang:en score:18 filesize: 58.01 M page\_count: 355 document date: 2021-09-14



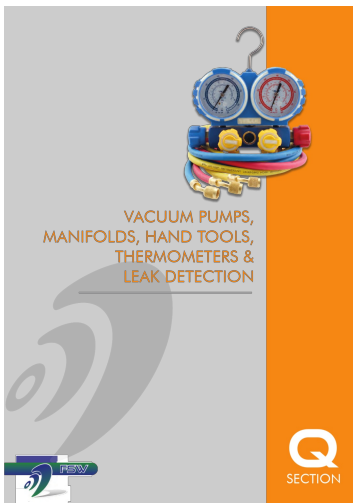


[\[pdf\]](#) Guide

VACUUM PUMPS MANIFOLDS HAND TOOLS THERMOMETERS LEAK DETECTION FSW Product Guide 2025 Digital Section Q fsw uk 2021 09 |||

VACUUM PUMPS, MANIFOLDS, HAND TOOLS, THERMOMETERS LEAK DETECTION Q SECTION Q SECTION VALUE Mani ... the connection. Available individually or in a multi-pack. CODE Q025 Q026 Q027 Q028 Q029 Q030 Q031 **Q032** Q033 MODEL 93S 03 93S 04 93S 05 93S 06 93S 08 93S 10 93S 12 93S 14 Proex CH-193 TO SUIT TUBE ...

lang:en score:18 filesize: 8.37 M page\_count: 72 document date: 2025-07-21

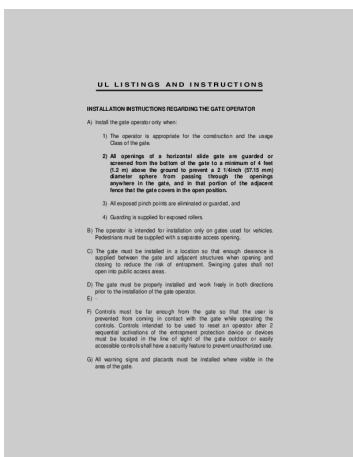


[\[pdf\]](#) Guide

VACUUM PUMPS MANIFOLDS HAND TOOLS FSW Testo 557s Smart Vacuum Kit with Hoses Digital manifold 2 x Wireless Temp Probes testo 805i Infrared Thermometer Probe 0560 1805 fsw master product guide section q 1 uk sites files |||

VACUUM PUMPS, MANIFOLDS, HAND TOOLS, THERMOMETERS LEAK DETECTION Q SECTION Q SECTION VALUE Mani ... the connection. Available individually or in a multi-pack. CODE Q025 Q026 Q027 Q028 Q029 Q030 Q031 **Q032** Q033 MODEL 93S 03 93S 04 93S 05 93S 06 93S 08 93S 10 93S 12 93S 14 Proex CH-193 TO SUIT TUBE ...

lang:en score:15 filesize: 8.56 M page\_count: 60 document date: 2021-09-20



[\[pdf\]](#) Installation Guide Instructions

Chipper elitesl3000man lib store yahoo net 80 aaaremotest

UL LISTINGS AND INSTRUCTIONS INSTALLATION INSTRUCTIONS REGARDING THE GATE OPERATOR A Install the ga ... oop detector SL-3000 PARTS Q008 Q114 Q010 Q033 Q030 Q028 Q026 Q027 Q021 Q025 Q020 Q031 **Q032** Q029 Q101 Q014 Q016 Q015 Q018 Q023 Q022 Q017 Q009 A H-110 Q003 Q013 Q004 Q005 Q006 ...

lang:en score:12 filesize: 902.89 K page\_count: 30 document date: 2001-02-06