

Logitech M185

Logitech M185 Wireless Mouse User Manual

Model: M185 | Brand: Logitech

INTRODUCTION

The Logitech M185 Wireless Mouse is a simple, reliable, and compact peripheral designed for comfortable and efficient navigation. Featuring plug-and-play wireless connectivity, a long-lasting battery, and precise optical tracking, it is an ideal choice for everyday computing tasks. This manual provides comprehensive instructions for setting up, operating, maintaining, and troubleshooting your M185 mouse.



Image: The Logitech M185 Wireless Mouse in Swift Gray, shown alongside its compact USB mini receiver.

PACKAGE CONTENTS

Your Logitech M185 Wireless Mouse package should contain the following items:

- Logitech M185 Wireless Mouse
- USB Mini Receiver
- 1 AA Battery (pre-installed or included)
- User Documentation (this manual)



Image: Contents of the Logitech M185 retail package, including the mouse, USB receiver, and an AA battery.

SETUP GUIDE

Follow these steps to quickly set up your Logitech M185 Wireless Mouse:

1. **Insert Battery:** If not already installed, open the battery compartment on the underside of the mouse and insert the provided AA battery, ensuring correct polarity.
2. **Power On:** Locate the On/Off switch on the bottom of the mouse and slide it to the "ON" position.
3. **Connect USB Receiver:** Plug the tiny USB mini receiver into an available USB port on your computer (PC

or Mac).

4. **Automatic Connection:** Your computer should automatically detect the mouse and establish a connection. No additional software or drivers are typically required for basic functionality.

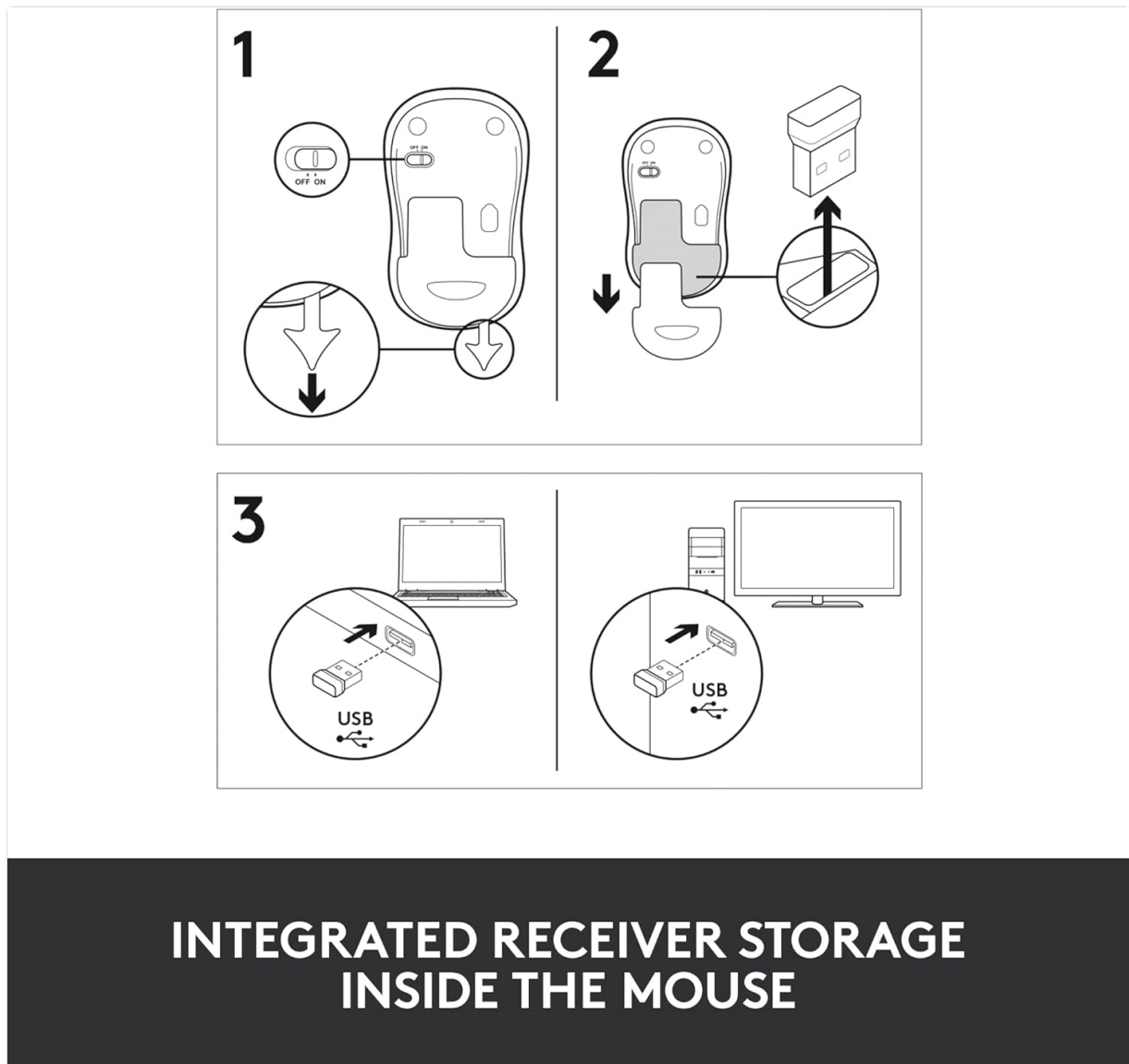


Image: Visual guide for turning on the mouse, storing the USB receiver inside the mouse, and connecting the receiver to a laptop or desktop computer.

The USB mini receiver can be conveniently stored inside the mouse when not in use, making it easy to transport.

OPERATING YOUR MOUSE

The Logitech M185 is designed for intuitive use with standard mouse functions.

- **Left Click:** Primary button for selecting items, opening files, and activating functions.
- **Right Click:** Secondary button for accessing context menus and additional options.
- **Scroll Wheel:** Roll up or down to scroll through documents and web pages. The scroll wheel also functions as a middle click button.

Key Features:

- **Ambidextrous Design:** The contoured shape is comfortable for both right-handed and left-handed users.
- **Plug-and-Play Wireless:** Enjoy a strong, reliable connection up to 10 meters (33 feet) without delays or

dropouts.

- **Optical Tracking:** 1000 DPI optical tracking provides smooth and precise cursor control on various surfaces.
- **Smart Sleep Mode:** Helps conserve battery life, extending it up to 12 months.



**BROAD
COMPATIBILITY**



Image: A detailed diagram illustrating the key features of the M185 mouse, including its sculpted keyplate, ambidextrous design, 12-month battery life, 10m wireless range, smooth tracking, and integrated receiver storage.



COMPACT AND COMFORTABLE

Image: A hand comfortably gripping the Logitech M185 mouse, showcasing its compact and ergonomic design suitable for extended use.

MAINTENANCE

Battery Replacement

The Logitech M185 mouse is powered by one AA battery, offering up to 12 months of battery life depending on usage. When the mouse performance degrades or it stops responding, it's likely time to replace the battery.

1. Turn the mouse OFF using the switch on the bottom.
2. Open the battery compartment cover on the underside of the mouse.
3. Remove the old AA battery.
4. Insert a new AA battery, ensuring the positive (+) and negative (-) terminals align correctly with the markings inside the compartment.
5. Close the battery compartment cover securely.
6. Turn the mouse ON.

Cleaning

To ensure optimal performance and hygiene, clean your mouse periodically:

- Use a soft, lint-free cloth lightly dampened with water or an electronics-safe cleaning solution.
- Wipe down the exterior of the mouse.
- For the optical sensor, use a dry cotton swab to gently remove any dust or debris. Avoid using liquids directly on the sensor.
- Do not submerge the mouse in water or use harsh chemicals.

TROUBLESHOOTING

If you encounter issues with your Logitech M185 Wireless Mouse, try the following solutions:

Problem	Solution
Mouse not responding	Ensure the mouse is turned ON. Check the battery level and replace if necessary. Ensure the USB receiver is securely plugged into a working USB port. Try a different USB port. Move the mouse closer to the USB receiver. Restart your computer.
Erratic cursor movement	Clean the optical sensor on the bottom of the mouse. Ensure you are using the mouse on a suitable surface. Avoid highly reflective or transparent surfaces. Remove any metallic objects between the mouse and the receiver that might interfere with the wireless signal.
Connection drops frequently	Reduce the distance between the mouse and the USB receiver. Ensure there are no other wireless devices operating on the same frequency (2.4GHz) nearby that could cause interference. Try plugging the USB receiver into a different USB port, preferably one that is not next to other USB devices.

SPECIFICATIONS

Feature	Detail
Model Number	910-002225
Connectivity	2.4 GHz Wireless (USB Receiver)
Tracking Technology	Optical
DPI (Dots Per Inch)	1000 DPI
Battery Type	1 x AA Battery
Battery Life	Up to 12 months (may vary based on usage)
Wireless Range	Up to 10 meters (33 feet)
Dimensions (LxWxH)	1.54 x 3.89 x 2.36 inches (39 x 99 x 60 mm)
Weight	1.06 ounces (50 g)

Feature	Detail
Compatibility	Windows Vista, 7, 8, 10; Mac OS X 10.5 or later; Chrome OS; Linux kernel 2.6+



Image: Technical drawing illustrating the dimensions (length, width, height) and weight of the Logitech M185 Wireless Mouse.

WARRANTY AND SUPPORT

Warranty Information

The Logitech M185 Wireless Mouse typically comes with a 3-year limited hardware warranty. Please refer to the warranty card included with your product or visit the official Logitech website for detailed terms and conditions.

Customer Support

For further assistance, technical support, or to download the latest drivers and software, please visit the official Logitech support website. You can also find additional resources, FAQs, and community forums there.

A digital version of the user guide is available for download: [Logitech M185 User Guide \(PDF\)](#)

LEGAL DISCLAIMER

Return policy: All purchases are returnable if UNOPENED within 14 days. Shipping costs are not refundable. Upon returning merchandise, you will incur the full shipping amount even if you originally had free shipping or paid a promotional shipping price. A minimum 15% restocking fee will be applied to any OPENED merchandise that is not defective. All opened merchandise must be returned in the original manufacturer's box with the UPC intact and the product serial number must match the serial number on the manufacturer box and the one we provide by email or Amazon message at the moment we ship it to you.