

## Velleman VTLAN3

# Velleman VTLAN3 LAN Tester User Manual

For RJ45, RJ11, and BNC Network Cables

## 1. INTRODUCTION

This manual provides detailed instructions for the proper use and maintenance of the Velleman VTLAN3 LAN Tester. This device is designed to test the continuity and wiring configuration of various network cables, including RJ45, RJ11, and BNC coaxial cables. Please read this manual thoroughly before operating the device to ensure safe and effective use.

## 2. SAFETY INFORMATION

- **DO NOT** use this device on live circuits. Ensure all cables are disconnected from active network equipment and power sources before testing.
- Keep the device dry. Avoid exposure to moisture or liquids.
- Do not attempt to open or modify the device. Refer all servicing to qualified personnel.
- Dispose of batteries responsibly according to local regulations.

## 3. PRODUCT OVERVIEW

The Velleman VTLAN3 LAN Tester consists of a main unit and a remote terminator unit. It features LED indicators for pin-out status and a switch for selecting test modes.



Image 1: Velleman VTLAN3 LAN Tester components. Shown are the main testing unit (left), the remote terminator unit (right), and a BNC adapter with an RJ45 patch cable. The main unit features LED indicators for pins 1 through 8 and ground, along with a mode switch. The remote terminator unit also has corresponding LED indicators.

### 3.1 Main Unit Features

- **PIN-OUT INDICATOR LEDs (1-8, G):** Display the status of each wire in the cable. 'G' indicates ground.
- **Mode Switch:**
  - **OFF:** Powers off the device.
  - **ON:** Powers on the device for testing.
  - **AUTO:** Automatically cycles through pin tests.

- **MANUAL:** Allows manual step-through of pin tests.
- **RJ45/RJ11 Ports:** For connecting Ethernet and telephone cables.
- **BNC Port:** For connecting coaxial cables.

### 3.2 Remote Terminator Unit Features

- **PIN-OUT INDICATOR LEDs (1-8, G):** Mirror the main unit's indicators to confirm continuity and wiring.
- **RJ45/RJ11 Port:** For connecting the other end of the cable being tested.
- **BNC Port:** For connecting the other end of a coaxial cable.

## 4. SETUP

---

### 4.1 Battery Installation

The VTLAN3 LAN Tester requires a 9V battery (not included). To install:

1. Locate the battery compartment cover on the back of the main unit.
2. Slide or unclip the cover to open.
3. Connect a 9V battery to the battery clip, observing correct polarity.
4. Place the battery into the compartment and close the cover securely.

### 4.2 Connecting Cables for Testing

Before connecting any cable, ensure it is disconnected from all active devices and power sources.

- **For RJ45/RJ11 Cables:** Connect one end of the cable to the RJ45/RJ11 port on the main unit and the other end to the corresponding port on the remote terminator unit.
- **For BNC Coaxial Cables:** Connect one end of the BNC cable to the BNC port on the main unit and the other end to the BNC port on the remote terminator unit.

## 5. OPERATING INSTRUCTIONS

---

Once the cable is connected and the battery is installed, you can begin testing.

### 5.1 Powering On and Mode Selection

1. Slide the mode switch on the main unit to the **ON** position.
2. Select your desired test mode:
  - **AUTO:** The tester will automatically cycle through each pin, illuminating the corresponding LEDs on both the main and remote units. This is suitable for quick checks.
  - **MANUAL:** The tester will illuminate one pin at a time. Press the "TEST" button (if available, or cycle through by switching to AUTO and back to MANUAL) to advance to the next pin. This mode is useful for detailed inspection of specific pins.

### 5.2 Interpreting LED Indicators

The LEDs on both the main unit and the remote terminator unit will illuminate to indicate the status of each wire. A properly wired and continuous cable will show corresponding LEDs lighting up simultaneously on both units for each pin (1-8, G).

- **Correct Wiring/Continuity:** The LED for a specific pin on the main unit and the remote unit will light up

at the same time.

- **Open Circuit (Broken Wire):** An LED on the main unit lights up, but the corresponding LED on the remote unit does not.
- **Short Circuit:** Multiple LEDs light up simultaneously on one or both units when only one should be active, or an incorrect sequence is observed.
- **Crossed Wires:** LEDs light up, but in an incorrect sequence between the main and remote units (e.g., main unit pin 1 lights up, but remote unit pin 2 lights up).

The VTLAN3 supports testing for common wiring standards such as 10BASE-T, TOKEN RING, AT&T 258A, and EIA/TIA 568.

## 6. MAINTENANCE

### 6.1 Cleaning

Wipe the device with a soft, dry cloth. Do not use abrasive cleaners or solvents.

### 6.2 Battery Replacement

If the LEDs become dim or the device does not power on, replace the 9V battery as described in Section 4.1.

### 6.3 Storage

Store the device in a cool, dry place away from direct sunlight and extreme temperatures. If storing for extended periods, remove the battery to prevent leakage.

## 7. TROUBLESHOOTING

Problem	Possible Cause	Solution
Device does not power on.	Dead or improperly installed battery.	Replace the 9V battery, ensuring correct polarity.
LEDs are dim or flicker.	Low battery power.	Replace the 9V battery.
No LEDs light up on the remote unit.	Open circuit in the cable, or remote unit not connected properly.	Check cable connections. Inspect the cable for breaks.
Incorrect LED sequence or multiple LEDs light up.	Short circuit, crossed wires, or split pairs in the cable.	Re-terminate the cable ends or replace the cable.
Device not responding.	Internal fault.	Contact Velleman support for assistance.

## 8. SPECIFICATIONS

Feature	Detail
Model Number	VTLAN3
Supported Cable Types	RJ45 (8-pin), RJ11 (4-pin), BNC Coaxial




Feature	Detail
Test Modes	Auto Scan, Manual Step
Indicators	LEDs for pins 1-8 and Ground (G)
Power Source	9V battery (not included)
Dimensions (Main Unit)	Approximately 10.5 x 6.5 x 2.5 cm (estimated from image and parcel dimensions)
Weight	Approximately 204.12 g (total parcel weight)
Manufacturer	Velleman
UPC	836479006652




## 9. WARRANTY AND SUPPORT

Velleman products are designed for reliability and performance. For specific warranty information, please refer to the warranty card included with your purchase or visit the official Velleman website. If you encounter any issues or require technical assistance, please contact Velleman customer support through their official channels.

Please have your model number (VTLAN3) and purchase details ready when contacting support.

### Related Documents - VTLAN3

 <p>VTTEST23</p> <p>Velleman</p> <p>USER MANUAL HANDLE WITH CARE DO NOT TOUCH RESISTANCE TO POLARITY RESISTANCE TO POLARITY RESISTANCE TO POLARITY RESISTANCE TO POLARITY</p> <p>CE</p>	<p><a href="#">Velleman VTTEST23 Socket Tester User Manual</a></p> <p>User manual for the Velleman VTTEST23 socket tester. Learn how to use this essential tool for electricians and homeowners to ensure electrical safety, detect wiring faults, and check polarity in outlets.</p>
 <p>K5201</p>	<p><a href="#">Velleman K5201 Light Computer - Illustrated Assembly Manual</a></p> <p>Detailed illustrated assembly manual for the Velleman K5201 Light Computer kit. Learn how to build and use this electronic project featuring 16 patterns and 7 outputs for creating unique light shows.</p>
 <p>PROBE150</p>	<p><a href="#">Velleman PROBE150 Oscilloscope Probe User Manual</a></p> <p>Comprehensive user manual for the Velleman PROBE150 oscilloscope probe, detailing specifications, safety instructions, and maintenance for accurate signal measurement.</p>

	<p><a href="#">Velleman K5201 Light Computer Illustrated Assembly Manual</a></p> <p>Detailed illustrated assembly manual for the Velleman K5201 Light Computer kit, including features, specifications, component lists, assembly instructions, hook-up diagrams, and safety information.</p>
	<p><a href="#">Velleman K4102 Guitar Preamplifier with Headphone Output Assembly Manual</a></p> <p>Assembly instructions, specifications, and schematic for the Velleman K4102 Guitar Preamplifier with Headphone Output DIY kit. Learn how to build and use this device for practicing guitar without disturbing others.</p>
	<p><a href="#">Velleman K4006 Power Supply Assembly Manual</a></p> <p>Illustrated assembly manual for the Velleman K4006 power supply, compatible with K4004B and K4005B models. Includes tools, assembly hints, construction steps, connection diagrams, and PCB layout.</p>

Documents - Velleman – VTLAN3



### VTLAN3

LAN TESTER FOR RJ45, RJ12, RJ11, RJ10 & BNC  
LAN-TESTER VOOR RJ45, RJ12, RJ11, RJ10 & BNC  
TESTEUR LAN POUR RJ45, RJ12, RJ11, RJ10 & BNC  
COMPROBADOR DE CABLE LAN PARA RJ45, RJ12, RJ11, RJ10 & BNC  
LAN-KABELTESTER FÜR RJ45, RJ12, RJ11, RJ10 & BNC



USER MANUAL  
GEBRUIKSHANDLEIDING  
NOTICE D'EMPLOI  
MANUAL DEL USUARIO  
BEDIENUNGSANLEITUNG

[\[pdf\]](#) User Manual Installation Guide

Vtlan3 GB NL FR ES D mco User manualVelleman VTLAN3 LAN TESTER FOR RJ45 8P8C RJ12 6P6C RJ11 6P2C RJ10 4P4C BNC à Velleman Wholesaler and developer of electronicsvtlan3gbnlfresdcn velleman eu 1 vtlan3gbnlfresd |||

LAN TESTER FOR RJ45, RJ12, RJ11, RJ10 BNC LAN-TESTER VOOR RJ45, RJ12, RJ11, RJ10 BNC TESTEUR LAN ... 10 BNC USER MANUAL

GEBRUIKSHANDLEIDING NOTICE D'EMPLOI MANUAL DEL USUARIO BEDIENUNGSANLEITUNG **VTLAN3** 2 VELLEMAN **VTLAN3** LAN TESTER FOR RJ45, RJ12, RJ11, RJ10 BNC 1. Introduction Features...

lang:en score:38 filesize: 350.85 K page\_count: 12 document date: 2022-07-02



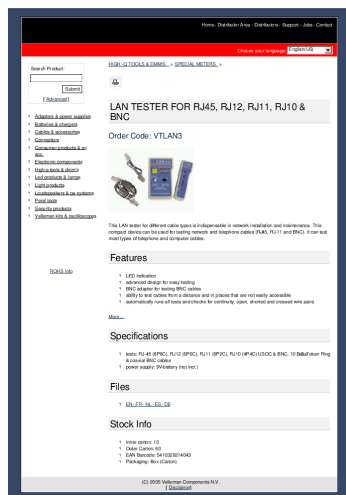
## [pdf] User Manual Installation Guide

Vtlan3 GB NL FR ES D mco LAN TESTER FOR RJ45 RJ12 RJ11 RJ10 BNC VOOR VTLAN3 5

VELLEMAN 1 Inleiding en kenmerken Aan alle ingezetenen van de Europese Unie Belangrijke milieu informatie betreffende dit product 2 manual test button advances step by during mode 3 auto switch 4 socket receive send indicator graph 6 7 power 8 battery box backside of the unit 9 10 LEDs 11 shield earth LED GND Operation vtlan3gbnlfresd velleman eu

**VTLAN3** LAN TESTER FOR RJ45, RJ12, RJ11, RJ10 BNC LAN-TESTER VOOR RJ45, RJ12, RJ11, RJ10 BNC TESTEUR LAN POUR RJ45, RJ12, RJ11, RJ10 BNC COMPROBADOR DE CABLE LAN PARA RJ45, RJ12, RJ11, RJ10 BNC LAN-KABELTESTER FR RJ45, RJ12, RJ11, RJ10 BNC USER MANUAL GEBRUIKERSHANDLEIDING NOTICE D'EMPLOI M...

lang:en **score:38** filesize: 343.2 K page\_count: 12 document date: 2007-01-08

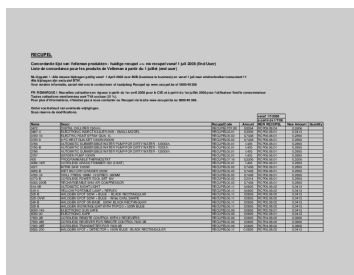


## [pdf] Specifications Datasheet Accessories

LAN TESTER FOR RJ45 RJ12 RJ11 RJ10 BNC Octopart This compact device can be used for testing network and telephone cables RJ 45 11 It test most types of computer Velleman VTLAN3 datasheet octopart 37236546 |||

Home- Distributor Area - Distributors - Support - Jobs - Contact Search Product: HIGH - Q TOOLS ... y products Velleman kits oscilloscopes LAN TESTER FOR RJ45, RJ12, RJ11, RJ10 BNC Order Code: **VTLAN3** This LAN tester for different cable types is indispensable in network installation and mainte...

lang:en **score:30** filesize: 30.01 K page\_count: 1 document date: 2009-07-07



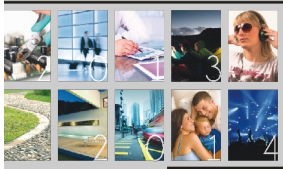
## [pdf]

Concordantie lijst RECUEPEL Velleman prod 2008 07 01 xls vvb velleman eu images spotlights digimagazines

RECUEPEL Corcordantie lijst van Velleman produkten - huidige recupel - nw recupel vanaf 1 juli 200 ... BAL4 VTBAL5 VTBAL6 VTBAL7 VTDESOL3 VTHD01 VTHD02 VTHD03 VTHD04 VTHD05 VTHD06 VTHD07 VTLAMPLC VTLAN2 **VTLAN3** VTLAN4 VTMVS2 VTRCS VTS06 VTS09 VTS15 VTS25LF VTS25N VTS25NCH VTS30 VTS60 VTSC30N VTSET23 PO...

lang:fr **score:12** filesize: 120.56 K page\_count: 37 document date: 0000-00-00

# Catalogus



velleman®

Velleman.eu

[\[pdf\]](#) Accessories Catalog

cc1310nl ebook velleman eu files spotlights digimagazines |||

Catalogus 20 13 20 14 Velleman.eu NETWORKING ALARM SYSTEM IP CAMERA  
USB ACCESSORIES POWER ... LAMP2WN3 VTLAMP2WN8 VTLAMP3WN  
VTLAMP5W VTLAMP6 VTLAMP7 VTLAMP8 VTLAMP9 VTLAMPST VTLAMPST1  
VTLAMPST2 **VTLAN3** VTLAN5 VTLD100 VTLLAMP1W VTLLAMP2W VTLLAMP3W  
VTM4 VTM468 VTM468HP VTM468L VTM468P VTM4L VTM6 ...

lang:nl **score:10** filesize: 88.52 M page\_count: 340 document date: 2013-10-02