

KRUPS 3370-70

KRUPS La Glaciere 1-Quart Automatic Ice Cream Maker User Manual

Model: 3370-70

INTRODUCTION

This manual provides instructions for the safe and efficient operation of your KRUPS La Glaciere 1-Quart Automatic Ice Cream Maker. Please read all instructions carefully before first use and retain for future reference.

IMPORTANT SAFEGUARDS

When using electrical appliances, basic safety precautions should always be followed, including:

- Read all instructions.
- Do not immerse the motor base in water or other liquids.
- Close supervision is necessary when any appliance is used by or near children.
- Unplug from outlet when not in use, before putting on or taking off parts, and before cleaning.
- Avoid contact with moving parts.
- Do not operate any appliance with a damaged cord or plug, or after the appliance malfunctions or has been dropped or damaged in any manner.
- The use of attachments not recommended or sold by the manufacturer may cause fire, electric shock, or injury.
- Do not use outdoors.
- Do not let cord hang over edge of table or counter, or touch hot surfaces.
- Do not place on or near a hot gas or electric burner, or in a heated oven.
- Do not use appliance for other than intended household use.
- Hand wash all parts except the motor base.

PRODUCT OVERVIEW AND PARTS

The KRUPS La Glaciere 1-Quart Automatic Ice Cream Maker is designed for ease of use, featuring a double-insulated freezing bowl and an automatic paddle for consistent results.



Image: The KRUPS La Glacière 1-Quart Automatic Ice Cream Maker, fully assembled. It features a white base with a control knob, a clear lid, and a silver-colored band.

Components:

1. **Motor Base:** Contains the motor and control switch.

2. **Freezing Bowl:** Double-insulated bowl that must be pre-frozen.
3. **Mixing Paddle (Dasher):** Rotates to churn ingredients.
4. **Transparent Lid with Feeder Cap:** Allows observation and addition of ingredients during operation.

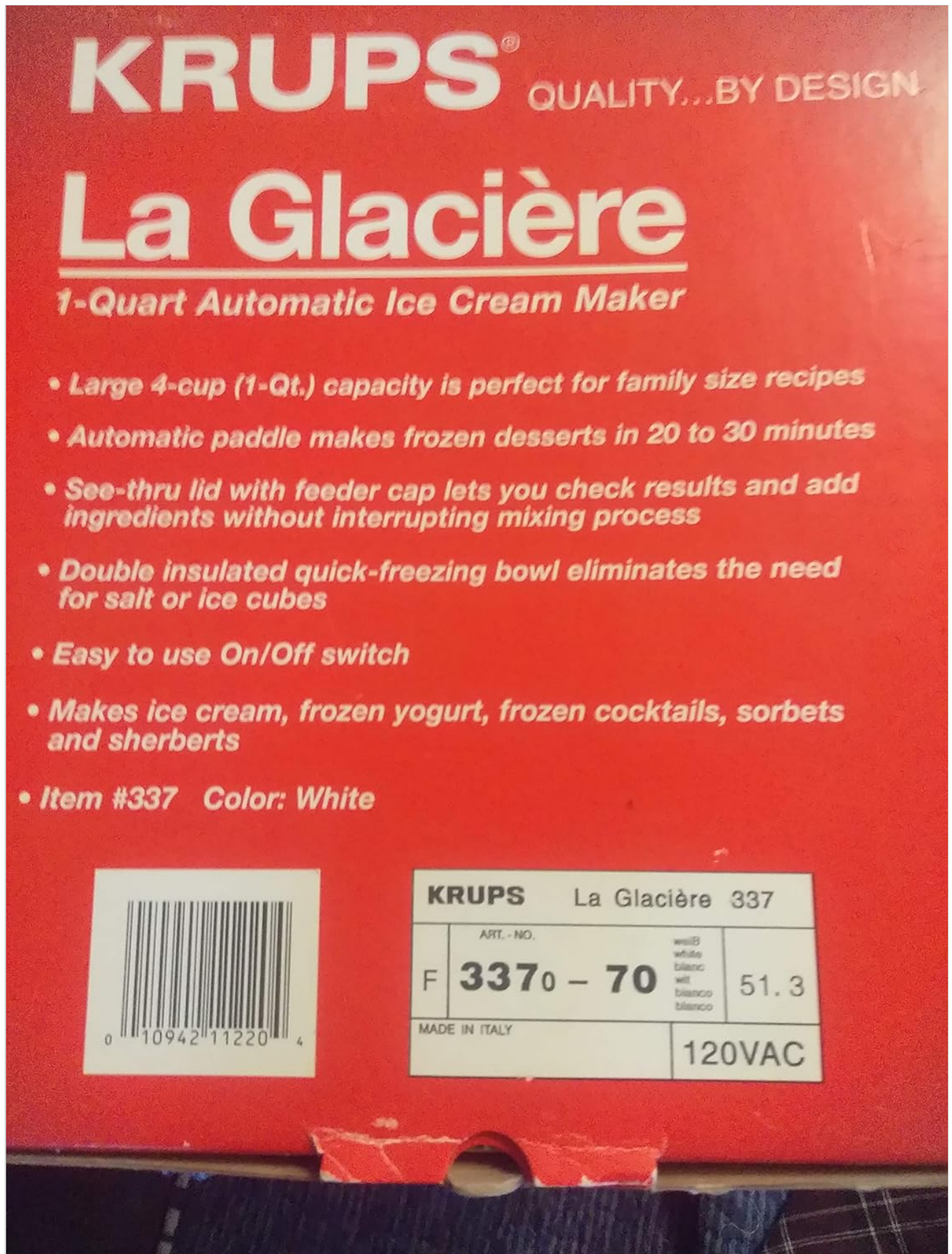


Image: Packaging highlighting key features: 1-quart capacity, automatic paddle, see-thru lid, double-insulated bowl, and easy On/Off switch.

SETUP

1. **Prepare the Freezing Bowl:** Place the freezing bowl in the freezer for at least 12-24 hours, or until completely frozen. The colder the bowl, the better the results. Ensure your freezer is set to 0°F (-18°C) or colder.
2. **Prepare Ingredients:** Prepare your ice cream, frozen yogurt, or sorbet mixture according to your recipe. Chill the mixture thoroughly in the refrigerator for at least 2-3 hours, or overnight, before churning.
3. **Assemble the Unit:**
 - Place the motor base on a clean, dry, and stable surface.
 - Insert the frozen freezing bowl into the motor base.
 - Place the mixing paddle into the freezing bowl, ensuring it sits correctly at the bottom.
 - Place the transparent lid onto the freezing bowl, aligning it properly and twisting to secure if necessary.
4. **Connect Power:** Plug the appliance into a standard electrical outlet (120VAC).

OPERATING INSTRUCTIONS

1. **Start Churning:** Turn the appliance ON using the On/Off switch. The mixing paddle will begin to rotate.
2. **Add Mixture:** Immediately pour your chilled ice cream mixture through the feeder cap opening in the lid.
3. **Churning Process:** Allow the machine to churn for approximately 20-30 minutes. The exact time may vary depending on the recipe and desired consistency. The mixture will thicken as it churns.
4. **Check Consistency:** You can observe the consistency through the transparent lid. For a firmer consistency, transfer the finished dessert to an airtight container and place it in the freezer for an additional 2-4 hours.
5. **Turn Off:** Once the desired consistency is reached, turn the appliance OFF and unplug it from the outlet.
6. **Serve:** Remove the lid and mixing paddle. Use a plastic or wooden utensil to scoop out the ice cream to avoid scratching the freezing bowl.

KRUPS[®] QUALITY...BY DESIGN



Low-Fat Sorbet

For a lighter treat, Krups La Glacière turns your fruit juices into tasty sorbets.



Convenient Automatic Paddle

The paddle automatically churns ingredients, so no manual operation is required.

On/Off Switch
La Glacière does all the work for you. Just turn the machine on and you'll have delicious desserts in minutes.



KRUPS



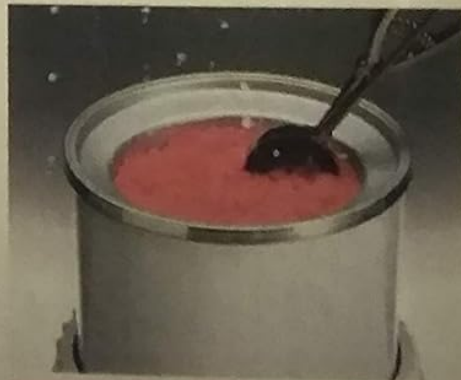
Low-Cal Frozen Yogurt

La Glacière turns yogurt into mouth-watering frozen yogurt cones for a quick, low-cal treat.



Frozen Margaritas and Daiquiris

Now you can enjoy restaurant-quality frozen drinks at home with Krups La Glacière.



Fast, Delicious Results in less than 30 Minutes

The quick freezing bowl and automatic paddle turn fresh ingredients into ice cream, frozen yogurt, sorbets and more in less than 30 minutes.



FOR HOUSEHOLD USE ONLY

Image: Examples of various frozen desserts that can be made, including sorbet, ice cream, frozen yogurt, and frozen cocktails.

MAINTENANCE AND CLEANING

Proper cleaning ensures the longevity and hygiene of your ice cream maker.

1. **Unplug:** Always unplug the appliance before cleaning.
2. **Disassemble:** Remove the lid, mixing paddle, and freezing bowl from the motor base.
3. **Clean Freezing Bowl, Paddle, and Lid:** Wash these parts in warm, soapy water. Rinse thoroughly and dry completely before storing. **Do not wash in a dishwasher.**
4. **Clean Motor Base:** Wipe the motor base with a damp cloth. **Never immerse the motor base in water or any other liquid.**
5. **Storage:** Ensure all parts are completely dry before reassembling or storing. Store the freezing bowl in the freezer if you plan to use it frequently.

Product Care Instructions:

- Hand Wash

TROUBLESHOOTING

Problem	Possible Cause	Solution
Ice cream mixture does not freeze or remains too soft.	Freezing bowl not sufficiently frozen. Mixture not pre-chilled.	Ensure freezing bowl is frozen for at least 12-24 hours. Pre-chill mixture thoroughly in the refrigerator.
Mixing paddle stops or struggles.	Mixture is too thick. Too much mixture added.	Ensure mixture is not excessively thick. Do not overfill the bowl; adhere to the 1-quart capacity.
Appliance does not turn on.	Not plugged in. Power outlet issue.	Check if the appliance is securely plugged into a working outlet.
Ice cream has an icy texture.	Mixture not churned long enough.	Ensure adequate churning time (20-30 minutes) for proper aeration and freezing.

SPECIFICATIONS

Brand: KRUPS

Model Number: 3370-70

Capacity: 1 Quart (4 cups)

Operation Mode: Automatic

Material: Stainless Steel (accents/internal components)

Color: White

Item Weight: Approximately 9.35 pounds

Package Dimensions: Approximately 15.1 x 10 x 9.8 inches

UPC: 010942112204







Power: 120VAC

WARRANTY AND SUPPORT

For warranty information or technical support, please refer to the warranty card included with your product or visit the official KRUPS website. Keep your purchase receipt as proof of purchase.

KRUPS Official Website: <https://www.krups.com>

Related Documents - 3370-70

 <p>KRUPS Gelatissima Art. 358</p>	<p>KRUPS Gelatissima Art. 358 Eismaschine Bedienungsanleitung & Rezepte</p> <p>Umfassende Bedienungsanleitung für die KRUPS Gelatissima Eismaschine, Modell Art. 358. Enthält Sicherheitshinweise, Anleitungen zur Zubereitung von Eiscreme, Reinigungstipps und Rezepte für hausgemachtes Eis und Sorbets.</p>
 <p>KRUPS ESPRESSERIA AUTOMATIC EA9000</p>	<p>Krups EA9000 Espresso Automatic User Manual</p> <p>Comprehensive user manual for the Krups EA9000 Espresso Automatic coffee machine, covering setup, operation, maintenance, and troubleshooting.</p>
 <p>KRUPS Coffee Time Plus 12-cup, model 137 Coffee Time Plus 10-cup, model 136</p>	<p>KRUPS Coffee Time Plus: User Manual, Features, and Warranty</p> <p>Comprehensive guide to the KRUPS Coffee Time Plus coffee maker, covering features, operation, programming, cleaning, and warranty information for models 136 and 137.</p>
 <p>KRUPS SENSATION MILK EA91 RANGE</p>	<p>Krups Sensation Milk EA91 Range Quick Start Guide</p> <p>Concise guide to setting up, using, and maintaining your Krups Sensation Milk EA91 Range automatic coffee machine. Learn how to make coffee and milk-based drinks, clean, and descale the appliance.</p>
 <p>KRUPS ESPRESSERIA AUTOMATIC XP9000</p>	<p>KRUPS ESPRESSERIA AUTOMATIC XP9000: Operating Instructions and User Manual</p> <p>Comprehensive operating instructions, safety guidelines, technical specifications, and maintenance information for the KRUPS ESPRESSERIA AUTOMATIC XP9000 automatic espresso machine.</p>
 <p>KRUPS EVIDENCE HOT & COLD</p>	<p>KRUPS EA898 EVIDENCE HOT & COLD Automatic Coffee Machine User Manual</p> <p>A comprehensive guide for the KRUPS EA898 EVIDENCE HOT & COLD automatic coffee machine, covering setup, operation, beverage customization, maintenance, and cleaning procedures.</p>