

Whirlpool 338906

Whirlpool 338906 Dryer Flame Sensor Instruction Manual

Genuine Replacement Part for Whirlpool Dryers

			Overview	Safety		
Information	Installation	Operation	Maintenance	Troubleshooting	Specifications	Warranty & Support

1. PRODUCT OVERVIEW

This manual provides instructions for the Whirlpool 338906 Dryer Flame Sensor. This component is a genuine replacement part designed to ensure the proper and safe operation of compatible Whirlpool gas dryers. The flame sensor monitors the presence of a flame in the dryer's burner assembly, signaling the control system to continue the heating cycle. If no flame is detected, the sensor will cause the gas valve to shut off, preventing unburned gas from accumulating.



Figure 1: Whirlpool 338906 Dryer Flame Sensor in its original packaging, indicating it is a genuine Whirlpool quality part.

The [338906](#) sensor is crucial for the safety and efficiency of your dryer's heating system. It is compatible with various Whirlpool dryer models, including 1276[^]0A, 1276W0A, 1CWD5100VQ0, 1CWGD5100VQ1, 1CWGD5200VQ0, 1CWGD5200VQ1, 1CWGD5300VW0, 1CWGD5790VQ0, and 1CWGD5790VQ1.

2. IMPORTANT SAFETY INFORMATION

WARNING: Before attempting any repair or installation, always disconnect the dryer from its power source (unplug it or turn off the circuit breaker) and shut off the gas supply. Failure to do so can result in electric shock, gas leak, fire, or serious injury.

- Always wear appropriate personal protective equipment, such as gloves, during installation.
- Ensure the work area is well-ventilated.
- If you are unsure about any step, consult a qualified appliance technician.
- Use only genuine Whirlpool replacement parts to ensure compatibility and safety.
- After installation, check for any gas leaks if working with gas lines.

3. INSTALLATION INSTRUCTIONS

Replacing the flame sensor requires accessing the dryer's internal components. The general steps are outlined below. Specific disassembly procedures may vary by dryer model. Refer to your dryer's service manual for detailed instructions.

Tools Required:

- Phillips-head screwdriver
- 1/4-inch nut driver
- Flat-bladed screwdriver or putty knife (for opening dryer panels)

General Installation Steps:

1. **Disconnect Power and Gas:** Unplug the dryer from the electrical outlet and turn off the gas supply valve.
2. **Access Dryer Interior:** Depending on your model, this may involve removing the top panel, front panel, or rear panel. Typically, the front panel needs to be removed to access the burner assembly.
3. **Locate the Flame Sensor:** The flame sensor is usually located near the igniter and burner tube within the burner assembly. It is a small component with two wires connected to it.

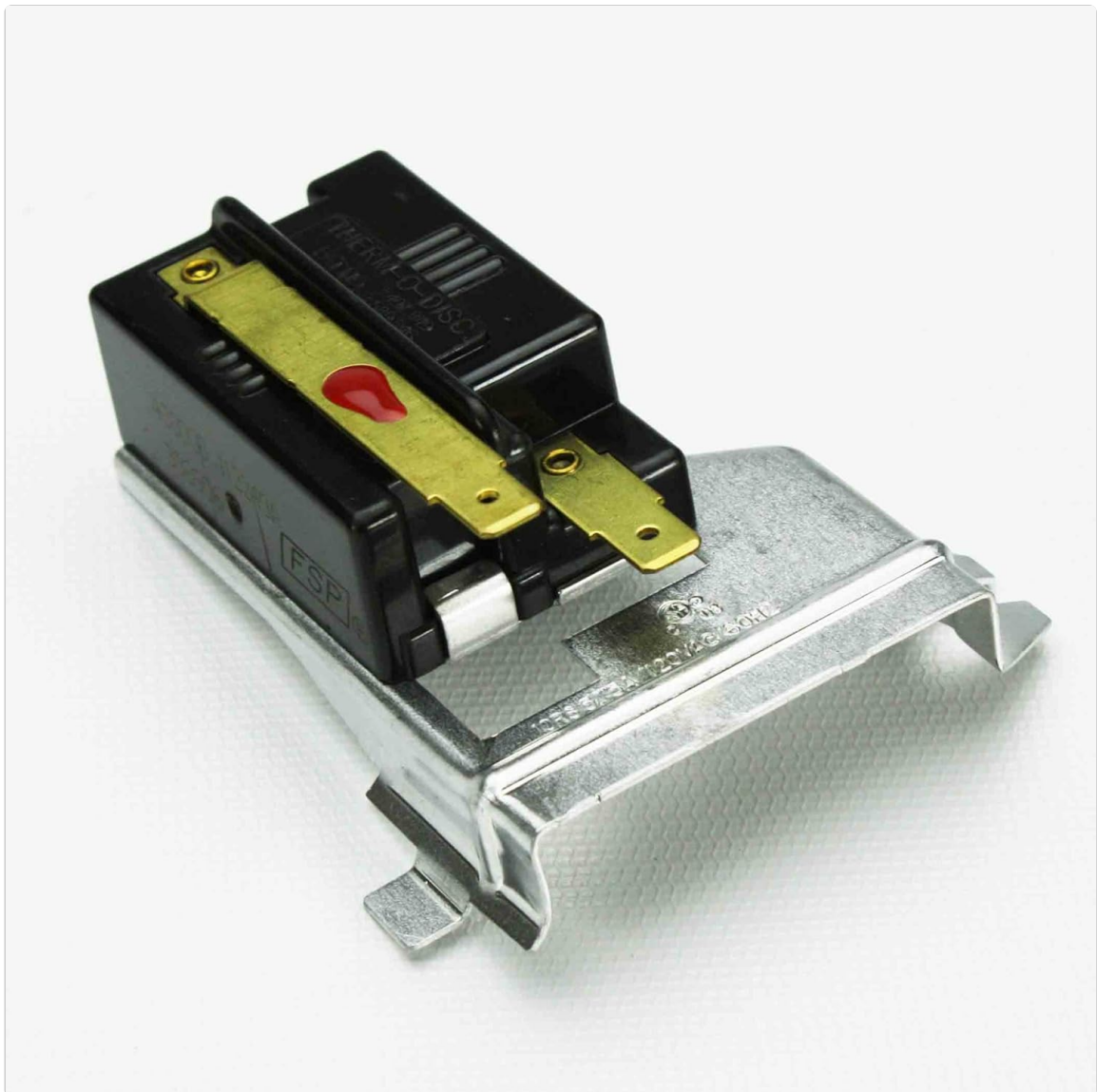


Figure 2: A close-up view of the Whirlpool 338906 Flame Sensor, showing its electrical terminals and mounting bracket.

4. **Disconnect Wires:** Carefully disconnect the two electrical wires from the old flame sensor. Note their orientation if necessary, though they are typically non-polarized.

5. **Remove Old Sensor:** Unscrew the mounting screw(s) that secure the flame sensor to its bracket or the burner assembly. Remove the old sensor.



Figure 3: Another perspective of the Whirlpool 338906 Flame Sensor, highlighting the "THERM-O-DISC" branding and patent numbers.

6. **Install New Sensor:** Position the new Whirlpool 338906 flame sensor in the same location as the old one. Secure it with the mounting screw(s).

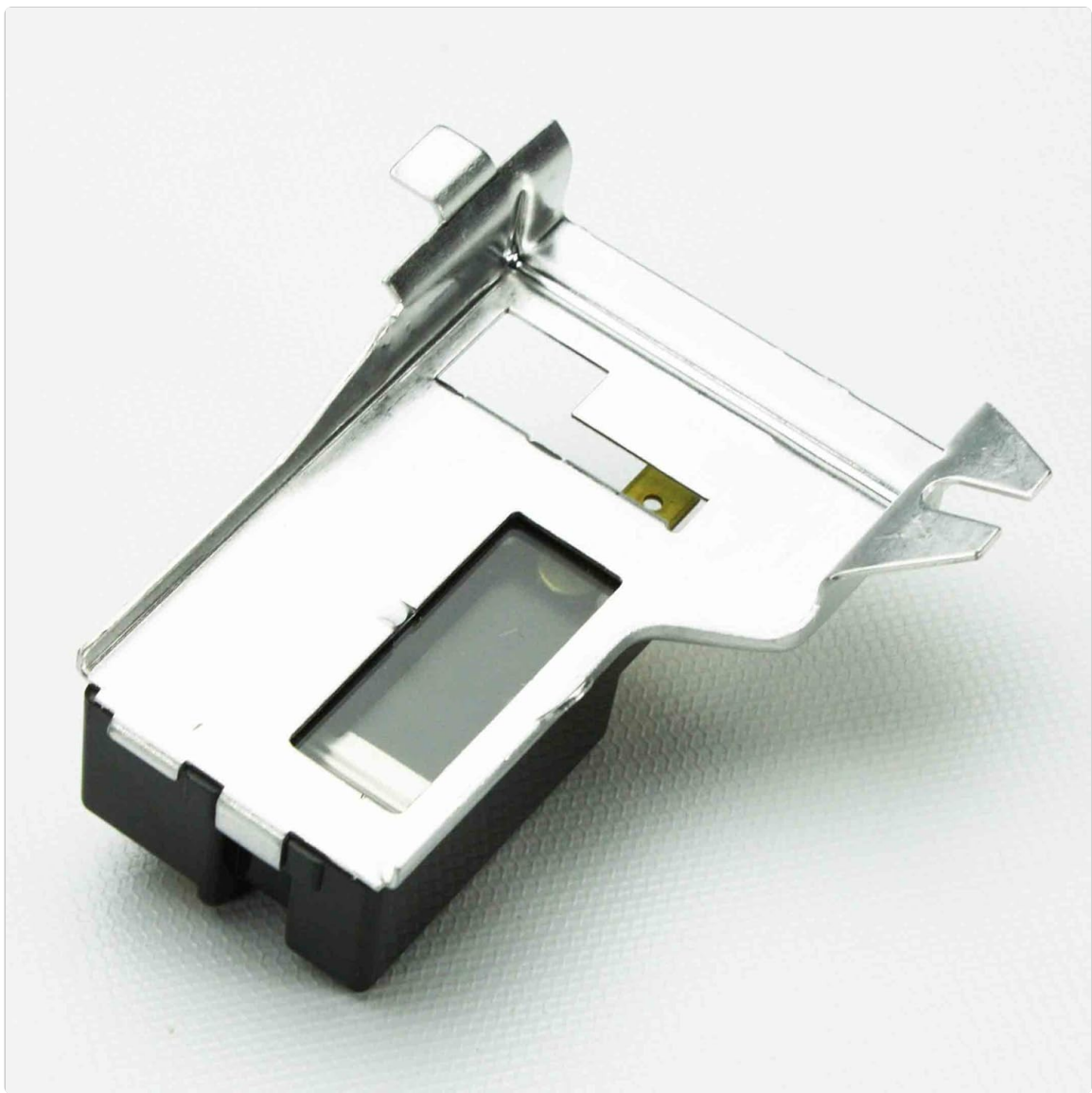


Figure 4: Bottom view of the Whirlpool 338906 Flame Sensor, showing the sensor element and its housing.

7. **Reconnect Wires:** Reconnect the electrical wires to the new sensor.
8. **Reassemble Dryer:** Reattach any panels or components that were removed. Ensure all screws are tightened and panels are securely in place.
9. **Restore Power and Gas:** Turn on the gas supply and plug the dryer back into the electrical outlet.
10. **Test Operation:** Run a short drying cycle to confirm proper heating and operation. Listen for the igniter and burner to cycle correctly.

IMPORTANT: If you detect any gas odor after restoring the gas supply, immediately shut off the gas, open windows for ventilation, and contact a qualified technician or your gas provider. Do not operate the dryer.

4. OPERATION OF THE FLAME SENSOR

The Whirlpool 338906 flame sensor operates as a safety and control device within your gas dryer. When the dryer starts a heating cycle, the igniter glows to ignite the gas. Once a flame is established, the flame sensor detects its presence. This detection signals the dryer's control board that the burner is operating correctly, allowing the gas valve to remain open and the heating cycle to continue.

If the flame sensor does not detect a flame (e.g., due to a faulty igniter, gas supply issue, or a defective sensor itself), it will signal the control board to shut off the gas valve, preventing unburned gas from entering the dryer drum or exhaust system. This mechanism is critical for preventing fire hazards and

ensuring efficient drying.

5. MAINTENANCE

The Whirlpool 338906 flame sensor is a sealed component and does not require routine maintenance or cleaning. However, ensuring the overall cleanliness of your dryer can contribute to the longevity of all its components, including the flame sensor.

- **Clean Lint Filter:** Always clean the lint filter before or after every load to maintain proper airflow and prevent lint buildup, which can affect dryer performance and safety.
- **Inspect Exhaust Vent:** Periodically inspect and clean the dryer's exhaust vent system to ensure it is free of lint and obstructions. A clogged vent can cause the dryer to overheat and potentially damage components.
- **Professional Inspection:** Consider having your dryer professionally inspected every few years to ensure all components, including safety sensors, are functioning correctly.

6. TROUBLESHOOTING COMMON ISSUES

If your dryer is experiencing heating problems after replacing the flame sensor, or if you suspect the sensor is faulty, consider the following:

Symptom	Possible Cause	Action
Dryer runs but does not heat.	Faulty igniter	Check gas supply.
	Defective gas valve coils	Inspect igniter for glow.
	No gas supply	Test gas valve coils for continuity.
	Defective flame sensor (if not recently replaced)	If igniter glows but no flame, the flame sensor or gas valve coils may be faulty.
Dryer heats intermittently or takes too long to dry.	Clogged lint filter or exhaust vent	Clean lint filter and exhaust vent.
	Weak gas valve coils	Test gas valve coils.
	Intermittent flame sensor failure	Ensure proper airflow.
Dryer ignites, but flame quickly goes out.	Defective flame sensor	The flame sensor may not be detecting the flame consistently.
	Weak gas valve coils	Consult a qualified technician to check gas pressure.
	Insufficient gas pressure	

If troubleshooting steps do not resolve the issue, it is recommended to consult a qualified appliance repair technician.

7. PRODUCT SPECIFICATIONS

Attribute	Detail
Part Number	338906

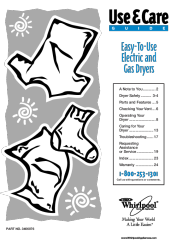
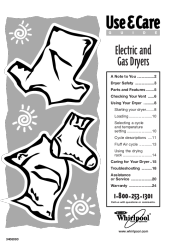


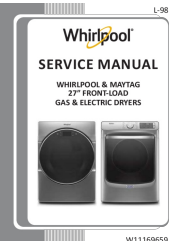

Attribute	Detail
Brand	Whirlpool
Item Weight	1.58 ounces
Product Dimensions	10 x 10 x 10 inches (Packaging dimensions)
Item Package Quantity	1
Compatible Models	Whirlpool 1276^0A, 1276W0A, 1CWD5100VQ0, 1CWGD5100VQ1, 1CWGD5200VQ0, 1CWGD5200VQ1, 1CWGD5300VW0, 1CWGD5790VQ0, 1CWGD5790VQ1

8. WARRANTY AND SUPPORT

As a genuine Whirlpool replacement part, the 338906 flame sensor is typically covered by Whirlpool's standard warranty for replacement parts. Please refer to the warranty documentation included with your purchase or visit the official Whirlpool website for specific warranty terms and conditions. For technical support, service inquiries, or to locate authorized service providers, please visit the official Whirlpool support website or contact their customer service department. Using genuine parts ensures compatibility and maintains the integrity of your appliance's warranty.



Figure 5: Whirlpool Corporation Factory Certified Parts & Accessories banner, emphasizing the importance of genuine parts.

	<p>Whirlpool Easy-To-Use Electric and Gas Dryers Use & Care Guide</p> <p>Comprehensive Use & Care Guide for Whirlpool electric and gas dryers, covering safety, operation, maintenance, troubleshooting, and warranty information. Learn how to use your dryer efficiently and safely.</p>
	<p>Whirlpool Electric and Gas Dryer Use and Care Guide</p> <p>A comprehensive guide for operating, maintaining, and troubleshooting Whirlpool electric and gas dryers. Learn about different cycles, safety precautions, and care instructions for optimal performance.</p>
	<p>Whirlpool Commercial Stacked Dryer Installation Instructions</p> <p>Comprehensive installation guide for Whirlpool Commercial Stacked Dryers (Gas and Electric models), covering safety, electrical requirements, venting, leveling, gas connections, and setup.</p>
	<p>Whirlpool Dryer Use and Care Guide - Models 3LGR5434BN1, 3LGR5434BQ1, 3LGR5434BW1</p> <p>Comprehensive Use and Care Guide for Whirlpool Clothes Dryers, including operating instructions, safety precautions, maintenance tips, troubleshooting, and warranty information for models like 3LGR5434BN1, 3LGR5434BQ1, 3LGR5434BW1. Features part number 3401011.</p>
	<p>Whirlpool & Maytag 27" Front-Load Gas & Electric Dryers Service Manual W11169659</p> <p>This comprehensive service manual, part number W11169659, details diagnostics, troubleshooting, component testing, and repair procedures for Whirlpool and Maytag 27-inch front-load gas and electric dryers, empowering service professionals.</p>
	<p>Whirlpool WFC8090GX Service Manual: Smart All-In-One Washer & Dryer</p> <p>Comprehensive service manual for the Whirlpool WFC8090GX Smart All-In-One Washer & Dryer. Includes diagnostics, troubleshooting, component testing, and repair procedures for service professionals.</p>