

[Manuals.plus](#) /

> [Bosch](#) /

> Bosch 00611332 Genuine OEM Drain Pump for Bosch Dishwashers User Manual

Bosch 00611332

Bosch 00611332 Genuine OEM Drain Pump User Manual

For Bosch Dishwashers

PRODUCT OVERVIEW

The Bosch 00611332 Genuine OEM Drain Pump is a critical component designed for Bosch dishwashers. This high-quality part is engineered to exact specifications to effectively remove water from the dishwasher tub during the draining phase of the wash cycle. It operates on 54-volt power and a 55-Hz frequency.

This drain pump replaces original part number 611332 and ensures proper drainage, preventing water accumulation and potential error codes in your appliance.



Figure 1: Front view of the Bosch 00611332 Genuine OEM Drain Pump. This image shows the main body of the pump with its electrical connections and the impeller housing.

SAFETY INFORMATION

Before attempting any installation or maintenance on your dishwasher, it is imperative to prioritize safety.

- **Disconnect Power:** Always disconnect the appliance from all electrical utilities by unplugging it or turning off the circuit breaker before beginning any work.
- **Disconnect Water Supply:** Turn off the water supply to the dishwasher.
- **Wear Protective Equipment:** It is recommended to use protective safety equipment, such as gloves and eye protection, to prevent injury.
- **Professional Assistance:** If you are unsure about any step of the installation or repair process, consult a qualified appliance technician.

SETUP AND INSTALLATION

Replacing the drain pump requires accessing the underside of the dishwasher. The process typically involves tilting the dishwasher or pulling it out from its cabinet.

1. **Preparation:** Ensure the dishwasher is disconnected from power and water. Clear the area around the dishwasher for access.
2. **Access the Pump:** Depending on your dishwasher model, you may need to remove the front lower access panel or tilt the dishwasher backward to access the drain pump located at the bottom.
3. **Locate Old Pump:** Identify the existing drain pump. It is typically secured with clips or screws and has electrical connections and hoses attached.
4. **Disconnect Hoses and Wiring:** Carefully disconnect the drain hoses and electrical wiring from the old pump. Be prepared for residual water to drain out.
5. **Remove Old Pump:** Unclip or unscrew the old pump from its housing.
6. **Install New Pump:** Position the new Bosch 00611332 drain pump into the housing. Ensure it clicks securely into place or is fastened with screws as per the original installation.
7. **Connect Hoses and Wiring:** Reconnect the drain hoses and electrical wiring to the new pump. Ensure all connections are secure to prevent leaks and ensure proper electrical contact.
8. **Test:** Once installed, carefully return the dishwasher to its upright position and reconnect power and water. Run a short cycle to check for proper drainage and any leaks.

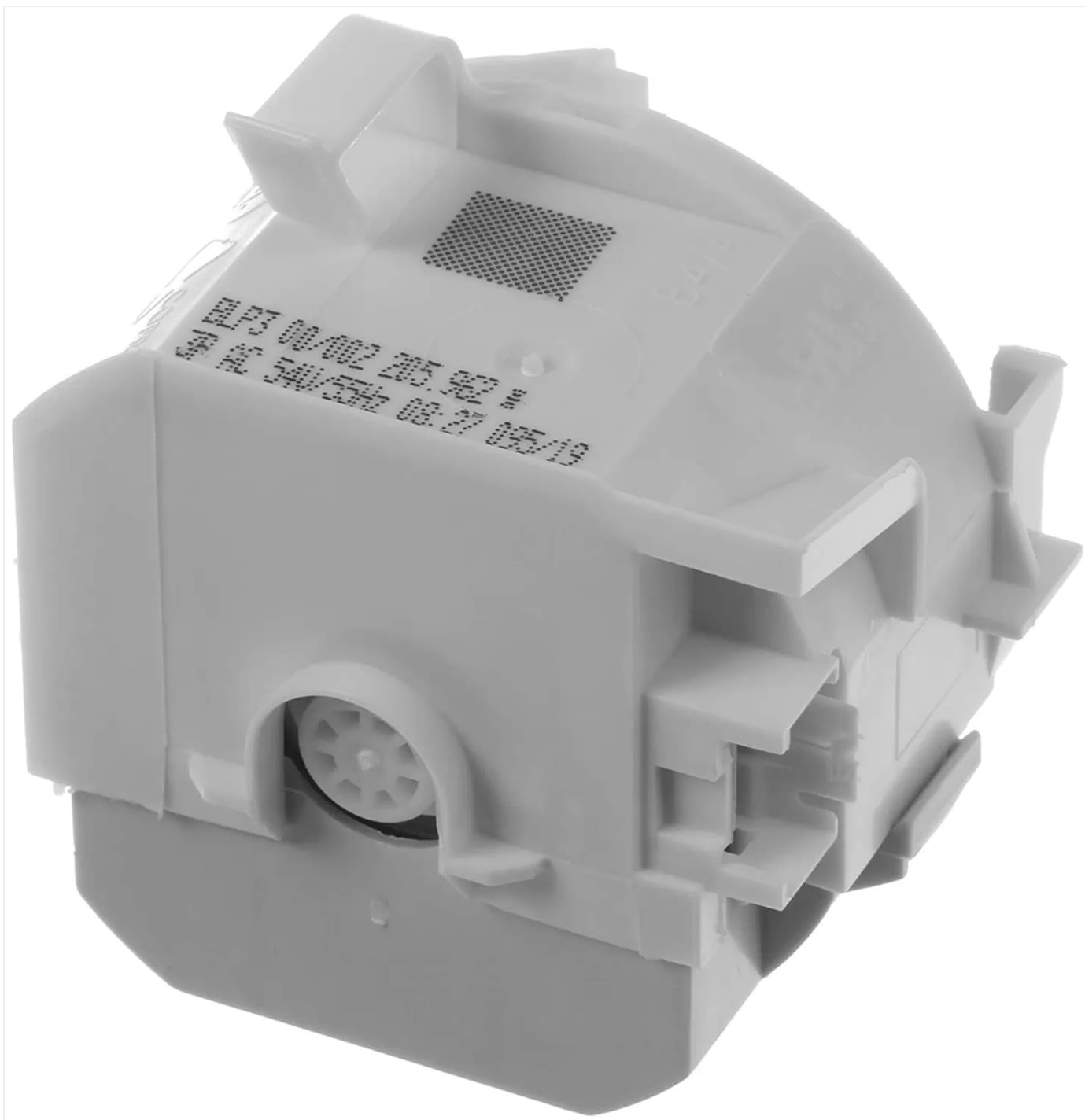


Figure 2: Side view of the drain pump, showing the connection points for hoses and wiring. Proper connection is crucial for leak-free operation.

OPERATING PRINCIPLES

The drain pump is an integral part of your dishwasher's wash cycle. Its operation is fully automated and controlled by the dishwasher's main control board.

- **Drain Cycle Activation:** During the wash cycle, at specific intervals (e.g., pre-wash drain, main wash drain, final rinse drain), the dishwasher's control system activates the drain pump.
- **Water Removal:** The pump's impeller spins rapidly, creating suction that draws water from the dishwasher tub and expels it through the drain hose into your home's drainage system (e.g., garbage disposal or standpipe).
- **Efficient Drainage:** Proper functioning of the drain pump ensures that dirty water is efficiently removed, allowing fresh water to enter for subsequent wash or rinse cycles, and preventing standing water at the end of a cycle.



Figure 3: Top view of the drain pump, highlighting the impeller. The impeller's rotation is responsible for moving water out of the dishwasher.

MAINTENANCE

While the drain pump itself requires minimal maintenance, ensuring the overall drainage system is clear can prolong its lifespan and maintain optimal dishwasher performance.

- **Regular Filter Cleaning:** Regularly clean the dishwasher's filters (coarse and fine) located at the bottom of the tub. Food particles and debris can clog these filters and eventually reach the drain pump, hindering its operation.
- **Check Drain Hose:** Periodically inspect the drain hose for kinks or blockages. Ensure it is properly routed and not crushed behind the dishwasher.
- **Impeller Inspection:** If you suspect a drainage issue, and after disconnecting power, you can carefully inspect the pump's impeller (as shown in Figure 3) for any obstructions like broken glass or food debris. Remove any foreign objects found.

TROUBLESHOOTING

If your dishwasher is experiencing drainage issues, the drain pump may be a contributing factor. Here are common symptoms and potential solutions:

Symptom	Possible Cause	Solution
Water not draining from tub (E-25 error)	Clogged filter, blocked drain hose, faulty drain pump.	Clean dishwasher filters. Check drain hose for kinks or blockages. Inspect drain pump impeller for debris. If issues persist, the pump may need replacement.
Loud noise during drain cycle	Debris in pump impeller, worn pump motor.	Disconnect power and inspect impeller for foreign objects. If no debris, the pump motor may be failing and require replacement.
Dishwasher stops mid-cycle	Drainage issue preventing cycle progression.	Refer to "Water not draining" solutions. Ensure proper drainage is occurring.

Note: Always disconnect power to the dishwasher before performing any inspection or repair.

SPECIFICATIONS

Key technical specifications for the Bosch 00611332 Genuine OEM Drain Pump:

Attribute	Detail
Part Number	00611332
Replaces Part Number	611332
Brand	Bosch
Model Info	611332
Voltage	54 Volts
Frequency	55 Hz
Material	Plastic
Color	Black
Product Dimensions (L x W x H)	3"L x 3"W x 2.75"H
Item Weight	0.1 Kilograms (approx. 3.52 ounces)
Included Components	Drain Pump

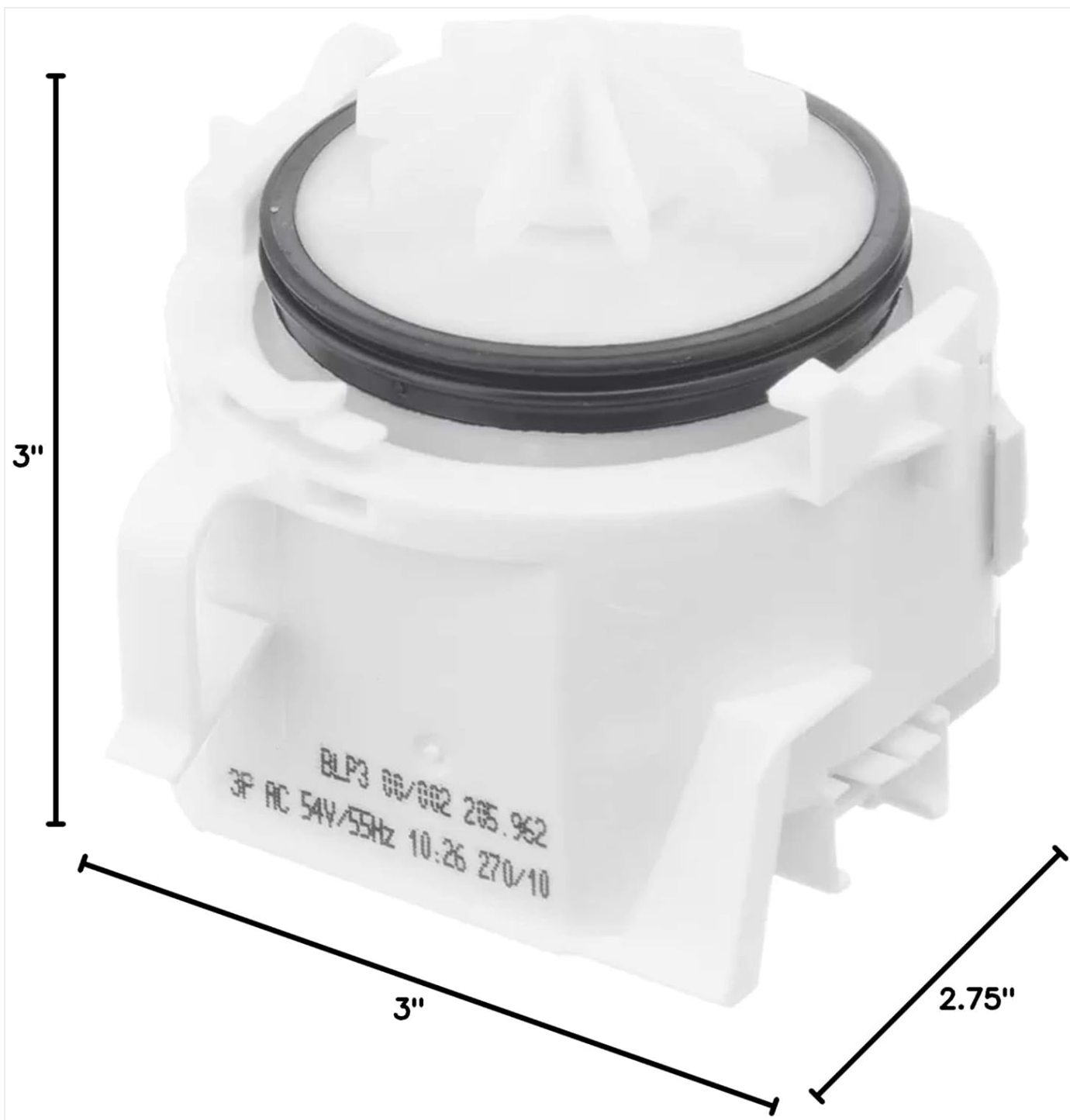


Figure 4: Dimensional view of the Bosch 00611332 Drain Pump, indicating its approximate length, width, and height.

WARRANTY AND SUPPORT

Information regarding the specific warranty period or direct support contact for the Bosch 00611332 Genuine OEM Drain Pump is not provided within this manual. For warranty claims or technical support, please refer to the documentation included with your original appliance purchase or contact Bosch customer service directly.

You may also visit the official Bosch Home Appliances website for further assistance and product information.



