

AmScope MU800

AmScope MU800 8 MP Microscope Camera User Manual

Model: MU800

INTRODUCTION

This manual provides comprehensive instructions for the setup, operation, and maintenance of your AmScope MU800 8 MP Microscope Camera. The MU800 is designed to capture high-resolution still images and stream live video from your microscope directly to your computer. Its versatile software offers advanced features for image processing, measurement, and recording.

PACKAGE CONTENTS

Please verify that all items listed below are included in your package:

- AmScope MU800 8 MP Microscope Camera
- USB 2.0 Cable
- Software Installation CD (for Windows and Mac)
- 23mm to 30mm Mounting Adapter
- 23mm to 30.5mm Mounting Adapter



Image: The AmScope MU800 microscope camera, its USB cable, the software installation CD, and two different sized mounting adapters (23mm to 30mm and 23mm to 30.5mm).



Image: The AmScope MU800 camera and its accessories, including the USB cable, software CD, and mounting adapters, shown within their protective packaging.

SETUP

1. Software Installation

1. For Windows Users (XP/Vista/7/8/10):

- Insert the provided software installation CD into your computer's CD/DVD drive.
- Follow the on-screen prompts to install the AmScope software. This software includes advanced features such as stitching, Extended Depth of Focus (EDF), video recording, and measurement functions.
- Ensure your system meets the minimum requirements for optimal performance.

2. For Mac OS X and Linux Users:

- Insert the provided software installation CD into your computer's CD/DVD drive.
- Follow the on-screen prompts to install the AmScope software. This software allows for still image capture,

video recording, and control over color and exposure settings.

2. Camera Connection to Microscope

The MU800 camera is designed to fit various microscope eyepiece tubes or dedicated trinocular ports. It supports 23mm, 30mm, 30.5mm, and C-mount connections.

- Identify the diameter of your microscope's eyepiece tube or trinocular port.
- If your microscope has a 23mm tube, the camera can be inserted directly.
- If your microscope has a 30mm tube, use the 23mm to 30mm mounting adapter.
- If your microscope has a 30.5mm tube, use the 23mm to 30.5mm mounting adapter.
- For C-mount connections, the camera can be directly threaded onto the C-mount adapter (if your microscope has one).
- Gently insert the camera (with or without adapter) into the microscope's port until it is securely seated.



Image: The AmScope MU800 camera mounted on a stereo microscope, connected via USB to a laptop displaying the live microscope feed.



Image: The AmScope MU800 camera mounted on a compound microscope, connected via USB to a laptop displaying the live microscope feed.

3. Camera Connection to Computer

- Connect one end of the provided USB 2.0 cable to the MU800 camera.
- Connect the other end of the USB 2.0 cable to an available USB port on your computer.
- Your computer should recognize the device. If prompted, allow the driver installation to complete.

OPERATING INSTRUCTIONS

1. Launching the Software

After successful installation, locate the AmScope software icon on your desktop or in your applications folder and double-click to launch it.

2. Live View and Focus

- Once the software opens, select the MU800 camera from the device list (if multiple cameras are detected).

- A live video feed from your microscope should appear on the screen.
- Adjust the microscope's focus knobs to achieve a clear and sharp image on your computer screen.
- **Tip:** You can often set a high-speed, low-resolution preview for easier focusing, while still capturing higher-resolution images or videos.

3. Capturing Still Images

- In the software interface, locate the "Capture" or "Snapshot" button (often represented by a camera icon).
- Click this button to capture a still image of the current view.
- Images are typically saved to a default folder, which can usually be configured within the software settings.

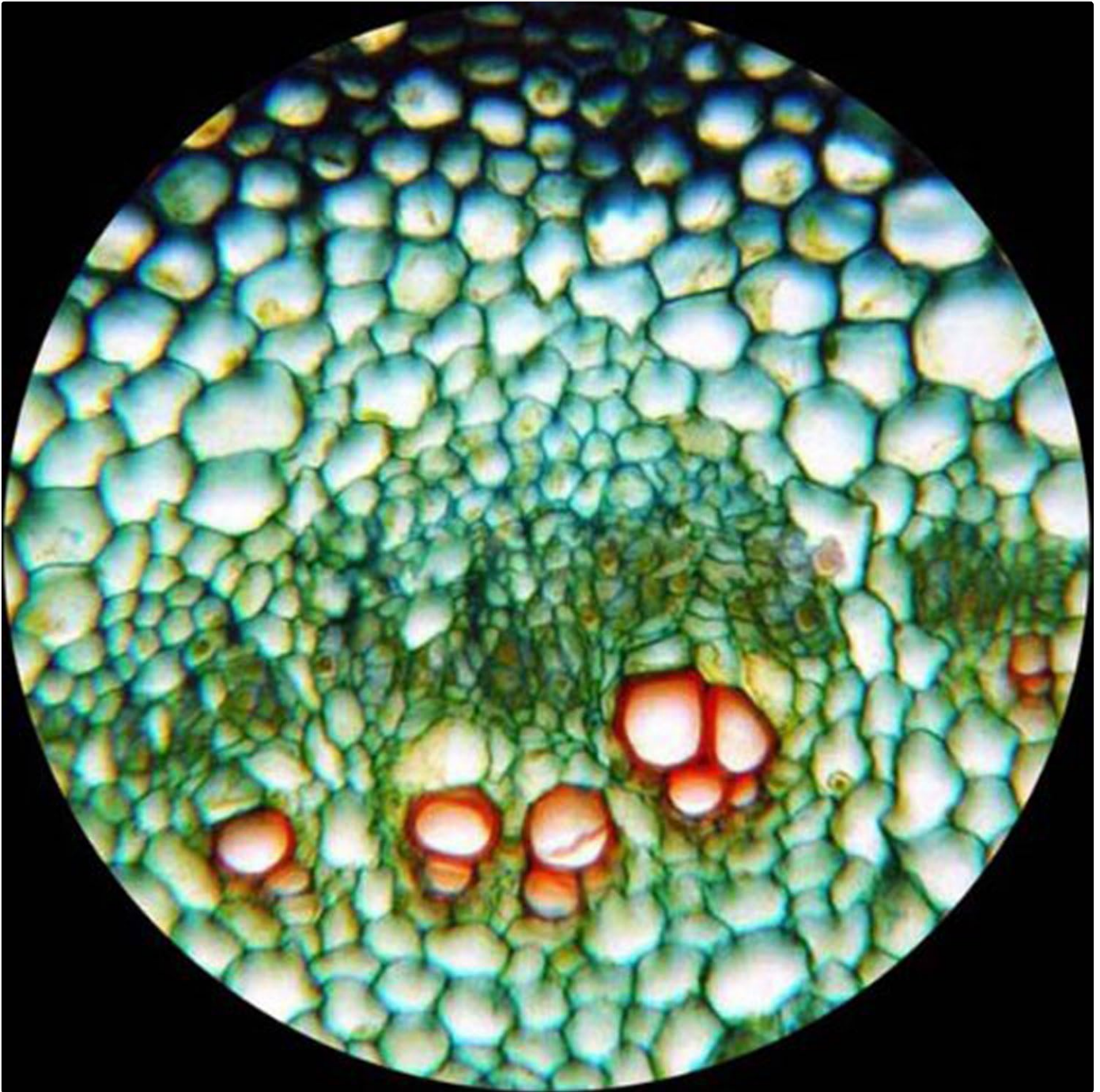


Image: An example of a detailed microscopic image, likely of biological cells or tissue, captured using the AmScope MU800 camera and displayed on a screen.

4. Recording Videos

- Locate the "Record" or "Video" button (often represented by a video camera icon).

- Click to start recording. Click again to stop recording.
- Recorded videos are saved to a designated folder.

5. Advanced Software Features (Windows Only)

The Windows software offers advanced functionalities:

- **Stitching:** Combine multiple images to create a larger, panoramic view.
- **EDF (Extended Depth of Focus):** Merge images taken at different focal planes to create a single image with greater depth of field.
- **Measurement Functions:** Perform precise measurements of objects in your images (e.g., length, area, angle).
- **Annotations:** Add notes, shapes, and watermarks to your images.
- Refer to the software's built-in help documentation for detailed instructions on using these features.

MAINTENANCE

- **Cleaning the Camera Lens:** Use a soft, lint-free cloth specifically designed for optical lenses to gently wipe the camera lens. Avoid using abrasive materials or harsh chemicals.
- **Cleaning the Camera Body:** Wipe the camera body with a soft, dry cloth. If necessary, a slightly damp cloth can be used, but ensure no moisture enters the camera.
- **Storage:** When not in use, store the camera in a clean, dry, and dust-free environment, preferably in its original packaging or a protective case.
- **Software Updates:** Periodically check the AmScope website for software updates to ensure optimal performance and access to the latest features.

TROUBLESHOOTING

Problem	Possible Cause	Solution
No image displayed in software.	Camera not connected; incorrect camera selected; driver issue.	Ensure USB cable is securely connected. Select the MU800 camera in the software. Reinstall drivers if necessary.
Image is blurry or out of focus.	Microscope not focused; camera not seated properly.	Adjust the microscope's coarse and fine focus knobs. Ensure the camera is fully inserted into the microscope port.
Software crashes or freezes.	Software conflict; outdated software/drivers; insufficient system resources.	Close other demanding applications. Update software and drivers from the AmScope website. Restart your computer.
Poor image quality (color, brightness).	Incorrect software settings; insufficient lighting from microscope.	Adjust brightness, contrast, and white balance settings within the software. Ensure adequate illumination from your microscope's light source.

SPECIFICATIONS

Model	MU800
Sensor Resolution	8 Megapixels

Interface	USB 2.0
Compatibility	Windows XP/Vista/7/8/10, Mac OS X, Linux
Mounting Sizes	23mm, 30mm, 30.5mm, C-mount
Material	Polycarbonate
Color	White
Voltage	5 Volts (DC)
Item Weight	0.01 ounces
Package Dimensions	6.69 x 5.98 x 2.44 inches


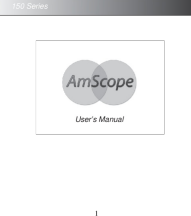
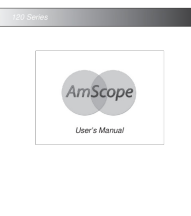
WARRANTY AND SUPPORT




For warranty information, technical support, or service inquiries, please contact AmScope directly. Refer to the contact information provided with your product or visit the official AmScope website.

Manufacturer: United Scope LLC.
AmScope Website: www.amscope.com



Related Documents - MU800

	<p>AmScope DM150-W Full HD Digital Compound Microscope User Manual</p> <p>Comprehensive user manual for the AmScope DM150-W Full HD Digital Compound Microscope, covering setup, operation, safety, and maintenance for optimal use.</p>
	<p>AmScope M150 Series Microscope User Manual</p> <p>User manual for the AmScope M150 Series microscopes, covering setup, operation, maintenance, specifications, and troubleshooting.</p>
	<p>AmScope 120 Series Microscope User Manual</p> <p>Comprehensive user manual for the AmScope 120 Series microscopes, covering setup, operation, specifications, and troubleshooting for models like B120 and T120.</p>

 <p>SM-1 Series</p> <p>AmScope</p> <p>User's Manual</p> <p>1</p>	<p>AmScope SM-1 Series Stereo Microscope User Manual</p> <p>Comprehensive user manual for the AmScope SM-1 Series stereo microscopes, covering setup, operation, specifications, and troubleshooting for models like SM-1B/T, SM-1TS/BS, and SM-1(B/T)-PL.</p>
 <p>PM240 Series</p> <p>AmScope</p> <p>User's Manual</p> <p>1</p>	<p>AmScope PM240 Series Stereo Microscope User Manual</p> <p>User manual for the AmScope PM240 Series stereo microscopes, covering setup, operation, specifications, and troubleshooting for binocular and trinocular models.</p>
 <p>120 Series</p> <p>AmScope</p> <p>User's Manual</p> <p>1</p>	<p>AmScope 120 Series Microscope User Manual</p> <p>Comprehensive user manual for the AmScope 120 Series microscopes (B120 and T120), covering setup, operation, specifications, and troubleshooting.</p>