

Varta 16664101111

Varta Easy Line XS Camping Lantern User Manual

Model: 16664101111

1. PRODUCT OVERVIEW

The Varta Easy Line XS Camping Lantern is a compact and versatile lighting solution designed for various situations, including camping, outdoor activities, or as an emergency light. It features 8x5 millimeter LEDs for efficient light output and offers two distinct light modes.

Key features include:

- Compact and space-saving design.
- 8x5 millimeter LEDs for effective area illumination.
- Highly efficient energy consumption.
- Two light modes: 100% brightness and energy-saving mode.
- Integrated metal handle for carrying or hanging, includes a metal carabiner.



Figure 1: Varta Easy Line XS Camping Lantern, showing its compact design and packaging.

2. SAFETY INFORMATION

Please read and understand all safety instructions before using the Varta Easy Line XS Camping Lantern. Retain this manual for future reference.

- **Battery Safety:** Use only the specified battery type (4x AA). Do not mix old and new batteries, or different types of batteries. Ensure correct polarity when inserting batteries. Remove batteries if the lantern will not be used for an extended period to prevent leakage.
- **Disposal:** Dispose of batteries and the product responsibly according to local regulations. Do not dispose of batteries in fire.
- **Usage Environment:** This lantern is designed for general outdoor and indoor use. Avoid exposing it to extreme temperatures, direct sunlight for prolonged periods, or corrosive liquids.
- **Eye Protection:** Do not stare directly into the LED light source, as it may cause temporary vision impairment.
- **Children:** Keep out of reach of small children.

3. SETUP: BATTERY INSTALLATION

The Varta Easy Line XS Camping Lantern requires 4 AA batteries (not included) for operation.

- 1. Unscrew the Base:** Gently twist the bottom section of the lantern counter-clockwise to detach it from the main body.
- 2. Insert Batteries:** Insert four (4) AA batteries into the battery compartment. Pay close attention to the polarity markings (+ and -) molded into the black plastic of the battery compartment. **Note:** Some internal labels may be incorrect; always follow the markings on the plastic housing for proper battery orientation.
- 3. Secure the Base:** Once batteries are correctly inserted, align the bottom section with the main body and twist clockwise until it is securely fastened. Do not overtighten.

The lantern is now ready for use.

4. OPERATING INSTRUCTIONS

The Varta Easy Line XS Camping Lantern features a single button for controlling power and light modes.

- Power On (100% Brightness):** Press the power button once to turn on the lantern at full brightness.
- Energy-Saving Mode:** While the lantern is on at 100% brightness, press the power button a second time to switch to the energy-saving mode. This mode provides reduced brightness to extend battery life.
- Power Off:** Press the power button a third time to turn off the lantern.
- Hanging Function:** Utilize the integrated metal handle or the included metal carabiner to hang the lantern from a tent, branch, or other suitable fixture for overhead illumination.

5. MAINTENANCE

Proper maintenance ensures the longevity and optimal performance of your lantern.

- Cleaning:** Wipe the exterior of the lantern with a soft, damp cloth. Do not use abrasive cleaners or solvents, as these may damage the finish. Ensure the lantern is dry before storage or next use.
- Battery Replacement:** Replace all four AA batteries simultaneously when the light output diminishes significantly. Always use fresh batteries of the same type.
- Storage:** When not in use for extended periods, remove the batteries to prevent potential leakage and store the lantern in a cool, dry place away from direct sunlight.

6. TROUBLESHOOTING

Problem	Possible Cause	Solution
Lantern does not turn on.	Batteries are depleted.	Replace all four AA batteries with new ones.
	Batteries are inserted incorrectly.	Check battery polarity and reinsert correctly according to the plastic markings.
	Loose battery connection.	Ensure the battery compartment base is securely tightened.
Light output is dim.	Batteries are low.	Replace all four AA batteries with new ones.
	Lantern is in energy-saving mode.	Press the power button to switch to 100% brightness mode.

7. SPECIFICATIONS

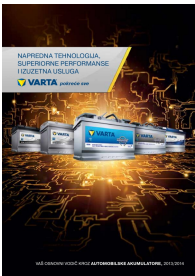


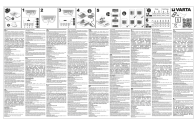
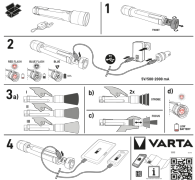
Model Number	16664101111
Light Source	8x5 mm Light Emitting Diode (LED)
Power Source	4 x AA batteries (not included)
Battery Life	Up to 15 hours (depending on mode and battery quality)
Dimensions (LxWxH)	Approximately 18 x 8 x 0.2 Centimeters
Weight (without batteries)	Approximately 0.01 Kilograms (10 grams)

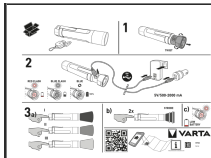
8. WARRANTY AND SUPPORT

The Varta Easy Line XS Camping Lantern comes with a **3-year warranty** from the date of purchase. This warranty covers manufacturing defects under normal use.

For warranty claims, technical support, or further inquiries, please contact Varta customer service through their official website or the retailer where the product was purchased. Please have your proof of purchase and the product model number (16664101111) available when contacting support.

Related Documents - 16664101111

	<p>VARTA Automobilski Akumulatori: Vodič i Katalog</p> <p>Otkrijte naprednu tehnologiju, superiorne performanse i širok asortiman VARTA automobilskih akumulatora. Ovaj katalog pruža detaljne informacije o proizvodima, tehnologiji i primeni, pomažući vam da pronađete savršeni akumulator za vaše vozilo.</p>
	<p>VARTA Work Flex® BL30R Rechargeable LED Work Light User Manual</p> <p>Comprehensive guide to the VARTA Work Flex® BL30R rechargeable LED work light, covering charging, operation, features, and safety information. Includes model 18684 details.</p>
	<p>VARTA Plug Charger User Manual and Safety Information</p> <p>This document provides instructions and safety precautions for the VARTA Plug Charger, a device designed for charging AA and AAA Ni-MH rechargeable batteries. It includes details on usage, charging times, error indicators, and environmental protection guidelines.</p>
	<p>VARTA LCD Ultra Fast Charger+ User Manual</p> <p>User manual for the VARTA LCD Ultra Fast Charger+ (Model 57685), providing instructions on charging modes (Charge, Refresh, Quick Charge), safety precautions, usage, and environmental guidelines for Ni-MH rechargeable batteries.</p>
	<p>VARTA Night Cutter F30R Flashlight User Guide</p> <p>Instructions for using the VARTA Night Cutter F30R flashlight, including charging, mode selection, focus adjustment, and power bank functionality.</p>



[VARTA Night Cutter F20R Flashlight User Guide](#)

Instructions for operating and charging the VARTA Night Cutter F20R flashlight, including different light modes and battery status indicators.