

Rode VIDEOMIC PRO

RODE Videomic Pro User Manual

Model: VIDEOMIC PRO

INTRODUCTION

This manual provides comprehensive instructions for the setup, operation, maintenance, and troubleshooting of your RODE Videomic Pro on-camera microphone. Please read this manual thoroughly before using the product to ensure optimal performance and longevity.

The RODE Videomic Pro is a compact, lightweight shotgun microphone designed for use with camcorders, DSLR cameras, and portable audio recorders. Its integrated Rycote Lyre shock mounting system isolates the microphone capsule from external vibrations, providing clear audio capture.

PACKAGE CONTENTS

Upon opening the package, please verify that all components are present:

- RODE Videomic Pro Microphone
- Foam Windshield
- Integrated Rycote Lyre Shock Mount
- 3.5mm Stereo Mini-Jack Output Cable (attached)
- Furry Wind Cover (Dead Cat)

SETUP

Follow these steps to set up your RODE Videomic Pro:

1. **Install Battery:** The Videomic Pro requires a 9V battery (not included). Open the battery compartment located on the underside of the microphone body and insert the battery, observing the correct polarity.
2. **Mounting:**
The microphone features an integrated cold shoe mount. Slide the mount into your camera's hot shoe or a compatible cold shoe adapter. Tighten the locking wheel securely to prevent accidental detachment.



Image: The RØDE Videomic Pro, a black shotgun microphone with a foam windshield, shown with an optional furry wind cover (dead cat) and its integrated shock mount. The RØDE logo is visible on the foam windshield.

3. **Connect to Camera:** Plug the attached 3.5mm stereo mini-jack cable into your camera's microphone input port. Ensure the connection is firm.
4. **Attach Windshield:** Place the foam windshield over the microphone capsule. For outdoor use or windy conditions, the included furry wind cover (dead cat) can be used over the foam windshield for superior wind noise reduction.

OPERATING INSTRUCTIONS

Understanding the controls and settings will help you achieve the best audio quality.

Powering On/Off

Locate the power switch on the rear of the microphone. Slide it to the 'ON' position to power on the microphone. Slide it to 'OFF' when not in use to conserve battery life.

Level Control (dB)

The Videomic Pro features a three-position level control switch on the rear:

- **0 dB:** Standard gain setting, suitable for most recording situations.
- **+20 dB:** Boosts the output level by 20dB. Useful for cameras with noisy preamps or when recording quiet sources.
- **-10 dB:** Attenuates the output level by 10dB. Ideal for recording loud sound sources to prevent distortion.

High-Pass Filter (HPF)

A three-position high-pass filter switch is also located on the rear of the microphone:

- **Flat:** No filter applied. Captures the full frequency range.
- **75Hz:** Engages a 75Hz high-pass filter. This helps to reduce low-frequency noise such as air conditioner hum or traffic rumble.
- **150Hz:** Engages a 150Hz high-pass filter. This provides a stronger cut-off for more aggressive low-frequency noise reduction, useful in very noisy environments.

Important Note:

Always monitor your audio using headphones connected to your camera's headphone output (if available) to ensure proper levels and prevent clipping. Adjust the microphone's level control and your camera's audio input levels accordingly.

MAINTENANCE

Proper care will extend the life of your RODE Videomic Pro:

- **Cleaning:** Use a soft, dry cloth to clean the microphone body. Do not use liquid cleaners or solvents.
- **Windshield Care:** The foam windshield can be gently hand-washed with mild soap and water if it becomes dirty. Allow it to air dry completely before reattaching.
- **Battery Replacement:** Replace the 9V battery when the low battery indicator light (if present) illuminates, or if you notice a decrease in audio quality. Always remove the battery if the microphone will not be used for an extended period to prevent leakage.
- **Storage:** Store the microphone in a cool, dry place, away from direct sunlight and extreme temperatures.
- **Shock Mount:** The Rycote Lyre shock mount is durable, but avoid excessive force or bending to prevent damage.

TROUBLESHOOTING

If you encounter issues with your Videomic Pro, refer to the following common problems and solutions:

Problem	Possible Cause	Solution
No audio or very low audio level.	<ul style="list-style-type: none">• Microphone not powered on.• Dead or low battery.• Cable not fully connected.• Camera audio input level too low.• Microphone level control set incorrectly.	<ul style="list-style-type: none">• Ensure power switch is ON.• Replace 9V battery.• Check 3.5mm cable connection at both microphone and camera.• Increase camera's audio input gain.• Adjust microphone's level control (0dB or +20dB).
Distorted or clipped audio.	<ul style="list-style-type: none">• Microphone level control too high for source.• Camera audio input level too high.• Recording very loud sounds.	<ul style="list-style-type: none">• Set microphone level control to -10dB.• Decrease camera's audio input gain.• Move microphone further from the sound source.
Excessive wind noise or low-frequency rumble.	<ul style="list-style-type: none">• No windshield or inadequate wind protection.• Environmental low-frequency noise.	<ul style="list-style-type: none">• Ensure foam windshield is attached.• Use the included furry wind cover (dead cat).• Engage the 75Hz or 150Hz High-Pass Filter (HPF).
Vibrations or handling noise in audio.	<ul style="list-style-type: none">• Microphone not securely mounted.• Excessive camera movement.	<ul style="list-style-type: none">• Ensure cold shoe locking wheel is tight.• Minimize camera handling noise during recording.

SPECIFICATIONS

Feature	Detail
Microphone Form Factor	Shotgun
Polar Pattern	Super Cardioid
Frequency Range	20Hz - 20kHz (selected HPF @75Hz/150Hz)
Signal-to-Noise Ratio	70 dB
Noise Level	14 dB
Audio Sensitivity	12 dB
Impedance	200 Ohm
Connector Type	3.5 mm Jack
Power Source	Battery Powered (9V battery)
Compatible Devices	Camera
Item Weight	4.3 ounces (122 Grams)
Product Dimensions (L x W x H)	1.69 x 5.91 x 3.74 inches
Included Components	Microphone, Foam Windshield, Integrated Rycote Lyre Shock Mount, 3.5mm Cable, Furry Wind Cover

Note: Specifications are subject to change without notice.

WARRANTY AND SUPPORT

RODE Microphones offers a comprehensive warranty for its products. For detailed warranty information, product registration, and technical support, please visit the official RODE website or contact their customer service directly.

Online Resources:

- Official RODE Website: www.ode.com
- Product Support: Refer to the support section on the RODE website for FAQs, firmware updates, and service requests.

Please retain your proof of purchase for warranty claims.

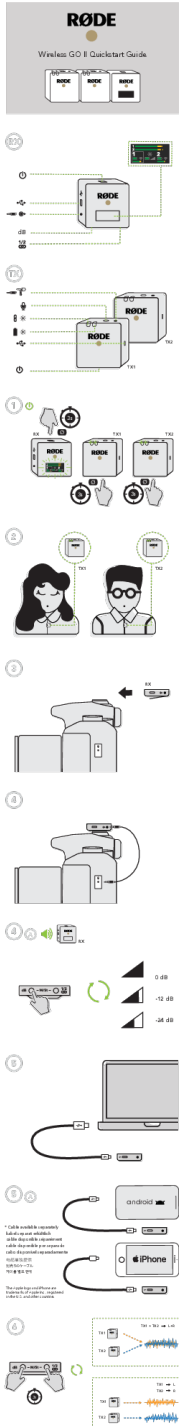
© 2023 Rode Microphones. All rights reserved.

This manual is for informational purposes only. Rode Microphones is not responsible for any errors or omissions.





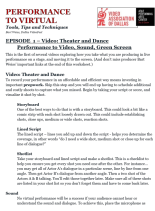
[RODE NTH-100 Professional Over-Ear Headphones User Manual](#)

Discover the RODE NTH-100 professional over-ear headphones, engineered for exceptional audio performance, superior comfort, and durability for content creators. Learn about key features, design, and specifications.



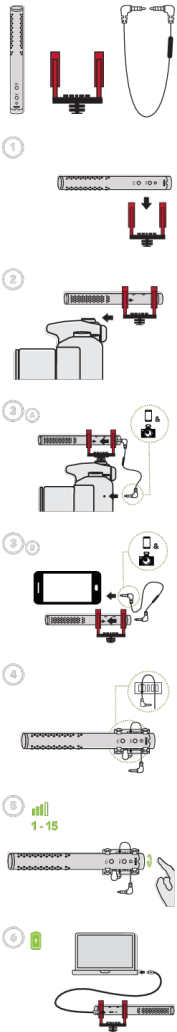
[Rode Wireless GO II Quickstart Guide](#)

A quickstart guide for the Rode Wireless GO II, covering setup, operation, and safety information.

	<p>RØDECaster Video: All-in-One Production Console for Video and Audio</p> <p>Discover the RØDECaster Video, a revolutionary all-in-one console for seamless video and audio production, live streaming, and podcasting. Featuring advanced switching, professional audio mixing, and powerful processing.</p>
	<p>RØDE Stereo VideoMic Pro Instruction Manual - Setup, Features, and Specifications</p> <p>Comprehensive guide to the RØDE Stereo VideoMic Pro on-camera microphone, covering setup, controls, features, specifications, troubleshooting, and care instructions. Learn how to achieve broadcast-quality audio for your videos.</p>
	<p>Performance to Virtual: Video Production Guide for Theater and Dance</p> <p>Learn essential tools, tips, and techniques for converting live theater and dance performances to video, covering sound, green screen, storyboarding, and essential equipment from the Video Association of Dallas.</p>

RØDE

VideoMic[®] NTG Quickstart Guide



[RØDE VideoMic NTG Quickstart Guide: Setup and Usage](#)

A concise guide to setting up and using the RØDE VideoMic NTG on-camera shotgun microphone, covering connections, controls, and accessories for professional audio recording.